



The CSPRA

Wave

Volume 25, Number 2

Newsletter of the CALIFORNIA STATE PARK RANGERS ASSOCIATION

Spring 2025

"State Park experts and professionals advocating for State Parks since 1964."

2025 Rendezvous at Columbia SHP

We are pleased to announce the annual CSPRA Rendezvous is scheduled for Monday Sept 15 through Thursday Sept 18. Mark your calendars now! We will gather at Columbia SHP with likely tours to Railtown and Calaveras Big Trees SP.

Registration details and schedule will appear in our next newsletter. Not only is the Rendezvous very reasonably priced, there are CSPRA scholarships and grants available. So don't let cost keep you away.



The California Gold Rush drew prospectors to Columbia from around the world. Columbia was once known as the "Gem of the Southern Mines," and by 1853, was one of the largest cities in California. Unlike

many other Gold Rush settlements that disappeared due to fire, vandalism and time, Columbia survived.

Discover the shops and merchants that bring Columbia to life and take the opportunity to learn more about concessions in State Parks. Currently, the park has about 20 active concession contracts. Columbia demonstrates the complexity and interaction of local community, private business, concessions, county, and State Parks.





CSPRA LEADERSHIP

PRESIDENT

Steve Ptomey, Interpreter III,
steve@cspira.com

VICE PRESIDENT

Ann Meneguzzi, Retired, Sup. Rgr.
ann@cspira.com

SECRETARY

Joanne Kerbavaz, Environmental
Scientist, joanne@cspira.com

TREASURER

Ron Krueper, Retired Ranger/Supt.
ron@cspira.com

DIRECTORS

Sal Goshorn, Ret Lifeguard
sal@cspira.com

Jean Rhyne, Interpreter,
jean@cspira.com

Greg Kania, Park Maintenance Chief,
greg@cspira.com

Rich Rozzelle, Superintendent, Ret
rich@cspira.com

Riley Budd, Ranger SPPO
riley@cspira.com

Jeremy Lin, Interpreter III
jeremy@cspira.com

Dan Kraft, Ranger SPPO
dan@cspira.com

PAST PRESIDENT

Dave Carle, Retired Ranger
dave@cspira.com

MEMBER SERVICES

Betsy Anderson
betsy@cspira.com

INTERNET COMMUNICATIONS

Jeffery B. Price, Webmaster
jeff@cspira.com
www.cspira.com

The CSPRA Wave

ISSN 0087-9176
Brian Cahill, Editor
Brian@cspira.com

Published by CSPRA, PO Box 1667
Big Bear Lake CA 92315

**Deadline for next issue
June 15**

President's Message

My fellow members and colleagues, I would like to start off by saying a big thank you to all our members that contributed to the relief fund for the Southern California wildfires. Working with the Ranger Foundation and the State Parks Foundation we raised and distributed over \$30,000.00 to our park colleagues in need. This was due in large part of the donations from the ranks of the "Grey Bears" and a generous grant from the Parks Foundation. It was amazing to watch how the "parks family" of retired and active members rallied and accomplished this within two weeks. For our small organization it is amazing! I want to thank each member that donated, spread the word and worked hard to make this happen. Special thanks to the Ranger Foundation treasurer Tom Bernardo who handled the actual distribution and Randy Widera from the Parks Foundation for coordinating efforts and the donation from the Parks Foundation.

I would like to take a moment to remind us all of one of our priorities for this year: **membership**. We as an organization need to grow and expand our ranks. To be a healthy and relevant organization we need every member to focus on recruiting at least one other person this year. I would like to challenge our members still active in the department to share with



your co-workers some of the great things CSPRA has accomplished and why you joined. For our retired members, if you know a fellow Gray Bear who isn't a member, reach out to them and let them know we are still here and need them to join. With numbers comes strength; there are a lot of challenges ahead for us as an organization and for the department in the coming year. As the department's "conscience", we need you to help us make our voice louder.

With shrinking budgets and a projected deficit for the next fiscal year it is all too easy to bend to political winds and cut parks budgets, staffing or make compromises that in the end will harm our parks. Together we can say with one loud voice that parks are important and worth saving. Remember that the core mission of CSPRA is to: Support, Protect, and defend the integrity of State Parks, Advance the highest principles of public service, serve as the conscience for the department, Maintain the integrity of natural, historical and cultural heritage. I hope all of us can work together to make CSPRA stronger so we can help State Parks be the best it can be.

Thank you for your support and all your efforts in making CSPRA the voice of the park professional.

Steve Ptomey

Ranger Foundation Fire Support

The recent LA Palisades Wildfire devastated Will Rogers SHP and Topanga Canyon SP destroying more than thirty structures. Eight state park employees lost their state residences or personal residences. Another ten state park employees were displaced by mandatory evacuations for several days.

The Ranger Foundation collected over \$20,000 in donations in two weeks, mostly from retired and active state park employees. Then the California State Parks Foundation generously partnered with the Ranger Foundation to provide up to \$19,000 in matching grants. Those employees with home losses each received \$3,000 in immediate assistance and the evacuated employees provided receipts to receive up to \$2,000 each.

The final accounting showed a total of \$42,427.39 in



assistance provided to eighteen employees. Those helped included administrative, maintenance, interpretation, rangers, park aides, and laborer classifications.

Wildfires in Paradise, Sonoma/Napa County, Big Basin, Grover Hot Springs, Hungry Valley and now LA

active and retired state park employees since 2018.

Ranger Foundation assistance totaling over \$118,000 has been distributed. The Ranger Foundation is eternally grateful for the generosity received during this and previous state wildfire disasters. The heartfelt gratitude expressed by the recipients is always wonderful to hear as it is so very genuine. Tears of joy are frequently shed.



Tom Bernardo
Treasurer
Ranger Foundation
(A 501c3 tax deductible
public charity)

Photos by Brian Baer © California State Parks

Bidwell Mansion in Vintage Postcards

By Mike Lynch

Sadly, on December 11, 2024 the Bidwell Mansion was destroyed by an arson caused fire. The perpetrator was arrested, convicted and sentenced to 11 years in state prison.

I thought it would be nice to look back at the Mansion in vintage postcards from my collection of over 12,000 state park postcards. 700 cards from this collection are featured in my 176-page full-color book California State Parks in Vintage Postcards (available at cspac150@gmail.com).

Here is quick summary of the main Mansion historical dates:

1864-1868 - Mansion constructed.

1918 - Annie Bidwell donates the Mansion to the Presbyterian Church to be used as a school, but the church was unable to fund the school.

1923 - The State Normal School (Now Chico State University) bought the mansion.

1925-1935 - the Mansion was used as a dormitory for female students.

1936-1964 - the Mansion was used for various purposes by Chico State including for classrooms and office space.

1964 - State Parks acquires the Mansion.

December 11, 2024 - The Mansion burns down.

And, here are a selection of Bidwell Mansion postcards.



This is the earliest known Bidwell Mansion postcard in my collection, postmarked in 1908. This era cards were colorized from black and white photos and the colors were not always accurate.



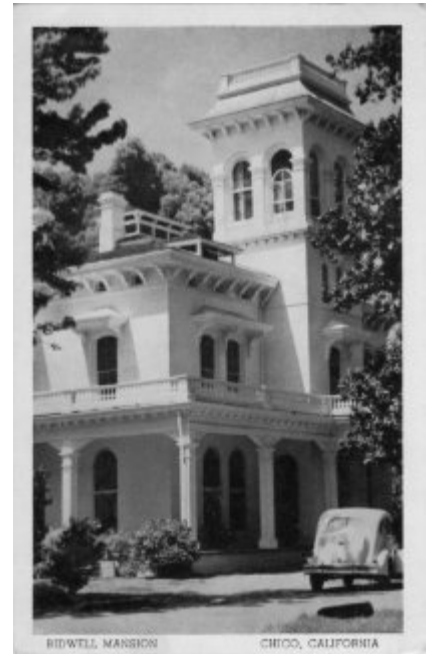
The original caption on this card reads: Bidwell Mansion State Historic Park. Home of General John and Annie E, K, Bidwell, constructed 1864-1868. The Mansion office - a room with an original fireplace, bird display and desk where General Bidwell managed his 25,000 acre farm.



In this card, postmarked in 1971, the trim on the mansion is green. Other cards show white trim and the more modern cards a dark purple trim.



The original caption on this card reads: Bidwell Mansion State Historic Park - Chico, Calif. A 26-room Victorian mansion built between 1865 and 1868 for \$50,000 as a wedding gift for Mrs. Bidwell. This library was a favorite room of the Bidwells. It contains the original bookcases with at least 90% of the Bidwell books.



The original caption on this 1958 postmarked card reads: Bidwell Mansion, palatial home of General and Mrs. John Bidwell., pioneers and founders of Chico and once owners of the huge Rancho Chico, a Mexican grant. The mansion is now owned by the State of California and used in connection with Chico State College. Completed in 1868, much of the woodwork was shipped to California in sailing vessels around Cape Horn.



Taken in 1936, this real photo card shows the Mansion when it was used by Chico State College as office space and classrooms. The mansion was later dubbed "Bidwell Hall" and housed the art and home economics departments.

International Patch Swapping

By Rick Parmer

This is the first installment of a patch swapping tale of three national parks I visited in Argentina and Chile. Mike Lynch implored me to do some patch exchanges in part because the 2027 International Ranger Congress will be held at Iguazu Falls National Park near the tropical Brazilian border. Mike sent me a packet of embroidered contemporary CA State Park uniform patches to exchange when he heard I had a three week trip planned to Argentina. Being retired I hate to have a job assignment on my world

travels but I relented for my inveterate patch collecting colleagues, Mike Lynch and Mike Whitehead.

My wife, Janet and I flew from Buenos Aires to Calafate to visit two attractions in Las Glacieres National Park. Our base camp trekking town was El Chalten which reminded me of Silverton Colorado filled with 20/30 something climbers and trekkers. It was a 3 hour drive from Calafate across the vast grassy steppe populated with native Guanacos, (related to llamas and alpacas) The park is the largest national park in

Argentina at 2800 square miles and is a UNESCO World Heritage site. By comparison, Anza-Borrego State Park is only 935 square miles. Habitat ranges from grassy steppe to Magellanic beech forest up to the mountain alpine zones of Fitz Roy (11,171) and Cerro Torre (10,262) granite spires. These attract top climbers from all over the world. The aqua-marine lake intruding into the park is Lago Argentina, just 97 (you got that right) miles long and 566 square miles. Everything here is big. Even the Magellanic woodpeckers here are up to 18 inches high with a 26 inch wing

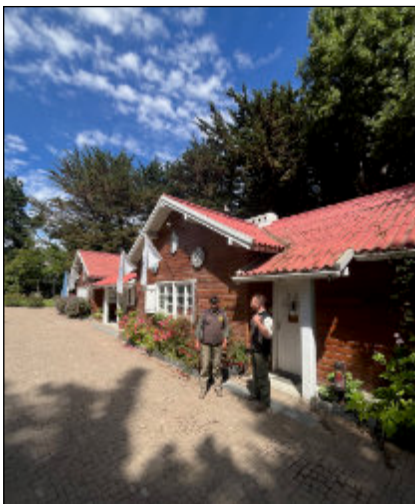


span. And of course the Andean Condor with a 12 foot wing span is the largest bird in the world.

There are 40 national parks with about 200 rangers in total. Only one harried but pleasant ranger was in the visitor center at El Chalten with a long line of visitors lined up to ask questions. He had no time to talk patches and referred me to headquarters in El Calafate a town of 23,000. Rangers are as hard to find as the plentiful sandy toned pumas that feast on the succulent light brown and white Guanacos. The endangered Huemul (south Andean deer) is also a rarely seen resident of the park and prime puma prey.

The ranger headquarters is a charming red roofed farm house like chalet that had been a private residence surrounded by lush gardens and lawns. A placid black faced ibis was there to greet me as I arrived perched right on the roof peak above the entrance.

I did not have an appointment but lucked out



and got to meet Daniel Munoz, park superintendent who was smartly dressed (like Jim Whitehead) enthusiastic and optimistic (of course he was only 4 years from retirement). A fellow buffed ranger, Alberto, was in the office and shared in the patch exchange. As you can see from the background photo of us, there were patches in glass frames surrounding the walls of his office. When I arrived home Cindi Whitehead was house sitting for us and wanted some of the exchanged patches for her husband, Mike Whitehead. Mike and Mike, I struck patch paydirt for you guys, but it wasn't easy.

Perdido Moreno Glacier is the second main attraction in Las Glaciers National Park. It is only a 20 minute drive from park headquarters in El Calafate and the only major advancing glacier in this part of the Andes. There are boardwalks leading down to

viewing areas across the silt-laden green water of Lago Argentino. Here the glacier creaks and collapses in huge ice chunks from its 100 foot high head wall.

When the trail was closer to the lake shore, visitors were sometimes killed by flying shards of ice shooting across the lake. One recent day this year, the opening ranger found ice blocks on a trail bench so they closed that stretch of the trail and posted new warning signs. Fortunately no one has been injured or killed for many years even though these walkways are heavily used daily.

Does Argentina sound interesting? The next World Ranger Congress in 2027 will be held in Argentina near Iguazú Falls. Maybe you should be there too.

Wave Goodbye

Ross Henry

Roswell Thomas Henry, May 16, 1934, to January 12, 2025.



Ross was born in the San Francisco Bay Area but raised in the Los Angeles area. He served in the US Navy and attended UCLA and Long Beach State University, earning his degree in English. He married his beloved wife Kay on June 6, 1959, in Southern California.

Ross spent most of his professional life working for California's State Parks where he enjoyed a 30+ year career. He started as a State Park Ranger in the 1960's working at several state beaches on the South Coast. He later promoted to State Park headquarters in Sacramento.

He and Kay raised their 3 sons on a small ranch in nearby Orangevale. He retired as Chief of the Planning and Local Assistance Division in 1993. During his career, he earned a reputation as a poised speaker, successful leader and tireless advocate for parks. After retirement, Ross and Kay split their time between Graeagle and Borrego Springs, California.

Linda Cooper

Linda Lea Cooper 10/10/1949 - 2/7/2025.



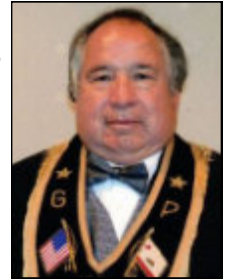
Linda's first museum job was at the Monterey Museum of Art, where, she curated exhibits related to William Morris and vintage carousels. Linda went on to a career with the California State Department of Parks and Recreation, developing unique programs as a museum curator and raising funds to protect early California and Native American artifacts. Her supervisor once told Linda's daughter, Anna, that "Linda was the best employee I ever had."

Linda's legacy and gifts to California include the restoration and remodel of Shasta State Historic Park's Courthouse Museum brick buildings and the restoration of the 1874 era Joss House in Weaverville.

She embodied an aspirational work ethic, honesty, and a pursuit of excellence. Anyone with a passion for museums or history will understand Linda's love of documentation. We know she would be thrilled it if you visited and enjoyed the results of her work.

Dwight Dutschke

Dwight Alan Dutschke, 74, passed away in his home on February 27, 2025.



Dwight spent his college years at California State University Fresno, where he was a member of the Alpha Gamma Rho fraternity, and graduated with a Bachelor of Science in 1975. Dwight also met his wife and lifelong partner, Ann, during college; the two were married in 1977 and raised their children in Dwight's hometown of Lone. Dwight dedicated his professional career to historic and cultural preservation and retired in 2013 after 35 years of service with the California Office of Historic Preservation.

A citizen of the Lone Band of Miwok Indians, Dwight grew up closely entwined with his Miwok heritage. He worked diligently with the Sierra Native American Council to organize an annual Big-Time celebration at Chaw'se State Historic Park for many years. He was a founding member of the Lone Band's Cultural Committee, the precursor to the Tribe's Cultural Resources Department, protecting important historical and cultural resources.

Kate Green Dick Menefee

Kate Victoria Erickson Green was born on September 11, 1981 in Mountain View, CA and passed away at home in Santa Rosa, on February 7, 2025 at age 43 due to appendiceal cancer.



She grew up in Lockeford, CA and attended Lockeford Elementary, Houston Middle, and graduated with high honors from Lodi High in 1999. Kate knew she wanted to be an archeologist at an early age. She attended UC Berkeley, and graduated with a BA in Anthropology in 2003.

She went on to attend Sonoma State and earned her MA in Cultural Resource Management in 2010 and began working for the Anthropological Studies Center on campus.

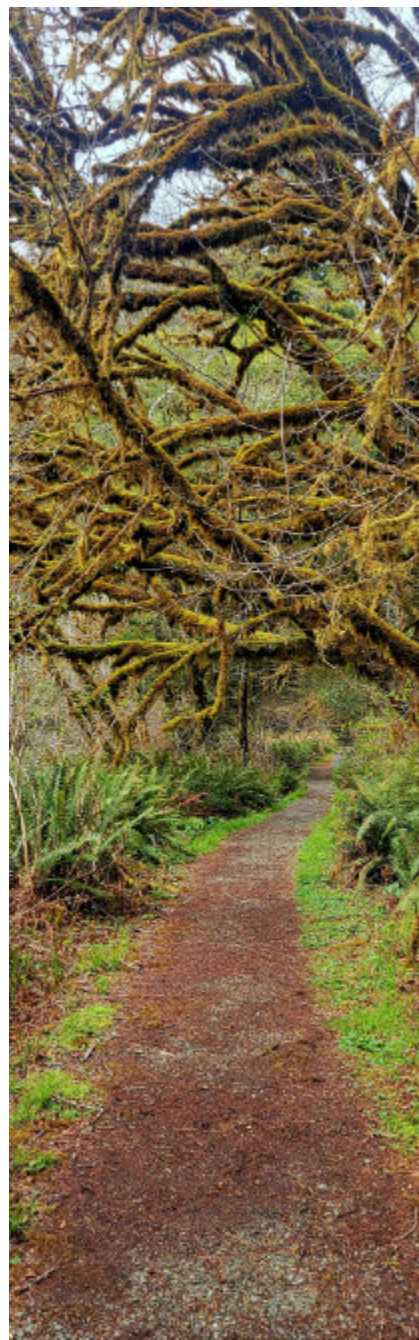
Over a 15+ year career in the North Bay, she mentored many graduate students, managed countless archeological projects, conserved and protected cultural resources, and earned the respect and admiration of her students and colleagues. Kate eventually attained her dream job as an archaeologist for the North Bay Region of California State Parks in 2017. She was born to be a steward of this land and she completed her life by finding her path in its wilderness and history.

Richard Lloyd “Dick” Menefee passed away on Sunday March 2, 2025, at the age of 91 years old.



In 1956 Dick was hired and began his dream career as a State Park Ranger with the California Division of Beaches and Parks, which in the late 1960’s became the California Department of Parks and Recreation. During his career with State Parks, his posts included Jedidiah Smith Redwoods State Park (1956-58); Morro Bay State Park (1958-63); Fort Tejon State Historic Park (1963-65); Doheny State Beach (1965-70); Santa Cruz Mtns Area State Parks (1970-72); Sonoma Area State Historic Parks (1972-76); State Parks Headquarters in Sacramento (1976-78); Pajaro Coast Area State Beaches, in Santa Cruz County (1978-87). Dick retired on July 7, 1987 from his final post as Area Supervisor IV of Pajaro Coast Area State Beaches, after serving nearly 32 years for California Department of Parks and Recreation.

In 1956, just prior to taking the position at Jedidiah Smith Redwoods State Park, Dick and Anabel welcomed their son, Micheal Lloyd Menefee. Then, in 1959 while stationed at Morro Bay State Park, their daughter, Pamela Ann Menefee, was born.



World Ranger Day is celebrated worldwide on July 31st to commemorate Rangers killed or injured in the line of duty and to celebrate the work Rangers do to protect the planet’s natural treasures and cultural heritage. This year’s commemoration will be co-sponsored by CSPRA in a San Louis Obispo County Park.

Mixed Metaphors & Malaprops

By Jeff Price, Retired

Here is another mixed up batch of overheard slips of the tongue and cerebral misfires. Sometimes people get so excited in public speaking, they mix comparisons and come up with some very funny concoctions. Feel free to send along any you hear - malaprops@cspira.com

Don't monkey around

This defeat and vote against Eric Cantor is coming at him like a barrel of trains in a tunnel.

The story almost got away?

Ya gotta love the press -- you can read volumes in what they don't print, even more in what they elude to.

Reflective camouflage?

You know politics, it's all done with smokescreens and mirrors.



Did he confuse cause and effect?

You are proposing a \$4 Billion park bond issue; isn't that putting the horse before the cart?

Some of these just can't be explained!

. . . his back is against the wall on 3rd down but he can still smell all the marbles.

Ranger Foundation — Rangers Helping Rangers. Our 501(c)3 charitable organization helped state park evacuees from the LA area wildfires with emergency grants. More information about how you can help [HERE](#).



CSPRA is affiliated with several other non-profit organizations that share our goals.

The Park Rangers Association of California is a professional organization for park Rangers and other employees of municipal, county, special district, state and federal agencies.



The International Ranger Federation supporting the critical work that the world's park rangers do in conserving our natural and cultural heritage.



Federation of Western Outdoor Clubs Promotion of the Proper Use, Enjoyment and Protection of America's Scenic Wilderness and Outdoor Resources.



Association of National Park Rangers communicating for, about and with National Park Service employees of all disciplines and providing a forum for professional enrichment



California Park Hospitality Association representing companies and individuals who provide hospitality services under contract with the California State Parks.

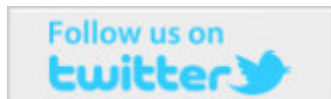


California League of Park Associations supporting the Non-profits that are partners with State Parks.





www.CSPRA.com

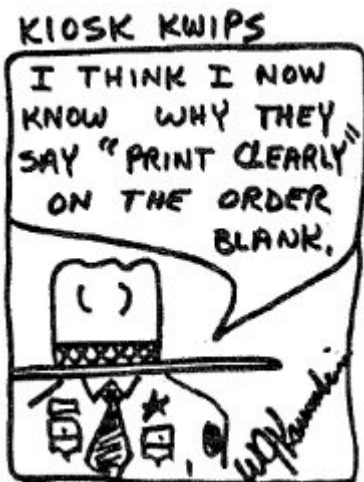


twitter.com/_CSPRA_



facebook.com/CSPRA

Are you Moving?
Please let us know.
Betsy@CSPRA.com



This "Kiosk Kwips" cartoon drawn by member Bill Krumbein appeared in the May 1980 CSPRA Newsletter. We look forward to having many past issues of the newsletter on our website, as webmaster Jeff Price scans, collates, uploads and links them. He has a good start so far, stay tuned.

Retiring Soon?

If you or a co-worker will be retiring soon, please contact Membership Services Coordinator Betsy Anderson at (707) 884-3949.
betsy@cspira.com.



Already Retired?

Want to keep in touch after you leave DPR? Join Gray-Bears email ListServ - FREE and EASY

graybears@cspira.com

Join CSPRA Or join us online at cspira.com

Name: _____

Address: _____

City _____ State _____ Zip _____

Job Classification: _____

District / Park: _____

Social Security # _____ (req'd for pay deduction)

Phone(W) _____ Phone (H) _____

Email: _____

Membership Type (Check one)

- ☐ Active \$10/month
- ☐ Active Retired \$60/year (\$5/mo.)
- ☐ Supporting \$36/year*
- ☐ Organization \$50/year*
- ☐ Benefactor \$1,000/life*

* Please include check for 1 year's dues for these membership levels.

I hereby authorize the State Controller to deduct from my salary and transmit as designated an amount for membership dues in the California State Park Rangers Association. This authorization will remain in effect until canceled by myself or by the organization. I certify I am a member of the above organization and understand that termination of my membership will cancel all deductions made under this organization.

Signature _____

Date _____

Membership by Mail:

CSPRA — Betsy Anderson
PO Box 618 Gualala, CA 95445



California State Park Rangers Association



CSPRA is an organization of State Park professionals dedicated to advancement of the highest principles of public service, established to support and preserve California State Parks for present and future generations

Founded 1964