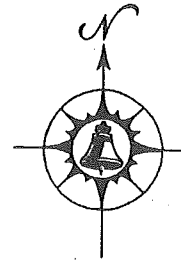


california state park rangers association

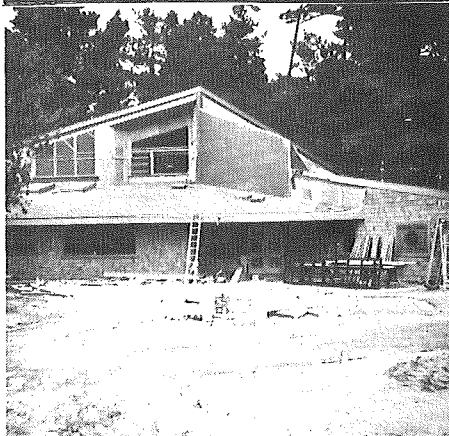
REPORTER

Volume V
Number 5
Jul-Aug, 1973



News For
All Points

Jack Welch, President, 2050 Alessandro Trail, Vista, CA 92083
Herman Schlerf, Vice Pres., 245 Arnold Way, Fortuna, CA 95540
Doug Bryce, Exec. Sec., 8665 Florin Rd #45, Sacramento, CA 95820



TRAINING CENTER TAKES SHAPE—The new Training Center building at Asilomar. Within is 10,000 square feet of useable space. The library is located lower left, ground-level.

Training Center Takes Shape

By Ken Jones

It seems only appropriate at this time that something should be said about the Department's new Training Center located at the Asilomar Conference Grounds in Pacific Grove. "Fabulous" does not adequately describe the new facility. For those of you fortunate enough to attend one of the formal training programs in years past, you were no doubt very much aware that our older facility had some built-in shortcomings.

Some of the improvements in the new Center include:

- Almost 10,000 square feet of useable space
- 2 conference rooms
- a second story lounge area
- 2 restrooms (This has been a real problem)
- Adequate storage and office space

Continued on page 6

Moving Expense Inquiry

[The following letter to the State Board of Control was sent in by President Jack Welch.]

...Mr. (Bernard B.) Bragg's situation is that he was transferred administratively by the Department from Angel Island State Park to Samuel P. Taylor State Park. The total distance between the two units is less than 50 miles. Under a recent ruling of the Internal Revenue Service, moving expense reimbursements are considered to be a fringe benefit and therefore must be treated as income. The expenses can be treated as a deduction when filing an income tax return unless the move involved less than 50 miles, as in Mr. Bragg's case. Since he was being moved off an island Mr. Bragg's moving costs were high. He had to pay \$291 income tax and social security on the amount paid to the movers by the Department.

The Department of Parks and Recreation fully supports Mr. Bragg's claim for reimbursement of the money he paid for income tax on the expenses in connection with his move. Further, we recommend that it be state policy to pay all such claims until the time that the Internal Revenue law can be changed. Moving expense reimbursements should not be considered as income. The employee gets no benefit from being moved by his employer. As everyone knows, moving is usually a strain on a family, not a fringe benefit, particularly when ordered by the employer.

We also recommend that the present Internal Revenue Service interpretations which treat moving expense reimbursements as income be questioned by the State of California for the following reasons:

1. The present ruling is not equitable. No employee should have to bear the cost of an employer-

Continued on page 5

Pay Raise to Supreme Court

The state park ranger cost-of-living increase together with all California State employees scheduled increases have been referred to the California State Supreme Court.

According to State Senator Donald Grunsky's office, the State Supreme Court has agreed to hear the case and should rule within two weeks whether the Cost of Living Council has jurisdiction over state employee salaries.

CSEA filed the suit in the State Supreme Court when the Council challenged the 11.9% average increase for state employees. The guidelines are set at a maximum of 5.5%

President's Message

Director Mott has informed me that the new Asilomar Training Center will be dedicated with an appropriate ceremony, tentatively planned for late October. He has invited our Association to participate or help in some way to further the program. I accepted and have appointed Ranger Ken Jones to coordinate our action with the dedication committee chairman, Mr. Stoddard P. Johnston, President of the Pacific Grove Asilomar Operating Corporation.

Director Mott's letter appears in this issue for your information. Of particular interest will be his last paragraph on the new state park film.

Also of interest to you will be the Director's statement to the State Board of Control on the recent Internal Revenue Service ruling which regards moving expense reimbursements as a fringe benefit and therefore must be treated as income. But, I'll let you read Director Mott's letter.

Continued on page 5

MEMBERS MAILBOX

[The following letter was sent in by President Jack Welch.]

Dear Jack:

As you know, we will be planning a rather elaborate dedication ceremony for the new ranger training center at Asilomar. Since the rangers of the Department have a very warm and close relationship with this training center, I feel that it would be quite appropriate that the Association give consideration as to what action it might take in connection with this dedication program. A committee of lay people has been formed to plan the program. They are putting together ideas relative to the ceremony. The committee is headed by Stoddard P. Johnston, who is President of the Pacific Grove-Asilomar Operating Corporation. I suggest that any ideas you may have be transmitted to Mr. Johnston at Asilomar. We certainly do want the Rangers' Association to be involved in the dedication ceremony. It is tentatively being planned for the latter part of October. The final date will depend on a time that will be suitable to the Governor. This is to provide you with advance information as to our planning effort.

Incidentally, I previewed the new state park film and believe it is going to be a very effective selling tool. Bill Dillinger will be getting in touch with you with regard to using the \$500 to acquire additional prints so that each district will have at least two prints available for use within the district.

/s/William Penn Mott, Jr.
Director

Dear Oren:

In The REPORTER for May-June, 1973, I was disconcerted, to put it mildly, to read the filler, "Why So Tired?" In my opinion, that filler was diametrically in opposition to the goals and performance of the California State Park Rangers' Association or any other professional organization related to civil service. Among the many goals set by the association, we are supposed to enhance the image and reputation of state park people and, by association, civil servants. The "Why So Tired?" filler set forth, again in

my opinion, a vision of the civil servant (and again by association, California State Park people) as a non-working, non-productive, part of the 2,000,000,000 population mentioned.

Contrary to that image, the people in District 6 have, for many years, donated great amounts of non-compensated overtime to the people of this state as members of the State Park team. In District 6, in one month alone, our people have performed more than 300 man days of non-compensated overtime - and this is the rule rather than the exception over the years. I am quite certain, that the State Park people in all the other districts and divisions have displayed the same kind of dedication over a long period of time. I suggest that the filler "Why So Tired?" was out of place in The REPORTER and I hope that the REPORTER will more nearly reflect the true picture on this subject in the future.

My sincere appreciation to you for your willingness to be involved as Editor of The REPORTER, I am sure that there are lots of other things you could be doing in your free time, in addition to the non-compensated overtime you undoubtedly donate to the cause.

/s/Jack Whitehead
Superintendent District 6

Oren,

I thought that this would be an appropriate article to print in The REPORTER. It's a shame, but I think the entire state should at least know about it.

Bill Krumbein, Ranger I here at Pajaro Coast mailed a similar article from a different paper to Jack Welch. He mentioned starting a fund of some kind. Since you have the paper I wanted to mail this to you also.

I'm sure our members would want to contribute as well as all other State Park Rangers in the spirit of fellowship.

Put out the call and everyone should reply. Thanks.

/s/Paul Hladik, Pajaro Coast

MARIN RANGER SLAIN TRACKING DEER
POACHERS

Clipped by Paul Hladik

A National Park Service ranger

was slain in the fog early yesterday morning [date unknown at this printing] at Point Reyes National Seashore in West Marin, after he apparently encountered a game poacher in a remote area near Mount Vision.

Another ranger found Kenneth C. Patrick, 40, a husband and father of three boys, dead from gunshot wounds.

Ranger Patrick, according to National Park Service officials, was killed while looking for deer poachers rumored to be at work on seashore lands.

His wife, told authorities he had left the family home at about 5 a.m. to search for the hunters.

He was armed, in uniform, and driving a National Park Service patrol car. He had told his wife he would return by about 6:30 for breakfast.

Mrs. Patrick tried to reach her husband several times by radio, then called Ranger Daniel Whittaker, who went to find his colleague.

When Whittaker drove up Mount Vision Overlook road, he spotted Patrick's car in the thick mist. The red police lights were on, and the engine was still running.

Whittaker then scoured the area, and 150 feet away he found Patrick's body in the wet brush next to the windy road.

Patrick had been shot once in the wrist and twice in the chest.

Authorities said the first shot in the chest apparently felled the ranger, and the second probably was fired while he lay dying. The final shot broke his breast-pocket name tag.

His service revolver was still strapped in its holster, indicating as one investigator said, "He never had a chance."

PRINTED ON RECYCLED PAPER

E.I.C. Reports

Bill Krumbein—Chairman

I'm taking over for a while as chairman, since Jim Hart recently resigned this post. I thank you, Jim, for your fine contributions—and know that you will remain active as a member of this committee.

To start our, I am seeking persons who will be active, contributing members of this committee. Having sent post cards to the present members, I'll know by the 15th of September how many of them wish to remain members. Please contact me by that date also.

Bill Krumbein
New Brighton SB
1500 Park Ave, & Hwy 1
Capitola, CA 95010

A few weeks ago I noticed an ad in TV Guide. Kool cigarettes. The lush, greenery and waterfall scene looked familiar. It's McArthur-Burney Falls! Do we really need advertisement money from cigarette companies?

From Environmental Bulletin:

—The Annual Bon Vivant Vichyssoise Memorial Award is not what you'd expect it to be. It is a garbage can — and each year the Center for Science in the Public Interest (CSPI) confers it on someone in the food industry in hope of encouraging positive change in what the public gets to eat.

And this year it seems that the people who have done most to further remove your food from the natural and nutritious are General Mills and Betty Crocker (a division of General Mills).

Dr. Michael Jacobson, who made the award in front of Miami Beach's Convention Hall, explained that the award was given to General Mills because the firm markets products that are detrimental to the health of children and adults, charges exorbitant prices and refuses to disclose information about the ingredients in its food.

Jacobson observed that such General Mills breakfast products as Kaboom, Sir Grapefellow, Baron von Redberry and Franken Berry contain 30 to 50 percent sugar. Total and Wheaties are identical cereals except for an extra 1/3 cent's worth more vitamins in Total which mushrooms to an 18% mark-up in the price. That, said the CSPI spokes-

man, is a 5400 percent increase and a \$10 million a year gyp."

According to Jacobson, General Mills also refuses to name chemical preservatives by name, and a recently seized Betty Crocker butter pecan cake mix contained no butter and no pecans, although it was so labeled.

Jacobson said, "Hunger, malnutrition, chronic illnesses will not be minimized in the United States until public health is accorded a higher priority than private wealth. We need a re-ordering of priorities in the food industry, with the customer's health receiving top billing."

—Designed to serve as an educational tool, a guide to direct action or a source book for purchasing agents and bulk paper users, The National Buyer's Guide to Recycled Paper proves useful to anyone interested in improving the environment. It is available from Environmental Educators, Inc., 1621 Connecticut Ave. NW, Washington, DC for \$4 a copy.

—"I have seen most of the world and have been to its highest mountains. I have walked the valleys of all the continents and seen their wonders. Now and then I have come across a sanctuary equal to our best. But when a full accounting is made there is no continent on earth equal in natural wonders and glories to what we have here.

"We must learn to love it as we would a fragile but precious child. Technology can destroy it. But it can also save it. Only we the people, not technology, have values, Love, respect, admiration, tenderness — these must be our attitude toward this biosphere if it is not to meet the technological Armageddon."

William O. Douglas
Associate Justice of the
Supreme Court

—Watch out! When you are recycling your aluminum cans, check carefully the Budweiser cans. Budweiser has come out with a new "drawn and ironed" Steel can, with a aluminum top. This can has seamless sides and no bottom lip.

—The Glass Container Manufacturers Institute and its members are projecting their "third record-breaking year for the nation's glass bottle recycling program," according to a press release from the or-

ganization. Members of GCMI reclaimed 240 million containers between January and March and, by extension, will probably recycle about 960 million by the end of the year.

One tidbit of information that this press release did not supply—one finds that the industry will produce in excess of 31.3 billion containers by the end of 1973. The record-breaking reclamation rate therefore translates into a whopping 3 percent.

California has a "bottle bill". It's Assembly Bill 594. Dixon and Boatwright. Bans the flip-top can and places a nickel deposit on all beverage containers. Write to your Assemblyman now, in support of this bill.

Aluminum can be recycled for less than 5% the energy needed to manufacture it in the first place. To recycle aluminum cans—we save both aesthetics and energy.

Thank You--in Poetry

George Hamilton, director of state parks, New Hampshire, says that, "we expected a lot of flack from out-of-state campers, but surprisingly the new policy has been accepted with very little criticism. New Hampshire is a mecca for the tourist camper. We found that campgrounds were being filled by out-of-state residents, yet New Hampshire residents were paying for the campground developments!"

We've had a grand reunion
And leave this note to say
That we thank a fine park ranger
For a very pleasant stay.

INQUIRY from page 1

ordered move regardless of the distance.

2. State of California regulations guarantee that reimbursement for moving expenses will be paid only for moves necessary for the benefit of the State, not for the benefit of the employee, and then only actual reasonable expenses will be paid.

3. Many moves under 50 miles are required by the State where the employee has no option whatsoever to commute. In the Department of Parks and Recreation this occurs primarily when

a. the employee is required to live in State housing at the location to which he is being transferred to provide security for the park, and

b. he must vacate State housing in the location he is leaving so that his replacement may have a place to live.

In addition, changes should be sought in the Internal Revenue law in the following order of priority:

1. Discontinue taxing employee reimbursement for actual moving expenses as additional income.

2. Obtain an exemption from the Internal Revenue Service interpretation for governmental agencies whose rules and regulations restrict moves to the necessity of the State.

3. Obtain an exemption from Internal Revenue Service regulations in all situation, regardless of distance involved, where the employee does not have an option to commute.

We further recommend that the Board of Control work with the California Legislature to obtain a change in State law as soon as possible so that the Franchise Tax Board will stop deducting State Income Tax from employees who have been forced to move by their employer.

Presently, the Internal Revenue Service requires immediate payment of the amount charged against the employee. This has resulted in the deduction of the entire amount for income tax payment out of one check. For example, in the case of Mr. Bragg, it resulted in \$291 being deducted from his normal take-home pay. This creates a considerable hardship on the employee. Until the laws can be changed, we suggest that installment payments be spread over a period of time to lighten the load on the employee. The Board

of Control should authorize departments to use their revolving funds to make the initial payment to the

Internal Revenue Service and then permit them to deduct the amount from the employee over a reasonable period of time.

I am sure your prompt and vigorous action in this matter will be appreciated by all state employees.

/s/Robert H. Meyer

Chief Deputy Director

Jr. Rangers Take Pledge

"Do your ears hang low? Do they wobble to and fro?" You'll never know unless you were one of the 697 youngsters who participated in the Junior Ranger Program at Pismo State Beach this summer.

What is the Junior Ranger program all about? It started several years ago as an anti-litter campaign. This year, as a result of the enthusiastic support of everyone involved, it has blossomed into a wide-ranging conservation-education program for campers, ages 5-14, that has grown to involve all phases of park operation.

Soon after the summer began, the seasonal Visitors Services Park Aid crew got together and pooled their many talents and past experiences and came up with the basic program. The main idea was to provide a valuable learning experience for the children. It had to be fun to do and in keeping with park philosophy. San Luis Coast Area Manager Chuck Lyden, Chief Ranger Bill Marshall, Maintenance Supervisor, Bob Robles, and Unit Supervisor Martin Brown plus District 5 Interpretive Specialist Mike Merkel's supply basket were able to provide additional guidelines and project ideas. The program was ready to begin.

Activities were scheduled four times a week and lasted about two hours. Each day the children would gather under a shady pine tree to talk about the State Park System, natural resources, and conservation. After learning a few funny songs, it would be time for a nature hike: perhaps a "jungle exploration around the wild lagoon" or a trek through the sand dunes. It might be a wildlife-discovery adventure, an Indian hike, a bird-watch walk, or a trip to the ocean to study marine ecology and build sand castles, re-emphasizing where ever possible the parks-conservation program idea. Many times, a member of the Maintenance staff would join

the hike to explain the care of campground landscaping, the cost of litter cleanup, and some of their behind-the-scenes activities. After the hike was over, the children made collages, or drew pictures and wrote stories about what they had learned. Then it was time to practice skits for that evening's campfire program. Pismo State Beach has never seen such fine quality actors!

At the end of the day's activities, one of the Pismo State Beach Rangers was on hand to graduate the new class of Junior Rangers, and give a patch to each who had participated in the program. And there is no measure of the success of the program greater than the smiles of the parents faces and the pride with which the children wore their new Junior Ranger patches.

JUNIOR RANGER PLEDGE

"As a Junior Ranger I will learn to understand, appreciate, and work toward the preservation of the natural resources of my country. In doing so, I have left Pismo State Beach better than I found it. I will strive to do the same everywhere and at all times by making conservation a part of my daily life."

MESSAGE from page 1

rector Mott's letter since he explains the situation fully.

As President of CSPRA I must apologize to all of you for the rather interrupted schedule of our REPORTER. The Board will meet in Santa Cruz on September 8, 1973, and one of our main concerns will be to discuss and determine procedures which will ensure regularly scheduled delivery of your paper.

/s/Jack Welch, President

PRINTED ON RECYCLED PAPER

Proposition 1

By Jerry Henderson

Do you think California needs more parks? Do you believe that strong enough that you're willing to do something about it? Or, are you one of those who like to complain about how no one ever does anything?

Proposition One, on the ballot for June of 1974, provides 250 million dollars for park purposes at the city, county, and state level. Its passage is imperative if we are to continue an aggressive park acquisition program. A lot of us are sitting back and saying, "Ah, it'll pass so why worry"; Well we have no assurance that Proposition One will pass and we will look pretty stupid if the issue fails and we never lifted a hand to help.

The California State Park Rangers' Association has voted as a group to work for the passage of Proposition 1. The question is whether we as individuals are willing to do any thing more than give lip service to the promotion of this important proposition. I'm asking each of you right now to make a commitment. Say right now that you think Proposition 1 is important. So many issues in the past years have been negative. Here's a chance to be for something positive. Drop me a card or a letter. Tell me how you would like to help. Would you be willing to speak to groups in your area if we make the arrangements for you. How about ideas on how to conduct our campaign. Bill Krumbein has suggested bumper stickers. What do you think? We have \$1500 budgeted for the campaign. If you're willing to help there's no reason why we can't get local groups to help us in handing out literature. If you care, we can prepare slide talks to aid you in making presentations to groups in your community.

Please write me right now with your ideas, suggestions, what have you.

Jerry Henderson
1710 N. Martin
Banning, CA 92220

TRAINING CENTER from Page 1

—A large room designed to house the Holman Natural History Library Collection.

In addition to the tremendous improvements in the Training Center there are three new lodging facilities each capable of accommodating twenty persons. Two training participants will be assigned one room enabling us to comfortably house sixty participants at one time. This gives us new capability of being able to conduct two programs simultaneously.

The Department will continue to contract with the Asilomar Corporation for use of these new facilities approximately nine months a year. The Training Staff will maintain permanent offices in the Center year around. The center is scheduled to open September 16 and the lodging facilities are already in service. Planning for a large dedication ceremony is underway and tentatively scheduled for late October or early November. CSPRA will be represented.

The Department intends to conduct seven formal training programs this fiscal year. They are: 6 classes - Basic Peace Officer Training; 3 classes - Ranger Trainee Program; 2 classes - Supervisory Practices; 1 class - Historical Preservation; 1 class - Maintenance Management; 2 classes Investigating Your Environment.

All things considered; the long-awaited facility, greater flexibility in scheduling of formal training, and an atmosphere conducive to training should enable us to progress and professionalize another notch. And that's what it's all about.

PRINTED ON RECYCLED PAPER

official publication for the
CALIFORNIA STATE PARK RANGERS ASSOC.
The REPORTER, published monthly
Oren Welch, Editor
198 South Halcyon Road
Arroyo Grande, CA 93420

Events Calendar

SEPT 8—Board of Directors Meeting at Santa Cruz, Holiday Inn.

OCTOBER—Nominating Committees to meet for Region 2, 4, & 6 and for Presidential and Vice Presidential nominations.

LATE OCTOBER—Tentative date for dedicating the new Training Center at Asilomar.



TRAINING CENTER TAKES SHAPE—One of three lodging facilities at the DPR Training Center in Asilomar for training participants. Each building contains ten bedrooms and one large conference/living room area.



ALVORD AND FERGUSON

434 West 17th Street
P.O. Box 677
Merced, California 95340
Phone (209)722-8854

First Class