

california state park rangers association



NEWSLETTER

JANUARY

1984

ISSUE
NUMBER 44

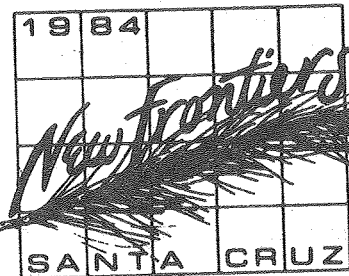
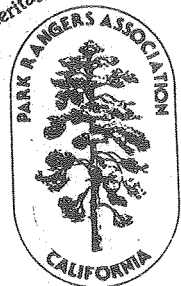
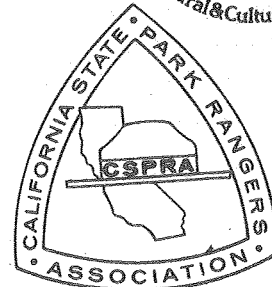
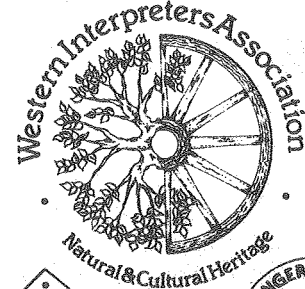


➡ JEFF PRICE
Elected President
➡ BOB GRACE
➡ JOAN GRAMMER
Join CSPRA Board
➡ KEN GRAY
New Treasurer

The membership of CSPRA has chosen Jeff Price to be our next President. Jeff will take office at the GEC in March. President Mott will continue in office until that time. The new Board members, Joan Grammer and Bob Grace, as well as Treasurer Ken Gray have already begun in their elected positions.

The constitutional amendment put before the membership was defeated by 68% of the votes received. The amendment would have created a vice-president/ president position.

CSPRA members were also ask to designate three tasks that they would like to see accomplished in the next two years. The results of this survey and the Resident Camper's Survey will be published in the next issue.



REGISTER NOW
FOR THE JOINT
CONFERENCE!

Career Coursework

In the upcoming months there are a few courses you may be interested in. The three I've listed have been of particular interest to CSPRA members in the past. For more information on the individual courses contact the schools direct. Remember, if you find the price hard to swallow the Education and Training Committee can help in the form of a scholarship. Write me for details on how to apply for a grant. Steve Horvitz, 110 Mara Ave., Ventura, CA 93004. (H)(805)659-1878.

OFFICER SURVIVAL Feb. 6 - 10, 40 hours

Redwoods Center, Eureka, CA 95501

This course includes instruction in, and demonstration of law enforcement encounters, primarily during patrol. Students will go through a series of specially constructed field problems illustrating survival skills.

YELLOWSTONE WINTER COURSE Feb. 1 - 14

National Outdoor Leadership School, Admissions Office
P.O.Box AA

Lander, Wyoming 82520

College credit from the University of Utah is available for this two week course on winter camping, practical leadership, map reading, winter emergency procedures, winter expedition planning, snow shelter construction, and the art of staying warm and dry. The tuition for this course is rather significant, at \$725.00. However, NOLS does offer scholarships. Contact them for details.

SPRING IN CALIFORNIA DESERTS April 15 - 20

Natural Excursions

Point Reyes Bird Observatory

4990 Shoreline Highway, Stinson Beach, CA 94970

This exploration into the remote regions of the California desert should coincide with the peak wildflower bloom and bird migration for the spring. Follow the seasonal and ecological transition from the southern Colorado to the northern Mohave desert in search of birds and plants characteristic of arid lands. Explore Anza Borrego desert as well as the Mohave, including Providence Mountains, Kelso Dunes, and the lush oasis of the Amargosa drainage. \$135.00 for members, \$145.00 for non-members.

=====

CSPRA NEWSLETTER Published for its members by the California State Park Rangers Association, John Mott, President. Editors: Wendy Lieber and Mark Faull, 95 Kelly Avenue, Half Moon Bay, California 94019. Publication deadline is the 15th of each month. CSPRA is a tax-exempt corporation. Dues are tax deductible. IRS #23-7088236.

CHANGE OF ADDRESS Contact Doug Bryce, Box 28366, Sacramento, CA. 95828

DEFEATING THE BUREAUCRATIC BLUES

TEAM BUILDING IN THE PARKS

by Rick Parmer

(This is the second in a three-part series)

How many times have you got all enthused about a terrific idea to improve your DPR workplace? Quite a few, huh? Now let me ask: How many became a reality? Oops, batting average not so good you say.

There are lots of good ideas out there. The problem is in the follow through. Motivation specialists from gurus to time management consultants will tell you so. Then for an additional fee -- psychic or monetary -- they will draw a path to the goal.

Several years ago, the department set up a "Management By Objective" program. Goals and objectives were defined down to the Area level, and in some cases, the park unit. This program was designed to forge a team approach to the challenges facing the State Park System.

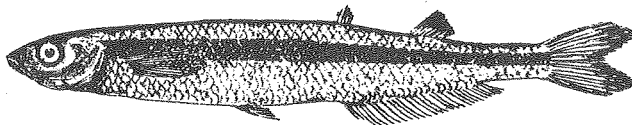
The results of the several informal interviews with field and management personnel were surprisingly similar when queried about the program. Most felt the idea was sound but, ironically, failed due to lack of follow through. The process set up to develop objective criteria for appraising "team" performance on park projects was never implemented with few exceptions.

Some flatly stated the whole thing ended up being a waste of time.

I finished the interviews with two questions: 1) Are systematic goals and objectives really needed to improve productivity on an individual basis? 2) Can a MBO program be effective today? If not, how could it foster greater teamwork?

Responses were mixed. Many felt unit or office objectives did improve individual productivity. Two stated the problem was accountability. Performance standards were not consistently adhered to.

On the second question, half were for a MBO program and half against. Most of the opposition against the MBO centered on the need for supervision and management leadership. Holding the team accountable for progress on unit or office objectives/projects made "finger pointing" less necessary when problems occurred. This created a much healthier work atmosphere they said.



VENOMOUS ATTACK

By now many of you have probably seen an article in your local newspaper written by State Senator H.L. Richardson which depicts a fictional confrontation between a worried camper, a State Park Ranger, and a rattlesnake. In case you've missed it I'll recap the plotline leaving out the Senator's exaggerated and sarcastic dialogue style.

A camper awakens to find a rattler sleeping next to his foot. He petitions a nearby park ranger to shoot the rattler but the ranger refuses stating it is against Fish and Game regulations to kill the snake unless it poses a threat to humans or livestock. The ranger explains that the snake is also protected because it is within a state park. The snake awakens and begins crawling up the camper's leg. the camper throws it off his leg and kills it with a rock. The ranger angrily writes the camper a citation. The Senator blames this sorry state of affairs on Fish and Game Commission appointments made by "Jerry Ruff and Ready Brown" and "some of these ecco(sic) freaks our state colleges are turning out."

The following rebuttal was sent to the Senator and to several California newspapers by President Mott. If your local paper has printed Senator Richardson's article and you'd like to have CSPRA's rebuttal printed please contact President Mott.

Dear Senator Richardson,

The California State Park Rangers Association is shocked and dismayed by your article "How Knowledge Can Protect State Serpents", which you sent to numerous California newspapers in November.

OUR FIRST CONCERN is that you contributed to an unnecessary public fear of rattlesnakes by implying that rattlesnakes are dangerous, and aggressively seek out human victims. Your fears are grossly unfounded. During my eleven year career with the State Park System, I have never heard of an unprovoked rattlesnake killing or injuring a park visitor. I do know of incidents in which people were bitten by rattlesnakes, however, these "victims" were either taunting the snake or displaying gross negligence in handling the snake. I encourage to read available literature and to talk with rangers, herpetologists and other specialists. If you do, you will learn that your fears of rattlesnakes are tremendously overrated and that rattlesnakes are very shy, nonaggressive creatures which rely on camouflage (not poison fangs) as their primary defense. This can be seen in the following 1982 figures from the California Center for Health Statistics:

0 People died from poisonous snake bites
7 People died from insect bites or stings
1677 People died when their firearms accidentally discharged.
4954 People died in motor vehicle accidents

Statistics for the previous year show similar proportions.

We are dismayed that you, as a public servant, have decided to concentrate your energies and our tax dollars on such an insignificant problem.

Experts and outdoorsmen agree that traditional public opinion of rattlesnakes has been based on fear and folklore, NOT FACTS. Rattlesnakes are NOT a significant danger to California's citizens and they should be given every chance to live along with other types of wildlife. CSPRA applauds the California Fish and Game Commission for their courage and foresight in granting rattlesnakes the protection they deserve. We fully support and will continue to enforce and explain California Administrative Code Title 14 Section 2 which states: "Rattlesnakes are fully protected unless they present an immediate threat to safety of humans, pets or livestock".

OUR SECOND CONCERN is that you displayed an unwarranted disrespect for State Park Rangers. Your article characterized State Park Rangers as "smirking, youthful, bearded eco-freaks". Again, your ignorance of reality is appalling. Each year the California Department of Parks and Recreation (D.P.R.) receives hundreds of letters commending its field employees. Fieldstaff (the average ranger is 36 and has 10 years service with D.P.R.) assisted over 60 million visitors with having safe, enjoyable and rewarding experiences in our State Parks, Beaches and Recreation Areas. They treated thousands of accident victims and saved numerous lives. The Governor's Medal of Valor has been presented almost annually to individual rangers for performance above and beyond the call of duty.

Public service is the cornerstone of our profession. To be insulted and publically ridiculed for explaining State Laws to Park visitors is a poor way of correcting mythical problems you perceive with State Park employees. Your article was both reckless and unfounded. An apology is in order.

OUR THIRD AND FINAL CONCERN is that you exhibited total disregard for the responsibilities of an elected official. As a State Senator, you failed to honor and support the laws you and your colleagues have asked Commissions to write and ratify. By making a mockery of the Fish and Game Commission and their laws, you are encouraging disrespect for laws and lawmakers in general. You certainly have not made the jobs of Wardens and Rangers any easier. Articles such as yours benefit no one.

Please feel free to contact me if I or the California State Park Rangers Association can be of assistance. I encourage you to visit your State Parks and hike some trails. You will be pleasantly surprised.

Sincerely,
John Mott
President, CSPRA

CAMPING ASSOCIATION CONFERENCE SET

Hundreds of recreation professionals from all over the United States will be attending the American Camping Association's 1984 "A Whale of a Convention" February 28 through March 3 in San Diego.

The convention will take place at the Town and Country Hotel and will feature over 90 exhibits, 65 workshops, eight in-depth seminars, various recreational outings, a job mart, kindred group meetings, and many other events and activities available at your discretion.

While the convention is geared towards the camping profession, many aspects can be directly applicable to various other areas of recreation. Some of the topics covered will include; Behavior Management, Staff Recruitment, Public Relations, Promoting and Marketing Your Program, Stress Management, Effective Budgeting, Time Management, Volunteer Development, Risk Management and Estate Planning, just to name a few.

Experience the beauty of San Diego, gain new insight into topics directly related to you and your job, meet and exchange ideas with recreation professionals from all over the United States and treat yourself to a variety of recreational activities. All this and much more is in store for you February 28 through March 3 at ACA's 1984 "A Whale of a Convention." C'mon down, you'll be glad you did!

For further information, contact the American Camping Association, Southern California Section office at; CSULB Room 216, 1250 Bellflower Blvd., Long Beach, CA 90840, 213/498-5781.

MAINTENANCE COMMITTEE

THE MAINTENANCE COMMITTEE IS NOW A REALITY !! WELCOME ABOARD LARRY TIERNEY, CHAIRMAN OF CSPRA'S NEWEST COMMITTEE.

The Maintenance Committee currently has four major functions:

- 1) Promote and advertise maintenance training opportunities.
- 2) Develop meaningful lines of communication between Maintenance and Visitor Services. Encourage positive interactions whenever possible.
- 3) Promote the professional standing of CSPRA's Maintenance members.
- 4) Provide a forum where issues and ideas affecting CSPRA's Maintenance members may be examined and discussed.

TO LARRY AND THE MAINTENANCE COMMITTEE WE EXTEND OUR CONGRATULATIONS AND BEST WISHES FOR MANY SUCCESSES.

To contact the Maintenance Committee write or call:

Larry Tierney
308 B Park Ave.
Capitola, CA 95010
(H) (408) 462-1523
(W) (408) 338-4124

CSPRA JOINS APPEAL TO U.S. SUPREME COURT!

As one of 22 environmental groups that joined together in suit against the U.S. Department of the Interior, CSPRA had great hopes that Lease Sale #73 would be halted before the bids were opened. The suit was combined with one filed by the California Coastal Commission and 8 California cities and counties. The suit asked for an injunction on the Lease Sale until the case could be decided in the courts. The case was based on the inconsistency of the Lease Sale with the Coastal Zone Management Plan, the lack of opportunity for neighboring cities and counties to participate in the early stages of planning and the threats to endangered species by oil and gas development in the area. The injunction was granted by the District Court of Appeals. Despite two additional appeals by the Interior Department, the Circuit Court of Appeals upheld the District Court's injunction. Each Circuit Court has a Supreme Court Justice assigned to it for administration and these Justices may act above the Circuit Court in certain emergency situations. Unfortunately for CSPRA and the rest of the plaintiffs this injunction qualified as an emergency situation and further bad luck made U.S. Supreme Court Justice William Rehnquist the man to make the decision.

On December 20, Justice Rehnquist overturned the Circuit Court decision and the gave the go-ahead to the Department of the Interior to process the bids for Lease Sale #73.

The good news is that the bids received are so low that the Interior Department may be forced to reject them in order to avoid a barrage of criticism. The total sum of high bids received was only \$16.2 million dollars. Compare this to the \$2.3 billion that was bid just two years ago on the smaller Lease Sale #53. It is possible that the entire sale will be re-offered. The oil industry blamed the low bids on the more stringent environmental safeguards integrated into the sale. They say the added costs discouraged development.

The suit has been appealed by the Natural Resources Defense Council and the Coalition on Offshore Oil Leasing(of which CSPRA is a member) but it may take years for the case to reach the docket. The U.S. Supreme Court will soon be hearing a similar case on Lease Sale #53 and it is probable that the outcome of that case will be tied to the latest suit.

In a related issue, President Reagan signed the Interior Appropriations Bill for 1984 that included a one year moratorium on oil development in parts of the California coastline. This action blocks the planned Lease Sale 91 for central and northern California for at least one more year.



GILLNET LEGISLATION SOON TO BE INTRODUCED

Numerous meetings have been held throughout the Bay Area in the past few months in an attempt to solve the many problems that gillnet fishing has brought to the marine environment. The goal of these meetings has been to reach compromise restrictions on the fishery that can be introduced into the next legislative session in the form of a bill. Several Assembly members have already expressed interest in sponsoring the legislation. All of the limitations suggested are within the area of Point Reyes south to Ano Nuevo State Reserve.

IF GILLNETTING IS A PROBLEM IN YOUR AREA now is the chance to contact your Assembly member. It is possible, with adequate documentation, to approach your local representative with proposals for closures in other parts of the state through the amendment process. There is no reason why a bill must be confined only to central California. The restrictions offered so far are limited to a specific season(i.e. May 15-Sept 30), a specific geographical area(Pt. A to Pt. B) and a specific fathom or nautical mile range. If you have questions, please contact:
Wendy Lieber
(address on end page)

A Can and Bottle Bill Does The Following:

- ☒ Requires a minimum refundable deposit of 5¢ on all beer and soft drinks in bottles and cans.
- ☒ Requires stores to redeem empty containers of the brands they sell and allows recycling centers to serve as redemption centers.
- ☒ Penalizes those who ACTUALLY litter and rewards those who pick it up.
- ☒ Achieves its objectives without more government programs or additional taxation.
- ☒ Takes advantage of an existing time-proven refillable system familiar to most consumers.

RESERVE YOUR ROOM

Rates at the Holiday Inn, Santa Cruz for the upcoming GEC are \$39 per night for single or \$45 per night for 2, 3, or 4 persons. Phone number is (408) 426-7100.

Manager's Forum at GEC

Director Briner has, with great enthusiasm, accepted CSPRA's invitation to participate in the Manager's Forum set for GEC in Santa Cruz, March 11-15, 1984.

The Forum has been rescheduled for Tuesday, March 13th, from 1330-1500 hours. The room location is to be announced at the GEC.

Dick Menefee has accepted the role as moderator and will be appointing a three member Manager Forum panel to address the management issues with the Director.

As Forum topics will be limited to management issues it should be of particular interest to Department of Parks and Recreation Managers; however, everyone will be welcome to attend the Forum and hear the issues and answers.

Managers - this is YOUR forum. Plan on being there. Whether or not you can make it, plan on being a part of the program by submitting your management issue concerns to: Dick Menefee, 1500 Park Avenue, Capitola, CA 95010.

SEE YOU IN SANTA CRUZ!

LEGISLATIVE MONITOR

With the Legislature going back in session in January, bills again will start surfacing for your study and action. This session is an important one due to the State Parks Bond issue (AB2099 - Farr) entering the Senate and then moving towards the Governor's desk. Your State Senator and Governor need your letters of support -- send it now! Also this session I will attempt to alert units affected by specific bills (i.e. Tule Elk drilling proposal) so watch for incoming messages. Per the usual, contact me if you have any questions or suggestions.

Mike Whitehead
P.O.Box 8
Bodega Bay, CA
94923

WELCOME
NEW MEMBERS

BONNIE PORTER
ROCKLIN

SANDRA LAIRD
BELMONT

LUCINDA WOODWARD
SACRAMENTO

KATHLEEN MURPHY DOLINAR
MALIBU

BRENDA BOSWELL
SACRAMENTO

MONO LAKE IS TWO YEARS OLD

by Janet Carle

Mono Lake Tufa State Reserve will be two years old in January 1984. A lot of progress has been made, and more and more visitors are coming to enjoy Mono Lake.

The staff's main effort has been providing access and information to the public. Two exhibit shelters are up, and three more on the way. A small boardwalk has been laid across the muddy areas on the trail to the north shore tufa area near the County Park. A self-guided nature trail was installed at the South Tufa area in early November. This trail will provide all visitors with some basic information- - - with a staff of one, most visitors never see a ranger!

An extensive interpretive program was offered last summer. A weekly campfire program was held in a large U.S. Forest Service campground in June Lake, a Saturday night star show was done on the lakeshore, and two Tufa Walks were presented each Saturday and Sunday. Tufa Walks are continuing through the winter on weekends, becoming cross-country ski tours when the snow is deep enough.

School group tours have been surprisingly in demand. In such a remote location, school children are scarce- - - but groups have come from as far away as Bishop (65 miles) and Coleville (60 miles) as well as from Southern California on longer trips. And every college geology class in California seems to visit Mono Lake in the spring!

Another effort has been the cleanup of years of accumulated rubble in the Reserve. Barrels, tires and ordinary litter have been moved out little by little. A major step forward was taken in October, when a Sierra Club work party coiled hundreds of yards of detonator wire left along Navy Beach by a weapons testing team in the early 1960's.

A photo inventory of the major tufa tower areas, boundary marking, and signing are continuing projects.

One goal this winter is to increase attendance by better publicity of our cross country ski tours. With two major ski resorts nearby (Mammoth Mountain is the largest in the U.S.) the potential exists for lots of winter visitors. Cal Trans has agreed to begin plowing the South Tufa access road this winter.

Two successful Photo Workshops have been held in the Reserve, one in July and one in October. Sponsored by the Tahoe Sierra State Parks Association and taught by local professional photographer Larry Ford, the Workshops introduce participants to the magnificent photographic opportunities of Mono Lake.

Visitation has continued to increase as the Tufa Reserve becomes better known. Attendance in October of this year was twice that of 1982. More and more people are discovering the serene beauty of Mono Lake. Please come see for yourself!

DEUKMEJIAN SKIRTS THE PANTS ISSUE

Radio station KFBK of Sacramento was broadcasting statewide and Governor Deukmejian was the talk show host. Calls came in from throughout the State but to me none was as crucial as the question raised by "Heidi, an assistant park ranger from southern California". Its an issue I ponder four mornings a week as I slip into that low-slung long-line girdle commonly called "field trousers/ranger uniform". Heidi asked why women rangers were forced to wear men's pants on the job. Deukmejian sidestepped the issue and suggested she take the issue up with the Parks and Recreation Department. Well, RIGHT ON HEIDI! (Whoever you may be. I know of only one.) Sometimes I need a stepladder to get up in the bed of the pickup because my pants are so tight. A typically constructed female, I have large hip bones with very little padding. I often find myself walking back from a day in the field holding my POPE gear up away from hips because the bones beneath are so sore. I remarked to a park aid a few days ago that "my gun was killing me" and didn't even get the joke till she doubled over. What I need are pants that go to the waist and allow me to have my "over 30" thighs. I could wear a skirt but it doesn't work too well with my rainpants. Besides, DOM doesn't seem to allow green leg-warmers. Help!

Past Presidents Luncheon

The California State Park Rangers Association will again be sponsoring a luncheon honoring all past Presidents on March 14, 1984 from noon to one p.m. at the Santa Cruz Holiday Inn. The luncheon is open to all CSPRA members however space is limited so register early to assure your place with CSPRA's top executives.

To attend simply fill in the "CSPRA Luncheon" box on your Joint Conference Registration form or clip and mail the following form:

mail to: Doug Bryce

P.O.Box 28366

Sacramento, CA 95828

Dear Joint Conference Committee,

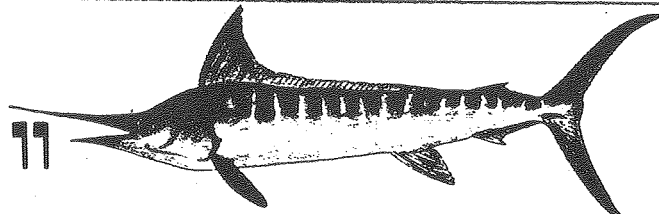
Yes, I would like to attend the CSPRA Past Presidents Luncheon on 3/14/84. I understand the \$10.00 per person fee includes the meal, tip, and beverages. I enclose a check payable to "Joint Conference Committee" to reserve _____ places for lunch.

Thank you,

Name _____

Address _____

Phone _____



State Parks Calendar

Each December I make the annual journey to bookstores in search of the finest calendars for the approaching new year. As I flip through the pages I am transported far beyond the store's walls to remote and familiar natural wonders. It is an opportunity to learn about new areas with photographic potential, and to review techniques that other photographers are utilizing. As an exercise, analyze composition and also try to determine what exposure, camera format, film type and lens the photographer was using. What was the photographer attempting to communicate?

As a California State Park Ranger I am always very interested in seeing published images of parks within our system. Unfortunately, they appear only sporadically in the calendars that are currently available. In order to focus public attention and foster appreciation for our entire system of parks I hope to publish a high quality color photographic 1985 wall calendar on the California State Parks. Both the spectacular beauty and diversity of the system make it an excellent subject. The 8 $\frac{1}{4}$ " X 11 $\frac{5}{8}$ " calendar would include 14 color photographs, important dates in State Park history, park events, lunar phases, etc. The suggested retail price would be \$5.95 with substantial quantity discounts on wholesale orders.

In order for this project to become a reality, it is critical that cooperating associations join together in common support. Pre-publication orders of at least 300 copies are needed from large associations. Please submit a list of important events at your park (limit 3 per park). The deadline for pre-publication orders and event submissions is fast approaching: January 25, 1984. For further information please contact:

Frank Balthis
Photography- Nature's Image
P.O. Box 255
Davenport, CA 95017
Home (408) 426-8205

ENVIRONMENTAL UPDATE

CONDORS. The federal government is negotiating for the purchase of a 13,000 acre ranch that serves as a crucial feeding ground for the approximately 20 California Condors remaining in the wild. Congress has appropriated \$5 million for the acquisition of the Hudson Ranch 130 miles northwest of Los Angeles in southern Kern County.

WILDERNESS AREAS. A new report by the U.S.G.S. says Western wilderness lands contain only a fraction of undiscovered useable gas and oil. Dispelling the popular myth that that wilderness areas are "energy lockups" that report stated that wilderness areas in western states account for only 2.7% of the oil and 5.3% of the natural gas found in those states. A study conducted in 1982 by the Wilderness Society came to similar conclusions.

Washington Report


It seems incredible to me that four years have passed since I left the parks and moved to Washington D.C. to accept a position with the State Department. The thing that struck me the most about the transition was the difference in the type of people in the two jobs. We all like to think of ourselves as individuals, but we share many of the characteristics of our professional peers. A meaningful outdoor experience to a Washington bureaucrat is attending the Beach Boys concert on the Capital Mall. Our attitudes about life are based to a certain extent on our experience. To most of my colleagues a confrontation is something that occurs when nasty memos start flying back and forth.

Incidents that are so common to most rangers that they aren't even talked about are so mind-boggling to those who inhabit the ivy league halls of officialdom that my "ranger stories" invariably draw a large crowd of breathless listeners. Those who haven't worked in Washington for at least fifteen years are considered newcomers and are always asked: "What did you do before...?". When I say "I was a Ranger", it usually draws a reply like: "Great job you guys did in Grenada!". After I explain that I was a park ranger, not an airborne ranger, it produces the shocked response: "You left that to come here?".

Every job has its advantages and disadvantages. The main disadvantage here is the commute and the traffic. One of the advantages is the travel. Last year, I spent 90 days overseas on various consultations at U.S. embassies abroad and visited fourteen countries. I can honestly say that all the places that I visited, few moved me more than the coast of California and the magnificent redwoods. While I was a ranger it was my pleasure to know many fine individuals and, as a group, the California State Park Rangers are still a special breed of people.

I was in trainee group "H" at Folsom Lake and served as a Ranger I in the Santa Cruz Mountains from 1973 until 1980. I would like to hear from all my old friends and encourage them to visit me if they are ever in the Washington area.

Dan Friend
1123 Moorefield Hill Ct.
Vienna, VA 22180

 ACID RAIN. The California State Air Resources Board has begun a 5-year study of acid rain by monitoring harmful effects to California crops, lakes, stream and human health. The study includes monitoring the effects of acid fog on urban dwellers, snow sampling in the Lake Tahoe Basin, monitoring acid deposits in the Los Angeles basin and analysis of water chemistry in the Sierra Nevada.

★★ Membership ★★

Please send me more information on the benefits of CSPRA membership.

ELM'S

Complete Uniform Supply

name

street

city

state

zip

For

CALIF. STATE PARKS

1028 Mission Ave.

102 E. Main St.

Oceanside, Calif.

El Cajon, Calif.

92054

92020

Phone 619-722-4957

Phone 619-444-1040

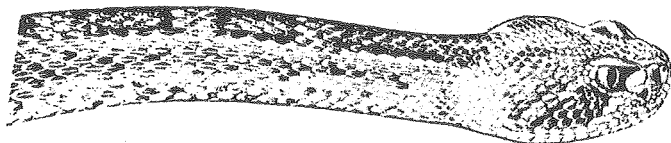
Clip and mail to Doug Bryce, CSPRA
P.O. Box 28366, Sacto, CA 95828

SEND FOR PRICE LIST & ORDER FORMS

ENVIRONMENTAL UPDATE CONTINUED

HOWARD "DON" CARPER. A coalition of environmental groups have begun efforts to persuade Governor Deukmejian to withdraw the appointment of Mr. Carper as Director of Fish and Game. They will also start a campaign statewide aimed at denying Carper's confirmation by the California Senate. The coalition includes the Sierra Club, the League of Conservation Voters, the California Wilderness Association, Fund for Animals, Friends of the Earth, the Natural Resources Defense Council and several Audubon Society chapters. Carper is criticized by the environmentalists for "his negative attitude toward wildlife preservation, his opposition to wilderness preservation programs, for proposals to extend deer hunting to does and to allow mountain lion hunts, and for failing to oppose draining of Tulare Lake.

ATTENTION EUREKANS!! One public hearing on the Gorda Ridge Deep-Sea Strip Mining Lease Sale will be held in California. It will be in Eureka on Thursday, February 16. One hearing will also be held in Coos Bay, Oregon. The Interior Department is allowing 60-days public comment on the venture ending February 29, 1984. Does anyone up there have the 16th of February free? The machinery to mine the polymettalic sulfides that are at depths of 8,000 to 10,000 feet have yet to be invented. Envisioned at this time are gigantic undersea bulldozers digging deep into the seafloor. A huge suction dredge would vacuum the sediment onto barges on the surface. One of the dangers on this proposed operation would be the release of plume of toxic sediment into the stratified waters of the deep ocean where toxic materials could travel long distances along the seafloor. Biological communities that exist on the seafloor by chemo-synthesis (no photosynthesis down there) are just being researched and there importance to the marine environment are still largely unknown.



CSPRA SALES ITEMS

POLICE IDENTIFICATION GUIDE 16.92 TAX 1.02 TOTAL \$18.00
NON MEMBERS ADD \$1 HANDLING & SHIPPING

DECALS 3	.94	TAX	.06	TOTAL	1.00
DECALS 1.5	.71	TAX	.04	TOTAL	.75
LAPEL PIN	2.36	TAX	.14	TOTAL	2.50
TIE TAC	2.83	TAX	.17	TOTAL	3.00
PATCH	2.83	TAX	.17	TOTAL	3.00

Send Orders to: CSPRA, P. O. Box 28366, Sacramento, CA 95828

california state park rangers association

ELECTED OFFICERS

President: John Mott, 2975 Graham Hill Rd, Santa Cruz, CA 95060
 Work (408) 335-4598 Home (408) 438-6763

President Elect: Jeff Price

Directors: Joan Grammer, Rick Parmer, Dan Abeyta, Bob Grace

Treasurer: Ken Gray

APPOINTED OFFICERS

Executive Manager: Doug Bryce, P.O.Box 28366, Sacramento, CA 95828
 Home (916) 383-2530

Installations: James Whitehead

Historian: Al Salzgeber

Ways and Means: Denzil Verado

84 Convention: Broc Stenman

85 Site Selection: Cliff Wade, Doug Bryce

COMMITTEE CHAIRS

Education and Training: Steve Horvitz

Retired Members: Jor McCall

Maintenance: Larry Tierney

Legislative: Dave Vincent

Environmental Issues: Larry Santoyo

PUBLICATION EDITORS

(Monthly)

CSPRA NEWSLETTER

Mark Faull & Wendy Lieber

95 Kelly Avenue

Half Moon Bay, CA 94019

Work (415) 726-6238

Home/Mark (415) 726-2266

Home/Wendy (415) 726-9278

(Semi-annually)

CAL RANGER

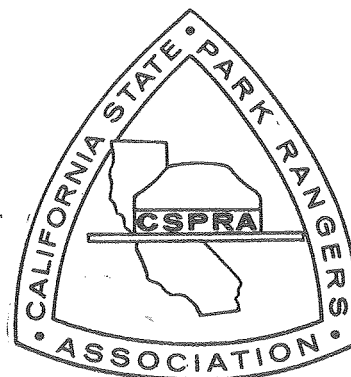
Heidi Doyle

2451 South M Street

Oxnard, CA 93033

Home (805) 483-5920

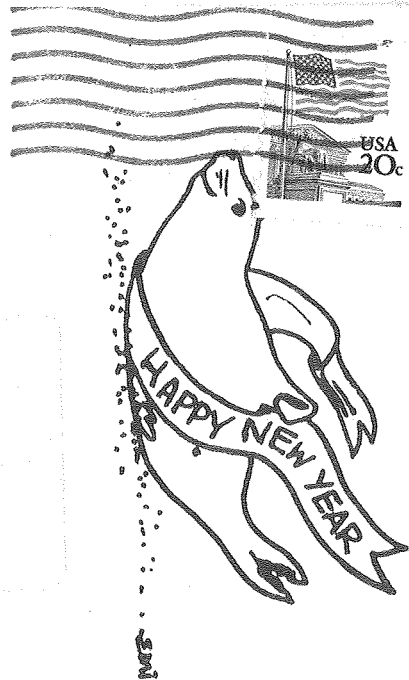
Work (805) 654-4611



california state park rangers association

NEWSLETTER

95 Kelly Ave., Half Moon Bay, CA 94019



JANUARY 1984

WM PENN MOTT
62 Ardilla Road
Orinda, CA 94563

H

ENVIRONMENTAL UPDATE CONTINUED

MARINE SANCTUARY. The proposed Monterey Bay Marine Sanctuary was pulled off the list of candidate sites by the National Ocean Atmospheric Administration (NOAA). Though there is little cost involved in Marine Sanctuary status, NOAA officials claimed the proposed sanctuary would be too expensive to manage and that California has too many other marine sanctuaries (there are two). The sanctuary would have reached from Pescadero Marsh in San Mateo County to Big Sur. Though sanctuary regulations vary, the other two California sanctuaries prohibit the development of oil and gas. Also the State Fish and Game Department has been working for several years with the Federal Government to transfer authority of marine mammals protections to the state. Recently the above mentioned F & G Director, Don Carper, suggested that the sea lion population of Monterey Bay may need some artificial thinning to cut back competition with commercial fishing. This may not have been conducive with Marine Sanctuary status. Several environmental groups are planning legal action to overturn NOAA's decision which lacked any public input. Another California candidate, the Cordell Bank, is still on NOAA's list.

