

# NEWSLETTER

CALIFORNIA STATE PARK  
RANGERS ASSOCIATION

March, 1986

In this issue:

CSPRA Board Meeting  
Cascade Ranch  
Environmental Issues Update

Sinkyone Wilderness  
More Advertising in State Parks?  
Folsom's Floating Restaurant/Bar

and MORE!

## LAST CHANCE FOR SINKYONE REDWOODS!

CSPRA, along with environmental organizations, the Department of Parks and recreation, the State Legislature and Federal Government are trying to acquire the Sally Bell Grove and surrounding land to add to the Sinkyone Wilderness Area.

The Sally Bell Grove, on California's Sinkyone Wilderness coast, is one of the most remote seaside regions on the lower 48 states. It forces California's rugged State Highway 1 to turn inland, avoiding Sally Bell's plunging cliffs and

continued on page-9

## COMMISSION OPENS DOOR TO ADVERTISING IN STATE PARKS

The State Park Commission voted unanimously to liberalize language in Policies 20 and 21 which restricted advertising and set a one inch letter height limit for donor recognition. CSPRA testified in opposition to the change.

The action came at the request of the Los Angeles County Dept. of Beaches and Harbors (DBH) which operates eleven State Beaches, including, Will Rogers SB.

During the Coppertone controversy several years ago, CSPRA worked with the Commission to establish reasonable donor recognition standards that would prevent commercial exploitation. DBH plans call for 2" x 3" advertising panels on county owned beach garbage trucks. Special commercially sponsored beach events will allow the erection of 30' high inflatable beer bottles. 4' x 6' beach bench enclosure panels will also be made available to advertisers.

DBH had also requested exemption from the General Plan process but was turned down.

## CSPRA BOARD OF DIRECTORS MEETING

The CSPRA Board of Directors met January 11, 1986 at the site of the GEC, at the Concord Holiday Inn.

Those present were:

Rick Parmer ..... President  
Mike Whitehead ..... V. President  
Gar Salzgeber ..... Director  
Doug Bryce ..... Exec. Manager  
Ken Gray ..... Treasurer  
John Mott ..... Past President  
Steve Horvitz ..... Editor

continued on page-4



## PRESIDENT'S MESSAGE

By Rick Parmer



Rick Parmer

In the December ballot survey, 89% of you responded yes to the question: Should CSPRA initiate a legislative lobby and public relations effort to increase staffing for DPR? Since becoming President in January I have devoted the lion's share of my time to preparing the groundwork for this ambitious effort.

Since 1984, Director Briner has made a sincere attempt to rectify deficiencies that reflected a ten year decline in permanent staff positions. But in the past two years we have witnessed his requests (362 in FY 84/85; 258 in 85/86) get whittled down to near nothing as they moved through the Resources Secretary, Dept. of Finance, and on to the Governor.

Again this year it is the same story. A few positions for new development and that's all.

Your Board of Directors has recently solicited up-to-date estimates on critical staffing needs at many levels within the Department. This information along with the 1985 staffing survey will form the basis of our proposed campaign.

CSPRA and the Planning and Conservation League have prepared a \$6,000 budget to convince the Legislature in budget hearings and the Governor, through media exposure and public pressure, to increase staffing by the time the budget is signed in June.

We intend to wage this campaign by hiring a communications consultant to solicit a broad base of support through constituency-building, volunteer involvement, editorial board visits, and TV coverage. CSPRA and SPPOAC have already pledged \$2500. By the time the NEWSLETTER goes to press we expect to have additional financial support from professional associations, unions, conservation organizations, and, hopefully, some business interests.

No formal coalition is being set up for the campaign. Instead, we are forming an ad hoc group called: Californians for Better State Parks. Donations will be held in a separate account through the Planning and Conservation

The NEWSLETTER is published for the members of the California State Park Rangers Association. Rick Parmer President. Submissions are invited. Send to: NEWSLETTER, P.O. Box 1701, Coarsegold CA 93614. Or call: 209-683-6855. Written and phone recorded text is accepted, the NEWSLETTER will also accept electronic data transfer. You may contact the NEWSLETTER via ECOMET. Articles of less than 1000 words are preferred.

The NEWSLETTER editorial team is:

Steve Horvitz ..... editor  
Donald Murphy ..... assisting editor  
Terri West ..... assisting editor

continued on the back page

## FLOATING RESTAURANT, BAR PROPOSED FOR FOLSOM LAKE SRA

A proposal to amend the General Plan for Lake Natoma drew heavy public testimony and press coverage before the Commission. Developer H. C. Budmeyer requested the amendment to construct a 150 unit private campground and motorized boating concession with a sixty foot floating restaurant and bar complex.

Supporters argued the need for a fully accessible campground for the disabled. Others expressed concern over the sketchy details so far provided.

Paddling and rowing organizations claim the proposal would interfere with their use of the lake.

CSPRA requested the commission and Department examine the impacts of the proposal on the intended "quiet use" concept in the initial General Plan. CSPRA also asked that they assess the use and adequacy of disabled camping facilities already in place. CSPRA will continue to monitor this proposal.

## FROM ELEPHANT SEALS TO REDWOODS

You can now walk from an elephant seal rookery up a coastal valley into a lush redwood forest, thanks to years of cooperative effort on the part of state park advocates.

A check was issued for the purchase of 3200 acres of prime coastal redwoods in the San Mateo Coast District known as Cascade Ranch. In late December the Coastal Conservancy and State Public Works Board gave final approval for the acquisition.

The Trust for Public Land was

instrumental in forging the final agreement which also mandates the private development of a lodge and campground on 300 acres under TPL control. This clause was a crucial element in fashioning a compromise between the Governor's office and environmental groups, according to Bill Dempsey, TPL field representative.

CSPRA, an active supporter of the project, learned that one of the reasons for a private campground development instead of public was the DPR position that they would be unable to staff or maintain such a facility.

CSPRA will be one of the groups involved in reviewing plans for the campground and lodge prior to final approval. If you are interested in this project please contact Doug Bryce.

## \$500,000 TO CASCADE RANCH

The Save-the-Redwoods League contributed \$500,000 toward redwoods acquisition at Cascade Ranch.

They have worked hard to see the park become a reality.

## LOS ANGELES'S BOTTLE BILL?

City Councilmen Zev Yaroslavsky, Marvin Braude and Howard Finn have introduced an ordinance to establish a Bottle Bill in the city of Los Angeles.

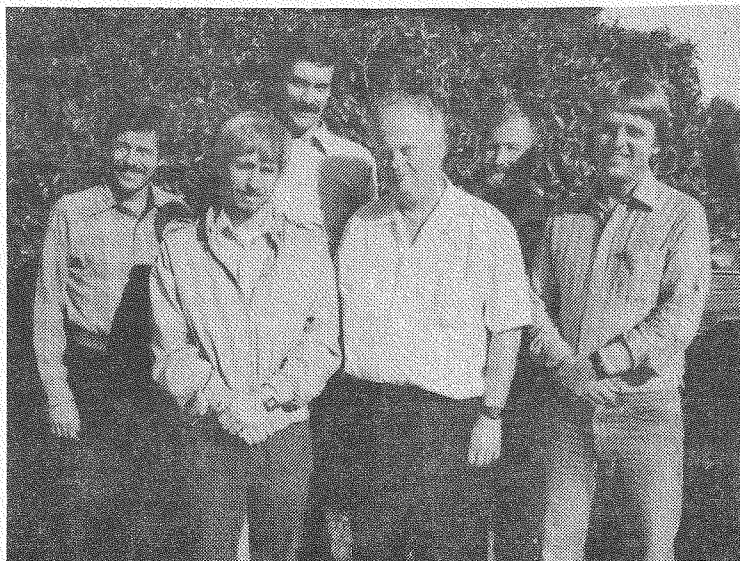
At their press conference they said that they were tired of waiting for the State Legislature to act on the Bottle Bill. They feel that Los Angeles is in desperate need of the deposit system to clean up litter and keep extra trash

continued on page-12





CSPRA BOARD OF DIRECTORS MEETING - continued from page-1



CSPRA Officers  
L to R: Mott,  
Gray, Parmer,  
Bryce,  
Salzgeber and  
Whitehead

not shown:  
Frinkie  
Nixon

Officers' Reports and Information:

Parmer Legislative:

Researched staffing and vital statistics on DPR trends for past decade. Presented testimony on need for across the board staffing increases to Assembly Parks and Wildlife Committee. San Diego Tribune extensively quoted CSPRA testimony in articles the following day. Sent correspondence on Cascade Ranch acquisition to Public Works Board, Coastal Conservancy, and Senator Rebecca Morgan. Assisted EIC Committee in preparing Sinkyone Wilderness comments for Sally Bell grove timber harvest plan. Presented leads for reporter to do a story on the issue for the Christian Science Monitor. Assisted with the presentation and leads on opposition to film industry bills affecting SP units.

Liaison:

Met with Cole Dwyer to discuss development of Maintenance Workers Assn.

Whitehead Legislative:

Researched several concerns from the membership in certain locations:

Possible communications antenna location by the County of San Diego within Palomar Mountain State Park.

Continued on page-5

Congressional bill interest regarding the deeding of mineral rights within Anza Borrego Dessert from BLM to DPR

Salzgeber Investigated the feral cattle problem in ABDSP. It appears that "political reality" prevents much action in removing cattle from park lands. Mr. VanBleck (an ex-chairman of the Cattlemens Association) states that all cattle belong to someone, therefore there is no such thing as a feral cow. Hence the destruction or removal of cattle from DPR lands is a felony. ABDSP plans to spend \$200,000 to build fencing to keep out the cattle and to relocate 40-80 cattle living within State Park boundaries.

Mott Nominations:

Submitted articles for the Newsletter and chaired a Nominations Committee meeting. Received four nominations for President, all but Parmer declined to serve if elected. Received nominations for director positions, all agreed to serve if elected.

Fahey Reward Fund:

Called Mr. Fahey in early January. The trial has not yet begun. Request the Board to reaffirm the policy of 6-6-85 maintaining the \$2,800 fund as a reward fund pending adjudication of Shawn's killer.

Gray Other than treasurer responsibilities I have held planning meetings for the CSPRA-PRAC conference.

Sent Jerry Meral information about cattle grazing at Mt. Diablo SP and proposed oil industry facilities within Gaviota SP. Met with Meral to discuss legislation. Worked with Meral and Parmer in regard to the December 5th legislative hearing on DPR. Discussed strategies for augmenting DPR staff.

Resolutions Sinkyone Wilderness 86-1 - passed unanimous.

Cascade Ranch 86-2 - passed unanimous.

Feral Cattle 86-3 - passed unanimous.

SRL Certificate of Appreciation 86-4 - passed unanimous.

AB 2020 86-5 - passed, 1 no vote.

The next CSPRA Board meeting will be 3/17/86 in Concord, after the GEC.



## FILM INDUSTRY -- ANOTHER THREAT TO STATE PARKS?

MASH, The Poseidon Adventure, Karate Kid, Magnum PI, 007, The A Team, The Jacksons, CHiPs -- what do these shows have in common? All were filmed (at least in part) in State Parks.

Remember seeing beach scenes in commercials? In the cat food spot? In "Taking a vacation from carbonation"? In a telephone company ad? In car commercials, and more? Chances are when you see a beach in the background it's Leo Carillo.

Last year film companies spent 201 days at the Santa Monica Mountains District. From minor, small staff spots to full scale productions that may bring in crews of hundreds, with 20 or 30 trucks, vans, cars, "honey wagons", motor homes, tractor trailers.

State Park personnel workup the contract, they explain the law, and give advice to the production companies. Rangers, Lifeguards, and support staff work at the location to monitor the film team, to protect the Park's resources and the company's staff.

The Department's staff is paid (through reimbursement) by the production companies, and usually work on days off drawing overtime.

Now Assemblyman Stan Statham (Redding) has introduced a bill that would remove a requirement that movie and television companies reimburse the state for use of its employees, including CHP and Rangers.

If the Statham bill passes the Department would not be able to afford to monitor the crews activities as closely as it would like.

The result may cause serious damage to Department lands.

To Statham, the bill is "one more small thing that we can do" to keep the film industry "here in California where it belongs."

Statham has amended the bill to require the Department to request more Rangers if it passes.

In a recent article by the L.A. Times, CSPRA member Michael Allan offered the following information: "Unfortunately, with the budget the way it is, the chances that these funds are available are nil".





---

CSPRA WELCOMES ITS NEW MEMBERS!

Name:

Location:

Lois Harter	Marin District
Linda Fay Fletcher	Central Coast Region
Bedelia Ann Rosales	Hungry Valley OHV
Phillip B. Jenkins	Santa Monica Mnts District
Beth Ann Wallace	Santa Monica Mnts District
Jody Borchardt	Pismo Dunes SRA
Theresa Marie Cortez	Toanga State Park
Eileen Clark	Old Town SHP
Mitzi Dean Espirite	Frontera
Howard John Deets Sr.	Frontera
Richard John Ray	Salton Sea SRA
Rondalyn R. Robinson	Channel Coast District
Michael R. Stephenson	Orange Coast District
Stephanie Clark	Orange Coast District
Jeffrey Wayn Lee	Lake Perris SRA
Barbara Ann Lauck	Crystal Cove
JoAnn Fraylor	Oxnard
Donna M. Gillett	Idyllwild
Alan Rough	San Francisco
Eric A. Knapp	Cambria
Ronald Lee Garrison	Redwood City
Michael David Allan	Inverness
Feliz Arteaga	Orangevale

For member information, fill out and send the form on page 11.

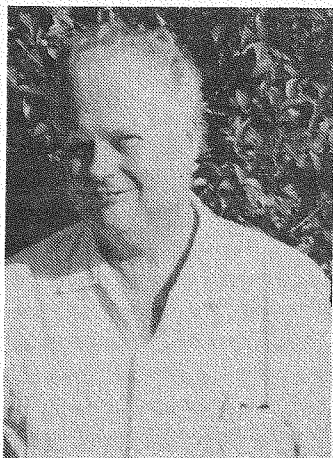
INTERPRETIVE METHODS TRAINING COURSE

The fifth session of this course has been announced by East Bay Regional Park District. The course is from May 4 to the 9th, Sunday evening through Friday afternoon. At East Bay Regional Park District in the San Francisco Bay Area. The \$400.00 fee includes lodging, all meals, transportation from lodging to the sessions, and all instruction and materials.

Contact Ron Russo, East Bay Regional Park District 11500 Skyline Blvd., Oakland, CA 94619, 415-521-6887 for more information.

1986 CONFERENCE QUALIFIES AS TRAINING

DPR's Training officer, Jim Kruger, has advised us that CSPRA's conference, Managing Resources for the Future, will qualify as DPR training. Employees should submit a DPR 392 to their supervisor. Fifty percent of the registration fee will be paid by the state. Sixteen hours of the conference qualifies as training. Employees who normally work on the days the conference is being held may attend 50 percent on state time. Refer to the training chapter of the Department training manual (figure 0303.3 and policy #6). The conference is 3/14-17, 1986.



Doug Bryce

## PROFILE OF A PARK PROFESSIONAL

by Donald Murphy

The west side of Sacramento is marked by a major port and an endless parade of trucks travel its streets. Huge warehouses are the most dominant structures of the area. You might think the area is an unlikely setting for offices of the Department of Parks and Recreation. But in one of the warehouses you will find the Office of Interpretive Services and one of the hardest working and enduring park professionals, Doug Bryce.

Born in Indio, California in 1934, Doug grew up in Southern California, the son of a California Division of Highways worker. It was during his youth that Doug first became enamored of parks. Doug went on to graduate from San Diego State University receiving a Bachelors degree in Social Sciences.

Doug joined the old Division of Beaches and Parks back in 1955 as a park aid at Cuyamaca State Park. His first permanent position came in 1957 as a park attendant at what is now Anza Borrego Dessert. He later reclassified to Ranger I and in 1960 moved on to Bolsa Chica State Beach, then fondly known to the locals as Tin Can Beach.

During the next ten years Doug promoted through the ranks while working at such places as Calaveras Big Trees, and Marshall Gold until he had gone full circle back to Anza Borrego as the Area Manager from 1968 to 1969. From 1969 to 1972 he was Assistant District Superintendent for the old District 1, now Northern Region. In 1972 he came to serve in his present position as Manager III, State Parks in the Office of Interpretive Services.

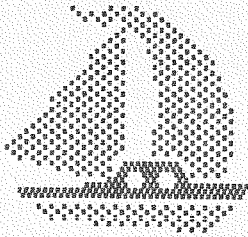
I asked Doug what had been the highlight of his career. After a moment of reflection, Doug stated that the nine months during which he was acting Chief of the Office of Interpretive Services was the highlight of his career. During that period Doug coordinated the statewide History Program, and was involved in the opening of the State Railroad Museum. In his current position he is responsible for special programs, budget preparation, interpretive publications and the audio/visual section.

With all of the career success Doug has attained within the State Park System, he has not stopped there. Any true professional has a responsibility to edify his profession, to give something back. For the past 18 years, since 1968, he has served as the Executive Manager for CSPRA. I asked Doug why CSPRA formed as a professional organization. He laughed a little and said that Rangers wearing period dress was the issue that sparked the formation of CSPRA. He recalled how staunchly opposed many managers were to Rangers wearing period dress while on duty.

continued on page-10



# MILLERTON LAKE BOAT SHOW OR:



# "BEER, BROADS AND BIKINIS?"

Gar Salzgeber

On a May weekend there's a "Boat Show" at Millerton Lake. Though there are only a few boats on display, there is a commercial beer wagon, a bikini contest, a rock concert, and country western show. The crowd, large and unruly, is often frequented by bikers.

The bikini contest occurs the second day along with the country concert. Some of the ladies, afraid of loosing, stack the deck and flash slightly more than what they would normally show. A real crowd pleaser, eliciting a beer salute from the audience.

Most people attend only for the party atmosphere of the event.

This combination of events can only have a deteriorating future. Last year law enforcement made 50 arrests, most for alcohol related crimes: Drunk, DUI, fighting, etc. The CHP picked off 30 more duces immediately outside the park.

It's hard to condemn the entire weekend for events that may be entirely appropriate for a State Recreation Area. However, I am concerned about the Rangers' difficulty to keep the events controlled within reasonable bounds. The catalyst for control or loss of control appears to be the commercial beer wagon.

The combination of warm May weather at Millerton and the crowd psychology seems to escalate the amount of beer consumed creating a loss of audience control. I believe that as a Department we should not allow alcoholic concessions in State Parks, particularly in the days of MADD. We should strongly encourage sales of nonalcoholic drinks in our units.

SINKYONE - continued from page-1

pounding surf.

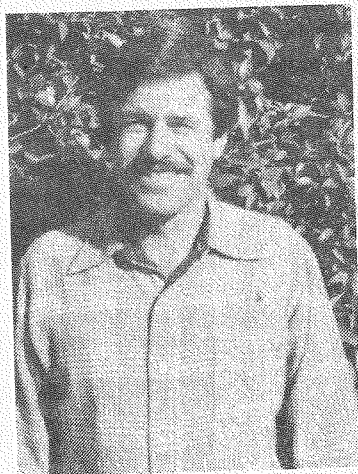
Georgia Pacific has agreed to postpone clearcutting the grove until April 1. This will give concerned groups time to raise funds to purchase the grove and the surrounding 6,900 acres. Once inhabited by the Sinkyone Indians.

Governor Deukmejian vetoed the Legislature's appropriation for this land. Hence, it is vitally important that you alert the Governor and your legislator of your feelings about state purchase of this pristine land immediately. There is little time...



## BOTTLE BILL PASSES THE ASSEMBLY

By John Mott



John Mott

The Californians Against Waste and beverage industry groups have compromised on a statewide "bottle bill" which will end a 20 year battle over beverage bottle and can deposits.

Under AB 2020, which passed the Assembly last January, a penny will be added to the store price of most beverages sold in aluminum, glass and plastic bottles and cans. The consumer could get at least that penny back by returning the container to a recycling center.

The compromise was negotiated when it became apparent that AB 2020 did not have enough votes for passage. Although far from ideal, the one cent deposit does represent an important "foot in the door" for deposit legislation.

AB 2020 is now moving through the State Senate. Chances for passage are very good. The main question now is not if AB 2020 will be enacted, but what amendments will be made before the Governor signs the bill.

BRYCE-continued from page-8

Doug became a charter member of CSPRA and continues to be involved in the professional concerns of

all employees.

Doug's contributions to the parks and recreation profession do not end here. He has been the executive manager of WIA since 1979 and a member of the Audubon Society, and the Sierra Club. I asked Doug if he has plans for the future, "Well, I plan to retire in 1988, continue to manage CSPRA and maybe WIA. I'd like to travel the eastern United States and Canada. I've never been to Alaska. I really want to make that trip and Hawaii, too."

Doug did not want to be quoted on the negative aspect of his professional career, however he did say that at times he felt like a "wounded idealist." He went on to say that decisions are sometimes made for the wrong reasons. That getting as much money as you can seems to be the motivation for some. Finally I asked him what constitutes a park professional? He said, "Caring about the people you serve."

Doug's 29 years as a park professional has served as an inspiration to all of us whose lives he has contributed to. On behalf of CSPRA, and park professionals everywhere thank-you Doug, for your many contributions to the profession.

### EDITOR'S NOTES

With this article, the NEWSLETTER begins a feature on the "profile of a park professional." Mini biographies will highlight the lives of people who have made an impact on our profession.

If you have suggestions of candidates for this feature please write Donald Murphy, c/o Plumas Eureka SP.

OFFICERS		
<b>PRESIDENT</b> Rick Farmer P.O. Box 34040 San Francisco CA 94134 work (415) 557-4069 home (415) 822-7220	<b>VICE PRESIDENT</b> Michael Whitehead P.O. Box 3639 Idyllwild CA 92349 work (714) 659-2607 home (714) 659-4478	<b>DIRECTOR</b> Tom Nixon Clear Lake District 5300 Soda Bay Road Kelseyville CA 95451 work (707) 279-4293
<b>DIRECTOR</b> M. M. Frincke 16290 Brookdale Drive Carmel CA 93923 home (408) 624-0537	<b>DIRECTOR</b> Gar Salzgeber 861 Merced Pismo Beach CA 93449 work (805) 549-3343 home (805) 773-3703	<b>TREASURER</b> Kenneth L. Gray 69 Water Glen Crcl. Sacramento CA 95826 work (916) 324-1828 home (916) 386-0527
<b>EXECUTIVE MANAGER</b> Doug Bryce P.O. Box 28366 Sacramento CA 95828 home (916) 381-4620	<b>INSTALLATIONS</b> Denzil Verardo 10899 Palm Street Castroville CA 95012 work (408) 649-2954 home (408) 633-2726	<b>HISTORIAN</b> Al Salzgeber 5511 Calle Arena Carpenteria CA 93013 home (805) 684-4700
<b>WAYS &amp; MEANS</b> Jeff Price	<b>NOMINATIONS/HON. MEMBERS</b> John Mott 120-A Christal Oaks Dr. Scotts Valley CA 95066 work (408) 333-4598 home (408) 438-6763	<b>EDUCATION/TRAINING</b> Fred Joe P.O. Box 483 Borrego Springs Ca work (619) 767-3311 home (619) 767-3674
<b>RETIRED MEMBERS</b> Joe McCall 19028 Talisman Dr. Sacramento CA 95826 home (916) 363-7566	<b>SPPDAC INTERPRETIVE</b> Donna Pozzi 300 23rd St. Sacramento CA 95816 work (209) 948-7782 home (916) 443-3559	<b>ENVIRONMENTAL ISSUES</b> Gar Salzgeber
<b>JR. PAST PRESIDENT</b> Jeff Price 318 Center Lane Santa Paula CA 93060 work (805) 654-4611 home (805) 525-0807	<b>NEWSLETTER</b> Steve Horvitz P.O. Box 1701 Coarsegold CA 93614 work (209) 822-2332 home (209) 683-6855	

CSPRA INFORMATION	
for more information, please check the appropriate:	
<input type="checkbox"/>	New member information.
<input type="checkbox"/>	Retired member form.
<input type="checkbox"/>	Education and Training scholarship application.
<input type="checkbox"/>	CSPRA benefits.
<input type="checkbox"/>	CSPRA sale items.
clip and mail this form to: CSPRA's Executive Manager, Doug Bryce, P.O. Box 28366, Sacramento CA 95828	
name: _____	
address: _____	

CSPRA is a tax exempt corporation.

For change of address, please contact Doug Bryce at CSPRA's Sacramento Office.

Comments on NEWSLETTER articles or editorials are welcome at the NEWSLETTER address.

Some articles or editorials may have been edited by the NEWSLETTER editorial team.

## GOVERNOR DEUKMEJIAN RECEIVES A C- FROM PCL

The Planning and Conservation League Foundation has published a "report card" on Governor Deukmejian.

Overall grade is a C- Below is his rating:

Topics	Legis.	Budget	Policy	Appoint.	Overall
Air Quality .....	B	B	C+	B-	B-
CEQA .....	D+	*	C+	*	D+
Coastal .....	D-	F+	F	*	F+
Energy .....	C+	B-	B	B+	B
Fish and Wildlife ....	B-	C+	C+	*	C+
Forestry .....	F+	D-	F	*	F+
Lake Tahoe .....	C	B	F+	*	D
Mining and Resources.	*	F+	F+	C-	D-
Parks .....	C-	F+	C-	*	D+
Pesticides .....	C-	C+	D	*	C-
Toxics .....	B-	C	D	*	C
Transportation .....	C-	D-	D	*	D
Water .....	D+	B-	C+	C-	C

\* indicates lack of sufficient evidence to give a grade.





CALIFORNIA STATE PARK RANGERS ASSOCIATION

Sacramento Office: P.O. Box 28366, Sacramento CA 95828

mail to:

-----  
L. A. BOTTLE BILL - continued from page-3

out of the city's rapidly filling  
land fills.

soft drink containers sold in Los  
Angeles.

Eight votes of the fifteen member  
council are needed to pass the  
ordinance, which would establish  
a nickel deposit on all beer and

This announcement has added to the  
monemtum to pass a statewide bot-  
tle bill through Assembly Bill  
2020 at the start of 1986.

PRESIDENT - from page-2

League 909 12th St. Suite 203, Sacramento, CA 95814. Checks should be  
made to: PCL-Californians for Better State Parks.

Your help as individual CSPRA members is essential to our success. To  
volunteer contact Doug Bryce.

You may also be interested to know that the Reagan administration has  
proposed a 20% budget cut for the National Park Service. Director  
William Penn Mott Jr. has received extensive and favorable national  
press coverage in his bid to secure additional funding for the NPS. Ac-  
cording to a recent New York Times article, "Mr. Mott intends to press  
for an expanded, secure park system because, he contends, the nation  
requires it."

"I SAW IT IN THE MANUAL ..."

from the Division of Beaches and Parks field manual, 1947

"All State Park employees are entitled to one day off per week and all  
legal holidays. ... Except that during the period from May 1 to Septe-  
mber 30, the regular day off must not be Saturday or Sunday, nor legal  
holidays."

DPR 1947 Salaries (per month):

District Park Superintendent .....	\$395 to 481
State Park Ranger Grade III (chief Ranger) .....	\$295 to 358
State Park Ranger Grade II (asst. Ranger) .....	\$255 to 310
State Park Ranger Grade I (deputy Ranger) .....	\$210 to 255