

# NEWSLETTER

California State Park Rangers Association

Volume VI Number 83

August 1997

## End of the Road for SAVE BODIE! Committee !

by Donna Pozzi

Our work at Bodie is done. While Bodie won't ever really be saved, the immediate threat from open-pit gold mining has subsided. It's time to pause and ponder our amazing achievement, to celebrate, and to move on to the next challenge to the integrity of the State Park System.

What has finally happened is that the federal Bodie Protection Act has been implemented and acquisition of key lands has been completed. This may be a surprise to you because this has all occurred rather quietly. SAVE BODIE! has been relatively dormant since there wasn't anything we needed to do; the appropriate government agencies have been working to ensure Bodie's preservation.

As you may remember, our position all along has been that we would act only when necessary. Back in 1988, had the Department of Parks and Recreation been allowed to take a position to protect Bodie, CSPRA's SAVE BODIE! Committee would never have been formed. We reluctantly stepped forward to fill a void. While I'd like to think "the rest is history" and well known to all readers, it bears repeating. I'd like to remind today's CSPRA board and membership of what we've been capable of in the past and hope this serves as an inspiration for the challenges ahead.

(Continued on page 7)

### CSPRA Online What's Your Opinion?

The CSPRA Board is asking for your opinion and comment on providing a new membership service. At the July 25th Board meeting, CSPRA Director Dave Collins presented a proposal which would establish an Internet presence for the Association through a CSPRA website. The proposal comes with volunteers to do all the work and a cost of

(Continued on page 6)

### Committee On Nominations Meeting This Fall

The CSPRA Committee on Nominations will hold an open meeting in October at the Mott Training Center. The Committee is actively seeking candidates interested in running for two replacement positions on the Board of Directors and the Officer

(Continued on page 6)

### On The Inside

President's Message	2
Park Bond Act	3
Trail Training	3
Humor in ...	4
Stress in the Park Family	5
Capitol Corner	5
Only a Little Planet	6
Gholson & Philbrook Pass	10
Annual Financial Statement	11
Retired Member	12
Retiree's Notes	14

The Newsletter  
(ISSN 0887-9176) is  
published by  
CSPRA,  
P.O. Box 292010,  
Sacramento, CA  
95829.

Articles are  
welcome, 1000  
words or less. All  
submissions  
become the  
property of CSPRA  
and may be edited  
without notice.

## Presidents Message

by Scott Nakaji

The political process is very interesting . I have never considered myself to be very politically astute, and believe me, there are times when I hear CSPRA Lobbying Consultant Cliff Berg talk politics, and it goes right over my head. Luckily Cliff is a patient man, and he always takes the time to translate what was said into layman's terms.

CSPRA is now establishing a presence in the halls of the State Capitol, something we've never had before.

That said, I must also say that along with all the things CSPRA does, we belong in the political arena. Everyone else out there, especially schools and prisons, have powerful well organized lobbies, while there is generally nobody to speak up for parks. CSPRA is now establishing a presence in the halls of the State Capitol, something we've never had before.

The 1998 elections are looming, and there are several resource related proposals on the table. CSPRA has opposed Senate Bill 87, donation of land for tax credits, for a variety of reasons, mainly that it profits big business and could have adverse effects on parks. Planning and Conservation League has a proposed initiative on the table that ties SB 87 to Tideland Oil revenues that may provide DPR with some funding, but only for special projects, not infrastructure and deferred maintenance.

With CSPRA taking a lead role, members can expect to be contacted and asked to contribute.

That brings us to Senate Bill 2 (Thompson). SB 2 is the proposed 1998 Park Bond Act that would provide \$125 million to DPR for infrastructure and deferred maintenance. It's not a fix all, but it's a start. Unfortunately, it may not make it onto the ballot unless we can generate support and raise the awareness of legislators.

We all have a personal stake in the health of the State Park System. CSPRA is taking a lead role in exposing legislators to the importance of State Parks and the problems that we face. I want everyone to remember that CSPRA is made up of 500 or so active and retired employees of the State Park System, not seven board members and a lobbying consultant. As I stated when I assumed the presidency, I believe that communication is the key. With CSPRA taking a lead role, members can expect to be contacted and asked to contribute.

Let's take some pride in who we are and what we do. We can make it work!

## California State Park Rangers Association

### Who we are . . .

The California State Park Rangers Association (CSPRA) has been dedicated to protecting and preserving features of the California State Park System for more than three decades. CSPRA actively promotes advancement of the ideals and philosophy for which state parks were founded.

### What we do . . .

- \*Provide professional exchange of thought
- \*Defend State Park System integrity
- \*Support quality Department efforts
- \*Comment on park uses

The Professional organization that cares about protecting and preserving the values of the State Park System.

For more information about CSPRA and how you can become a member write:

**CSPRA**

**P.O. Box 292010**

**Sacramento, CA 95829-2010**

## SB 2 Park Bond Act

This letter was recently written to several key legislators, and was hand delivered to their offices by Cliff Berg along with complimentary copies of Mike Lynch's book "The History of the State Park Ranger."

July 11, 1997

The Honorable Cruz Bustamante  
California State Assembly  
P.O. Box 942849  
Sacramento, CA 94249-0001

Dear Speaker Bustamante,

The California State Park Rangers Association (CSPRA) is a professional organization representing over five hundred employees of the California Department of Parks and Recreation.

CSPRA urges you to move Senate Bill 2 (Thompson) through appropriations. The last bond act affecting parks and wildlife resources was passed in 1988, and funds generated from that bond act are close to depletion. There is a critical need in California's State Parks for deferred maintenance and the rehabilitation of existing facilities.

The California State Park System is the most diverse state park system in the world. It serves the needs of over 70 million visitors each year, and California State Park employees are responsible, according to the department's mission statement, "to provide for the health, education and inspiration of the people of California." Each year, throughout California, the State Park System's 264 units provide programs designed for the education of schoolchildren, safety and enjoyment of recreationalists and protection of the state's most treasured resources for the enjoyment of future generations.

For years, the lack of a stable funding source has led to an estimated \$500 million backlog of deferred maintenance and capitol outlay needs within the State Park

System. The passage of SB 2 through appropriations is the first step toward filling this need.

Thank you for your consideration.

Sincerely,

Scott S. Nakaji  
President

cc: Senators: Lockyer, President Pro Tempore; Hayden; Johnston; and Thompson.  
Assembly Members: Keely and Machado

### Comprehensive Trail Construction and Maintenance Training by Nick Franco

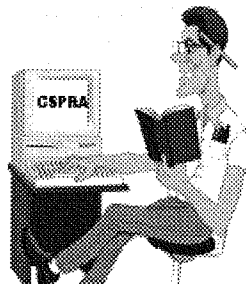
Until recently, comprehensive trail construction and maintenance training has not been available in California. Most agency personnel and volunteers have had to learn on the job in a hit and miss fashion. California State Parks decided to take the initiative and develop a program for its employees. The program involves three weeks of training scheduled a week at a time over about a year and a half. The first training group has completed its training. One National Park Service and two Monterey Peninsula Regional Park District employees joined 20 graduates from CA State Parks.

Graduates were enthusiastic in evaluating the program. One long time, CA State Parks employee said it was the best training he had been to in 32 years with the Department. A National Park Service employee stated "The quality of training and professionalism displayed . . . exceeds that of any formal training I've experienced in my career." A graduate from Monterey Peninsula Regional Park District commented "Nothing that I have witnessed compares to the extent of knowledge that is being opened to this class by our state's best trail professionals. The instructors maintain a caliber of excellence that any trail enthusiast strives for. The instructors maintain a caliber of excellence that any trail enthusiast strives for. They are the best in the field. (Continued on page 4)

One long time, CA State Parks employee said it was the best training he had been to in 32 years with the Department.

# HUMOR IN UNICORN

by Jeff Price



I am very honored to join Walt Disney, whom I knew, and previous recipients!

*A family relay affair?*

"He's not here right now, but I'll relate him your message."

*Investor advice; remain liquid*

"He spends money like a fish."

*A field situation.*

"We're losing focus and getting too far astream."

*Cognition.*

"Don't worry about him, he's just a small link in a big wheel."

*It could happen, but not likely*

"... so the property isn't contingent to our boundary."

*Wheat and sodium diet?*

"Don't pay any attention to his comment, you just have to take it with grain and salt."

*Selfless tweakster, ain't he?*

"It was my opportunity to honk your horn."

*... or even a modest auto-digital rhythm.*

"I don't want to beat my own horn, but ..."

I can attest to their ability to find a solution to any trail situation."

## Letters

Ms Mary Wright  
Chair, Nominating Committee

Dear Mary:

I want to thank you, along with Susan Smartt and Karen Wilson, for the CSPRA recognition of becoming an Honorary California State Park Ranger. I will wear my hat proudly when I visit State Parks in the future — as I've worn a NPS Honorary Ranger hat to National Parks!

I am very honored to join Walt Disney, whom I knew, and previous recipients!

Thank you again!

Very sincerely,

Bill  
L.W. "Bill" Lane, Jr.A.O.

## Trail Training (Continued from page 3)

If you have a trail dilemma, this class will give you numerous options to choose from. I can attest to their ability to find a solution to any trail situation."



CA State Parks will be offering the program again with the first week of class starting in February of 1998. Due to a high level of interest by other agencies and individuals, California State Parks will be opening the training to anyone interested. We expect about 15-20 slots to be open to non-CA State Park employees. Costs are expected to be about \$900 per week including room and board. Interested parties may gain additional information by calling Steve Waggy at the William Penn Mott, Jr. Training Center at (408) 649-2959 or at <http://www.mbay.net/~dprmtc/>.

## Stress in the Park Family

by Nick Franco

Over the past few years we have been tenuously clinging to the notion of the park family. I hear many comments that this park family doesn't exist anymore or that it is at best a dysfunctional family. Like most families, we have ups and downs in the way we view our relationships to one another. The reasons families break up or become dysfunctional are many. One of the main causes of stress in families is money and the different priorities that each family member has.

I believe that this has become one of the major stresses in the our family today. We are fighting over limited resources, both money and personnel. We cannot let these differences in priorities or competition for limited resources diminish our long term perspective of achieving our overall mission. Sometimes we will loose some of our allowance money to help pay for our sister's braces or our brother's new shoes. Later down the road, the family is better off even though we may have had to make sacrifices. We must remember that we all are working towards the same goals. Greet the other members of our family with respect and understanding. Don't let money worries hurt our family. And most importantly, keep everyone informed. Maintenance needs to let visitor services know what projects they are planning and visitor services needs to let maintenance know about special events and visitor needs. While money is one of the main stresses in the breakup of families, communication is the key to creating healthy families. Let's keep our communication open and make sure that we don't lose our state park family.

## Capitol Corner

by Jill Dampier

The State's budget has been the topic of discussion in the Legislature and Capitol recently. Our Legislative Consultant, Cliff Berg, and Senator Mike Thompson were in-

strumental in removing a provision in the Governor's proposed budget for CA State Parks that proposed DPR raise \$585,000 by charging school group fees. These moneys were to help reduce \$1 million from our current General Fund appropriation, and increase revenues by a like amount. The provision was removed and the moneys will come from the general fund (for now).

SB 2 (Thompson) Park and Resources Improvement Bond Act is still in suspension in the Appropriations Committee with all other bonds. Rumor has it that all bills pertaining to bonds may be held until January because of the length of time it's taking to get the State's budget passed. CSPRA Board Members are still working on getting a good data base of information together about parks and making contacts with other organizations to form a coordinated grassroots campaign for supporting SB 2 and ultimately the passage of the bond.

The Planning and Conservation League (PCL) is sponsoring an initiative, California Heritage Endowment Act, that incorporates SB 87 (O'Connell) with Tidelands Oil Drilling Revenues to create a funding source for specific projects and programs. SB 87 gives state tax credits to landowners that donate land to state and local agencies for environmental purposes. Our position on this initiative has not been finalized. We feel that SB 2 should be our primary issue because it addresses our most pressing needs; i.e., funds for rehabilitation of facilities and infrastructure. Moneys available through this initiative would be limited in amount and scope. We will keep you posted.

Please write letters of support for SB 2 to the following individuals. It is important for them to know that there is support for the bill and, ultimately for the bond. Please "cc" a copy of the letter to Senator Thompson:

Honorable Bill Lockyer  
Senate President pro Tempore  
P.O. Box 942848  
Sacramento, CA 94248-0001

Honorable Pat Johnston, Chair  
Appropriations Committee  
P.O. Box 942848  
Sacramento, CA 94248-0001  
(Continued on page 6)

**We are fighting over limited resources, both money and personnel.**

We feel that SB 2 should be our primary issue because it addresses our most pressing needs; i.e., funds for rehabilitation of facilities and infrastructure.

---

## Capitol Corner

(Continued from page 5)

---

Honorable Cruz Bustamante  
Speaker of the Assembly  
P.O. Box 942849  
Sacramento, CA 94248-0001

Honorable Curt Pringle  
Republican Floor Leader  
P.O. Box 942849  
Sacramento, CA 94248-0001

Honorable Mike Thompson  
P.O. Box 942848  
Sacramento, CA 9428-0001

---

## CSPRA Online

(Continued from page 1)

---

"How many members would be served by a CSPRA website on the Internet and would it be used?"

between \$5 and \$20 a month for an Internet Service Provider.

One consideration in making a determination is answering the question, "How many members would be served by a CSPRA website on the Internet and would it be used?"

Please send an e-Mail reply now, answering the following two questions:

1. Do you have Internet access?
2. Do you have an interest in seeing CSPRA establish a website for providing organizational and membership information?

Reply to: [cspra\\_online@hotmail.com](mailto:cspra_online@hotmail.com)

---

## Nominations

(Continued from page 1)

---

position of President-elect. Each is a two-year term.

Attending the Nominations meeting is not required to have a member's name placed in consideration, providing a written statement of intent is given to the Committee. You may submit nominations by

mail or electronically <[cspra\\_nomination@hotmail.com](mailto:cspra_nomination@hotmail.com)> any time prior to the October meeting, followed by the nominee's written statement of consent to serve, if elected. Any Active or Active Retired member is eligible to hold any elected office.

Please contact Joanne Kerbavaz, Jonathon Williams or Dave Nelson if you have questions prior to the October meeting. The time and location of the meeting will be set next month and members notified. This an excellent opportunity to get involved in directing the professional interests of public employees dedicated to the highest principles of public service.

## Only A Little Planet

The planet you're standing on  
looking out at the stars  
is the earth, the third planet from the sun

and the mildest  
and softest  
of the nine . . .

If you can stop, and let, yourself look,  
let your eyes do  
what they do best,  
stop  
and let yourself see and see  
that everything is doing things  
to you  
as you do things to everything.

Then you know  
that although it is only a little planet  
it is hugely beautiful  
and surely the finest place in the world  
to be.

So watch it, look at it  
see what it's like  
to walk around on it.

It's small but it's beautiful  
it's small but it's fine  
like a rainbow,

like a bubble.

by Lawrence Collins from The Earth Speaks



## Bodie (Continued from page 1)

### What did we accomplish and how did we do it?

Here is a list of some of the highlights. SAVE BODIE! :

- Articulated the threat to the historic ghost town and created a national issue;
- Mobilized an army of CSPRA members, environmentalists, preservationists, park visitors, school kids, friends, and family;
- Developed expertise in hard rock mining technology, mining law, and environmental impact analysis;
- Created the SAVE BODIE! News and sent it regularly to thousands of supporters;
- Participated in local and regional planning forums to express concern over Bodie's future;
- Generated thousands of letters to

officials and decision makers detailing the concerns for Bodie's fragile historic, cultural, biological and wilderness values;

- Developed a strong coalition of national and statewide environmental, historic preservation and mining law reform organizations;
  - Lobbied at all levels of government with the pro bono help of several top-notch firms;
  - Testified in the California Legislature and U.S. Congress;
  - Established relationships with legislators in California and Washington, DC;
  - Succeeded in the passage of a California Senate Joint Resolution, two bills in the House of Representatives and one in the U.S. Senate;
  - Wrote and received grants as well as in-kind contributions from writers, photographers, artists, computer experts, accountants, historians, and biologists;
  - Received hundreds of thousands of dollars worth of pro bono legal assistance;
- (Continued on page 8)

-Established relationships with legislators in California and Washington, DC;



-Succeeded in the passage of a California Senate Joint Resolution, two bills in the House of Representatives and one in the U.S. Senate;

## Bodie (Continued from page 7)

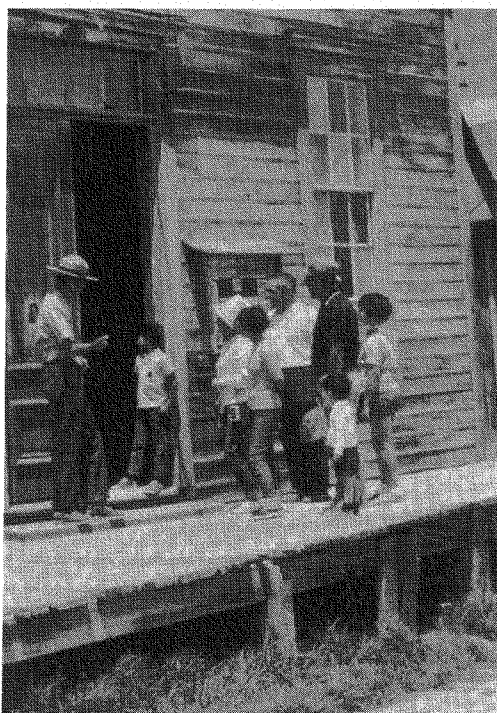
-Conducted a major fund-raising campaign generating \$50,000;

-Conducted a major fund-raising campaign generating \$50,000;  
-Appeared before editorial boards and garnered supportive editorials in the major newspapers in the state;  
-Received television, radio and newspaper coverage throughout California and across the country;

-Served on national committees to gain understanding and support for Bodie's threat;

-Created a reputation for CSPRA as an effective and influential force.

It's a pretty impressive list and I'm sure I've omitted something.



In June, escrow closed on a major acquisition that will double the size of Bodie State Historic Park.

My personal list complements the above:

-Mobilized all CSPRA board members to get involved;  
-Recruited the brightest, most talented people I know to join the SAVE BODIE! Committee;  
-Got everyone I know to write letters, stuff envelopes, give money, and/or buy SAVE BODIE! t-shirts;  
-Gave SAVE BODIE! t-shirts for all

gift-giving occasions to everyone I know;  
-Filled one room in my house with the infamous "Bodie boxes" full of files, news clippings, videotapes, correspondence, supplies, newsletters, reports, etc.;  
-Spent my 40th birthday alone in Washington, DC;  
-Developed new friendships with Bodie lovers all over the world;  
-Deepened old friendships as everyone I know always lent a hand when asked;  
-Learned to believe we really can change the world!

All in all, a life-enriching experience. I'll always be grateful for having the opportunity to lead this crusade and for all who contributed so much to such a worthy cause.

## New Acquisition Protects Bodie

In June, escrow closed on a major acquisition that will double the size of Bodie State Historic Park. As with everything involving mining claims and bankruptcies, it's complicated. The property being acquired includes the hillside behind the ghost town which had been threatened by open-pit mining. With the bankruptcy of the Canadian mining company Galactic Resources, Ltd., it became possible to purchase their holdings from the bankruptcy trustee.

The acquisition by State Parks includes 60% of mineral interests in the 520-acre parcel. The remaining 40% of the mineral rights has been purchased by the American Land Conservancy. The Bureau of Land Management, which owns the surface lands surrounding the park, is hoping to acquire those mineral rights. They are seeking more than \$2 million in federal Land and Water Conservation funds in the upcoming budget for this purchase.

What this means is that the patented claims adjacent to the park will now become part of the park. The more recent mining claims on the public lands will be returned to public use and closed from future mining claims.

(Continued on page 9)



## Bodie

(Continued from page 8)

The park will increase in size from 495 to 1,015 acres.

The park will celebrate its 35th anniversary in September with a rededication that will bring this most recent chapter in Bodie's colorful history to a close. Now Bodie lovers can continue to pursue the challenge of saving the ghost town from the elements, from the pressures of tourism, and from inappropriate commercial ventures.

### Ghosts for Bodie

When I try to imagine the upcoming September event, I'm reminded of the painting in the California State Railroad Museum depicting the ceremonial pounding of the golden spike at Promontory. Individuals are shown in the painting who weren't present for the actual event. Theodore Judah, for example, didn't live to see the railroad completed. In the case of Bodie, there are some people who won't be there—except in spirit. They deserve special mention.

**Bill Monaghan** was the regional director at Inland Region when Galactic Resources first appeared on the scene. Despite the fact that the department was unable to take official and definitive action on Bodie's behalf, Bill never wavered in his personal commitment. His confidence in me was a strong motivating factor in my decision to take on this overwhelming fight. When we were trying to make a decision about changing CSPRA lawyers, he took a day of vacation to participate in an important meeting. His willingness to take risks and his dedication to doing "the right thing" will always inspire me. Thanks, Bill.

**Bill Mott** was still director of the National Park Service when the Bodie threat erupted. He provided access to top NPS staff. When he came to work at the Western Region office in San Francisco, he continued to be extremely helpful, to the consternation of the staff. He never let turf or technicali-

ties get in the way; he too believed in doing "the right thing." He even helped us with our fund-raising. Also, he helped me prepare for my congressional testimony by faxing me some information about the government's position. He cared deeply about Bodie. Thanks, Bill.

**My mother** never got to go to Bodie but that didn't stop her from writing letters to elected officials, convincing others to write, running a one-woman clipping service, and donating money whenever we were desperate. She was a very strong and determined individual. Being a naturalized citizen made her really appreciate our democratic system. A mother's support is one of the most empowering forces imaginable. Thanks, Mom.

**There were others.** Former State Park and Recreation Commissioner John Whitehead wasn't fooled by Galactic's tactics. Wallace Stegner let us use his name on our letterhead. So did former State Senator Peter Behr. And then there's Michael O'Rourke. He worked for Galactic as a security guard for a while. I don't think he ever believed they would succeed in mining. Shortly before his death, he called me one night to discuss the plans for an excursion train on the old railroad right-of-way above Bodie. He never stopped caring about the special place he loved. Thank you all.

### Former CSPRA Attorney in National Spotlight

Did you follow all the media coverage about the recent Tahoe Summitt? If you did, you undoubtedly saw Rochelle Nason, the executive director of the League to Save Lake Tahoe. She was on network and local news, in the newspaper, as well as a public television piece.

Some of you may remember Rochelle as one of our attorneys from the firm of Morrison & Foerster. She helped us with SAVE BODIE! for several crucial years before moving on to her position with the League. Way to go, Rochelle!

**My mother never got to go to Bodie but that didn't stop her from writing letters to elected officials, convincing others to write, running a one-woman clipping service, and donating money whenever we were desperate. ... Thanks, Mom.**

## Photos of Concord Cal Ranger Conference



Upper Left: New Board: Dave Collins, Jill Dampier, Scott Nakaji, Nick Franco, Jeff Price, Joanne Kerbavaz, Dave Nelson, Susan Grove. Upper Right: Doug Bryce, Larry Ferri, Carol Nelson, Lower Left: Mike Lynch. Lower Right: Bud Getty, Paula Jones, Jacqueline Ball, Dorene Clement.

### 1998 Cal Ranger Conference

Mike Curry announces that planning is about to begin for the 1998 conference in San Luis Obispo. Please send suggestion for speakers and workshop subjects to:

Mike Curry  
La Purisima Mission  
2295 Purisima Rd  
Lompoc, CA 93436  
(805) 733-3713

### Alan D. "Tiny" Philbrook May 7, 1919 - April 3, 1997

Funeral services were held, Monday April 7, 1997, in Turlock, California with internment at Turlock Memorial Park.

Tiny began his career with the California State Park System in February 1947, at San Clemente State Beach as a State Park Ranger I. After 2 years he promoted to State Park Ranger II at Cuyamaca Rancho State Park and served there until 1951 when he was transferred to Petaluma Adobe State Historical Monument.

Tiny promoted to State Park Ranger III, Park supervisor, at Mt. Diablo State Park and in July 1956 promoted to State Park Ranger IV and assigned to Big Basin and Henry Cowell Redwoods State Parks as the first "Area Manager."

Tiny was promoted, June 1957, to State Park Ranger V, Assistant District Superintendent, at District 6 in San Clemente and in 1959 he was promoted to State Park Ranger VI, District Superintendent, District.

In March of 1963 Tiny transferred to the District Superintendent position in Eureka, where he remained until his retirement in 1979.

During his State Park career, Tiny gained a reputation for his accomplishments as well as his ability to help others to meet their potentials as Park Employees, providers of Public Service and as members of a unique extended family, "The Park Family."

Uniformed and non-uniformed employee representatives of the California State Park System, from Calaveras and Four Rivers Districts, served as Bearers.

Tiny is survived by his wife of 54 years, Marie, daughter Sally, son Bob and adopted daughter Farah and 5 grandchildren and 2 great-grandchildren.

Marie resides in Twain Harte and may be reached at; Marie Philbrook, P.O. Box 581, Twain Harte, CA 95383.

### CSPRA Income & Expenditures 1996/97

Balance 7/1/96 \$14,877.65

#### Income

Dues	34,122.00
Interest	40.42
Sales	342.78
Workshop-Trng	2,170.00
Donation	50.00
IRF Scholarship Donations	1,200.00
<b>Total Income</b>	<b>\$37,925.20</b>

#### Expenses

Awards & Recognition	1,077.21
Bank Charges	24.50
Collect Dues	1,085.24
History	480.00
Lobbyist	6,046.88
Copy-Print	43.78
Equipment Repair	493.72
Image	1,623.91
Membership Dues	2,841.00
Mgmt Srvcs	4,800.00
Newsletter	9,926.99
Officers & Bd Mtgs	6,017.42
Office	2,374.35
Phone	604.88
Postage	525.25
Recruitment	120.00
Refund to NTHP	2,000.00
Ret Rendezvous	435.72
Sales Materials	1,182.78
Scholarships	800.00
IRF Scholarship	1,500.00
Site Selection	209.87
Taxes & Fees	31.00
Travel	19.80
Workshop-Trng	1,591.54
<b>Total Expenses</b>	<b>\$45,855.84</b>

Balance on hand 6/30/97 \$6,947.01

### Roy Gholson Passes

Roy Gholson passed away on April 8, 1997 from cancer. He was 74. Roy worked as a State park Ranger from 1948 through 1980. In retirement he enjoyed observing nature and tinkering in his shop. He is survived by his wife Betty and sons Larry and Rand. Betty lives at their home at 76 Pine Meadow Dr., McArthur, California, 96056

# CSPRA

## Retired Members

NAME	FIRST ADDRESS	CITY	STATE	ZIP CODE	PHONE NUMBER
ALLEN, ROBERT	P. O. BOX 377	IGO	CA	96047-0337	916 396-2850
ALLISON, BILL	96380 DAWSON RD	BROOKINGS	OR	97415	541 469-4685
ANDERSON, CARL	2433 RUSSELL ST	EUREKA	CA	95503	707 442-7273
ATKINSON, JOHN M	2400 LONDON RANCH	GLEN ELLEN	CA	95442-9728	
BAKER, ALTON	5742 FOX RD	MERCED	CA	95348-9445	209 723-5579
BALLOU, JOHN A.	P O BOX 2367	JULIAN	CA	92036-2367	619 765-0470
BATLIN, HARRY	2211 GARDEN RD	MONTEREY	CA	93940	
BEAT, BILL	3550 RIVIERA W DR	KELSEYVILLE	CA	95451	707 444-2212
BITTING, SAMUEL R.	102 RANDOLPH DR	CARL JUNCTION	MO	64834	
BOWDOIN, JEAN	8016 SAW GRASS CIR	CITRUS HEIGHTS	CA	95610-7930	
BROCK, RICHARD L.	5813 PACIFIC HTS RD	OROVILLE	CA	95965	916 533-1650
BRYCE, DOUG	P. O. BOX 292010	SACRAMENTO	CA	95829-2010	916 383-0708
BUSCHKE, DALE H.	355 JACQUELINE DR	SANTA ROSA	CA	95405-5223	707 544-4899
CALDWELL, JAMES. L.	721 CASA REAL CT	VISTA	CA	92083-3407	714 724-3925
CALDWELL, KEITH	P. O. BOX 485	LOTUS	CA	95651-0485	916 622-5827
CATER, WESLEY E.	2870 IRONWOOD AVE	MORRO BAY	CA	93442-1441	805 772-2832
CLINE, CHARLES G.	9482 WILLOW OAK RD	SALINAS	CA	93907	408 633-5798
COOK, GEORGE E.	1500 PARK AVE	CAPITOLA	CA	95010-2449	
COOK, INEZ J.	1796 ARMINGTON AVE	SACRAMENTO	CA	95832-1128	916 421-4606
DAVIS, JAMES G.	5 ILIWI LP	KIHEI, MAUI	HI	96753-7102	808 875-8126
DILLINGER, WILLIAM C.	650 MILLS RD	SACRAMENTO	CA	95864-4914	916 489-4854
DONAHUE, DAVID B	212 AVENIDA SIERRA	SAN CLEMENTE	CA	92672	805 927-1342
DOYLE, JAMES MIKE	2250 ROGUE RIVER DR	SACRAMENTO	CA	95826-2117	916 363-8179
DRAGOO, MICHAEL C.	10 REMINGTON COURT	COLUSA	CA	95932-3030	
ECKLES, JOAN E.	6403 ALCANTRA AVE	ATASCADERO	CA	93422	805 460-0405
ELLISTON, ROBERT	604 PRINGLE AVE #42	GALT	CA	95632	916 745-7112
ENGBECK, JOE	2746 RUSSELL ST	BERKELEY	CA	94705	(510) 841-0339
ENGEL, CRAIG A.	P O BOX 308	SHASTA	CA	96087	916 241-6177
FELTY, RICHARD E.	1312 LAWTON AVE	PACIFIC GROVE	CA	93950	408 655-0550
FOGARTY, THOMAS G.	1150 VINEYARD LN	NAPA	CA	94558-1022	707 224-2275
FREEMAN, ROBERT	14779 PINE CONE WY	MAGALIA	CA	95954	916 873-0757
GEARY, JAMES R.	P O BOX 250	JULIAN	CA	92036-0250	760 765-0426
GOTELLI, DOMINIC W.	9522 FRASCATI WY	SANTEE	CA	92071	619 448-6869
GRANT, DONALD E.	P O BOX 528	COLUMBIA	CA	95310	209 532-5523
HANNA, HAROLD W.	1926 GUNNISON AV	GRAND JUNCTION	CO	81501	970 256-9608
HEACOX, BUD	227 SAN MIGUEL WY	SACRAMENTO	CA	95819-1931	916 457-8845
HENDRIX, JIM	410 WAGON WHEEL	CORVALLIS	MT	59828	406 961-3761
HENRY, ROSS T.	8124 MOUNTAIN AVE	ORANGEVALE	CA	95662-2235	
HOYLE, DONALD W.	P O BOX 2793	ARNOLD	CA	95223-2793	209 795-4121
HUNTER, ERNEST L.	3511 HARDIN WY	SOQUEL	CA	95073	
JACOBSEN, DOUG	400 GLEN DR	OROVILLE	CA	95966	
JENKINS, RAY	41900 WILD HORSE CT	COARSEGOLD	CA	93614-9674	209 642-2316
JOHNSON, G. J.	1212 BEARD WAY	CARMICHAEL	CA	95608-6104	
JOHNSON, MARTIN P	4409 REBEL CIR	COTTONWOOD	AZ	86326	520 646-5779
JOHNSTON, WALTER R.	11240 FAIR OAKS BLVD	FAIR OAKS	CA	95628-5139	916 962-2235
JUNETTE, EUGENE R.	21504 OTTOWA RD	APPLE VALLEY	CA	92308-6428	619 240-2560
KEITH, LYLE B.	P. O. BOX 153	AVERY	CA	95224-0153	209 795-4946
KRUMBEIN, JR., WM. J.	1053 BADGER CT	SANTA ROSA	CA	95409-5701	707 538-9340
LEMLEY, FLOYD A.	408 ANDREW AVE	LEUCADIA	CA	92024-1146	619 942-9036
LIVELY, HARVEY L	5538 KAMET CT	VENTURA	CA	93003	805 644-6543
LONG, DANA B.	P. O. BOX 1269	TUBAC	AZ	85646-1269	520 398-9667
LONNECKER, CARL G.	2750 HWY 101	FLORENCE	OR	97439	503 902-9055

<u>NAME</u>	<u>FIRST ADDRESS</u>	<u>CITY</u>	<u>STATE</u>	<u>ZIPCODE</u>	<u>PHONE NUMBER</u>
LYDEN, CHARLES	142 GLENN DR	FOLSOM	CA	95630-3127	916 983-7380
MARSHALL, WILLIAM E.	5081 WILDERNESS WY	PARADISE	CA	95969-6649	916 877-6176
MARTIN, KENNETH W.	1441 SEVENTH ST	RIPON	CA	95366-3237	209 599-6373
MASON, JACK	RFD BOX 99-1	LOMPOC	CA	93436-9617	805 736-6357
McCALL, J. R.	9028 TALISMAN DR	SACRAMENTO	CA	95826	916 363-7566
McCALL, RON	5194 PONY EXPRESS	CAMINO	CA	95709	916 644-0585
McCARGO, LES	15 STARGLOW CIRC	SACRAMENTO	CA	95831	916 421-3390
McCULLOUGH,	7936 LAKE CAYUGA DR	SAN DIEGO	CA	92119-3139	619 465-6951
McGRATH, DAVID F.	2232 EL CEJO CIR	RANCHO CORDOVA	CA	95670-3122	916 361-3185
MEHLERT, CHARLES	25 VIA VENTURA	MONTEREY	CA	93940	408 375-0316
MERKEL, DALTON E.	04886 OCEANA DR	FLORENCE	OR	97439	541 997-8353
MEYER, FREDERICK A.	3542 DAVID WY	SACRAMENTO	CA	95820-1846	916 456-1069
MICHAEL, JOHN H.	6825 HIDDEN BROOK	CITRUS HEIGHTS	CA	95621	916 722-2609
MITCHELL, CURTIS	13683 QUAKER HILL	NEVADA CITY	CA	95959-9515	916 265-9528
MORGAN, KIRBY R.	45323 PARK SIERRA	COARSEGOLD	CA	93614-9109	209 658-8696
MOTZ, LEE	2656 LA VIA WY	SACRAMENTO	CA	95825-0307	916 486-0717
NEAL, JAMES E.	36 FIR LOOP CT	CARLOTTA	CA	95528	
NEIDER, JAMES E.	542 HART LN	SEBASTOPOL	CA	95472-3813	707 823-2192
OLSON, BARBARA LEE	930 HILLSIDE TER	RIO VISTA	CA	94571-1427	707 374-6485
PATTON, D. G.	533 E CHERRY AVE	ARROYO GRANDE	CA	93420	805 481-5544
PEAT, JAMES H.	1001 SYLMAR AVE,	CLOVIS	CA	93612-1671	209 323-1547
PERKINS, BOB	P. O. BOX 1304	CAVE JUNCTION	OR	97523	503 592-2951
RAWLINGS, RONALD	20523 WANDERING	PIONEER	CA	95666-1288	209 295-7852
REINHARDT, WILLIAM J.	221 W HERNDON #175	PINEDALE	CA	93650-1352	209 683-8093
RITTER, J. M.	857 KRISTIN LN	HEMET	CA	92545	909 766-9305
ROEDER, TERRY D.	739 GRAHAM HILL RD	SANTA CRUZ	CA	95060	
SALZGEBER, GAR	P O BOX 114	ORICK	CA	95555	
SCHLERF, HERMAN	100 RIVERBEND RD	REEDSPORT	OR	97467	503 271-3836
SMITH, KENNETH K.	30 LANCEWOOD WY	IRVINE	CA	92715	714 733-8645
SNIDER, JEFFREY D.	985 BRENTWOOD AVE	GUSTINE	CA	95322	209 854-6014
STAHLBERG, WILLIAM	11643 DEFIANCE WY	MORENO VALLEY	CA	92557	909 242-7825
STEWART, BOB	10780 PONDEROSA	MOUNTAIN RANCH	CA	95246	209 754-4887
STEWART, SAMUEL G.	16100 N HWY 101, #74	WILLITS	CA	95490	916 596-3168
STILES, STAN	288 DANIELLE WY	FOLSOM	CA	95630	916 988-5005
STOWE, JACK	4852 OLIVE RANCH RD	GRANITE BAY	CA	95746	916 791-0061
STRICKLER, CLYDE	913 JEFFERSON AVE	LOS BANOS	CA	93635	209 826-0155
TANNER, GARTH R.	P. O. BOX 191104	SACRAMENTO	CA	95814-1104	
TARDIF, ROBERT	P O BOX 254	AVERY	CA	95224	209 795-4913
THOMAS, LARRY S	3490 SANTOS CT	TURLOCK	CA	95382	209 632-2921
TOWNSEND, HOMER	P O BOX 1546	BORREGO SPRINGS	CA	92004-1546	619 767-3986
TUBBS, MEL	547 EL MODENA AVE	NEWPORT BEACH	CA	92663-5114	UNLISTED
ULM, AL	1110 OLD MT VIEW RD	EL CAJON	CA	92021-7838	619 447-3138
WAKEFIELD, LOUIS C.	2600 SUNSET AVE	BAKERSFIELD	CA	93304	805 634-9519
WALLACE, KIRK	P O BOX 687	MI WUK VILLAGE	CA	95346-0687	209 586-3209
WELTS, ALLEN	5860 SUN VALLEY WY	SACRAMENTO	CA	95823-5222	916 422-6794
WESTBERG, RAYMOND	35066 DATE ST	YUCAIPA	CA	92399-2881	970 242-5080
WHITE, JOSEPH H.	5800 GARDEN PARK	GARDEN VALLEY	CA	95633	
WILLIAMSON, EDGAR L	107 PERRAUD DR	FOLSOM	CA	95630-2911	916 983-2430
WILSON, NORMAN L.	291 RUSSELL RD	AUBURN	CA	95603-4110	916 885-4850
WILSON, T. A.	5081 WILDERNESS WY	PARADISE	CA	95969-7107	916 877-6916

R  
e  
t  
i  
r  
e  
d  
  
M  
e  
m  
b  
e  
r  
s

## Retirees' Ramblin's

Jim Davis

Greetings from the middle of the Pacific, Maui - Hawaii where "Ramblin" is difficult. Maui is about fifty miles long and nine miles wide where the roads are. Most of the island is occupied by two volcanoes, one five thousand feet high and extinct and the other ten thousand feet high and dormant (last eruption, two hundred years ago). I was at the harbor recently picking up something or other and there I witnessed a scene that would tear at the heart of the dedicated "R-Ver". These California folks were picking up their forty foot plus Class A motor home. Dad, who had come on ahead, was explaining to Mom and the kids, just arrived, that there were no RV parks — that State and County Parks were "hike-in" and that there were no R-V dump stations. What is the old saying? "Before you invest, investigate."

1996 was an interesting year in our house. In March, I lost an eye due to a complete retinal detachment. I got seventy two good years out of it, so no complaint. On the good side I published my first book, the history of my World War II Army Engineer unit. It sells well, particularly to Army historical offices which was my hope. Research has been started for the next one, an illustrated history of the fire trucks of my World War II days and my careers with the National Park and the California State Park Services, hoping to publish this fall.

This section of the CSPRA News Letter is really, as I read it, to share "Ramblin" experiences. Our "Ramblin" has put on hold for a while as an elderly family member, who lives with us, fell last fall and broke a hip. She now lives with a walker and wheel chair and much care from us. Someday, we will "Ramble" again, first to the South Pacific which we have yet to visit and then back to South East Asia which we have. Until we can tell a bit about those "Ramblins", we wish you and yours the best. Aloha.

Kirby Morgan

We have left our home base at Coarsegold, CA and are wondering our way north to

Oregon and Washington. We vend at various street fairs and festivals until July when we start our three month volunteer stint with Oregon Fish & Wildlife, Columbia Regional Office in Clackamas. We were there two months last year. Had a wonderful experience. I worked ground maintenance and Carol worked in the office and for the District Volunteer Coordinator.

In October we work our way back to Sacramento via the Rendezvous, for a two month job at a tie Cart at Arden Fair, at least that's the way the contract is being drawn up now. We have not signed it, got to double check the fine print. So guess this is dreams until our signatures are inked in place.

Bill Krumbein

Let's see . . . a while back I took a hot air balloon ride, I haven't trimmed my mustache for about a year now, jumped out of an airplane, wear two earrings in my left ear and just got tattoo.

My future agenda includes a biplane ride, a rafting trip, a hike across the Grand Canyon and maybe I'll grow a ponytail.

This all fits with my new found philosophy, "It's okay to color outside the lines." Beth sometimes thinks I'm coloring off the page. I'm really enjoying life.

Bob Perkins

I will be flying my airplane into "Turlock Muni." (To attend the Retirees Rendezvous) Dave Stratton will meet me. Looking forward to the event!



*Editor's Note: Bob has many tales to tell about his exciting retirement exploits. He'll be telling these at this year's Retiree's Rendezvous at McConnel October 2-6. Maybe he'll tell you the one about Bo Derek, Brigitte Bardot, "Tiger Lady" and the 800 pound lion.*

*Maybe he'll tell you the one about Bo Derek, Brigitte Bardot, "Tiger Lady" and the 800 pound lion.*



## District Reps

<u>Name</u>	<u>District</u>	<u>Work Phone</u>	<u>Home Phone</u>	<u>FAX</u>
Muetz, M	American River	916 988-0205	916 622-9133	
Padilla, F	Angeles-Coast	805 986-8484	818 880-4510	805 488-5367
Crossman, J	Angeles Inland	805 945-1323		805 940-7327
Edgemon, C	Bay Area-Coast	415 726-8800	415 879-2025	415 726-0668
Nielson, C.	Bay Area-Inland	510 837-2525		
Harrison, W	Calaveras	209 795-3488	209 795-5342	209 795-7306
Vacant	Channel Coast			
Zemon, J	Colorado	619 767-5311		
Stokes, M	Four Rivers	209 826-1196	209 632-1627	209 826-1196
Simmons, K.	Gold Rush Dist	916 445-7387		916 327-5655
Redoble, J	Los Lagos	909 657-0676	909 943-5119	909 657-2736
Whitehead, M	Marin	415 435-5390	415 435-3082	415 435-5390
Moffat, W	Monterey	408 667-2315		
Nelson, D	Northern Buttes	916 225-2065	916 246-4070	916 225-2038
Jones, R	North Coast	707 946-2409	707 725-4920	707 441-5737
Serpa, J	Orange Coast	714 496-6172	714 493-0773	
Vacant	Pismo Dunes	805 473-7230		
Joe, K	Russ-Mendocino	707 937-5804	707 877-3592	707 937-2593
Broderick, K.	Russ-Mendocino	707 847-3286	707 785-3432	
Kerbavaz, J	So Srvc Cnter	619 220-5357	619 575-6913	619 575-6913
Vacant	San Diego Coast			
Scott Nakaji	San Joaquin	209 822-2332	209 437-0127	209 822-2319
Knapp, E	San Luis Obispo	805 772-7434	805 927-3516	805 541-4799
Van Schmus, J	San Simeon	805 927-2020	805 772-9648	805 927-2031
Oka, S.	Santa Cruz	408 338-2935	408 338-7914	408 335-7091
Lindsey, T	Sierra	916 525-7232		916 525-6730
Nixon, V.	Silverado	707 279-4293	707 279-7713	707 279-0401

The District Reps are your best connection with the board. Give them your ideas, suggestions, questions and complaints.

## Do You Know Someone Who Is Retiring? Then Order Their Plaque Now!

Yes, CSPRA provides a plaque for each member when they retire if a friend, supervisor, spouse or even the employee themselves will let us know the following:

Name to appear on plaque: \_\_\_\_\_

Number of years employed by DPR: \_\_\_\_\_

Employee would like to be remembered on the plaque as a Ranger,  
Superintendent or: \_\_\_\_\_

Send plaque to CSPRA member \_\_\_\_\_ for  
presentation on \_\_\_\_\_ The address the plaque should be sent  
to is:

## CSPRA Finances

Checking  
Balance  
\$725.36

General  
Savings  
Balance  
\$5,239.05

SAVE  
Bodie!  
Savings  
\$1,268.20

**Aug—Sept**



**1997**

California State Park Rangers Assoc  
P O Box 292010  
Sacramento, CA 95829-2010

Bulk Rate  
U.S. Postage  
Paid  
Permit  
Number 43  
Elk Grove, CA

To:

MUETZ, MICHAEL G.  
2781 STONECREST CT  
PLACERVILLE CA 95667-4965

President  
Scott Nakaji  
State Park Ranger II  
San Joaquin District  
(209) 822-2332  
eMail nakaj@telis.org  
\*\*\*\*

President-Elect  
Jill Dampier  
State Park Ranger II  
American River — Auburn  
(916) 885-4527  
eMail damp@psyber.com  
\*\*\*\*

Secretary/Treasurer  
Susan Grove  
State Park Ranger II  
Colorado Desert — Palomar  
(760) 742-3830  
\*\*\*\*

Directors  
Jeff Price  
State Park Ranger IV  
Marin District  
(415) 893-1589  
Home Business (415) 898-8841  
olompali@aol.com

## CSPRA Calendar

Retiree's  
Rendezvous  
10/2-6/97

Cal Parks  
Conference  
3/9-12/98

Nick Franco  
State Park Ranger II  
San Juan Bautista  
(408) 623-4527  
eMail cnfranco@aol.com  
\*\*\*\*

Joanne Kerbavaz  
Sr State Park Resource Ecologist  
Southern Service Center  
(619) 220-5357  
jkerbava@parks.ca.gov  
\*\*\*\*

Dave Collins  
State Park Ranger I  
American River District — Auburn  
(916) 885-5821  
eMail ohv@psyber.com  
\*\*\*\*

All committees use CSPRA address.  
For additional information on the  
association, write to  
CSPRA

P O Box 292010  
Sacramento, CA 95829-2010  
California (800) 994-2530  
FAX (916) 387-1179  
eMail dugbryce@earthlink.net