

# NEWSLETTER

california state park rangers association

VOLUME VI NUMBER 9

AUGUST 1989

## Bonnie Porter, 1944-89

On July 5, 1989, Bonnie Porter died in Sacramento of heart failure after entering the hospital with a high fever. She had worked as a historian in the Resource Protection Division for 13 years. At the time of her death, she was working in the Environmental Review Section as an Associate Park and Recreation Specialist. Active in the U. S. Air Force, as well, she had attained the rank of Lieutenant Colonel in the Air Force Reserves. She was 45 years old. YYY

## 125-Year Projects & Research

Many projects and research areas were identified by the 125-Year Committee and as suggestions from field personnel. Please contact Susan Ross or the person identified after the subject, if you are interested in any of these areas:

- \*Galen Clark History
- \*1st Wardens, Big Basin 1902-28 - Verardo
- \*First Custodians, Historical Monuments prior to 1928
- \*History of the Ranger specs - Lynch
- \*Research DPR employee picture file
- \*Medal of Valor recipients - Drago
- \*Ranger achievements off the job
- \*Women Rangers - Mary Pass, et al
- \*Uniforms, patches, & badges - Lynch
- \*First Rangers in parks 1928 - 1947
- \*Research Park Commission minutes from 1928
- \*Research News & Views 1940 - ?
- \*History of park law enforcement - Mike Kania
- \*Philosophy of park ranger work - Verardo
- \*Early NPS Rangers
- \*History of the Ranger name - Ortiz
- \*125-Yr commemorative gun-Wilbur
- \*Contact retired rangers for info.
- \*Unit Ranger Histories for pre- 1947 parks YYY

## FERAL CATTLE REMOVAL ANZA - BORREGO DESERT STATE PARK

Marck C. Jorgensen, Naturalist  
(ARTICLE PREPARED IN 1987)

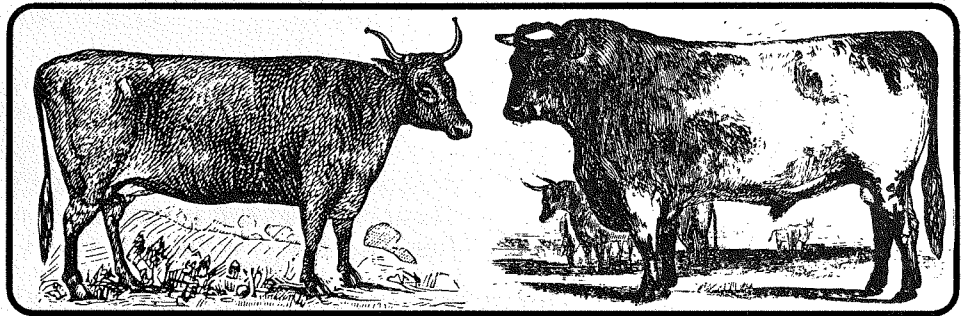
### BACKGROUND

Feral cattle have been recognized as a major resource problem in Anza-Borrego Desert State Park since investigations revealed damage in 1972.

Cattle escaped or were abandoned from active herds and maintained themselves in remote canyons near permanent water sources. Many cattle were born in the feral state and had never been handled or herded by humans.

Efforts to remove feral cattle from the park were futile until the helicopter/net gun program was instituted in 1987. Cowboys had been employed, dogs were used, tranquilizing guns were tried from the ground, corral traps were constructed, all to no avail.

An attempt to secure legislation through the State Senate allowing park officials to shoot the feral cattle met with fierce opposition from the California Department of Agriculture and State and County Cattlemen's Associations.



### PROJECT IMPLEMENTATION

1987 brought with it a solution. \$30,000 of State Park resource money was allocated for feral cattle removal and an additional \$12,000 of private grants were received by the park. \$7,000 of this came from Safari Club International and \$5,000 came from the Campfire Conservation fund in New York City.

Feral cattle were documented to be in competition with bighorn sheep in Anza-Borrego and were suspected of transmitting exotic viruses to the bighorn.

(Continued on page 3)

**THE CALIFORNIA  
STATE PARK RANGERS  
ASSOCIATION**

A professional association.

Office of the  
Executive Manager  
**Doug Bryce**  
P. O. Box 28366  
Sacramento, CA 95828  
(916) 383-2530  
\*\*\*\*\*

**PRESIDENT**  
**Don Murphy**  
(714) 780-6222  
\*\*\*\*\*

**VICE PRESIDENT**  
**Bud Getty**  
(408) 335-9145  
\*\*\*\*\*

**TREASURER**  
**Kevin Joe**  
(707) 877-3592  
\*\*\*\*\*

**DIRECTORS**  
**Donna Pozzi**  
**Jeff Price**  
\*\*\*\*\*

**NEWSLETTER**  
**Doug Bryce, Editor**  
(Vacant), Ass't. Editor  
\*\*\*\*\*

**CAL RANGER**  
(Vacant)  
\*\*\*\*\*

For additional information on the association,  
write the  
Executive Manager.

## PRESIDENT'S MESSAGE

The "public servant" concept has often been maligned, especially in recent months. Scandals in Washington D.C., politicians convicted of various crimes, and public servants of every stripe and color indicted for everything from embezzlement to influence peddling all reflect poorly on the public servant.

The reason for this is most of us have a misconception of what a servant is. I am reminded of a sermon by the late Dr. Martin Luther King where he told of two contentious disciples who wanted to be number one in the kingdom of heaven. Dr. King called this the "Drum Major Instinct," the desire to be out in front. However, the disciples were told that if they wanted to be first they had to become servants of their fellow disciples. In other words they had to be last to be first. As Einstein pointed out, whenever you are faced with a paradox, you are on the verge of an important discovery. That is certainly true in this case.

If each of us is committed to being the servant of the other, then everyone is first. It is the only way everyone can occupy the number one position without stepping on others. By now you must be wondering what in the world has this got to do with park professionals.

We are public servants. It is the time of year when our parks are teeming with visitors, the weather is often hot, and after long hours of public contact it is not always easy to maintain the attitude of the public servant. You often ask the question, "is it really worth it?" The friendly smile, the warm greeting may turn into a callous contempt for the public we serve. It is easy to let our emotions run away with us and to give in to the desire to lash out at a less than courteous park visitor. Or, if you are a park planner or work in the development division as a landscape architect, you may get fed up with your plans being changed for political expediency. Don't lose heart!

Being a professional means that you are committed to the ideals, goals, and values of the job you hold. The degree to which we as individuals remain true to that commitment will determine our ultimate success. In the short run there will be frustrations, disappointments, defeats, and disillusionments. But in the long run if we remember that to be last is to be first, the image of the public servant will always be a positive one. YYY

The **NEWSLETTER** (ISSN 0887-9176) is published by CSPRA, P.O. Box 28366, Sacramento, CA 95828.

The **NEWSLETTER'S** Editor is Doug Bryce; contributing editors and authors are as noted. Articles are welcome, 1000 words or less. All submissions become the property of CSPRA and may be edited without notice.

## FERAL CATTLE

(Continued from page 1)

The Bighorn Research Institute of Palm Desert, California was asked to assist with disease studies during the capture effort. Forty-one blood samples were taken from captured cattle to assess evidence of non-native viruses such as bovine viral diarrhea, parainfluenza III, epizootic hemorrhagic disease, and blue tongue. Tests for active viral infections were also performed with nasal samples.

The capture strategy was to snare the feral cattle by use of a 16' x 16' net fired from a British .303 rifle out of a Hughes 500D helicopter. A special crew from New Zealand was flown to Anza-Borrego to perform the capture work and ferrying of animals from the wild to the park's holding facility. Mel Cain of Skydance Helicopters in Alpine, California was the primary pilot for the capture. Wallace Swearington of Westmoreland was contracted by the Bureau of Livestock. The brand inspector, Wayne Williams, then inspected each animal at Westway Feedlot in Brawley.

Ninety-seven feral cattle were removed from the park between April 1 and April 8, and again from May 18 through 20, 1987. Some stock were left due to dense foliage, high winds, or their large size. Stock was left in Hellhole Canyon, since they were hiding beneath sycamores and alders each time crews flew that area.

### PLANS FOR FUTURE CAPTURE WORK

(At time of writing in 1987.)

We plan to resume capture efforts in early December 1987. At this time the autumn leaves will be off the trees and visibility to the canyon bottoms will enhance our cap-

Capture Results						
	BULLS	STEERS	COWS	HEIFERS	CALVES	SUBTOTAL
APRIL 1	4	0	2	5	3	14
2	0	0	4	3	5	12
3	1	0	6	1	1	9
4	3	0	10	2	7	22
5	3	0	8	1	2	14
6	2	0	6	3	1	12
7	0	2	3	0	0	5
8	0	0	0	1	0	1
MAY 18	0	0	0	0	2	2
19	0	0	0	0	1	1
20	1	0	2	0	2	5
TOTALS	14	2	41	16	24	97
CALF: COW = 59:100						
HEIFER: COW = 39:100						
BULL: COW = 34:100						
Results of the 41 blood samples from feral cattle in Anza-Borrego are as follows:						
VIRUS		% SHOWING EXPOSURE				
Para-Influenza III		100				
Blue Tongue		50				
Bovine Viral Diarrhea (BVD)		90				
Bovine Respiratory Syncytial Disease (BRSD)		100				
Epizootic Hemorrhagic Disease (EHD)		95				
Infectious Bovine Rhinotracheitis (IBR)		25				
Toxoplasmosis was found in 5% of the samples. Toxoplasmosis has been associated with fecal contamination of water sources, and interestingly, has been associated with felines.						
NOTE: Tests show those viruses which the cattle had been exposed to. The viruses were not necessarily active at the time of sampling. Animals may act as carriers without showing clinical signs of disease.						

ture success.

Further capture work will be conducted using money from the San Diego Fish and Wildlife Advisory Committee and the Safari Club International. It is anticipated that three days will be required to complete captures in Coyote Canyon, Buck Ridge, Hellhole Canyon, and the south Fork of Indian Canyon.

Two other areas are of concern to us for the Autumn 1987. Upper Buck Ridge in Sections 4 and 10 have cattle run by Mike Schaefer of Norco. In May, twenty head were observed on park land and Schaefer was contacted. Schaefer

is working during the summer of 1987 to bait these remaining head into his corral. If by summer's end he is not successful we will capture any remaining stock by helicopter.

A trespass in Chariot Canyon of cattle owned by Mike Muschet of Julian also poses concern. He has been contacted twice concerning this trespass and has worked to remove his cattle. If any future trespass is noted we will remove his cattle to Brawley using contracted cowboys.

(Continued on page 4)

## Feral Cattle (Continued from page 3)

### BLOOD SAMPLES FOR DISEASE RESEARCH

Interpretation of blood samples is underway at the Bighorn Research Institute. Preliminary results show this testing could provide landmark data in the field of bighorn/cattle interaction. It has long been suspected that cattle play an important role in acting as a disease reservoir for wild ungulates such as bighorn sheep. Several viruses discovered in sick bighorn lambs are non-native and are thought to have been introduced by domestic livestock. Six viruses have been shown to have entered the feral cattle population at Anza-Borrego.

Results so far show that the captured cattle had been exposed to many viruses which have been implicated in the high mortality of native bighorn, especially parainfluenza III. Results have not been fully interpreted and a detailed analysis is pending.

### CONCLUSION

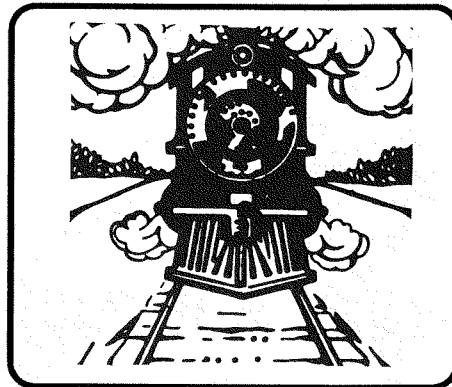
The capture of feral cattle from Anza-Borrego Desert State Park was an unqualified success. Fifteen years of effort was expended to finally remove significant numbers of feral cattle from park land. The level of success was a surprise to the California Department of Agriculture, the Department of Fish and Game, the Cattlemen's Association, and cattlemen of the region.

Cattlemen in the San Diego and Riverside County region now realize the State Park System means business when it says it will not tolerate trespass cattle on park land. Momentum has been beneficial to resolving other associated cattle problems and has engendered a cooperative spirit between

## RAIL TRANSPORTATION INITIATIVE LAUNCHED BY PCL

The Planning & Conservation League is now collecting signatures to qualify a \$1.9 billion rail transportation bond act for the ballot. The goals of the bond measure are to finance better public transportation and thereby improve air quality and save energy.

While Californians continue their love affair with the private automobile, many people are recognizing that widespread car use has spawned a host of problems including smog, sprawl, and high-way congestion.



Motor vehicles are the largest contributors to each and every type of air pollution in California. In metropolitan areas, automobiles contribute 80% of carbon monoxide (a greenhouse gas), 70% of hydrocarbon levels (primary smog ingredient), and 50% of nitrogen oxides (smog and acid deposition). In addition to degrading our air environment, autos are using increasing amounts of petroleum

the cattlemen and the Anza-Borrego staff.

Private organizations were of great assistance in making the capture a success. Their continued support in future capture work will ensure the problem of feral cattle in bighorn habitat in Anza-Borrego will be resolved once and for all.\*\*\*

each year. Motor vehicles now account for a larger percentage of our total domestic oil demand than they did at the time of the 1974 oil crisis. The result is that 40% of all U. S. oil is now imported and our domestic reserves will be depleted in approximately twenty years.

Fortunately, there is an alternative. Public transportation, and rail projects specifically, provide many advantages. High-capacity train use (both in urban areas and between cities) improves air quality and requires less energy per passenger-mile than any other form of motorized transportation. As a result, train use will reduce health care costs, especially for respiratory illnesses, as well as reduce our reliance on imported oil, and slow the depletion of domestic supplies. Furthermore, rail travel will relieve traffic congestion and provide opportunities for rapid commuting and travel to those who can take advantage of it, including individuals who are unable to afford a car or cannot drive.

In recognition of these benefits, The Planning and Conservation League is sponsoring the Clean Air and Rail Transportation Act. The Act is an initiative intended for the June 1990 ballot. It would create the Clean Air and Rail Transportation Act. The Act is an initiative intended for the June 1990 ballot. It would create the Clean Air and Transportation Improvement Fund from the sale of general obligation bonds to fund public transportation projects including intercity, commuter, and light rail projects.

The funds from the bond measure would be allocated largely on a per capita basis. Eligible expenses (Continued on page 7)



## CHARTER MEMBERS

(Accidently omitted last month)

Batlin, Harry	P. O. Box 1110	San Juan Bautista, CA	95045
Johnson, Gerald	1212 Beard Way	Carmichael, CA	95608
Miller, Tom	13331 Enterprise Lane	Huntington, CA	92648
Wallace, Kirk	4425 Reading Drive	Oxnard, CA	93033

## RETIRED MEMBERS

Anderson, Carl	4201 Michell Road	Eureka, CA	95501
Baker, Alton	5742 Fox Road	Merced, CA	95348
Brock, Dick	Route Box 3704	Wofford Heights, CA	93285
Bryce, Doug	P. O. Box 28366	Sacramento, CA	95828
Caldwell, Keith	P. O. Box 485	Lotus, CA	95651
Cater, Wesley E.	2870 Ironwood	Morro Bay, CA	93442
Cline, Charles G.	595 El Camino Real #113	Salinas, CA	93907
Crawford, Bob	345 Camino Verde	Boulder Creek, CA	95006
Davis, James G.	18536 Symeron Road	Apple Valley, CA	92307
Dillinger, William C.	650 Mills	Sacramento, CA	95864
Doerksen, H. L.	30551 Holly Berry Lane	Temecula, CA	92390
Fairchild, Frank	P. O. Box 776	Goldfield, NV	89013
Fiahlo, Gerald	140 Hazel Lane	Nipomo, CA	93444
Fogarty, Thomas G.	1150 Vineyard Lane	Napa, CA	94558
Forsyth, Lorin	20651 6th Street	Nuevo, CA	92367
Frincke, M. M.	6290 Brookdale Drive	Carmel, CA	93923
Grant, Donald E.	P. O. Box 868	Columbia, CA	95310
Greene, Jim	6949 South Hwy 33	Gustine, CA	95322
Griffith, L. P.	P. O. Box 131	Gracagle, CA	96103
Hanna, Harold W.	1490 Princeton Road	Woodburn, OR	97071
Hartwell, Kent	P. O. Box 889	Magalia, CA	95954
Haussler, W. J.	7120 Westmoreland Way	Sacramento, CA	95831
Hayes, Jeremiah	P. O. Box 607	Hydesville, CA	95547
Heacox, Bud	227 San Miguel Way	Sacramento, CA	95819
Hendrix, Jim	P. O. Box 95	Borrego Springs, CA	92004
Huston, Guy M.	502 East "G" Street	Ontario, CA	91764
Johnston, Walter R.	11240 Fair Oaks Blvd	Fair Oaks, CA	95628
Junette, Eugene R.	21504 Ottawa Road	Apple Valley, CA	92308
Keith, Lyle B.	P. O. Box 153	Avery, CA	95224
Kishbaugh, Gordon T.	110 Coronado Circle	Santa Rosa, CA	95409
Knight, John H.	111 Wild River Road	Folsom, CA	95630
Lemley, Floyd A.	408 Andrew Avenue	Leucadia, CA	92024
Lively, Harvey L.	5538 Kamet Ct	Ventura, CA	93003
Long, Dana B.	P. O. Box 1269	Tubac, AZ	85646
Lonnecker, Carl G.	P. O. Box 143	Portola, CA	96122
Lyden, Charles	142 Glenn Drive	Folsom, CA	95630
Marshall, William E.	5081 Wilderness Way, 1-L	Paradise, CA	95969
Martin, K. W.	1441 Seventh Street	Ripon, CA	95366
Mason, Jack	RFD Box 99-1	Lompoc, CA	93436
McCall, J. R.	9028 Talisman Drive	Sacramento, CA	95826
McCullough, Ronald C.	7936 Lake Cayuga Drive	San Diego, CA	92119
McMullen, Charles	4300 Kenneth Avenue	Fair Oaks, CA	95628
Mehlert, Chuck	25 Via Ventura	Monterey, CA	93940
Menefee, R.L.	19282 Robinson Road	Sonoma, CA	95476
Mentz, Ed C.	2183 White Lane	Stockton, CA	95205
Meyer, Frederick	3542 David Way	Sacramento, CA	95820
Michael, John H.	726 Clipper Way	Sacramento, CA	95831
Miller, Dale B.	1325 Winterhaven Road	Fallbrook, CA	92028
Milne, C. L.	309 Wisconsin Street	El Cajon, CA	92021
Mitchell, Curtis	13683 Quaker Hill Cross	Nevada City, CA	95959
Morgan, Kirby R.	10175 Joerschke Dr, #103	Grass Valley, CA	95945
Morrison, G. I.	3033 Cleveland, Suite 110	Santa Rosa, CA	95401

## RETIRED MEMBERS - CONTINUED

Myer, Lew	895 Sierra Vista, #126	Las Vegas, NV	89109
Neal, James E.	16209 Spangler Peak Road	Ramona, CA	92065
Newlin, Clyde L.	4863 East Live Oak Rd	Lodi, CA	95240
O'Rourke, M. E.	500 N Street, #708	Sacramento, CA	95814
Oller, Morrie	3835 Gardiner Ferry Rd #18	Corning, CA	96021
Pearson, L. D.	3515 East Home Avenue	Fresno, CA	93703
Perkins, Bob	P. O. Box 902	Crescent City, CA	95531
Reinhardt, William J.	5090 North College Ave, 116	Fresno, CA	93703
Salzgeber, Al	5511 Calle Arena	Carpenteria, CA	93013
Schlerf, Herman	3900 Hwy 36	Hydesville, CA	95547
Schlotter, Jack W.	HCR-1, Box 7160	Igo, CA	96047
Shook, Harry B.	53-400 Avenida Rubio	LaQuinta, CA	92253
Short, Orville	202 Pelayo, Apt B	San Clemente, CA	92672
Spencer, Thomas D.	475 Sims Road	Santa Cruz, CA	95060
Stahlberg, William A.	11643 Defiance Way	Sunnymead, CA	92388
Stewart, Samuel G.	903 Clifford Drive	Lake Almanor Peninsula, CA	96137
Stowe, Jack	4852 Olive Ranch Road	Roseville, CA	95661
Stratton, David L.	P. O. Box 2446	Oakhurst, CA	93644
Tardif, Robert	P. O. Box 254	Avery, CA	95224
Thomas, Larry	3490 Santos Court	Turlock, CA	95380
Van Deusen, Phillip	135 Calle de Andulicia	Redondo Beach, CA	90277
Wakefield, Louis C.	P. O. Box 87	Tehachapi, CA	93561
Wallace, Kirk	4425 Reading Drive	Oxnard, CA	93033
Walling, William H.	2860-A Camino Dos Rios	Newbury Park, CA	91320
Walstrom, John	9652 Lakeview Road	Lakeside, CA	92040
Weiss, Alexander	315 Crestmont	San Francisco, CA	94131
Welch, Jack	2050 Allesandro Trail	Vista, CA	92083
Welts, Allen	5860 Sunnyvale Way	Sacramento, CA	95823
Westberg, Raymond E.	6929 Mariposa Avenue	Citrus Heights, CA	95610
Wilson, Ed	1100 Fathom Ct	Oxnard, CA	93035
Wilson, T. A.	5081 Wilderness Way, #23M	Paradise, CA	95969

## SAVE BODIE! COMMITTEE UPDATE

This month's column sounds a lot like previous reports. We're still in the news all across the country. We're now working with a second TV network for a news story; we've been on a syndicated public radio show ("Cal-Net"); the Associated Press article has been picked up in papers as far away as Iowa; and we've been contacted by a major paper's editorial board. (Please keep those clippings coming!) We're talking and corresponding with a number of legislators, and they continue to be responsive and concerned about Bodie. There have been more meetings with lawyers, and we're still working to learn everything

we can about mining, the permit process, and sentiment in Mono County. Our fundraising effort is going well -- we're beginning to bring in money faster than we're spending it! We hope to see you at Sutter's Fort on August 19 for our first fundraising event. (Call 916 454-5343 for details.)

Lastly, all of this is due to the hard work of dedicated CSPRA members and other supporters. In particular, the group organizing the benefit at the fort deserves special recognition and thanks. Patty Posner has done a great job, assisted by Betty Paris and Nina Gordon. Patty's committee includes others who will be listed in the write-up after the event. Meanwhile, these three have planned what promises to be a fun, memorable, educational, and profitable evening. YY

## (SAMPLE LETTER)

Dear Senator McCorquodale,

I am opposed to the amendment to AB 1246, O'Connell, which would allow the sale of the Las Cruces property at Gaviota State Park to the Vista Del Mar School District. The sale of this state park would set a bad precedent and violates the Public Resources Code which states that state parks "...shall be held in trust as irreplaceable portions of California's natural and historic heritage."

I urge you to reject this amendment so that the integrity of our state park system may be maintained.

Sincerely, (Your Name)

(SEE ARTICLE NEXT PAGE)

include purchase of light rail passenger cars and locomotives, track improvements to allow higher speeds, construction of new stations and improvements to existing ones, and acquisition of rights-of-way. The main intent of the measure is to provide funding for well-planned cost-effective projects which can be implemented quickly.

Californians will benefit in very tangible ways if this initiative is approved by the voters on the June 1990 ballot. But first, we must gather 600,000 signatures by the middle of October in order to qualify the initiative for the ballot.

Volunteers are already working toward this goal because they realize that if alternatives to gridlock, smog and sprawl are to be available, Californians must look now to improved rail transportation. If you are willing to donate three hours to this effort, please contact David Manhart at PCL (916) 448-1786. YYY

## SALE OF STATE PARK TO BE HEARD BY SENATE NATURAL RESOURCES AND WILDLIFE

The sale of the Las Cruces property at Gaviota State Park to the Vista Del Mar School District has been referred to the Senate Natural Resources & Wildlife Committee. Legislation authorizing the sale of Las Cruces was introduced by Assemblyman Jack O'Connell as an amendment to an education bill, AB 1246.

CSPRA president Don Murphy, state park and recreation commissioner Ray Nesbitt, and Vivian O'Bern of the Santa Barbara Trust for Historic Preservation testified before the Senate Education Committee in opposition to the amendment. The Education Committee referred the bill with the amendment to the Natural Resources & Wildlife Committee. This referral was at the request of Senator McCorquodale who is chairman of the committee and at the urging of CSPRA president Don Murphy.

We need your help! If this amendment is to be defeated we need every CSPRA member to write a letter to Senator McCorquodale opposing the sale of the Las Cruces property to the Vista Del Mar School District. The sale of this state park would send a terrible message to would-be developers and others who see state park land as vacant land ripe for the picking.

The Department won an important court battle when a judge denied the condemnation suit brought by the Vista Del Mar School District against the Department. Basically, the judge ruled that the property was already being used for the public good and that other suitable sites exist for the building of the school which will serve 55 students.

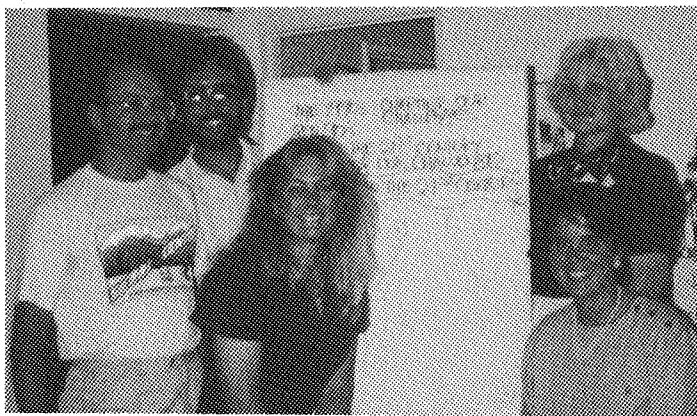
### DON'T BE FOOLED BY MONEY!

Other environmental groups and the people of Santa Barbara are being told that the Las Cruces property will bring \$1.5 million for the purchase of new state park lands in Santa Barbara County. However, out of that \$1.5 million legal fees must be paid of nearly \$250,000. Furthermore, there is absolutely no guarantee that the money will be used to purchase state park lands in Santa Barbara or anywhere else. The amendment authorizing the sale of Las Cruces does not stipulate where the funds from the sale are to be expended. Therefore, the funds are most likely to go to the State Park and Recreation Fund and to be appropriated as part of the Governor's budget in 1990/91. And as we have seen with this current budget, the governor may veto any such appropriation.

A more important and even more dangerous precedent may be set by "selling your sister to buy your brother." All park professionals concerned with maintaining the integrity of the state park system, and preventing the gradual deterioration of the state park system should write to the following address in opposition to the amendment of AB 1246. YYY

**The Honorable Dan McCorquodale**  
Natural Resources and Wildlife  
Committee

California State Senate  
P. O. Box 942848  
Sacramento, CA 94248-0001  
(SEE SAMPLE LETTER ON  
PAGE 6)



1990 Conference Program Committee Meeting: Tom Hoff-sommer (PRAC); Rick Le Flore, Joann Ellison-Le Flore, Nina Gordon (CSPRA); and Betty Mellor (League).



Cooperating Association Committee Meeting: Ed Navarro; Nina Gordon; Nancy Fuller; Bill Dillinger; and CSPRA President Don Murphy.

# HELP WANTED!

Help is needed for the production of the NEWSLETTER.

**Assistant Editor:** Activities include the solicitation of feature articles for the NEWSLETTER and developing an ongoing list of needed articles for future NEWSLETTERS.

**Feature Writers:** Persons are needed to write on various facets of the Department's activities and on threats to the State Park System.

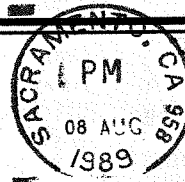
**NEWS:** Reports on interesting happenings regarding the Department or its employees . Share with your organization the interesting occurrences in your part of the Department. **YYY**

**CAL RANGER** Also needed is an editor for the CAL RANGER. Availability of a Macintosh computer is desirable. It is much easier than you think. Call Doug Bryce today. **YYY**

## LOCAL MEETINGS

The next regional meetings will be held in the Lake Tahoe area and in southern California. The Lake Tahoe meeting will be held September 7 at the Pizza Hut in Tahoe City. A meeting will be held in San Clemente on October 5. The location will be announced in the next NEWSLETTER. Meetings will begin at 7:00 p. m.

California State Park Rangers Association  
P. O. Box 28366  
Sacramento, CA 95828-0366



Mail to:

JOHN D. MOTT  
116 TREETOP DRIVE  
SANTA CRUZ CA 95060