

NEWSLETTER

california state park rangers association

VOLUME VI NUMBER 5

FEBRUARY 1989

COMPROMISE REACHED ON OLD SACRAMENTO OFFICE TOWER

by Dick Troy

On January 11, an agreement was reached between the City of Sacramento, the developer, and the Save Old Sacramento Committee regarding a proposed 210-foot office building on the south boundary of Old Sacramento. The City Council had narrowly approved the project last July over the outcries of a broad range of individuals and community groups. (Continued on page 6)

DEPARTMENT RE- VERSES STAND ON LAS CRUCES

We have learned that the department has agreed to sell sixteen acres of land at Las Cruces, in Gaviota State Park, to the Vista Del Mar Union School District for construction of an elementary school. This decision repudiates the Department's long-standing position that the school is an incompatible use that would irreversibly damage the natural, cultural, and esthetic features of the Las Cruces site. In August 1988, the Department successfully defended itself from a land condemnation suit brought by the school district. The Department's original position and philosophy were validated by the court. ♣

BODIE MINING PROPOSAL

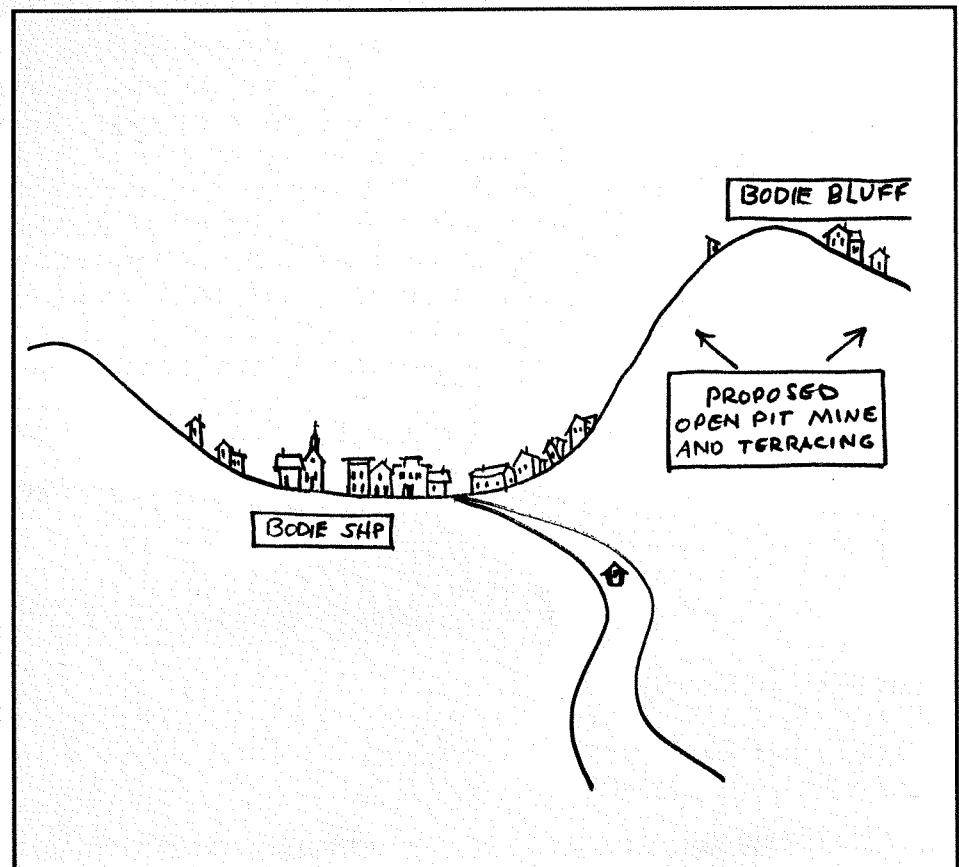
by J. Brad Sturdivant

In times past when a corporation moved into an economically depressed area, the company provided income for those in need, increased business for local merchants, and took an active part in community development. A concern for the environment was non-existent.

Has anything changed?

I now have a better understanding of what small underdeveloped countries must experience when larger, more advanced countries come to "develop" natural resources.

A large Canadian company, Galactic Resources Ltd., has sired Galactic Services Inc. It is this latter organization that has purchased or leased 4,000 acres of mineralized property in the Bodie Hills. The main thrust of the purchase is the old Bodie Mining District and to be more specific "GOLD." (Continued on page 7.)



Bodie Townsite showing area of proposed open pit mining.

**THE CALIFORNIA
STATE PARK RANGERS
ASSOCIATION**

A professional association.

Office of the
Executive Manager
Doug Bryce
P. O. Box 28366
Sacramento, CA 95828
(916) 383-2530

PRESIDENT
Don Murphy
(714) 780-6222

VICE PRESIDENT
Mike Whitehead
(415) 435-1915

TREASURER
Kathy Franklin
(209) 339-4637

DIRECTORS
Donna Pozzi
Bud Getty
Patricia Posner

NEWSLETTER
Doug Bryce, Editor
Susan Ross, Ass't. Editor

CAL RANGER
Ed Stuckrath, Editor
(714) 780-6222

For additional information on
the association, write the
Executive Manager.

PRESIDENT'S MESSAGE

During the last part of the month of January I attended the Planning and Conservation League (PCL) symposium in Sacramento. For those of you who may not know what PCL is, it is a consortium of environmental groups directed by Jerry Meral. But this not a message about PCL, rather it is a reflection on my impression of the environmental movement. Represented at this symposium were groups as prominent as the Sierra Club and as obscure as the Friends of the Grass. There were wide-ranging views expressed as well. From the extreme of not allowing another human soul to immigrate to California, all the way to cutting off all water to Southern California. People were all attempting to save, preserve, control, or restore some aspect of the environment. Finally, I had to ask myself from whom or from what were they trying to save the environment. To what end was this cry for preservation, control, and restoration. In other words, what are the motives behind these high-sounding ideals? Well, I soon found that the motives were as varied as the people attending the symposium. Some had bought homes high upon the proverbial and literal hill, and therefore wanted to "control" growth on ridgelines that would spoil their view. Others invoked great ancestral roots to the land going back at least to their grandparents to justify the need to "preserve" the mountain lion, and still others were sincere when they said they just loved the land because it was there and wanted to "save" it so that it would be there for their grandchildren. Then there was me. Why was I there? What were my motives? Let's see, I don't own a house on a hill. My ancestors have been in this country for four hundred years, but then the Native Americans have been here much longer than that. And like others, I too love the land, its wide open spaces, infinite beauty, and subtle messages that speak to my spirit. After hurting my brain trying to come up with a good reason for my being there, the light went on. Reason? What did all this have to do with reason? I did not reason myself into existence. I did not reason that I was inspired by the beauty of the ocean, or the grandeur of the Sierra, or the grace of the mountain lion. It had to do with what I am, and what we all are - a part of an environment that nourishes us, inspires us, refreshes us, comforts and cradles us within its magnificence.

Those of us who are employed by the Department of Parks and Recreation are stewards

(Continued on page 6.)

The **NEWSLETTER** (ISSN 0887-9176) is published by CSPRA, P.O. Box 28366, Sacramento, CA 95828.

The **NEWSLETTER'S** Editor is Doug Bryce; contributing editors and authors are as noted. Articles are welcome, 1000 words or less. All submissions become the property of CSPRA and may be edited without notice.

CSPRA-PRAC-LEAGUE CONFERENCE

March 7 - 10, 1989

Palm Springs Racquet Club

Maintaining The Integrity of Our Parklands - A Challenge For The Future

Activities

Desert Museum Tour

Facilities vs. Resources

**'Wheels of Change Rollin'
Down Our Trails'**

*Donald Douglass, President, International Mountain Bike Association
*Kery Kellogg, USFS
*Noel Wardell, DPR
*Ross Henry, DPR
*Tom Hofsommer - Sacramento Co Pks - Moderator

'Home Is Where The Park Is'

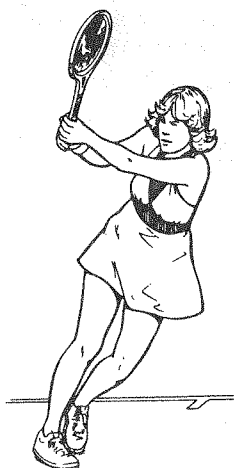
*Lucia Ruta, Chief Park Ranger, Los Angeles
*Bob Vilmur, Homeless Project Coordinator
*Steve Treanor, DPR
*Al Mendoza, City of Riverside Police Dept
*Donna Pozzi, DPR

The San Francisco Bay Area Ridge Trail - Slide Show

*Dennis Danielson, Mid-Peninsula Open Space

Tennis & Golf Tournaments

Banquet and Dance with Excellent Live Band



Activities

Marketing, Merchandising, and Financial Management for Park Visitor Centers

*Stephen Cogil, President
SLC Enterprises, Chicago

Publications Exhibit

Living Desert Educational Field Trip

Talking Hands - Sign Language For Those Working With The Public

*Suzanne Cromlish, President
of Talking Hands

Indian Canyons Educational Tour

Banquet Speaker

*Frank Bogard, Southern Director of the California State Parks Foundation and former mayor of Palm Springs.

Palm Springs Aerial Tramway Ride, Spaghetti Dinner, and Star Gazing Talk.

CSPRA Charter Member Recognition

Raffle Prizes

Balloon ride, motel stay, etc

NOTE: Late Registration will not begin until March 2, 1989

Henry R. Agonia, Director

January 17, 1989

Dear Director Agonia,

The CSPRA Board and membership are very concerned about the threat to Bodie State Historic Park. As you know, Galactic Resources proposes to strip mine the ridge directly above Bodie. This activity will destroy Bodie's distinctive setting and threaten to flatten the town's fragile structures through vibration from mining activity such as blasting and heavy vehicle traffic.

We believe Bodie is unique. It is the best preserved and most authentic western gold mining town in the world. The department bears a heavy responsibility for its protection and preservation.

The broad outlines of the Galactic threat have been well known for six months, and we are concerned at the lack of vigorous departmental action to counter it. It is imperative that the alarm be sounded and the public be informed as to the situation and potential threats. It is imperative that measures be taken to protect Bodie and its historic mining district, utilizing all means at our disposal.

The CSPRA Board of Directors has designated a task force to work on the Bodie mining threat, utilizing the modest resources at our command. As part of our effort to generate public awareness about the proposed project, we will be sending the attached letter to other organizations and concerned individuals throughout California and across the nation. We would like to meet with you to learn your intentions, so that we can join forces where appropriate and avoid duplication of effort. We will be phoning to schedule a meeting in the first week of February.

We know you share our concern about the future of Bodie and hope that you will leave no avenue of defense unexplored. We look forward to a productive meeting with you.

Sincerely,
Donald Murphy
President

DRAFT

Dear _____

Please join us in opposing an open pit gold mining project which seriously threatens Bodie State Historic Park, a National Historic Landmark. Recently, Galactic Resources, Ltd. of Vancouver, Canada bought all the private mining claims on the ridge above the historic Mono County ghost town. If it looks profitable, the company will excavate up to 3 square miles to a depth of 200 - 400 feet.

Bodie is the best preserved, most authentic western mining town in the nation. It has survived fire, weather, and other threats for more than a hundred years, to be enjoyed as one of California's premier state parks. Bodie's setting in a natural basin, high in the eastern Sierra, is part of the ghost town's dramatic appeal.

A disturbing indication of the company's environmental attitude is contained in an investment research report by Kitcat, Aitken & Company distributed by Galactic to prospective investors. This report states that if a cyanide leach plant is not permitted by California, "Galactic has a contingency plan whereby ore could be transported, by conveyor, across the Nevada state line where the environmental lobby is not so strong."

Now is the time to be heard. If you love the Sierra and its past, our history and heritage, let your feelings be known. If you want to help, write us and we will provide further information. Mobilize your organization through its newsletter. Write letters to the Governor, your local legislators, and the Mono County Board of Supervisors who will be issuing the mining permits. (We'd like copies for our records, too.) Tell everyone you know of the threat to Bodie. Funds to carry on the fight are also needed.

People love Bodie, and working together, we can save it. Please help.

CSPRA-Bodie Committee
P. O. Box 28366
Sacramento, CA 95828

CSPRA 1988-89 BUDGET

	1987/88	87/88 actual	1988/89	1989/90
INCOME				
Dues	26,450	28,029.50	38,531	40,635
Sales	100	360.56	100	200
Conference Profit	4,000	9,461.96	1,000	2,000
Interest		176.45	150	225
Miscellaneous		119.68		
Reserve from previous year	2,050	2,344.84	2,000	4,081
TOTAL	32,600	40,492.99	41,781	47,141
EXPENDITURES				
PROGRAM SERVICES				
CAL RANGER	4,000	3,285.56	3,000	3,000
NEWSLETTER	4,000	3,518.12	4,800	7,000
Scholarships	1,000	720.35	1,000	2,000
Whitehead Scholarship	1,200	650.00	1,200	650
Retirement Recognition		455.08	300	450
PCL	2,500	3,000.00	2,500	2,500
Conference	3,000	7,853.96		2,000
Regional Meetings				900
MANAGEMENT HEADQUARTERS				
Executive Manager	2,400	2,400.00	4,800	4,800
Office Supplies	500	868.49	700	900
Equipment Repairs	250	344.36	250	300
Phone	500	211.99	300	360
Printing/Copying	850	494.28	850	600
Postage	900	1,435.09	900	1,200
Manager Travel			1,200	
Equipment Purchase			1,000	1,500
Taxes		21.88		
Bank Charges		28.80		
Miscellaneous		780.21		
BOARD				
President	2,400	1,311.86	2,800	2,500
Travel	1,300	246.55	2,400	1,500
Phone	700	310.68	700	500
Postage	200	50.10	200	200
Office Supplies	200	5.37	200	200
Miscellaneous		46.01		
Commission Liaison			1,200	1,200
BOARD MEETINGS				
	2,800	4,103.61	3,000	4,000
COMMITTEES				
	1,200	589.67	2,000	2,000
FUNDRAISING				
	800	2,109.89	2,400	2,400
TOTAL EXPENDITURES	30,720	34,841.91	37,700	42,660
RESERVE TO NEXT YEAR	1,880	5,651.08	4,081	4,481

OLD SACRAMENTO

(Continued from page 1)

Soon after the council's approval the Save Old Sacramento (SOS) Committee was formed and began legal and ballot initiative efforts to overturn the project. By January 1, SOS had gathered over 30,000 signatures, more than enough to qualify for the city ballot. Early on, CSPRA supported the SOS effort and approved \$250 to help fight the battle.

The recent agreement would do the following:

- *By February 26, the City Council must formally adopt the initiative which requires that future development in Old Sacramento be similar in scale, materials, and architectural style to the rest of Old Sacramento.

- *The height of the building will not exceed 75 feet, except that a portion of the building fronting on Capitol Mall may reach 105 feet to allow the developer to make what he termed "an architectural statement." The developer has agreed not to use reflective glass and will use compatible materials and treatments on that part of the building that faces Old Sacramento.

- *The developer and SOS will drop their respective lawsuits.

Thanks to CSPRA and others, Old Sacramento's Gold Rush atmosphere and its architectural integrity are preserved for now and the foreseeable future. 🍏

PRESIDENT'S MESSAGE

(Continued from page 2)

of our most precious possession, our home, our earth, and the specific parks of which we have charge. Our motive for being part of the environmental movement is pure and simple: to protect our earthly heritage from its greatest enemy, ourselves. 🍏

BOARD MEETING HIGHLIGHTS

The Board met at the Sacramento Airport on February 4 and took the following actions.

BUDGET

Discussed 1989-90 budget as prepared by Franklin and Bryce and decided to present it to the membership at GEC as it was prepared.

A F D C HIRING

Discussed effects of A F D C hiring on the State Park image. It was decided that this issue should be recommended as a topic for the District Superintendents' meeting this fall. This would allow for broader input and more direct action.

SCHOLARSHIPS

Many recipients of CSPRA scholarships are ignoring the requirement of preparing an article for the newsletter based on their training experience. It was decided that 50% of the scholarship would be withheld until submission of the newsletter article.

1990 CONFERENCE

The Holiday Inn in Chico was chosen as the site for the 1990 conference.

CONFERENCE EXPENSES

It was decided that all officers and board members would receive regular travel expenses for the full conference. Committee chairs will receive \$100 each to offset expenses of attending the conference.

BODIE MINING

It was unanimously voted to arrange with PCL to accept large donations of money for the Save Bodie committee and to allow an expenditure of \$2,000 to hire a law firm to gather information regarding the status of Galactic's activities at Bodie.

OHV LIAISON

Jeff Price was appointed as liaison from CSPRA to the OHV Commission and OHV user groups.

CSPRA OFFICE

PCL has inquired as to CSPRA's interest in sharing office space in a building they are planning to build. It was unanimously agreed that it was premature for us to be considering such a step.

FUND RAISING

Because of the increasing number of threats to the State Park System, we need more money to fund our involvement in these important issues. Each board member was asked to have several ideas for fund raising at the next meeting.

BRIDGE CROSSING

The City of Folsom is reportedly in favor of the next bridge crossing of the American River to be located at Lake Natoma at Folsom Lake SRA. The board requested Kathy Franklin to get additional information on the specific site, what impact it would have on the park, and what the alternatives are.

BODIE MINING

(Continued from page 1)

This district is located east of and adjacent to Bodie State Historic Park. We refer to this area as Bodie Bluff. (See diagram page 1)

Our first meeting with Galactic occurred in June of 1988. A spirit of concern for Bodie was expressed by all parties. An understanding was conveyed that we should work together as friends and neighbors. Efforts have been made on both parts to maintain friendly relations.

As mining companies go I understand that Galactic's reputation for environmental concerns is pretty good. Incidents have been few, albeit consistently of the same nature, the majority of which involve visual intrusions upon the historic setting we are attempting to present to the visiting public. Incidents of this nature continue after contacts have been made to correct the situation.

With county approval, an exploration phase is currently in progress. The overall picture involves continuing exploration until the fall of 1989, a one-year EIS process, followed by a 6-to-8 month construction phase beginning in 1991, and finally an operational phase. Everything after the exploration phase will depend on whether the gold reserves are economically feasible to mine.

To date three types of mining operations have been mentioned: 1.

Open Pit; 2. Terracing; 3. Underground. The open pit operation has been identified in the Bodie General Development Plan as an unacceptable resolution to

conflicts which may arise between mining interests and state park concerns. The terracing proposal would be equally as intrusive since one of the main locals for this type of operation is an old pit last operated by the Roseklip Mining Company in 1946 and is well within view of the townsite.

The only type of processing discussed has been identified as "heap leach cyanide." This process could have adverse affects on water quality in downstream areas and could get into the parks water system.. We have identified other areas of concern. They are, but are not limited to:

- *Noise and visual intrusions - an open pit mine adjacent to a ghost town will compromise the experience we are trying to provide.

- *Air quality could be compromised due to blowing dust.

- *Blasting could cause cracking of foundations and collapse of 100-year-old historic buildings.

- *There are approximately 12 structures and numerous archeological sites on Bodie Bluff which have been identified as part of Bodie's history.

- *The area is a known sage grouse strutting ground, a habitat for pronghorn antelope, a deer migration area, and a habitat for a colony of pika which occurs only on Bodie Bluff

We are told that the mining operation, if it takes place, will not adversely affect Bodie State Historic Park. With recent attempts to condemn park property this "proposal" should be considered a major threat to Bodie and the State Park System. 🍏

SAVE BODIE! UPDATE

by Donna Pozzi

At its most recent meeting, your CSPRA Board voted to pursue an unprecedented course of action: we will be hiring an attorney to help SAVE BODIE!

At this stage we are obtaining an assessment of the situation and assistance in developing our strategic plan. Whether or not we need additional legal services will be decided after the initial assessment and when we know more about Galactic's plans.

Other committee activities are geared towards generating public support for Bodie and opposition to any mining activity which would threaten park resources and values. We are sending out letters to other organizations and individuals, soliciting their involvement. Those who respond will receive additional mailings (fact sheets, news release, photos, suggested articles, etc.).

HOW CAN YOU HELP IN THIS EFFORT?

1. Please send names and addresses for our mailing list--environmental groups, history buffs, park friends--anyone who you might care about saving this very special ghost town.

2. We need money. The SAVE BODIE! project is going to cost more than CSPRA can comfortably afford. Please give and ask others for donations.

3. Call or write to Donna Pozzi if you're willing to help in other ways. The list of tasks to be done is growing rapidly!

4. Spread the word!

Donna can be reached at (916) 443-3359 - home or (916) 322-9587 - work. Write: 300 23rd Street, Sacramento, CA 95816. 🍏

SCHOLARSHIPS

A scholarship has been awarded to: Joe McCummins, State Park Ranger I, La Purisima Mission for \$200 to attend a living history conference. If you are interested in a scholarship see the article on page 4 of the Sep-

REGIONAL MEETINGS

A meeting was held in Eureka on January 26. It was attended by 15 persons and all said it was very worthwhile. Our next meeting will be in Santa Cruz on March 1 at the Henry Cowell Redwoods State Park visitor center from 7:00 to 10:00 PM. These meetings are for members, non-members, and spouses. Please come with your suggestion for and questions about CSPRA.

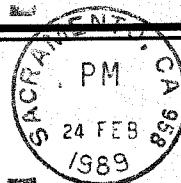
WELCOME TO CSPRA

We are glad to introduce these new members to our organization. CSPRA offers a forum for sharing ideas and concerns and a means of making an impact in the professional field of the ranger. There is a place for each of you here, and your commitment to CSPRA requires a commitment to you from this organization. Each of us by getting involved can help the other. Again, welcome to CSPRA. 🍏

Michael Brent Rominger, Pajaro Coast
Garth R. Tanner, Inland Region
Linda W. Lindert, Headquarters
Heather Fargo, Local Assistance

Willene Mary Quiroz, Santa Monica Mtns
Robert E. Baxter, Inland Region
William C. Dillinger, Retired

California State Park Rangers Association
P. O. Box 28366
Sacramento, CA 95828-0366



Mail to:

JOHN D. MOTT
116 TREETOP DRIVE
SANTA CRUZ CA 95060