

# NEWSLETTER

california state park rangers association

VOLUME VI NUMBER 10

SEPTEMBER 1989

## CALL FOR PAPERS

At the 1990 conference we will again be having a session for the presentation of formal papers. Each paper should be based on park oriented issues. The papers must be relevant to park professionals (paid or volunteer) in any of several disciplines including, but not limited to, resource management, interpretation, and law enforcement.

Papers should deal with new ideas or approaches to problems that have statewide significance and implications. They should be technical in nature but written for a lay audience and should be accompanied by a bibliography of references where appropriate. Papers should be no longer than eight typed, double-spaced pages. Black and white photos, graphs, charts, tables, etc., are welcome. Papers must be original unpublished material. The author must provide written consent to have the paper reproduced for publication (not for sale) in the Newsletters and Journals of the sponsoring organizations.

The author must include a one-paragraph biography which indicates his/her source of expertise and also provide a phone number and address where they can be contacted.

Authors of papers selected for presentation will be notified no later than February 1, 1990. Papers must be received by December 31, 1989 by Doug Bryce.YYY

## PIT BULLS AT BODIE?

by Nina Gordon

What do pit bulls have to do with Bodie? We found out at the highly successful fund-raiser held on Saturday, April 19 at Sutter's Fort. Approximately 80 people showed up for an evening of laughter, creative prose, and educational imbibing. Bud Getty started off the evening as the emcee with his usual wit. He also drew a winning ticket in the raffle which included raft trips (donated by "Friends of



the River" and "California River Trips") and gift certificates for cruises on the River City Queen. The latter prize was won by the emcee himself. (Be sure to wave to him as he cruises on by!)

We were then treated to Carl  
(Continued on page 3)

## LETTER TO THE DEPARTMENT

Dear Mr. Agonia,

On behalf of the California State Park Rangers Association (CSPRA), I would like to express our deep concern over two major issues involving the Ano Nuevo Interpretive Association:

- 1) The removal of public monies and assets from Ano Nuevo State Reserve;
- 2) The attempt by the Association Board of Directors to enter into an inappropriate agreement.

The Ano Nuevo Interpretive Association (ANIA) has chosen *on their own initiative* to terminate their enabling contract with the Department effective August 25, 1989. ANIA is no longer operating under the legal guidelines of a cooperating association nor is it following the provisions of the Articles of Incorporation. Upon terminating their contract, the ANIA Board of Directors have absconded with considerable public assets. These assets include over \$175,000 of public funds (including two memorial funds); four computers; two printers; a 60-foot trailer; a copying machine; an irreplaceable slide, video, and reference library, and docent records essential to the volunteer program.

These funds were generated and the items purchased under the auspices of a cooperating association with the understanding that these funds and assets would be returned to the park units to be used  
(Continued on page 3)

**THE CALIFORNIA  
STATE PARK RANGERS  
ASSOCIATION**

A professional association.

Office of the  
Executive Manager  
**Doug Bryce**  
P. O. Box 28366  
Sacramento, CA 95828  
(916) 383-2530  
\*\*\*\*

**PRESIDENT**  
**Don Murphy**  
(714) 780-6222  
\*\*\*\*

**VICE PRESIDENT**  
**Bud Getty**  
(408) 335-9145  
\*\*\*\*

**TREASURER**  
**Kevin Joe**  
(707) 877-3592  
\*\*\*\*

**DIRECTORS**  
**Donna Pozzi**  
**Jeff Price**  
**Jennifer Rodriguez**  
\*\*\*\*

**NEWSLETTER**  
**Doug Bryce, Editor**  
(Vacant), Ass't. Editor  
\*\*\*\*

**CAL RANGER**  
(Vacant)  
\*\*\*\*

For additional information on the  
association, write the  
Executive Manager.

## **SEMINAR REPORT - NATURE STUDY FOR ELEMENTARY TEACHERS**

**By Carl A. Nielson, Ranger I**

My wife, a first grade teacher at Gustine Elementary, and I attended "Nature Study for Elementary School Teachers," a five day seminar put on by the Yosemite Association [24-28 July, 1989]. The instructor was the very personable Michael Ross, who has taught natural history classes for the Association for over ten years. Michael has authored and illustrated Cycles, Cycles, Cycles, What Makes Everything Go?, and Faces in all Kinds of Places -- A Worm's Eye View of Flowers, all children's books and all published by the Association.

All but two of the fourteen seminar participants were teachers, but the course was very appropriate for park rangers. The goal of the seminar was to help teachers nurture and direct their own curiosity (as well as that of their students) about nature. And what better classroom than Yosemite's Tuolumne Meadows?

Each day the class investigated a different subject, followed by a discussion of teaching strategies and activities. The subjects in order of presentation: "bugs", wildflowers, birds, geology, and pond life. Each day was educational and full of adventure.

It almost seemed as if Michael arranged the natural world to make special appearances to illustrate his points. Immediately after discussing how birds utter different notes, including calls that announce the presence of danger, we heard a number of short, loud bird notes. Seconds later a low flying Sharp-shinned hawk buzzed our party. Another exciting moment was witnessing the transformation of a damselfly from the nymph stage to adult on pond life day.

Michael's teaching philosophy stresses student observation and discovery, the use of multiple directions/disciplines in the learning process, depth (vs. breadth), pair and group work (sharing), story-telling and use of literature, and vocabulary development. We often drew what we studied, be it an insect or a rock. Drawing initiates involvement, observation, discovery, and detail, and serves as a base for continued learning.

The seminar was very practical for my interpretive role as a ranger, but also further inspired my personal interest in the natural world, for it was a week of discovery for me. Michael's seminar was the third seminar I've taken through the Yosemite Association. For more information on the Association, write to them at P. O. Box 230, El Portal, CA 95318.¥¥¥

The **NEWSLETTER** (ISSN 0887-9176) is published by CSPRA, P.O. Box 28366, Sacramento, CA 95828

The **NEWSLETTER'S** Editor is Doug Bryce; contributing editors and authors are as noted. Articles are welcome, 1000 words or less. All submissions become the property of CSPRA and may be edited without notice. **THE DEADLINE FOR ARTICLES IS THE 15TH OF THE MONTH PRIOR TO PUBLICATION.**

# BODIE

(Continued from page 1)

Burger's original and very humorous songs. Carl also had a few consciousness-raising songs on Bodie itself. It was a delight to hear him again! Carl's dedication is evident by the effort he puts into writing and performing his music. He is also donating the proceeds of his tapes to the SAVE BODIE! committee. In addition, Carl changed his vacation plans to be available for the fund-raiser.

Ira Bletz gave new meaning to the term "armchair traveler." As our knowledge of international breweries increased, so did the number of empty beer bottles on the tables. Each type of beer was accompanied by a story or further insight into the art of beer-making and tasting. Ira also gave his now-famous Lone Star saga.

A special exhibit on the breweries and history of Bodie was provided by Gary Reinoehl and Frank Lortie.

Special Bodie designer T-shirts are here now! Available in blue or white, the words SAVE BODIE! are rising from a rendition of the historic buildings. Reports are pouring in that the T-shirts are guaranteed conversation starters. They are available by mail. (See mail order form in the newsletter)

Bodie supporters came from as far north as Mendocino (Dave Bartlett), as far south as Anza Borrego (Peggy Hurley), and Brad and Suzanne Sturdivant came over from Bodie.

Many thanks to everyone who attended the event. And of course Bud, Ira, Carl, Gary, and Frank, and the many volunteers who made it possible. Special thanks to Patty Posner as the chief orga-

nizer. Also thanks to Donna Pozzi for her help, Betty Paris (registration), Nina Gordon (publicity), Kathleen Franklin and Carolyn Edwards (T-shirts), Dorene Clement (editing), Don Napoli and Kevin Joe (accounting), Fran Sargent (tables and chairs), John Arnold (computer assistance), and the many other volunteers at the event including Bill Dillinger, Robert and Temple Harris, Dina Leon, Terry Ramirez, and Chris Riojas. And special thanks to the Sacramento District ranger and maintenance staff for their support and assistance.

Over \$3,300 was raised in the fund-raiser of which \$2,100 was profit for the SAVE BODIE! Committee. It was a very successful evening. If anyone wants to hold a fundraising event to help save Bodie State Historic Park from the encroaching threat of mining, please contact Donna Pozzi at (916) 443-3359.

The question still remains, what do pit bulls have to do with Bodie? You will have to buy Carl Burger's latest tape to find out.!!YY

## LETTER TO DIRECTOR

(Continued from page 1)  
for interpretive and educational programs.

The enabling Articles of Incorporation clearly dictate the dispersion of the assets: "Upon the dissolution or winding up of this corporation [ANIA] its assets remaining after payment of, or provision for payment of all debts and liabilities of this Corporation, shall be distributed to the State of California to be used for purposes of the State Park System."

The Department is proceeding with the docent/interpretive pro-

gram to provide this service to the public. The vast majority of active docents (120) have elected to remain at the Reserve in the docent program. The funds generated, which ANIA retained possession of, were meant to support such programs.

The second issue of concern is the contract proposed by the ANIA Board. The proposed contract by this private organization is not eligible for consideration for the following reasons:

### 1) Preclude another cooperating association.

The exclusive sales provision in the agreement would make it very difficult for another cooperating association to be started at the Reserve since the bookstore sales would be the main source of revenue. There are docents dedicated to starting another cooperating association for the purpose of sponsoring the docent and interpretive programs through funds generated from the visitor center bookstore. Any consideration of this proposal would be a setback to these dedicated docents.

### 2) Conflict of interest.

This service (book-sales) is already being provided by the Department and private enterprise throughout the San Mateo Coast District. The Department has purchased over \$1,000 of sales items and arrangements have been made for the staffing of the bookstore and visitor center to provide service to the general public. The Pescadero Marsh Docents (under the direction of state park staff) have been selling publications for over a year from the Wetlands Van (a trailer which also contains an extensive interpretive program. As with any concession, the Department should investigate the impact on private business selling like items. Bookstores in Half Moon Bay and San Gregorio provide interpretive publications in (Continued on page 4)

# LETTER TO DIRECTOR

(Continued from page 3)

these two locations.

## 3) Not following concession guidelines.

ANIA is assuming the benefits of a cooperating association (not subject to the bidding process, exclusive sales rights, ability to operate in a state park although they are no longer eligible, by their own choosing, to exist as a cooperating association. Neither does the present proposal fall within the legal guidelines for concessions.

The proposed contract states that the ANIA Board in its "sole discretion" shall establish all provisions for operation and that the Board "shall be entitled to retain all revenues derived from operation thereof." This arrangement would be of no benefit to the people of California. The ANIA Board can apply for an agreement with the Department through the concessions office.

CSPRA feels very strongly that the Department should take a firm stance to ensure the professionalism of the Department and to ensure a constructive relationship between the Department and cooperating associations. The public assets must be returned to the District to be used directly for interpretive and educational programs as intended. Serving the public through educational and interpretive programs takes priority over the sale of books.

The mutually supportive relationships of cooperating association and state parks must not be jeopardized by allowing a former cooperating association to retain public funds and enter into an inappropriate agreement. CSPRA strongly urges you to take the following steps to maintain the high

quality of interpretive programs and operations.

••As of 8/25/89, the ANIA is no longer meeting the legal requirements under which they were formed, and as such the assets should be disposed of as stated in the articles of incorporation.

••Ensure that ANIA returns all revenues (as of 8/25/89).

••Ensure that all expenditures as of 8/25/89 conform with the contract under which ANIA operated as a cooperating association.

The Department can facilitate this through the following actions:

1) **Have an audit conducted of the former Association** (this action was authorized in the contract for the purposes of evaluating the benefits occurring to the State Park System from its cooperation with the Association);

2) **File for an involuntary dissolution of the Association** with the Attorney General (Office of Charitable Trust) since ANIA is no longer meeting the purposes of the organization by operating as a cooperating association.

••No future negotiations should be made with the Board until all the assets have been returned to the State Park System, as mandated.

••Any future proposals by ANIA to the Department should be viewed under the guidelines of a concessionaire agreement and not as a cooperative association, and as such should be subject to the legal provisions for concessions.

The decisions made in regards to the situation at Ano Nuevo will be significant. We urge the Department to take action quickly be-

cause the ANIA Board is currently expending the public assets in a manner inconsistent with the purpose intended in the contract under which these funds were generated.

Sincerely,

Donald Murphy, President  
CA State Park Rangers Assoc.

## HONORARY MEMBERSHIP NOMINATIONS

Do you know someone who has made an outstanding contribution to the California Department of Parks and Recreation, the California State Park System and the objectives of the California State Park Rangers Association? If so, please consider recognizing that individual formally for their accomplishment through nomination for Honorary membership in the California State Park Rangers Association. The Board of Directors will be acting on all nominations in January, 1990.

Please give careful consideration to candidates deserving of this special recognition and send your nominations to:

Honorary Member Committee  
Mary R. Wright  
20 Custom House Plaza  
Monterey, CA 93940

Nominations for honorary members should include the following information:

1. Nominee's name, address, phone number, and brief resume.
2. Nominating CSPRA member's name.

3> The contribution to the California Department of Parks and Recreation, State Park System, and/or California State Park Rangers Association. Particular emphasis should be given to the regional or statewide nature of the contributions.

The winning candidate will receive a beautiful plaque, all rights and privileges of Association membership except the right to vote, and formal recognition at the 1990 Conference Banquet next spring. YYY



# SAVE BODIE!



## The Bodie Experience...worth more than gold

Support the "SAVE BODIE" efforts  
with your own special edition T-Shirt

\$12.50 each in either blue or white  
100% cotton (pre-shrunk)

Send check and order form to : Fred Soderlund

#1 El Capitan State Beach Road  
Goleta, CA 93117

.....  
Make checks payable to: CSPRA

Name and Address

---

---

---

---

---

| Qty | Color | Size | Price Each | Amount |
|-----|-------|------|------------|--------|
|     |       |      |            |        |
|     |       |      |            |        |
|     |       |      |            |        |
|     |       |      |            |        |
|     |       |      |            |        |
|     |       |      |            |        |

Sizes: Medium, Large & X-Large

(Price includes sales tax)

Shipping & Handling

Add 1.00 for each additional shirt

TOTAL

2.50

|      |
|------|
| 2.50 |
|      |
|      |



## HELP WITH THE 125 RANGER ANNIVERSARY

Assistance is needed in all areas of the 125 Year Anniversary effort. Just some of the areas are research, writing, computer work, contacting retired Rangers and families of deceased Rangers, developing promotional items and help in planning and putting on the big event.

Would you like to Help? Please fill out/return this form and the the 125 Year Committee will contact you.

Name: \_\_\_\_\_

Address: \_\_\_\_\_

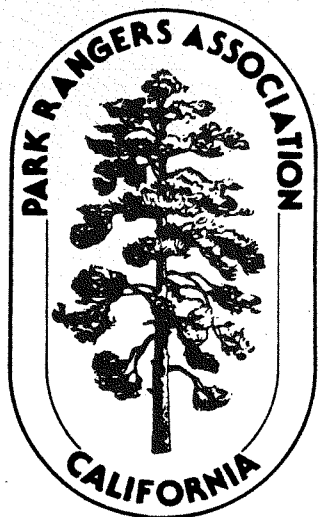
City/State/ZIP: \_\_\_\_\_

Phone: \_\_\_\_\_

### Areas of interest (check box or indicate below):

- |  |   |
|--|---|
| <input type="checkbox"/> History of First Ranger Galen Clark             | <input type="checkbox"/> Research early Park Commission minutes         |
| <input type="checkbox"/> 1st Wardens, Big Basin 1902-28 - Denzil Verardo | <input type="checkbox"/> Research News & Views 1940-60                  |
| <input type="checkbox"/> First Custodians, Parks & Monuments before 1928 | <input type="checkbox"/> History of park law enforcement - Mike Kania   |
| <input type="checkbox"/> History of the Ranger Specs - Mike Lynch        | <input type="checkbox"/> Philosophy of park ranger work - D. Verardo    |
| <input type="checkbox"/> Research DPR employee picture file, West Sac.   | <input type="checkbox"/> Early NPS Rangers                              |
| <input type="checkbox"/> Medal of Valor recipients - Mike Dragoo         | <input type="checkbox"/> History of the Ranger name - Juv. Ortiz        |
| <input type="checkbox"/> Ranger achievements off the job                 | <input type="checkbox"/> 125 Yr. Commemorative Gun - Ken Wilbur         |
| <input type="checkbox"/> Women Rangers - Mary Pass, et al                | <input type="checkbox"/> Contact retired Rangers and families for info. |
| <input type="checkbox"/> Uniforms, patches & badges - Mike Lynch         | <input type="checkbox"/> Unit Ranger Histories for pre-1947 parks       |
| <input type="checkbox"/> First Rangers in parks 1928-1947                | <input type="checkbox"/> Photo Day in the Life of Rangers, on 7/4/90    |
| <input type="checkbox"/> Other (please specify): _____                   |   |

**Return to: Susan Ross, 737 Virginia Dr., Rio Vista, CA 94571**



*Presents:*

## FIELD INTERPRETATION AND THE NEW PARK VISITOR

*1989 Autumn Workshop*

Lucy Evans Baylands Interpretive Center, Palo Alto California  
Tuesday, October 31 and Wednesday, November 1, 1989

The Park Rangers Association of California invites you to attend this informative two-day workshop in the beautiful San Francisco Bay Area. This workshop is designed to provide participants with fresh perspectives on field interpretation and changing demographics in parks throughout California. Both topics will provide operational information which is valuable to park personnel at varied levels.

Specific sessions scheduled include:

- Changing Demographics in California Beyond the Year 2000
- A Panel Discussion on Dealing With Varied Ethnic Populations in Parks
- Cross Cultural Land Ethics
- Communication with Urban and Multicultures
- Urban Park Work Programs
- Hands -On Field Interpretation

The keynote speaker for this exciting workshop will be **William Penn Mott**, former director of the U.S. National Park Service. The closing speaker will be **Ron Russo** from the East Bay Regional Park District.

A continental breakfast will be provided prior to each day's session. A catered lunch will be provided on the first day of the workshop.

Workshop space is limited to the first 75 registrations received by PRAC, so your prompt reply is vital.

| Workshop Fee Schedule: | By 10/20/89 (Lunch Guaranteed) | After 10/20/89 (No Lunch Guarantee) |
|------------------------|--------------------------------|-------------------------------------|
| PRAC/CSPRA Members     | \$30.00 per person             | \$35.00 per person                  |
| Non-members            | \$40.00 per person             | \$45.00 per person                  |

For More Information Contact: Doug Bryce, (916) 383-2530

### PARK INTERPRETATION AND THE NEW PARK VISITOR

*1989 PRAC Autumn Workshop*

#### REGISTRATION FORM

Name: \_\_\_\_\_ Phone: \_\_\_\_\_

Address: \_\_\_\_\_ City: \_\_\_\_\_ Zip: \_\_\_\_\_

PRAC/CSPRA Member: By 10/20/89 \$30 x \_\_\_\_ = \$35 x \_\_\_\_ =

Non-member After 10/20/89 \$40 x \_\_\_\_ = \$45 x \_\_\_\_ = TOTAL: \$ \_\_\_\_\_

**Make Checks Payable To PRAC**

**Mail Checks To: PRAC, P.O. Box 28366, Sacramento, CA., 95828-0366**

# CHICO CONFERENCE - March, 6 - 9, 1990

Speakers

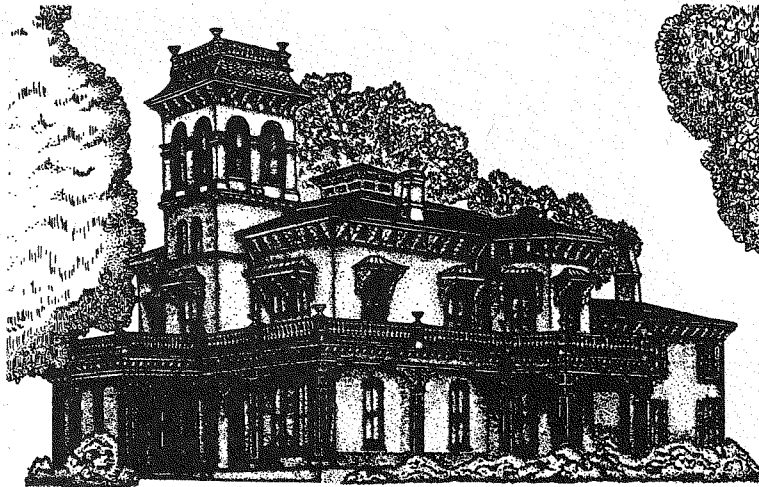
Presenters

Debate & Discussion

Panels

Papers

Meet with Peers



**Tour:**  
Bidwell Mansion  
Bidwell Park  
Oroville V. C.  
Oroville Dam  
Fish Hatchery  
Wildlife Refuges

**Golf**  
**Tennis**  
**Reception**  
**Banquet & Dance**

## NEW MEMBERS

We are glad to introduce these new members to our organization. CSPRA offers a forum for sharing ideas and concerns and a means of making an impact in the professional field of the ranger. There is a place for each of you here, and your commitment to CSPRA requires a commitment to you from this organization. Each of us by getting involved can help the other. Again, welcome to CSPRAYYY

Edward A. Earl, Retired

Paul A. Swain, Orange Coast

David R. Pryor, Orange Coast

M. Terri Ramirez, Headquarters

Ron P. Schafer, Orange Coast

E. Carl Drake, Pendleton Coast

Retired Rangers  
and Playing  
Partners

Fall Golf Outing

October 17 - 19

Morro Bay Area

Contact

Chuck Lyden

142 Glenn Drive  
Folsom, CA 95630

by

10/1/89

California State Park Rangers Association  
P. O. Box 28366  
Sacramento, CA 95828-0366



JOHN D. MOTT  
116 TREETOP DRIVE  
SANTA CRUZ CA 95060