

NEWSLETTER

california state park rangers association

Volume VI Number 15

February 1990

Inside Save Bodie

by Donna Pozzi

Have you ever wondered what goes on behind the scenes of a major environmental battle? Do you envision a lot of political intrigue, big-time fund raising, media hype, slick lawyers, and constant excitement? Or perhaps what comes to mind is envelope-stuffing parties, late night trips to the post office, and other more grass-roots images...Lots of memories!

(Continued on page 4)

See You In Chico

March 6 - 9, 1990

(See Schedule on Page 3)

Dick Powers Passes

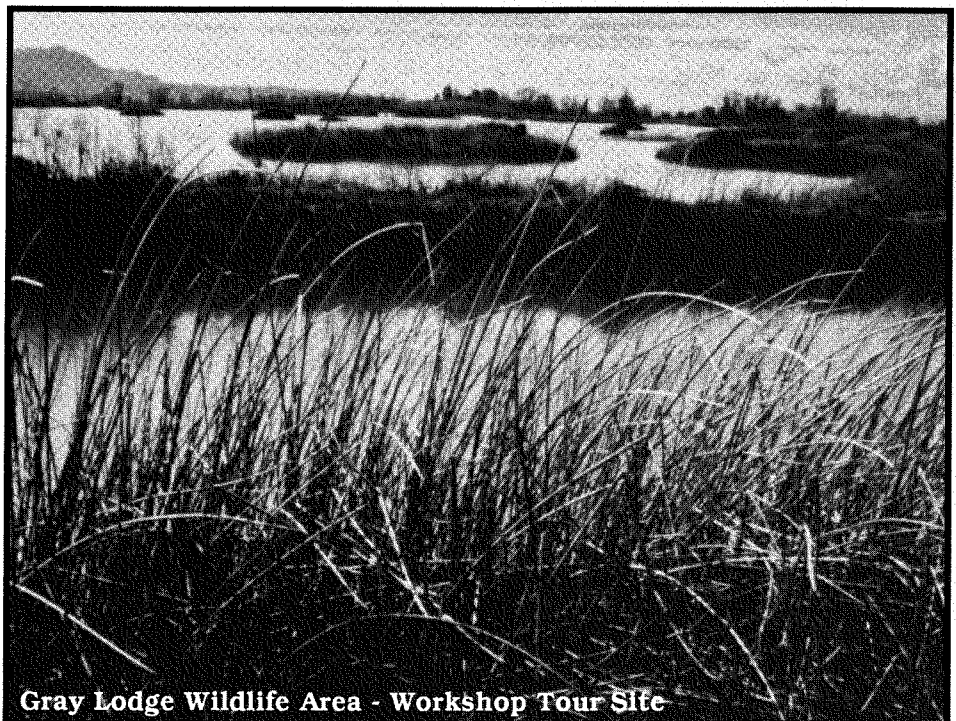
Dick Powers died on November 30, 1989 of heart failure. He had his fifth open heart surgery the day before. Prior to retirement Dick worked for DPR for many years. He and his wife Glenda were living in the Sacramento at the time of his death. He will be sorely missed by his many friends.

1990 Conference - Chico

by Rick LeFlore, Program Committee Co-chair

The Conference Programming Committee has worked hard to put together a comprehensive program that should appeal to the wide range of interests represented in our profession. If you haven't made plans to attend yet, make sure to register as soon as you can.

The general sessions feature acknowledged leaders in our field: keynote speaker Bern Shanks brings environmental credentials from high levels of state government; the panel discussion of interpretive defense tactics in the 1990s will reflect the views of accomplished professionals from four organizations; NPS ranger Mark Wellman will recap his world-renowned El Capitan climb and his efforts at bringing accessibility to Yosemite; finally, retired NPS Regional Director Howard Chapman will close the conference with his observations of threats to the parks from changing use patterns, visitation demands. (Continued on page 5)



Gray Lodge Wildlife Area - Workshop Tour Site

**THE CALIFORNIA
STATE PARK RANGERS
ASSOCIATION**

A professional association.

Executive Manager

Doug Bryce
Retired

P. O. Box 28366
Sacramento, CA 95828
(916) 383-2530

PRESIDENT

Don Murphy
Chino Hills Superintendent
(714) 780-6222

VICE PRESIDENT

Bud Getty
Sant Cruz Mtns Superintendent
(408) 335-9145

TREASURER

Kevin Joe
Mendocino District Ranger I
(707) 877-3592

DIRECTORS

Donna Pozzi
Supervisor of Interp. Programs
Jeff Price
Channel Coast Dist Chief Rngr
Rick LeFlore
Delta District Ranger II

NEWSLETTER

Doug Bryce, Editor

CAL RANGER

David Brooks & Doug Bryce

For additional information on the
association, write the
Executive Manager.

January 11, 1989

Honorable George Deukmejian
Governor of California
State Capitol
Sacramento, CA 95814

Dear Governor Deukmejian,

As you may be aware, the terms of State Parks and Recreation Commission members, Manuel Mollinedo and Marie Escola will expire on January 15, 1990. I have spoken with both commissioners and they have expressed a desire to continue their duties for another term. The California State Park Rangers Association (CSPRA) supports the reappointment of both Commissioners.

Throughout their terms Commissioners Mollinedo and Escola have shown tremendous dedication to their positions. They have contributed a great deal to the people of California through their efforts on the State Park Commission.

CSPRA has not always agreed with the positions taken by these two commissioners. However, we believe they have made well informed decisions; and they have been more than willing to listen to opposing viewpoints with an open mind.

Furthermore, they have consistently kept the integrity of the State Park System foremost in their minds. During their terms there have been numerous times that they have fought to protect the State Park System from inappropriate uses and degradations of special interest groups.

Their experience, dedication, and personal integrity entitles them to your continued support and confidence. We do not believe you will be able to find two people more qualified than Commissioners Escola and Mollinedo. CSPRA urges you to reappoint Commissioner Mollinedo and Commissioner Escola to the State Park and Recreation Commission at your earliest convenience.

Sincerely,

Donald W. Murphy, President
California State Park Rangers Association

cc: Mr. Henry Agonia, Director, Department of Parks and Recreation

(Editors note: The Governor's Appointments Secretary replied that they would consider our request.)

The **NEWSLETTER** (ISSN 0887-9176) is published by CSPRA, P.O. Box 28366, Sacramento, CA 95828.

The **NEWSLETTER'S** Editor is Doug Bryce; contributing editors and authors are as noted. Articles are welcome, 1000 words or less. All submissions become the property of CSPRA and may be edited without notice. **THE DEADLINE FOR ARTICLES IS THE 15TH OF THE MONTH PRIOR TO PUBLICATION.**

Pathways to the Twenty-First Century

CSPRA - PRAC - League Workshop

March 6 - 9, 1990

Holiday Inn, Chico, California

Schedule

Tuesday, March 6

10:00 am - 6:00 pm	Registration & Sales - Lobby of Holiday Inn
10:00 am - 5:30 pm	Oroville Tour, Meet in Lobby
12:30 pm	Golf Tournament, Meet in Lobby
1:00 pm - 5:30 pm	Tours: Bidwell City Park, Chico History, and Gray Lodge. Meet in Lobby
6:30 pm - 8:00 pm	Reception sponsored by State Parks Foundation.

Wednesday, March 7

8:00 am - 5:00 pm	Registration & Sales
8:15 am - 8:30 am	Welcome
8:30 am - 9:00 am	"California Parks in the 80's - Their Problems & Successes" - Henry Agonia
9:00 am - 10:45 am	Panel Discussion - "Views From The Front Lines"
11:00 am - 12:00 noon	Keynote Speaker - Bern Shanks
1:30 pm - 3:00 pm	"Cultural Computers"
	"Vanishing Resources: Good-bye, California"
	"Breaking The Barriers: Disabled Access in Parks"
3:30 pm - 5:00 pm	"Structures of History"
	"Bats: Not Just in Gotham City"; "Star Thistle - Bio Control Alternatives"
	"Creative Solutions to Resolving Trail Use Conflicts"
5:30 pm - 6:30 pm	Tour of Sierra Nevada Brewery
7:00 pm - 11:00 pm	Spaghetti Dinner, Square Dance, and Raffle sponsored by Mistix- CARD Hall

Thursday, March 8

8:00 am - 9:00 am	Registration & Sales
8:30 am - 11:30 am	Organization Meetings
11:00 am - 3:30 pm	Registration & Sales
11:30 am - 1:00 pm	Lunch Honoring Past Presidents
1:00 pm - 1:50 pm	"Time Thieves: Are They Getting Away With The Loot?"
	"Computers - Crashing Your Park and Resource Problems Away"
	"Creative Participation - Innovative Programs Between Parks and Other Groups"
2:00 pm - 3:00 pm	"Times Thieves..." continued
	"Musical Interpretive Moments"
	"Finding Funding for Fundamentals"
3:30 pm - 5:00 pm	"Pushing It To The Limit" - Mark Wellman
6:00 pm - 7:00 pm	No-Host Cocktails
7:00 pm - 9:00 pm	Banquet (Entertainment by Carl Burger)
9:00 pm - ?	Dance

Friday, March 9

7:30 am	Presidents' Breakfast
8:30 am - 11:00 am	Sales
9:00 am - 10:30 am	"The Indiana Jones Legacy: Interpretation of Cultural Resources"
	"Exhibit Planning Workshop - Beyond The 'Dymo' Label Maker"
	"Behind The Scenes - The Making of a Park Bond Act"
11:00 am - Noon	Closing Speaker - Howard Chapman
Noon	1990 Conference Committee Debriefing & Luncheon

**Help Build
Membership
And Support In
The California
Parks And
Conservation
Association**

**by Bernard Shanks,
President**

The California Parks and Conservation Association (CPCA) is a recently formed organization with a focus on the natural and historic areas set aside in the public lands we call parks.

The purposes of CPCA are to encourage the preservation of public lands for park purposes, and to promote and defend the intrinsic values of parklands within the California State Park System and other resource-based public parks in California.

While many citizen organizations exist to pursue various conservation and environmental goals, few focus exclusively on parklands. Those that do concentrate mostly on land acquisition and facility development, rather than on policy issues and the management and defense of natural and cultural resources. This is why a new, sharply focused citizen group is needed to deal with such problems as pressures from special interests with a profit motive. Special

interests with a profit motive force park administrators to make politically expedient decisions, rather than meeting the mandates of long-established park policies and laws. The way to stop them is to build a strong counter force to defend parks.

We know you, the dedicated park professional, understand all too well the threats we are concerned about, and we believe you and your friends are also concerned. That is why we are asking you to assist us. Working together, as concerned citizens and park professionals, we can make a difference and preserve the quality and value of California's parklands. Please help us pass the word.

If you would like additional information and know of others who share our concerns, please use the membership envelope we have enclosed for your convenience to contact us.

INSIDE SAVE BODIE!

(Continued from page 1)

What's made SAVE BODIE! so special (and what gives us such a tremendous advantage over the "other side") is our people power. What we're doing has touched and motivated people who have never before gotten involved with any kind of issue or cause.

We've also attracted some well-seasoned veterans. I want to share some of our stories with the rest of CSPRA.

It really hit me this past Christmas that SAVE BODIE! had an "identity" when we started to receive Christmas cards! It had never occurred to me to send cards to an organization before, but we were on some peoples' card list. In one case each member of the family had signed the card. Some enclosed money. One sent a donation that was intended to be a gift for a friend -- he had specified that was what he wanted instead of other presents. SAVE BODIE! T-shirts were a big hit as gifts. Thanks to the efforts of Fred Soderlund (Gaviota Ranger) and his family, dozens of our shirts were delivered in time for holiday gift-giving.

Last fall Doug Bryce and I helped a man with a special birthday surprise for his wife. He wanted to purchase a life membership in SAVE BODIE! in her name. I told him we hoped we wouldn't need SAVE BODIE! for the rest of our lives so weren't set up for life memberships. A CSPRA life membership really wasn't what he was looking for. Working with Brad Sturdivant (Bodie Ranger), we signed the woman up for a life membership in Friends of (Continued on page 5)

CONFERENCE

(Continued from page 1)

and political impacts on the decision-making process.

The educational tracks cover cultural resources, natural resources, and operations issues from experts in their respective fields. From interpretive archaeological digs through vanishing riparian woodlands, to the making of a park bond act, participants will find a wide range of opportunities to gain new information and ideas.

In addition to all of the above, several special tours and social activities have been lined up to round out the conference - it's shaping up to be one of the best yet!

Inside Save Bodie

(Continued from page 4)

Bodie, the cooperating association. All of this was conducted by leaving cryptic messages on answering machines so as not to spoil the surprise for the wife. Her birthday present to herself, unbeknownst to her husband, was a very generous donation to CSPRA!

Our retired members of CSPRA have really come through with donations, letterwriting, and helping spread the word. I think it has great impact when these well-respected professionals speak out. Ed Dold-

er, living on Maui, has been very supportive of our efforts. Ed was Chief of the Division of Beaches and Parks when Bodie was acquired. Thank you for all your help, Ed!

Bodie has also inspired those with creative talents. We have been approached by artists and countless photographers -- even poets. Retired Sierra Area Manager, Carl Anderson, sent his epic **My Bad Bodie Ghost**. And of course, Carl Burger has two clever and funny Bodie songs on his latest tape "Lip Service."

Personally I've enjoyed some memorable moments. Because of the media attention, I've been reunited with long-lost friends. In one case mail was forwarded to me by the dedicated staff of another organization; my old friend had written me in care of the Mono Lake Committee. I believe there have been so many heartwarming experiences because of the kind of organization we are and because of the love people share for Bodie. The need to fight to protect Bodie has created an enormous challenge for all of us. We're proving we can handle it.

Board Meeting Highlights

Treasurer,s Report Kevin reported that we have approximately \$15,000 in the bank with \$10,000 of that

being funds donated for SAVE BODIE!

125th Anniversary Committee Don Murphy has joined with Susan Ross to represent CSPRA on this Committee. Activities planned include a Photo Essay on "The Day in the Life of a Ranger", a press conference in April of 1991 to kick-off the celebration, and a conference on October 1 - 3. The conference will include a "park family" picnic probably at Marshall Gold Discoverer SHP.

Ski Team It was decided by the board that CSPRA will support the ski team at the Police Winter Olympics by donating \$100 to them.

President Murphy will send a letter to Director Agonia and the Attorney Generals office regarding our opposition to the lawsuit and other activities by the Mount Diablo Park Committee against the Department regarding the General Plan process at Mount Diablo.

Bud Getty will contact Roberto Vellanoweth suggesting that park philosophy be included on the agenda of the concessionaires' meeting.

Next Meeting - 3/8/90, 0830, Chico Holiday Inn.

▲▲▲▲▲▲▲▲▲▲▲▲▲▲▲▲

CSPRA 1990-91 Budget

	1988/89	1988/89 actual	1989/90	1990/91
INCOME				
Dues	38,531	39,484	40,635	40,000
Sales	100	45	200	100
Conference Profit	1,000	651	2,000	0
Interest	150	388	225	600
Donations		5,236		
Miscellaneous		950		
Reserve From Prev Year	2,000	5,707	4,081	4,688
Bodie		5,175		
Disaster Relief				
TOTAL INCOME	41,781	57,636	47,141	45,388

EXPENDITURES

PROGRAM SERVICES

CAL RANGER	3,000	32	3,000	4,000
NEWSLETTER	4,800	6,856	7,000	8,000
Scholarships (For Members)	1,000	1,283	2,000	2,000
Whitehead Scholarship	1,200	-0-	650	650
Retirement Recognition	300	582	450	450
PCL	2,500	2,560	2,500	2,500
Econet	-0-	-0-	-0-	120
Conference		3,461	2,000	-0-
Regional Meeting	-0-	-0-	900	1,200

MANAGEMENT

Executive Manager	4,800	4,800	4,800	6,000
Office Supplies	700	1,314	900	1,000
Equipment Repairs	250	317	300	350
Phone	300	397	360	400
Printing/Copying	850	864	600	600
Postage	900	1,440	1,200	1,400
Manager Travel	1,200	2,497	-0-	100
Equipment Purchase	1,000	585	1,500	500
Taxes			-0-	-0-
Bank Charges		62	-0-	-0-
Storage			-0-	180
Miscellaneous		1,268	-0-	400

BOARD

President	2,800	2,874	2,500	2,000
Travel	2,400	3,666	1,500	1,500
Phone	700	203	500	500
Postage	200	107	200	100
Office Supplies	200	21	200	200
Park Commission Liaison	1,200	-0-	1,200	-0-
Miscellaneous		581		500

BOARD MEETINGS

	3,000	2,862	4,000	4,000
--	-------	-------	-------	-------

COMMITTEES

	2,000	4,492	2,000	2,000
--	-------	-------	-------	-------

FUNDRAISING

	2,400	4,109	2,400	2,425
--	-------	-------	-------	-------

RESERVE TO NEXT YEAR

	4,081	10,403	4,481	2,313
--	-------	--------	-------	-------

TOTAL EXPENDITURES	41,781	57,636	47,141	45,388
---------------------------	---------------	---------------	---------------	---------------

Humor In Unicorn

by Jeff Price

There are some really funny people out there in parks.

Several have the "gift" (curse?) of using play on words, or puns. I recall riotous exchanges with John Kolb, Fred Jee, and Wes Chapin on a seemingly innocent topic, which becomes a springboard for puns, such as, GEOLOGY: "...don't take me for granite...that isn't gneiss...of quartz not...you're full of schist...but it wasn't your fault...my sediments exactly..." Or BOTANY: "...you're barking up the wrong tree...I'm just trying to stem the growth...just a shade off...before branching out...and getting to the root of the problem...sometimes you have to go out on a limb...and just leave."

If these three guys ever worked in the same district, they could **PUNish** you endlessly. If you've ever been around a member of this tautological trio, you know exactly what I mean. Most people just groan.

Yet another elite group possesses the unique ability to twist common sayings or mix up quotes to produce humorous quirks of language usage. Over the past few years whenever I have heard one of these, I wrote it down. Quite a list has developed.

Recently, I have been encouraged by several fellow collectors and connoisseurs of linguistic anacoluthons to print my growing list of Malaprops and Mixed Metaphors. Seeing that a sense of humor has been missing in the CSPRA NEWSLETTER for awhile, at least since the untimely departure of Bill Krumbein's pointed, but nonetheless sick cartoons, I selected this forum. (I'm not really sure, however, whether this article is breaking that pattern or continuing it.)

Some quick definitions are in order:

Mixed Metaphor: as in describing Deukmejian's accomplishments, "He put the ship of state back on its feet," or saying, "Joe embarked on the sea of life where he quickly climbed to the summit."

The more comical Malaprop or malapropism: such as, "He was in the Arctic and saw polo bears," or the highly charged battle cry, "Remember Pearl Island!"

Every once in awhile, I'll get an Oxymoron, usually from a Headquarters memo, but those have been rare since Danger(field)mond left. Oxymorons are self-cancelling phrases, for example, "make haste slowly," "cruel kindness," "salary savings," and "deferred maintenance program." Comedian George Carlin's favorite Oxymoron is "military intelligence."

A sampling of my collection was used at the last statewide District Superintendent's confab by outgoing DS of the Year, Stevie "The Cape" Treanor, and received quite a few laughs, I'm told. In fact, the new Super of the Year came up with one of my favorite malapropisms, "...and don't try to tell me everything is applehood and mother pie."

If sober superintendents heard these and laughed, then I thought anyone might...so here goes.

When asked if he had questioned a subordinate on her involvement in a theft, the supervisor replied: "she denied it paragorically." Describing his feelings toward a recent decision on policy wording: "His words will live in infancy!"

A park visitor, registering a complaint about an employee writes, "...I just couldn't believe his appurtanence."

After an employee had successfully argued for a transfer to another unit, over her supervisor's protests, she decided the drive was just too long and wanted to renege. His comment: "She's buttered her own bread... now she has to lie in it."

To a ranger who couldn't get all his special projects and regular work done: "You've got your oar in too many pies."

(Continued on page 8)

Humor In Unicorn

(Continued from page 7)

When being questioned about true feelings on an issue: "I won't lay all my cards on the water until I know how deep it is."

Assurance of capability for a project to be assigned: "That's right down my aisle," and a personal estimation of self-worth: "I think I'm worth my salt in gold."

I will likely continue this column in future issues of the CSPRA NEWSLETTER, if things don't **fall between**

the cracks. If you have a few favorites, send them along. Until then, let me leave you with this gritty, problem-solving advice:

"Grab the bull by the tail and look your problem squarely in the face."

NEW MEMBERS

We are glad to introduce these new members to our organization. CSPRA offers a forum for sharing ideas and concerns and a means of making an impact in the field of the park professional. There is a place for each of you here, and your commitment to CSPRA requires a commitment to you from this organization. Each of us by getting involved can help the other. Again, welcome to CSPRA.

Kim Watkins, Lake Oroville, RAO I

George Hernandez, Santa Monica Mountains, Ranger I

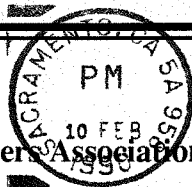
ANNUAL CONFERENCE

March 6 - 9, 1990
Chico

R
E
G
I
S
T
E
R

NOW

California State Park Rangers Association
P. O. Box 28366
Sacramento, CA 95828-0366



Mail to

AC
JOHN D. MOTT
116 TREETOP DRIVE
SANTA CRUZ CA 95060