

# NEWSLETTER

california state park rangers association

VOLUME VI NUMBER 16

March - April 1990

## EASEMENTS THREATEN THE INTEGRITY OF PARK LANDS

by Kevin Joe, SPR I,  
Manchester S.B.

Current State Park land use agreements are compromising our ability to protect the resources in parks. The most common problems arise from easements. Easements for public utilities such as power, sewer, or communication lines commonly are granted through park lands or were already located within the parks when they were acquired. Initial installation and  
(Continued on page 4)

## Save Bodie! Update

by Donna Pozzi

Activities of the SAVE BODIE! Committee have been happening so rapidly and intensely that it's been difficult to find the time to keep everyone up to date on our wonderful successes. As I write this brief report, we're still enjoying the thrill of victory with the passage out of  
(Continued on page 7)

## Pathways to the 21st Century: A Complete Success!

by Larry Martz

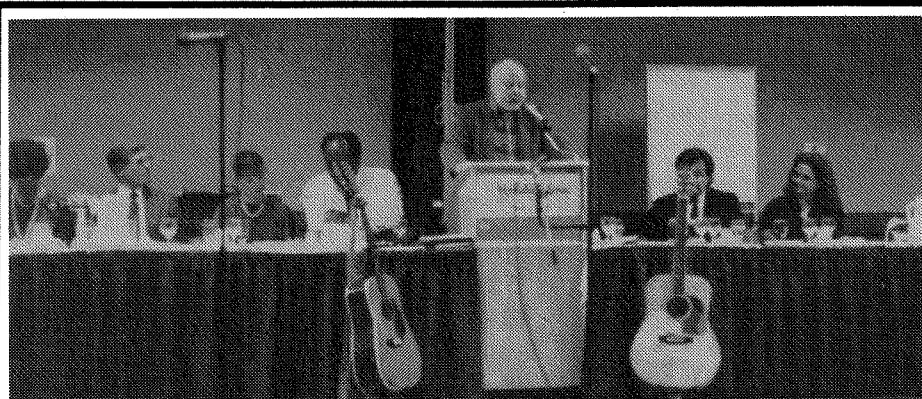
The 1990 CSPRA/PRAC/League Conference, held at the Holiday Inn in Chico, was both very enjoyable and very informative. In fact, this reporter heard many people say that it was the best conference ever; there were many comments about the high quality of all presentations.

The conference, sponsored jointly by the California State Park Rangers Association, the Park Rangers Association of California, and the League of California State Park Non-Profit Organizations, was attended by more than 200 park professionals. Here are some highlights:

### Tuesday, March 6

After a golf tournament at Chico's Bidwell Park golf course and tours of the Chico's historic sites (including Bidwell Mansion, the Gray Lodge Waterfowl Management Area, Bidwell Park, and Oroville, the conference gathered for a magnificent reception hosted by Wayne Guthrie of the State Park Foundation.

(Continued on page 6)



Newly installed President "Bud" Getty speaking at the banquet.

**THE CALIFORNIA  
STATE PARK RANGERS  
ASSOCIATION**

A professional association.

Office of the  
Executive Manager  
**Doug Bryce**  
P. O. Box 28366  
Sacramento, CA 95828  
(916) 383-2530  
\*\*\*\*\*

**PRESIDENT**  
**Bud Getty**  
(408) 335-9145  
\*\*\*\*\*

**VICE PRESIDENT**  
**Rick LeFlore**  
\*\*\*\*\*

**TREASURER**  
**Kevin Joe**  
(707) 877-3592  
\*\*\*\*\*

**DIRECTORS**  
**Donna Pozzi**  
**Jeff Price**  
**Ron Schafer**  
\*\*\*\*\*

**NEWSLETTER**  
**Doug Bryce, Editor**  
\*\*\*\*\*

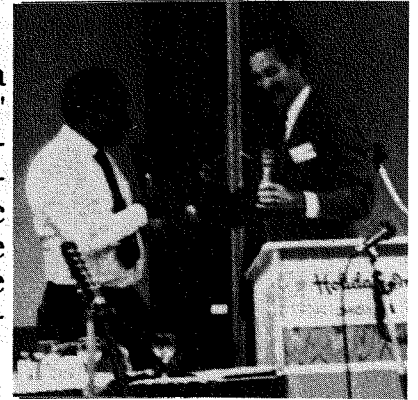
**CAL RANGER**  
**Brooks/Bryce**  
\*\*\*\*\*

For additional information on the  
association, write the  
Executive Manager.

## Outgoing President's Message

When I was young, I was rarely chastised for doing wrong by the rod. It was usually enough for my mother to give me a stern look and say, "Shame on you!" I always felt bad as a wave of guilt swept over me, and most of the time that was enough to prevent me from making the same mistake twice.

I sometimes think DPR needs a mother to say, "shame on you," when it blunders or does something contrary to its stated mission. Lacking such maternalistic guidance, I thought it might be worth the effort to fulfill that role within the confines of this message.



**Shame on you, DPR:** For agreeing to sell 19 acres of state park lands to the Vista Del Mar School District.

**Shame on you, DPR:** For agreeing to develop a permit system for the use of unlicensed off-highway motor vehicles at Anza-Borrego Desert State Park.

**Shame on you, DPR:** For agreeing to transfer El Pueblo State Historic Park to the City of Los Angeles, and for gutting the Los Angeles Community Involvement Office of all of its personnel except for a lone office technician.

**Shame on you, DPR:** For not taking a stronger stand against the threat to Bodie State Historic Park by the proposed mining of Bodie Bluff. Double shame, for hiding behind the excuse that no mining project has been formally announced.

(Continued on page 6)

The **NEWSLETTER** (ISSN 0887-9176) is published by CSPRA, P.O. Box 28366, Sacramento, CA 95828

The **NEWSLETTER'S** Editor is Doug Bryce; contributing editors and authors are as noted. Articles are welcome, 1000 words or less. All submissions become the property of CSPRA and may be edited without notice. **THE DEADLINE FOR ARTICLES IS THE 15TH OF THE MONTH PRIOR TO PUBLICATION.**

## Chico GEC and Board Meeting Highlights

### General Executive Council

**Save Bodie** A proposed joint resolution has been prepared to be submitted to the legislature for their approval. The resolution would request the federal government to withdraw mining rights in the area under BLM jurisdiction adjacent to Bodie.

### Cooperating Associations

Nina Gordon, State Park Ranger I, reported that the cooperating associations requested change of PRC 513 to allow them to manage the interpretive function. At a legislative hearing chaired by Senator McCorquodale, their request was rejected after testimony by CSPRA and SPPOAC.

**125th Anniversary** District Superintendent, Susan Ross, reported on the plans for the celebration. (See articles elsewhere in newsletter on this subject.)

**1990-91 Budget** Passed as previously printed in *Newsletter*.

### Resolution 90-1 Bodie Committee

Resolution passed unanimously that CSPRA formally acknowledge **Save Bodie!** as the most diverse, effective, and dedicated committee of volunteers in the history of our organization. Passed-unanimously.

(Continued on page 8)

## DPR Ski Team Receives Financial Aid From CSPRA

Editors note: The following is a letter to Don Murphy and the CSPRA Board of Directors from John Kolsrud, Ranger I, Pajaro Coast District.

I wish to thank you and the entire membership for the financial aid for DPR skiers to participate in the 1990 International Police Winter Games at Whistler/Blackcomb, British Columbia.

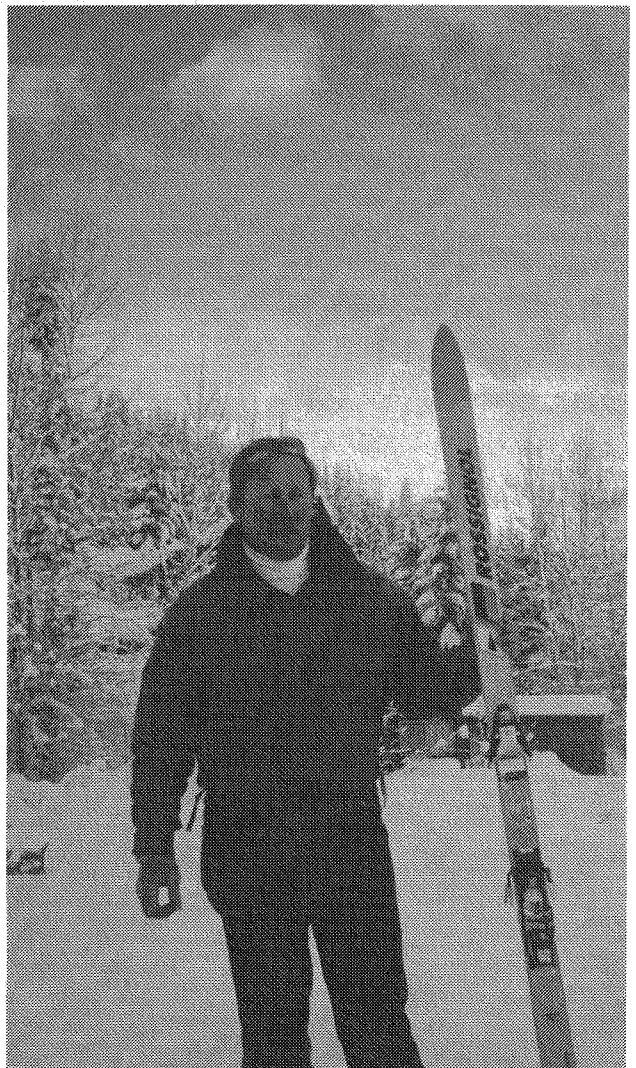
I was the only member of the 1989 International Gold Medal Squad that could attend the Canada Games. The competition was very stiff in each of the age groups and the 120 officer field brought racers from as far away as England, Australia, and the east coast of the USA.

The final race of the final day I was able to put it all together for a Silver Medal time on the Modified Giant Slalom course.

Courses put together by the Whistler/Blackcomb staff were of (FIS) standards and the snow was non-stop for the four-day event.

I felt a strong sense of pride for our Department as I accepted my award and strengthened my commitment to get other rangers interested in this "worldly and healthy" competition.

I know the expense of a trip of this nature would stop many from attending, but next year it will be in California. ~~YYY~~



---

## Easements

(Continued from page 1)

---

future upkeep of these projects have the capacity to severely damage, destroy, and visually impair the park resources.

Last year at Jughandle State Reserve PG&E crews used their easement rights to go in and cut down trees and brush under and around their power lines. Originally the crew was going to work with one of our region's resource ecologists, but then decided or forgot about this "verbal" agreement and sent in the crew without notifying the park staff. The resulting clearcut throughout the Reserve was legal in accordance to the easement.

Our best action would be to prevent such non-restrictive easements from being granted. Unfortunately, this may not be possible due to pressure from General Services for "generic" easements for all state lands.

A current example is the AT&T fiber optic cable which crosses a section of Manchester State Beach and was installed last year. We had a history of problems with AT&T not notifying the park staff when they were going to do maintenance on their old cable easement. Previously they have gone into the park with bulldozers and altered the flow of a creek to protect their old

communications cable.

When the new fiber optic cable installation was proposed, the required CEQA evaluation discovered that the project area contained the habitat of the rare Point Arena Mountain Beaver. A long and difficult series of letters, phone calls, and on-site meetings with AT&T, U. S. Fish and Wildlife, DFG, and DPR resulted in a Temporary Use Permit (TUP) for the new cable. AT&T and DPR agreed to a set of conditions which would protect the State Park resources and enhance future communications and cooperation.

As part of the TUP, AT&T provided funds to Northern Region to perform Mountain Beaver habitat studies and to perform a beach grass restoration project.

The following excerpt came from Northern Region's land agent, Bob Briscoe, who has been working on these problems.

"Subsequent to the approval of the Temporary Use Permit, I developed a draft easement incorporating the agreed upon terms and conditions. This easement was sent to Acquisition Division, who in turn sent it to General Services for preliminary review.

"Recently, we received review comments in which General Services deleted all the Resource Protection and other control language; additionally they revised the

easement from a specific limited purpose scope, under the control of DPR, to a vague, open ended, unrestricted usage of State Park lands subject primarily to the desires of the Grantee (AT&T)...General Services contends that an Easement is a real estate agreement, not an environmental document and that if DPR needs special environmental language or special conditions of any type they should be in a side agreement.

"California State Park land is not ordinary, it is not standard, and it is not generic. The criteria for acquiring State Park land is that the land-form, or the scenic beauty, or the cultural parkland should be afforded the highest level of protection.

"One of the ways we protect the public trust is to discourage, as much as possible, non-park use of State Park lands. All easements allow non-park uses of State Park lands. When easements are granted, our responsibility to the public trust is to minimize adverse impacts by writing clear, unambiguous resource protection language that can be enforced by our field staff.

"The single most important step in the easement application review process is the CEQA evaluation. It is during CEQA that an interdisciplinary team of park professionals study the proposed  
(Continued on page 5)



---

## Easements

(Continued from page 4)

---

project and evaluate potential impacts to park resources. CEQA is very project specific and detail oriented. Project recommendations and approvals are usually based on and conditioned by the details--nuts and bolts answers to questions such as what, where, why, who and how. Most resource protection control language is a result of the CEQA review.

"The proposed generic easement ignores park resources and would seem to deny the fact that CEQA evaluations and resource protection measures are required by law. In the case of Manchester State Beach...we have a situation where the interim document Temporary Use Permit does an outstanding job of protecting park resources while the permanent General Services document affords the park virtually no protection. We would be better able to protect the park without any agreement than with the proposed easement.

"An easement as a recorded document is the only official public record describing the terms and conditions governing the Grantee's (AT&T) use of State Park lands. Thirty-five years from now when all of us who negotiated the original agreement are gone, the ranger out in

the field is going to be stuck with an easement that allows the Grantee carte blanche use of State Park land. That future ranger when confronted with the generic easement will be forced to allow uses of the State Beach that were never intended by the authors of the agreement. It is imperative that resource protection language be made an integral part of all State Park land use agreement. It is equally important that the full agreement be recorded and thereby included in the permanent public record.

"There are some in Sacramento who contend that easements can be enforced only by a court of law. This is not true. In practice, an easement or other agreement which contains resource protection language is most often enforced by the power of persuasion. Day in and day out, our rangers, superintendents and other field staff use the power of persuasion to protect the parks, to teach an environmental ethic, and to ask people to respect and "do right by" the park. In addition to persuasion, the park ranger is in an excellent position to immediately enforce resource protection agreements and to stop any abuse of State Park lands through a variety of methods including: stop work orders, citations, confiscation or impoundment of tools and equipment, and arrest. In a sense, court action could be involved, but

hopefully it would be on DPR's terms, on the side of the public trust, and because of assertive resource protection with the abusers facing criminal charges.

"The official title of our easements is "Agreement and Grant of Easement." There is, as far as I know, no point of law or regulation that would preclude resource protection language from any DPR "Agreement." The General Service dictum seems to be an arbitrary staff recommendation designed for their own convenience. If the Department of Parks and Recreation is forced to adhere to this General Services dictum, then effectively we will be unable to carry out our mission to protect State Park resources and to preserve those resources forever. My recommendations are as follows:

"1. We should not issue any more easements until this issue is cleared up to our satisfaction.

"2. We should immediately end our practice of issuing Temporary Use Permits (TUPs) to allow construction of permanent facilities while an easement is being processed. In the past we have issued TUPs under the assumption that our negotiated terms and conditions would be included in the permanent easement. Under the current General Services policy we are inviting abuse and misuse of park

(Continued on page 6)

---

## **Easements**

(Continued from page 5)

---

resources by issuing strong TUPs which will become weak easements."

Currently there is no resolution to this problem, and Bob Briscoe is working with the other land agents and with headquarters to resolve this issue. It is important for each of us to be familiar with all easements in our units and to provide input to shape future easements in accordance with our mission. ~~YYY~~

---

## **President's Message**

(Continued from page 2)

---

As we all know, mothers can be loving and supportive, and can be counted on to let you know you're doing things right. I can still hear my mother say, "I'm really proud of you. I knew all along you could do it." Clearly DPR has done some things right lately. So here goes.

**I'm proud of you, DPR:**  
For the excellent job done on the Mount Diablo General Plan and the Fire Management Plan.

**I'm Proud of you, DPR:**  
For finally hiring someone to coordinate the statewide volunteer program.

**I'm proud of you, DPR:**  
For the way the operations staff in the Central Coast Region performed during the earthquake, especially the staff at Pajaro Coast.

**I'm proud of you, DPR:**  
For the way the staff at the Los Lagos district handled the first use of deadly force by a ranger.

The park family is no different from any other family. We do some things right, and some things we struggle with. On balance, I believe we are a healthy family which at times suffers from (Continued on page 8)

---

## **Pathways**

(Continued from page 1)

---

Wednesday, March 7

The next day's sessions opened with an address by Henry Agonia, Director of the Department of Parks and Recreation. He graphically outlined the fiscal status of state parks over the last ten years, and made some hopeful projections for the '90s. Then, a panel discussion was hosted by Ross Henry, Chief of the Planning and Local Assistance Division, in which numerous innovative ideas for the next decade were broached. I was very pleased to see many, many participants taking extensive notes.

Our keynote speaker, Bern Shanks, talked about the potential "negatives" of the

coming ten years, and offered strategies to combat them. Other sessions that day included "Cultural Computers," "Vanishing Resources," "Breaking Barriers," "Structures of History," "Bats," "Star Thistle," and "Creative Solutions to Resolving Trail Use Conflicts." That night, Mistix sponsored a really great spaghetti dinner and square dance at the Chico Area Recreation District Hall.

Thursday, March 8

After organization meetings for the three conference sponsors and a lunch honoring their past presidents, sessions included "Time Thieves: Are They Getting Away With the Loot?," "Computers - Crashing Your Park and Resource Problems Away," "Creative Participation - Innovative Programs Between Parks and Other Groups," "Musical Interpretive Moments," "Funding the Fundamentals," and "Pushing It To The Limit" -- a truly inspirational presentation by Mark Wellman, the Yosemite National Park ranger who climbed El Capitan using only his arms. That night, the conference banquet saw many awards to many people; induction of Phil Frank (cartoonist who draws "Farley") as an honorary member of CSPRA; and entertainment by Carl Burger, a state park ranger at Portola SP whose witty and irreverent music has become a state park tradition. (Continued on page 7)

---

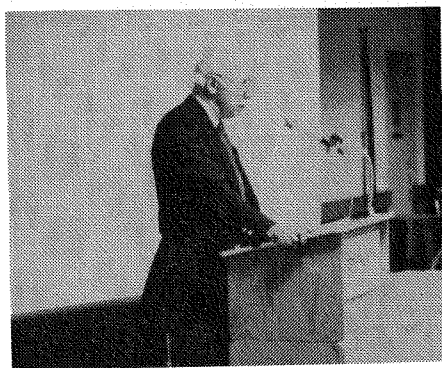
## Pathways

(Continued from page 6)

---

Friday, March 9

After a breakfast meeting of the presidents of the three sponsors, sessions included "the Indiana Jones Legacy: Interpretation of Cultural Resources," "Exhibit Planning Workshop," and "Behind The Scenes - The Making of a Park Bond Act." Our Closing speaker was Howard Chapman, a 40-year veteran of the National Park Service. He opened our eyes to public perception of what we do, using (among other things) the NPS political experience during year before last's Yellowstone fires as an example of how we can miss a golden opportunity for interpretation.



**Howard Chapman**

The 1990 conference presented two basic themes that are essential for the future of parks and recreation in general, and the State Park System in particular:

(1) We must realize that

the 1990s will be the decade of the environment in terms of public perception, and we must take maximum advantage of this fact.

(2) We must realize **education** -- most particularly of young people -- is perhaps the most important part of keeping our heritage and tradition as park stewards not only alive but flourishing for future generations.

Our 1991 conference will involve the California State Park Rangers Association, the State Park Peace Officers Association of California, and the Department of Parks and Recreation, working together to celebrate the 125th anniversary of the California state park ranger. Please mark October 1 - 3, 1991 on your calendar now, and make plans to join us for this historic event!

---

## SAVE BODIE!

(Continued from page 1)

---

committee of Senate Joint Resolution (SJR) #60. The Senate Natural Resources and Wildlife Committee voted 6 to 2 to pass this resolution on to the full Senate. The resolution seeks the withdrawal of the public lands around Bodie from mining. CSPRA was instrumental in getting the resolution introduced by Senator

Dan McCorquodale, obtaining co-authors, and convincing committee members to vote it out of committee. To do this, we did an urgent postcard mailing to 1,000 environmentalists and published a special report geared to the legislature. Many CSPRA members and SAVE BODIE! activists played critical roles in this huge effort. Of special note is the support of former director Pete Dangermond's firm, Dangermond and Associates.

Now we need the help of **all** CSPRA members to call and/or write your State Senator and urge passage of SJR #60. When you receive this newsletter, this resolution will be pending; your immediate action is vital! If you need more information or can provide additional assistance, please call Donna Pozzi at home at (916) 443-3359. Assuming Senate passage, the Assembly will be next....

SAVE BODIE! completed a major fundraising mailing to nearly 1300 known supporters of park and environmental causes. We're also doing special mailings to activists who've already written letters on Bodie's behalf, asking their help in finding out Galactic's plan for Bodie. Our work with the media is on-going -- look for the April *American Heritage* for a cover story on Bodie and the May issue of *Sunset Magazine*. Support from other  
(Continued on page 8)

## SAVE BODIE!

(Continued from page 7)

organizations continues, including a resolution from CPRS that received wide distribution in the legislature. It's been a busy, busy time. If you can help, we need you! And thanks again to all who've already done so much. YYY

## GEC Highlights

(Continued from page 3)

**Resolution 90-2 El Dorado Trails** Resolved, that we support the implementation of the El Dorado County Trails Master Plan as approved by the El Dorado County Board of Supervisors on April 12, 1989, and support the efforts of the public agencies, trail groups, private sector institutions, and individuals who are working in cooperation with the El Dorado County Hiking, Biking and Equestrian Trails Committee to bring these trails into reality.

### Installation of Officers

Rick Parmer installed Bud Getty as President, and Rick LeFlore and Ron Schafer as Directors.

### Board Meeting

**Vice President** Rick LeFlore appointed vice President.

**Feral Pigs** This issue is a

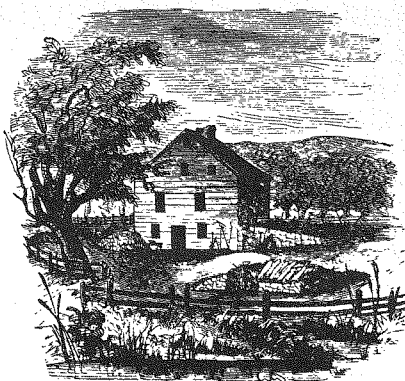
statewide problem. Santa Cruz has a proposal that appears to be a good solution to the problem and should be supported. The issue will be discussed by the Fish and Game Commission in Long Beach. Ron Schafer will attend and support CSPRA's interest in the issue.

**Resource Integrity Committee** Gary Strachan submitted a proposal for this committee. With a few minor changes it was accepted.

**Outdoor Ethic** This document, written by John Scull, needs publicity and support. CSPRA will print it next month in the *Newsletter* and will request that the Department publicize and support it.

**Salary Savings** Denzil Verrardo and John Kolb will work on the salary savings problem.

**VSRT & AVRSRT Course Cancellations** Rick LeFlore will meet with SPPOAC and the Department regarding this matter.



## Presidents Message

(Continued from page 6)

a lack of good old-fashioned parental guidance. Put another way, we at times lack leadership. When this becomes true, then it is incumbent upon each of us to attend to the health of the family by exerting the leadership qualities inherent within each of us. Remember, when each of us cares more about the other than we do about ourselves, then we are all winners. YYY

## Would You Like To Have Our Annual Conference In The Fall?

Since we are having the 125th anniversary celebration in October of 1991, the board is considering continuing with fall conferences in the future.

### What do you think?

Please let a board member know how you feel before June 15, or just write to CSPRA, P. O. Box 28366, Sacramento, CA 95828-0366.

Do it today!



Support the "SAVE BODIE" efforts  
with your own special edition T-Shirt

\$12.50 each in either red or blue (Med., Lg., & XLg. only)  
100% cotton (pre-shrunk)

Send check and order form to : Fred Soderlund

#1 El Capitan State Beach Road  
Goleta, CA 93117

.....  
Make checks payable to: CSPRA (Ca. State Park Rangers Assoc.)

Name and Address \_\_\_\_\_

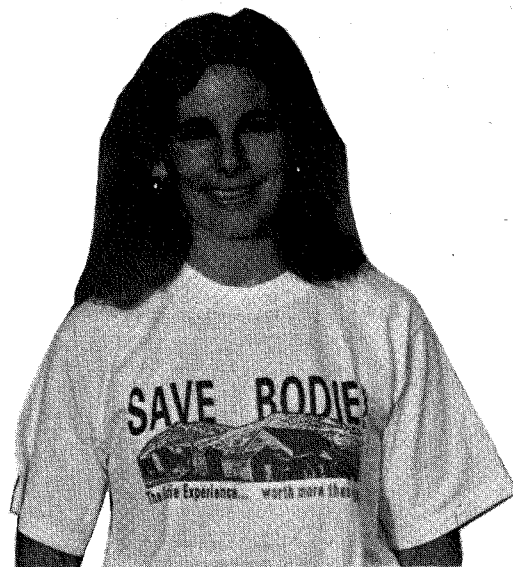
\_\_\_\_\_  
\_\_\_\_\_  
\_\_\_\_\_  
\_\_\_\_\_  
ZIP \_\_\_\_\_  
Phone: (    ) \_\_\_\_\_

Qty	Color	Size	Price Each	Amount

Shipping & Handling  
Add 1.00 for each additional shirt

TOTAL

2.50



For further information about this issue, call or write:

Save Bodie! P.O. Box 28366 Sacramento, CA 95828-0366 (916) 383-2530

## THE CSPRA STORE

### ORDER FORM

Name: \_\_\_\_\_

Address: \_\_\_\_\_

City: \_\_\_\_\_ Zip: \_\_\_\_\_

Send orders to:

CSPRA  
P. O. Box 28366  
Sacramento, CA 95828-0366

Make checks payable to CSPRA

T - Shirt, white with decal in color  
Small \_\_\_\_\_ Medium \_\_\_\_\_ Large \_\_\_\_\_ \$12

CSPRA Pin \_\_\_\_\_ \$4

CSPRA Decal 3" \_\_\_\_\_ \$1

Mugs, green with decal in color \_\_\_\_\_ \$4

CSPRA Patch \_\_\_\_\_ \$2

CSPRA Decal 1 1/2" \_\_\_\_\_ .50

TOTAL \$ \_\_\_\_\_

# A Day In The Life of a California State Park Ranger



Next year marks the 125th anniversary of California State Park Rangers, the first being Galen Clark who was appointed as "guardian" of Yosemite in 1866. To help celebrate the 1991 anniversary, a "Day in the Life" photo session will be staged throughout the California State Park System on the 4th of July (week) of this year. The resulting slides will be used in a special state park ranger history publication currently being planned, as well as in special slide shows and photo displays. In addition, the winning photos will be published in the California State Parks Foundation's *Parklands* magazine.

Several "substantial" prizes are being planned for different categories of photos. Although some contest details are still being worked out, the contest is open to all DPR employees, spouses, and volunteers. So, dust off your cameras, and join us in creating this historic pictorial essay. We need as many photographers as possible to participate.

## 125th Anniversary of California State Park Rangers "A Day in the Life" Photo Session

To help insure the success of this history-making event:

- ☐ I am interested in helping organize the 4th of July Photo Sessions
- ☐ I am interested in being a photographer
- ☐ I would like more information about the 4th of July "Day in the Life" Photo Sessions

Name \_\_\_\_\_

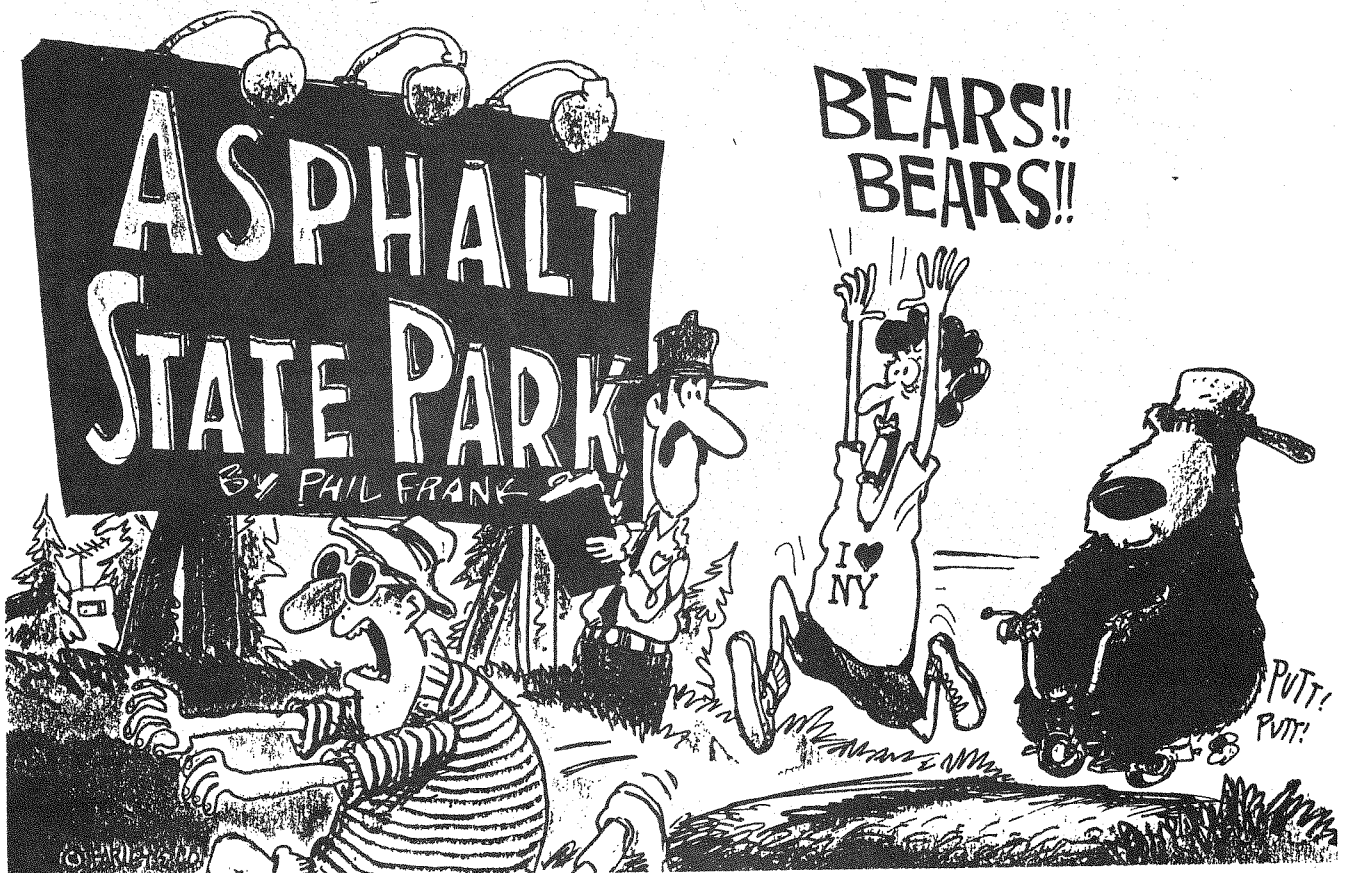
Address \_\_\_\_\_

City \_\_\_\_\_ State \_\_\_\_\_ ZIP \_\_\_\_\_

Telephone (Work) \_\_\_\_\_ (Home) \_\_\_\_\_

I am interested in photographing Rangers  
in the following state park(s):

Clip and mail to: Kathy Franklin, Ft. Tejon State Historic Park, PO Box 895, Lebec CA 93243  
or phone (805) 248-6692.



Phil Frank has made copies of his book, *Asphalt State Park*, available by mail so that those of you who were unable to purchase a copy at the conference last month may have another opportunity.

Complete the order form and mail it directly to Phil Frank with a check for \$8.00 per book (includes tax, postage and handling).

Please send me \_\_\_\_\_ copy(s) of *Asphalt State Park*. I am enclosing \$\_\_\_\_\_ to cover the book(s), tax, shipping and handling.

Send my book(s) to:

Name \_\_\_\_\_

Address \_\_\_\_\_

City \_\_\_\_\_ State \_\_\_\_\_ ZIP \_\_\_\_\_

I would like the books signed by Phil.  
(Specify to whom it should be signed below).

Mail to: Phil Frank, 500 Turney, Sausalito,  
CA 94965



Many of the employees at the third annual State Park Employees Conference in 1940 are wearing the first State Park uniform.

## Old Ranger Uniforms Needed For Display

"In 1939 the Uniform Committee recommended a State Park Uniform consisting of Lincoln gray-green trousers and jacket, gray shirt, black tie, black leather goods, and the stiff-brim Stetson. Since this first official uniform everything but the Stetson has seen drastic change." (History of the Ranger Stetson)

Do you have or know someone who has any of these old ranger uniform items? The 125 year Ranger Anniversary Committee is looking for old uniform items for use in displays as a part of the 1991 celebration. Any pre-1960 uniform, leather, patches, badges, or other items relating to rangers/attendants/superintendents/park wardens are wanted. If you have any leads for any such items, especially the first 1939 uniform, please contact Mike Lynch at Auburn SRA • (916) 885-4528 or Susan Ross at (916) 777-5361.

## **Snow Falls and Interpretation Reigns in St Paul, Minnesota**

**by Linda Herr Rath**

Once a year, the National Association of Interpretation, a professional organization for interpreters, holds its national conference. Over 740 interpreters from Canada and the United States attended this year's conference held in St. Paul, Minnesota on November 5 through 10. Participants represented federal, state, and county agencies, as well as a variety of nature centers, museums, zoos, and botanical gardens.

Field interpreters and managers shared information, ideas, and experiences during this week-long conference. Such interpretive greats as David Stokes and Dr. William J. Lewis, as well as 138 other interpreters, including myself, presented workshops on topics ranging from interpretive methods to visitor center and exhibit design to solutions to the world's environmental problems.

A variety of field trips complemented the workshops. Two zoos, three museums, and several nature centers provided me with many ideas for exhibits and interpretation.

Exhibitors presented their wares and services, from silk screened T-shirts to interpretive design and exhibits to publications.

A storytelling session with storyteller Susan Strauss wrapped up the week with Susan's environmental philosophy on the art of storytelling.

Besides getting to meeting many new fellow interpreters and sharing our interests and concerns about the field of interpretation, the conference reconfirmed to me that interpretation is important to the world's future environment and how we harm or protect it. Presenting a workshop on interpretive techniques to my peers was a great experience. Most of all, the conference renewed my "interpretive" spirit. I am once again ready and willing to apply myself in this important and challenging field.

If it weren't for the scholarship from CSPRA and the willingness of five people to let me share a floor in their hotel room or my husband, who kept saying "just do it" whenever I thought of bailing out on the conference, I might not have come to the NAI conference in Minnesota.

Did it snow in St. Paul? Yes, and interpretation did indeed reign over all of us there.

## **Natural Resource Communication Workshop**

**by Katie Buckley**

I was looking forward to the trip to Chico. I had been selected as one of 16 participants for the 12th annual Natural Resource Communication Workshop held January 8 - 12, 1990 at California State University, Chico; and I was ready for the trip. With a scholarship from CSPRA helping to cover my lodging and travel costs, and some training time away from my "beat" at Pismo Dunes OHV, I was on my way. It was a long drive. Leaving early in the morning, my drive took me through Steinbeck country, up and over Pacheco Pass, a quick wave to San Luis Reservoir as I passed by, and then north on Highway 5. It was almost dark by the time I pulled into Chico. It was good to be back at Chico State, my Alma Mater.

The class, Natural Resource Communications, was designed as a workshop to help natural resource workers more effectively deal with the general public through personal presentations - specifically slide presentations.

The objective of the workshop was to provide practical experience in planning.  
(Continued on page 15)



# Humor in Unicorn

by Jeff Price

There are many latent and even a few semi-professional comedians working in the park and recreation field. You could probably develop your own list of characters. Before I get to **Mixed Metaphors and Malaprops**, let me share some of my "life list" comedy favorites.

Of course my "singing fool" award goes to

Carl Burger (now there's a weird man!). I always enjoy P. J. Ryan's sardonic writing style in *Thunderbear*, although he was funnier in California than in Louisiana. Retired Bob (man-on-the-mountain) Stewart's endless tall tales were always entertaining and almost believable.

Actually, my all-time favorite "almost believable" story was told by Pablo Schuessler, recounting to a group of eager ranger trainees just how he was **ambushed and killed** in Viet Nam! (Continued on page 15)

## 125 Year California Ranger Anniversary Donor Form

Yes, I would like to financially help the celebration of the California State Park Rangers' 125th year anniversary.

I understand that this is an officially sponsored program of the California Department of Parks and Recreation, the California State Park Rangers Association, and the State Park Peace Officers Association of California. All donations will go directly towards research, publication, displays, and celebration events for the 125 Year Anniversary. **Thanks!**

### Donations:

- \_\_\_ \$20 (Individual)
- \_\_\_ \$50 (Association or major individual)
- \_\_\_ \$100 (Small business or group)
- \_\_\_ \$500 (Large business or group)

Name: \_\_\_\_\_

Address: \_\_\_\_\_

City: \_\_\_\_\_ State \_\_\_\_\_ Zip \_\_\_\_\_

Make checks payable to: 125 Year Ranger Anniversary

### KIOSK KWIPS



---

## Humor in Unicorn

(Continued from page 14)

---

John Lunday always had the smoothest patter and best timing for telling jokes. Besides, his boisterous and ear-splitting laugh was usually enough to get you going. The best in the "quick answer to a dumb question" category was from Carl Mairer. When asked introspectively how he had made a hiring decision from competitive candidates, he replied, "he was the only one that could talk like Donald Duck." The two funniest campfire/warmups I've ever seen, were done by Mike French last summer on "dangers at the beach," and Dave Van Cleve as a ranger trainee imitating a rainbird sprinkler.

As promised, here is the second installment of **Mixed Metaphors and Malaprops**. Thanks to those of you who have sent me material. Send your personal anacoluthons directly to me at home or at Channel Coast District.

The employee was describing a close call while driving on a steep and narrow section of park road: "I was so scared it made the creeps run up my back!" When no one appreciated his brush with death: "That makes me so mad it rubs me in the craw."

When the inevitable confronts him: "It looks like

we're staring at the handwriting on the blank wall."

Regarding the weather: "Brrrrrr. I'm frozen to a pulp."

To avoid blame for the error, she said: "My hands are as clean as a bell."

Describing another employee's impulsive decisions: "...always shooting off the shoulder."

Being democratically cautious: "Before I can give you an answer I'll have to caucus my field people." When pressed for a change of decision: "I want something in concrete on paper before I'll budge an inch." Very impatient: "I refuse to stand idly by and sit on my hands while some one else muddles the water."

The ultimate caveat for our Safety and Enforcement section in Field Services: "Let's not shoot ourselves in the foot every time we have a chance to cut our own throats."

After making a regrettable error: "That mistake will be an albacore around my neck my entire career."

Extra assurance: "...and I'm very imminent about this matter!"

Employee illness creates a work assignment and priority problem: "Two people are out sick today, so we're light

handed."

The answer is so very obvious: "It sticks out like a sore throat."

Until next time, let me leave you with this gritty observation: "The more things remain the same, the more they are like history all over again."

---

## Communication Workshop

(Continued from page 13)

preparing, and presenting personal appearance programs using 35mm color slides as visual aids. Emphasis was placed on preparation of graphics, public speaking, and organization.

The class was team taught by Dr. Jon Hooper from CSU - Chico, and Dr. Gail Vander Stoep from the University of Massachusetts, Amherst.

The workshop started bright and early Monday morning. My classmates were from the natural resource agencies of Fish and Game, BLM, Department of the Interior, U. S. Fish and Wildlife Service, Department of Agriculture, Army Corps of Engineers, and California State Park's contribution - me. Three had traveled from Alaska, with Minnesota, Massachusetts, and Arizona being represented.

The agenda included  
(Continued on back cover)

## Communications Workshop (Continued from Page 15)

lectures on communication principles, hands-on graphic preparation, including computer generated graphics and the most important tool of the workshop...critique.

Each of us was required to give two presentations, a 5 minute (8 - 10 slides) and a 15 minute (20 - 30 slides). The 5-minute talk

was to work on fear, dealing with projector problems, etc., while the 15-minute talk emphasized the actual content and presentation of a topic.

Anyway, the workshop was great! We learned all about slides, making slide graphics, shooting slides from copy stands, developing instant slides with a new process from polaroid, etc.

Thank you, CSPRA, for the scholarship.

## New Members

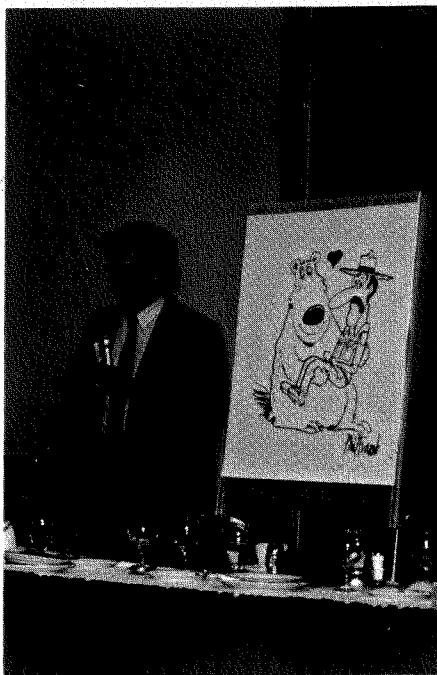
We are glad to introduce these new members to our organization. CSPRA offers a forum for sharing ideas and concerns and a means of making an impact in the field of the park professional. There is a place for each of you here, and your commitment to CSPRA requires a commitment to you from this organization. Each of us by getting involved can help the other. Again, welcome to CSPRA.

Dangermond & Associates, Sacramento

Janet M. Anderson, Anza Borrego, District

City of San Jose Parks Department

Leon G. Smith, Sacramento District



Honorary Member, Phil Frank, and cartoon he drew at banquet.

California State Park Rangers Association  
P. O. Box 28366  
Sacramento, CA 95828-0366



Mail to:

JOHN D. MOTT  
116 TREETOP DRIVE  
SANTA CRUZ CA 95060