

NEWSLETTER

california state park rangers association

Volume VI Number 23

November 1990

Former Chief of Beaches and Parks Is a Supporter

To the 125th Year Committee:

Enclosed is my \$100 check donation to the 125 Year California Ranger Anniversary with my warm wishes for the success of your program.

The CSPRA was organized with my full encouragement and support when I was Chief of the California Division of Beaches and Parks (1961-65). I am very proud of the outstanding professional group it has become and of the determined stands it has taken in defense of our State Park System.

I did not use the donation form included in your Fall, 1990 publication commemorating California State Park Rangers as I wished to retain the entire publication without the cut-out.

Aloha . . .
Ed Dolder

Editor's note:
Retired member Ed Dolder is a regular and substantial contributor to the SAVE BODIE! Committee. He has also written many letters for the Bodie cause. Our sincerest thanks and best wishes to you, Ed.

CSPRA's First President Passes

CSPRA's first president Paul Griffith died October 12 from the effects of long-term lung problems. Griffith developed an idea from a Parks Supervisors meeting in Columbia SHP in early 1964 into the formation of the California State Park Rangers Association in the fall of 1964. He served as the first president until eye surgery forced him to resign in 1965.

He was an employee of the Department from 1943, when he started as a ranger, until his retirement, as a Ranger IV in 1973. Assignments included Pfeiffer Big Sur, Calaveras, Anza Borrego, Tahoe, Santa Cruz, Squaw Valley, Mendocino, and Sacramento.

After his retirement he sold real estate for Harvey West in Graeagle for twelve years.

President Bud Getty, Doug Bryce, and Louis Wakefield were CSPRA members who attended Griffith's memorial service in Graeagle. Prior to his death, he resided in Redding.



Calaveras Big Trees — South Grove, "Palace hotel Tree", Dolder in Center.

**THE CALIFORNIA
STATE PARK RANGERS
ASSOCIATION**

A professional association.

Executive Manager

Doug Bryce

P. O. Box 28366
Sacramento, CA 95828
(916) 383-2530

PRESIDENT

Bud Getty

**Santa Cruz Mtns
Superintendent**
(408) 335-9145

VICE PRESIDENT

Rick LeFlore

Delta District Ranger II
(916) 777-7705

TREASURER

Kevin Joe

Mendocino District Ranger I
(707) 877-3592

DIRECTORS

Donna Pozzi

Supervisor of Interp. Programs
(916) 322-8545

Jeff Price

Channel Coast Dist Chief Rngr
(805) 654-4615

Ron Schafer

Orange Coast Dist Chief Rngr
(714) 848-1566

NEWSLETTER

Doug Bryce, Editor

CAL RANGER

David Brooks & Doug Bryce

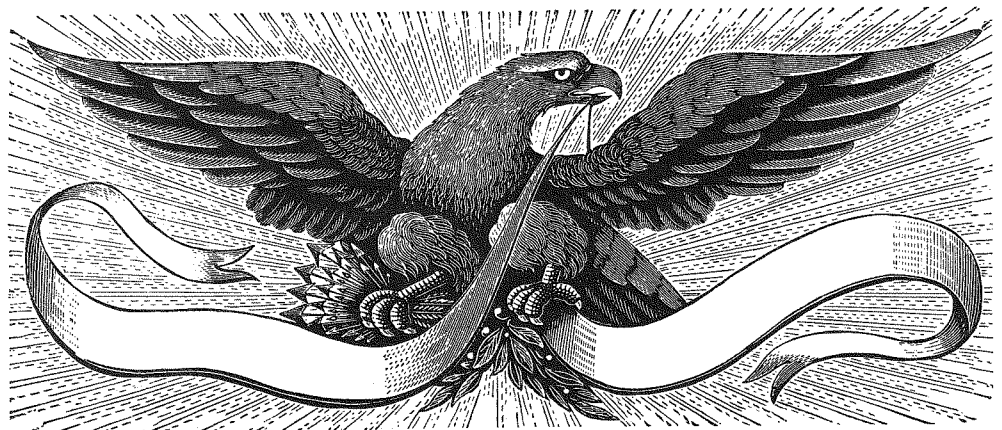
SAVE BODIE! and all other
committees use CSPRA address.

PRESIDENT'S MESSAGE

Attempting to dip one's toes ever so slightly into the politics of the initiative process can certainly make life interesting for CSPRA, can't it? I thought we were dealing with Golden Pond, but for a while, it was more like trying to sail the Straits of Magellan. Oh, well, all that ends well - - -

If any of the park or environmental propositions did pass, it will be CSPRA's job to try, along with other interested groups, to see that the funding is spent according to the intent of the initiative and not just used to balance the budget and fund the normal programs of the Department.

So we will continue to be busy. If you have any thoughts on what we should push for, let me or any of the Directors know.



The NEWSLETTER (ISSN 0887-9176) is published by CSPRA, P.O. Box 28366, Sacramento, CA 95828.

The NEWSLETTER'S Editor is Doug Bryce; contributing editors and authors are as noted. Articles are welcome, 1000 words or less. All submissions become the property of CSPRA and may be edited without notice. **The deadline for articles is the 15th of the month prior to publication.**

Oral History of Murrell "Greg" Gregory by Bill Krumbein

Greg was born in Goldfield, Nevada, May 28, 1909; but at age 2 his family moved to Mariposa County where he lived through high school.

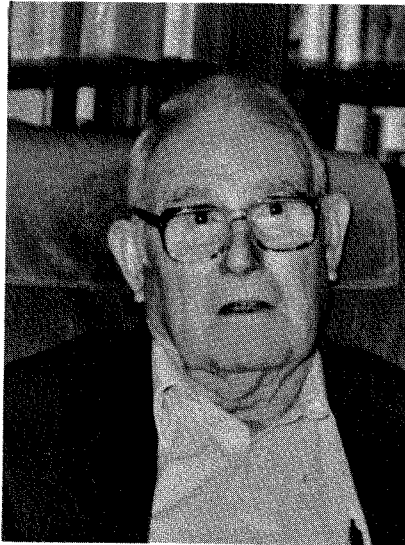
He held numerous jobs with the National Park Service, but they were only temporary positions — in Yosemite National Park he worked as a laborer, insect control, night watchman, fire guard, and ranger. Greg also worked for the Curry Company in their maintenance department. In the wintertime work was scarce so he and his buddy even sold bootleg whiskey at dances. A lot of people were out of work then.

Back then, it was very difficult to get on permanent with NPS. One day he was talking with Lon Garrison, another ranger, who happened to be permanent. Since Lon didn't need it he offered Greg a blank application for State Parks. In a what-the-heck attitude, Greg turned it in. He took the exam, and passed. He waited. Over the next year or so he was offered a temporary position at Fremont Peak and turned it down. Then he was offered a permanent position at Castle Crags and accepted . . . only to learn that someone else was hired. More waiting. Then, in 1938 a position at Big Basin came open. It was offered to him and he accepted. So began Greg's 36 years of service (military time also counted).

1938-39	Big Basin	Custodian
1939-40	Mount Diablo	Custodian
1940-41	Burney Falls	Custodian
1940-41	Big Basin	Custodian
1941-43	Burney Falls	Custodian
1943-46	Military Leave	Navy
1946-47	Castle Crags	Rgr II
1947-48	Armstrong Redwoods	Chief Rgr
1948-55	District 2 Hdqtrs	Assist Sup
1955-56	Dist 6 Hdqtrs	Assist Sup
1956-59	Sacramento	Land Plner
1959-74	District 2 Hdqtrs	Assist Supt

Asked what his greatest obstacle was, Greg responded, "lack of a college education." Asked what his greatest accomplishment was, he quickly spouted, "staying on 36 years."

Greg liked all of his assignments throughout his career; but if he had to choose a least favorite, it was his stint at Sacramento Headquarters.



Perhaps it was in Sacramento where he acquired the notion that some Sacramento people look down on field people. A pet peeve of his, that field people are not given full credit for what gets done.

He feels the Department's greatest accomplishment he's seen was the creation of a park "school," our William Penn Mott, Jr. Training Center. "You really had to dig to learn about park work through most of my career." He's not all that happy about the Department buying up a lot of property — more than they can take care of. And I was saddened to hear that Greg doesn't visit our parks now. He's very discouraged at what he's seen, the shape of facilities in disrepair, and litter, and unclean restrooms. I could tell that these words hurt as he spoke.

Advice to the new ranger? Keep your eyes and ears open and ask questions . . . and don't let your head swell . . . or get badge happy."

Greg liked his long career with State Parks, "The job was made for a body and I fell into it, and stayed."

Greg and his wife, Lorraine, live in Santa Rosa. He's a homebody who enjoys gardening (flowers).

CSPRA Recycling Survey

With much concern focused on global environmental problems, it is important to develop responses that we can pursue as an association, and as park professionals on the job.

CSPRA wants your ideas and insights for the pursuit of an active recycling/environmental ethic agenda.

You can help by answering the following questions on a separate sheet of paper. Please mail your responses by December 1 to:

CSPRA Recycling Survey
P. O. Box 28366
Sacramento, CA 95828-0366

1. What efforts has your office/district been making to push recycling/environmental ethic efforts within DPR?
2. What would you recommend your office/district do to further recycling/environmental ethic efforts?
3. What do you recommend DPR do to further the recycling/environmental ethic efforts?
4. What role can CSPRA play to further recycling/environmental ethic efforts within DPR?
5. What should CSPRA be doing as an organization to pursue recycling/ environmental ethic efforts?
6. Are you interested in helping CSPRA's recycling/environmental ethic efforts?
7. Additional comments:

Please include your name, District or office, and phone number.

Thank you, Rick LeFlore, Vice President

Have We Saved Bodie Yet?

by Donna Pozzi

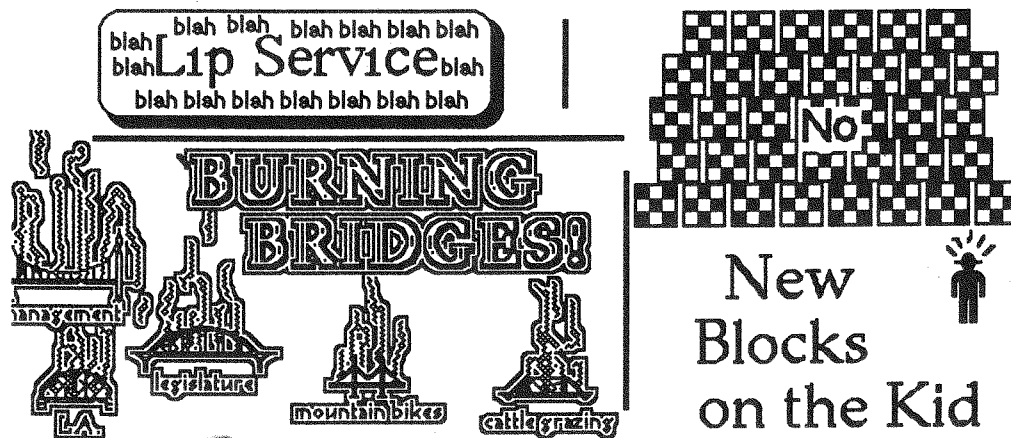
I'm frequently asked that question and still haven't come up with a good answer. There's no doubt we've made a major impact and are largely responsible for the fact that Galactic has fallen behind their original projections of being into production at Bodie in 1990. Due to our efforts, Mono County is now in the midst of preparing an EIR for mineral exploration at Bodie. Galactic had hoped to proceed with their drilling program and test work without the disclosure and public scrutiny provided by an EIR. Now they've had to apply for a Conditional Use Permit and reveal their plans to disturb 25 - 55 acres. They want to drill 435 - 1080 holes and take bulk samples of 50 - 1000 tons of each rock type, in 7 locations. Blasting, trenching, use of up to 6 drill rigs, and 5000 linear feet of roads have all been described in the EIR scoping document. Day and night shifts, and scores of workers, would be involved. This is all for **exploration** work, not an actual gold mine. It doesn't sound like we've saved Bodie yet but we've sure forced their hand.

The immediate threat to Bodie posed by these activities has stirred many to action. SAVE BODIE! has generated written and oral comments, involving The Wilderness Society, the Attorney General and numerous experts and concerned citizens. We've solicited media coverage and urged Mono County residents to get involved. A recent cover story in the *Mammoth Times* was titled, "Mining versus Tourism: Can Mono County have its cake and eat it too?" Another local writer wrote: "When a decision finally comes down, when Bodie Consolidated [Galactic's Subsidiary] either packs up and goes home or proceeds with actual mining, the nation will be watching. Precedent will have been set, blood drawn, lines crossed." Things are getting interesting but we haven't saved Bodie yet . . .

(Continued on page 7)

THREE QUESTIONABLE- QUALITY CASSETTE TAPES NOW AVAILABLE

Low-fidelity! Ranger "in-jokes" that nobody can/wants to understand! Bad recording technique! Sloppy harmonies! Amateur instrumentation! But the proceeds go to "Save Bodie!" So, thanks for your help.



order form

I can't believe I'm willing to pay good money for this stuff, but **Save Bodie!** benefits, so I guess it's ok.
Please lemme have:

xxxxx Copies of **Dark Side** @ \$5/copy _____ Out of print
 xxxxx Copies of **Probable Causes** @ \$7/ copy _____
 _____ Copies of **Burning Bridges** @ \$7/ copy
 _____ Copies of **Lip Service** @ \$7/copy
 _____ Copies of **New Blocks on the Kid** @ \$7/copy

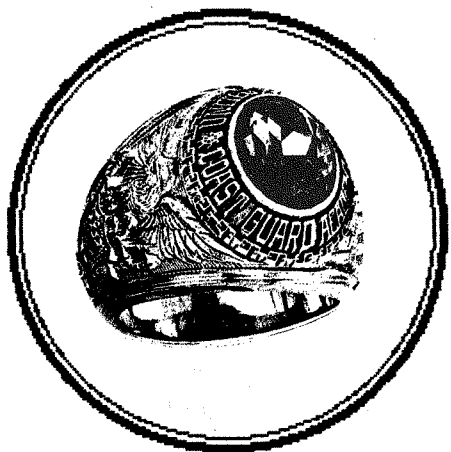
Here's a check made out to Carl Burger for the total amount.

Taxes and shipping are included with the above prices Please send tape(s) to:

- ☐ Please check if you might be interested in a live recording of campfire warmup songs, presently in the planning stages.

Carl Burger, Portola State Park, Route 2, La Honda, CA 94020

125th



Ranger Anniversary Commemorative Ring

Similar to the example shown, and made by JOSTENS, The 125th Commemorative Ranger Ring will be made of 10K gold and contain a brilliant green faceted stone. The words

"CALIFORNIA STATE PARK RANGER"

will surround the stone. One side panel will contain a badge and the dates "1866 - 1991", while the other panel will depict a modified 125th logo.

Final cost will be determined by the number of rings ordered but is estimated to be approximately \$300.00.

To order, fill out the order blank below and mail to Inland Region, P.O. Box 1450, Lodi, CA 95241-1450 ATTN: John Fehling with a deposit of \$50.00. Make checks payable to "125th Ring".

Name _____ Address _____, City _____

State __, ZIP _____, Phone _____-_____-_____

Ring Size _____

*Time is of the essence...please send your order and deposit by
November 1, 1990, if possible.*

Humor In Unicorn

by Jeff Price

Still? Yes, here is the ninth installment of **Mixed Metaphors and Malaprops**. By the way, if these don't sound odd or funny to you, have your service call my service and let's do a long lunch; I'm running out of fresh material.

Exactly: "Well, you sure put the nail on the head."

Controlled burn: "Stick that in your hat and smoke it!"

Unfair again: "He just didn't get a square shake."

Targeted: "She's got a deadly eye at the range." Useful appendages: "Yeah . . . but it's nothing to shake a leg at, either." Ouch!: "He really took the ball by his hands." (I can't explain 'em, I just record 'em!)

Excuses, excuses: "But I was operating under SOP procedure."

Equitable offer: " . . . just meet me half way and I'll always go the other nine yards." Nice gesture: "Thanks, you really saved my heart on that one." Where did it go?: "That remark goes to the very heart of the moral fiber of the human anatomy."

Into his shell: "He clammed up like an oyster." A secret passage: "Remember, this is confidential and doesn't leave my door."

Shopping anyone?: "Those Columbian drug clientels are getting too powerful."

Looks iffy to me, padre: "You don't stand a prayer of a chance in hell getting the job." Difficult people are so . . . so difficult: "He rubs my grain the wrong way." Why didn't I see that?: " . . . but communications is still the primary key to that puzzle piece."

Tough spot to be in: "He's in so deep he can't

even see the top of his own eyeballs."

Poor planning on your part: " . . . but you're putting all your marbles in one basket." Even worse shape: "You can't win but lose it!"

Power anticipated: "She'll get something done, with her clot."

Until next time, let me leave you with another gritty thought on the human perspective: "It could never happen, not in your fondest dreams."

Have We Saved Bodie Yet? (Continued from page4)

Meanwhile, the Bureau of Land Management has released a draft document, "Bishop Resource Management Plan and Environmental Impact Statement." In it, they refer to Galactic's project at Bodie as producing from 1/2 billion dollars and employing 250 - 500 workers. This plan and EIS are being reviewed now. (To get a copy, write: BLM, 787 North Main Street, Suite P, Bishop, CA 93514.) Looks like we still have a way to go to Save Bodie



So what's next? The draft EIR mineral Exploration is due in early December. There will be a public review period and a hearing. Our continued leadership and participation will be essential to ensure that all potential environmental impacts are identified and appropriate mitigation measures are proposed. You can help by requesting a copy of the DEIR from: Mono County Planning Department., P. O. Box 8, Bridgeport, CA 93517. After you've read it, please send it to me. I'll need all the copies I can get. If you'd like to do more, let me know. (I can be reached at (916) 443-3359. So, while we haven't saved Bodie **yet**, we haven't lost either. And that's a win for us and for Bodie, no matter how you look at it.

New Members

We are happy to introduce these new members to our organization. CSPRA offers a forum for sharing ideas and concerns and a means for making an impact in the field of the park professional. There is a place for each of you here, and your commitment to CSPRA requires a commitment to you from this organization. Each of us by getting involved can help the other. Again, welcome to CSPRA.

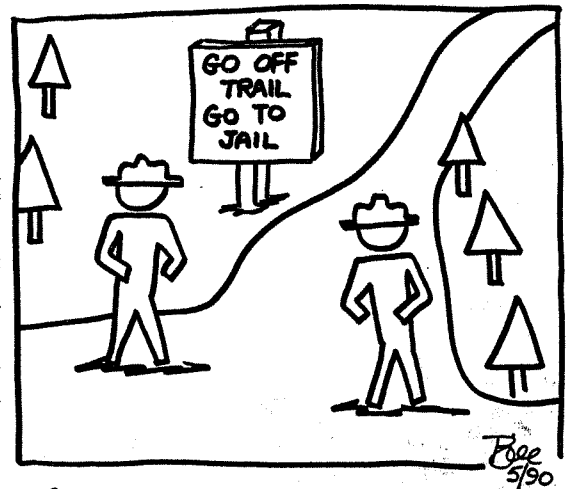
William Allison — Brookings, OR — Retired
Paula Brown — Kensington, CA — Supporting
Lynda Swenson — Big Sur — Ranger II
Thomas Wheeler — Sac Hdqtrs — Archaeologist
Gerald Weil — Channel Coast — Ranger I

McArthur Burney State Park's First Ranger Passes

Bob Breashers reports that the first ranger at MacArthur Burney died recently. Jack Allen was appointed to the position of custodian in 1928 by Colonel Wing and worked there until 1937.

Breashers indicates that Allen will be buried in the park cemetery. Donations for a grave marker are needed and may be sent to the Burney Falls Interpretive Association.

RANGER LOGO

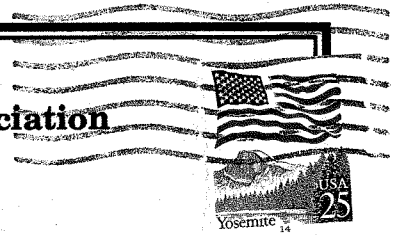
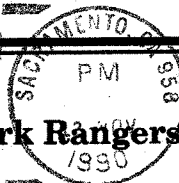


"YOU DON'T THINK WE'RE BEING TOO HARSH DO YOU?"

November

**Don't Forget
to Vote in the
CSPRA
Election!**

California State Park Rangers Association
P. O. Box 28366
Sacramento, CA 95828-0366



Mail to:

MOTT, JOHN D.
116 TREETOP DRIVE
SANTA CRUZ

CA 95060

Recycled and Recyclable