

# NEWSLETTER

california state park rangers association

Volume VI Number 26

February 1991

## Revealing The Magic

by Linda Herr Rath

Have you ever felt it before? You know, the magic. This is how it all began for me.

Several years ago, as a newly hired Interpretive Ranger at Olympic National Park's Hoh Rain Forest, I presented a very simple "everything is interrelated" basic ecology campfire program to a group of park visitors. The program had to be simple. I had only two weeks to learn everything I needed to know about a park I had never seen before so I could work at the information desk, plus create four different site-specific interpretive programs.

I chose the prettiest slides of the park I could find, found some nice music and developed a talk on the very basics of ecology as it related to the rain forest (something everyone knew about, or so I thought). I hoped that the beautiful slides, the pleasant music and the visitors' concern for the park would carry the show.

I gave the campfire program, and the audience was kind and even clapped afterwards. All I cared about was that it was over.

The next day, while out on one of the trails, a woman rushed up to me, hair flying, a wild look in her eye, yelling "Ranger! Ranger!" The Woman stopped a moment to catch her breath.

I braced for the worst . . . A lost child? An injured husband? A deranged grizzly?

"I understand," she finally exclaimed, her eyes sparkling. (Continued on page 3)

## Hi-lites of Board Meeting

1/19/91

Sacramento

In addition to the current board, those in attendance included Treasurer-elect Kate Foley, Director-elect Nina Gordon and members Susan Ross, Mike Lynch, Inez Cook, Pat Davidson, Kathy Kinzie and Pete Orchard.

**SAVE BODIE!** Pozzi reported that Galactic stock is down to less than \$1 per share — two years ago it was \$4. We haven't received a copy of the tape shot at Bodie Bluff, but our lawyer, George Martinez, is pursuing it. Cards were sent to 1500 persons requesting they make input to the review process for the Draft Bishop Resource Management Plan and Environmental Impact Statement prepared by BLM. (Continued on page 5)

## Spring Workshop

Gavilan Mountains District

April 12 - 14, 1991

Mark your calendar for April 12 - 14, 1991. Those are the dates for the workshop at the Gavilan Mountains District. Activities will include; a session on astronomy (Sense of Time) and looking at the stars at the Fremont Peak observatory; a day at Coe Ranch seeing areas that are not yet open to the public and learning about landscape restoration — removal of roads and reservoirs, cattle trespass — options and solutions, mountain lion tagging; and a half day at San Juan Bautista (Continued on page 7)

**THE CALIFORNIA  
STATE PARK RANGERS  
ASSOCIATION**

A professional association.

Executive Manager

**Doug Bryce**

P. O. Box 28366

Sacramento, CA 95828

(916) 383-2530

\*\*\*\*\*

PRESIDENT

**Bud Getty**

**Santa Cruz Mtns**

**Superintendent**

(408) 335-9145

\*\*\*\*

VICE PRESIDENT

**Rick LeFlore**

**Delta District Ranger II**

(916) 777-7705

\*\*\*\*\*

TREASURER

**Kevin Joe**

**Mendocino District Ranger I**

(707) 877-3592

\*\*\*\*\*

DIRECTORS

**Donna Pozzi**

**Supervisor of Interp. Programs**

(916) 322-8545

**Jeff Price**

**Channel Coast Dist Chief Rngr**

(805) 654-4615

**Ron Schafer**

**Orange Coast Dist Chief Rngr**

(714) 848-1566

\*\*\*\*\*

NEWSLETTER

**Doug Bryce, Editor**

\*\*\*\*\*

CAL RANGER

**David Brooks & Doug Bryce**

\*\*\*\*\*

**SAVE BODIE!** and all other  
committees use CSPRA address.

\*\*\*\*\*

## PRESIDENT'S MESSAGE

The Public Resources Code defines a state park as the following:

5019.53. State parks consist of relatively spacious areas of outstanding scenic or natural character, oftentimes also containing significant historical, archaeological, ecological, geological, or other such values. The purpose of state parks shall be to preserve outstanding natural, scenic, and cultural values, indigenous aquatic and terrestrial fauna and flora, and the most significant examples of such ecological regions of California as the Sierra Nevada, northeast volcanic, great valley, coastal strip, Klamath-Siskiyou Mountains, southwest mountains and valleys, redwoods, foothills and low coastal mountains, and desert and desert mountains.

Each state park shall be managed as a composite whole in order to restore, protect, and maintain its native environmental complexes to the extent compatible with the primary purpose for which the park was established.

Improvements undertaken within state parks shall be for the purpose of making the areas available for public enjoyment and education in a manner consistent with the preservation of natural, scenic, cultural, and ecological values for present and future generations. Improvements may be undertaken to provide for recreational activities including, but not limited to, camping, picnicking, sightseeing, nature study, hiking, and horseback riding, so long as such improvements involve no major modification of lands, forests, or waters. Improvements which do not directly enhance the public's enjoyment of the natural, scenic, cultural, or ecological values of the resource, which are attractions in themselves, or which are otherwise available to the public within a reasonable distance outside the park, shall not be undertaken within the state parks.

State parks may be established in either the terrestrial or underwater environments.

If this is the legal definition of a state park:

- 1) How many cows per acre are allowed?
- 2) How many miles of single track trail should be available for mountain bikes?

(Continued on page 4)

The NEWSLETTER (ISSN 0887-9176) is published by CSPRA, P.O. Box 28366, Sacramento, CA 95828.

The NEWSLETTER'S Editor is Doug Bryce; contributing editors and authors are as noted. Articles are welcome, 1000 words or less. All submissions become the property of CSPRA and may be edited without notice. **The deadline for articles is the 15th of the month prior to publication.**

---

## Revealing The Magic

(Continued from page 1)

---

"I understand what you were talking about last night at your program. I just took a walk and I **saw** the connection, how the old dead logs and the mushrooms and the beetles and the moss and the trees and the animals are all dependent upon one another and interrelated to each other. I saw it and I understand!" (You'd have thought I'd have revealed the mystery of life to this crazed woman. Come to think of it, perhaps I had.)

Now this was magic. This was the first time I remember ever having felt it in a teaching situation, but it was definitely not to be the last. I was hooked.

Ever since that day in the rain forest with that crazed woman who finally understood, I have tried to learn all I could about interpretation, what it is, how it works, new techniques and methods so that I can continue to reveal the magic.

Every year, hundreds of professional natural and cultural history magicians, better known as interpreters, gather together to reveal their own successful techniques and to share their concerns, wishes and experiences in their field of expertise.

This year's gathering, sponsored by the National Association for Interpretation, was held in Charleston, South Carolina. Over 700 field interpreters and managers from natural parks, historic sites, zoos, botanic gardens, museums, and outdoor schools across the U.S., Canada and England attended. Concurrent workshops, field trips, keynote speakers and social events highlighted the week-long conference.

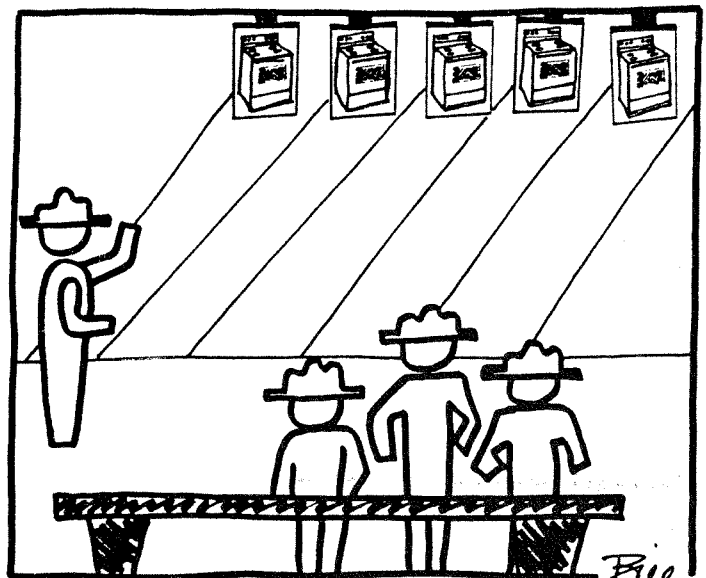
For me, the most exciting part of the conference was observing and experiencing the magical talents of three very skillful interpreters.

Rudy Manke (of PBS's Nature Scene) re-

vealed the magic of nature through the use of natural objects, stories and statements such as . . . "Animals can change into other animals. Don't believe me? What happens to a mouse when it is eaten by a snake? It is absorbed by that snake, thus becoming a part of it. The mouse has changed into a snake!" Think about it.

David W. Stokes, of the Schlitz Audubon Center, Milwaukee, Wisconsin, revealed the magic through a simple origami jumping frog and his silly, bizarre but quite memorable jingles, rhymes and sayings . . . "This is a plant, so tiny and small, that it hardly shows in the moonlight at all; But! This is a rabbit — hopping, hopping, he smells the plant and now he's stopping; But! There sits an owl with big round eyes . . ." You get the picture.

## RANGER LOGO



Finally, Bill Lewis, author of *Interpreting for Park Visitors* and an interpreter for many years, revealed his magical methods through the use of involvement-oriented, group participation activities. After each activity, he'd ask "So what?" And we would have to figure it out.

Through enthusiasm, knowledge and skill, (Continued on page 4)

---

## Revealing The Magic

(Continued from page 3)

---

these interpreters and others shared with us interpretation at its finest, evoking a passion in all of us often squelched by bureaucracy, long hours, never enough time or money, obnoxious visitors and stressful lives.

Why do I attend these conferences? To meet with old friends and make new ones. To remind me why I became a ranger. To have fun. To share ideas and feelings. But most of all, to continue to learn all I can about interpretation so that I can continue to reveal the magic of nature and create the magic when someone suddenly understands.

Steve Van Matre, in his book *The Earth Speaks*, wrote "The earth speaks in magic, the magic of rainbows and waterfalls and frogs. It is the magic of interacting sunlight and air and water and soil creating a constantly shifting kaleidoscope of wondrous riches on our turning planet."

Who better to reveal this magic, than the magicians of forest and field, the professional interpreter.

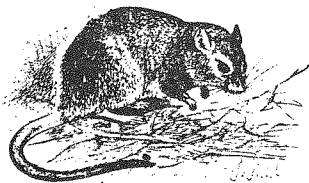
---

## President's Message

(Continued from page 2)

---

- 3) How many competitive race events (foot, bike, equestrian) should there be per year?
- 4) How many back country trails should be open for running dogs?
- 5) How many softball fields, volleyball courts and PAR courses are appropriate?



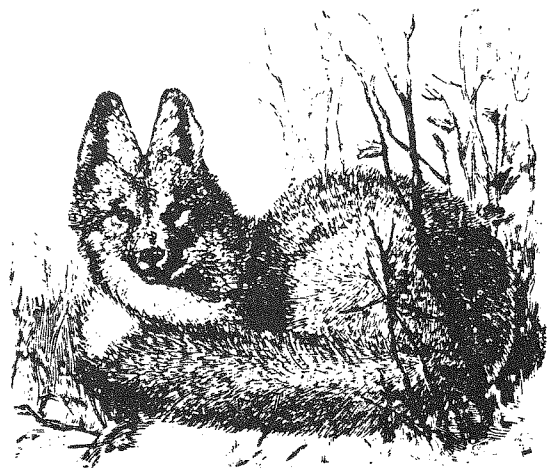
## SAVE BODIE! Update

by Donna Pozzi

As you can see from the board meeting notes, CSPRA's SAVE BODIE! Committee is still at it. In last November's update you read about a draft EIR that was due to be released in early December. This document, which Mono County is requiring before allowing Galactic to do more exploratory mining on lands under county control, is now expected in March.

We're also doing remarkably well in the publicity department. In December, a nationally syndicated t.v. travel show featured Bodie and our efforts. Now a network morning program ("CBS This Morning") is working on a Bodie story. "Miners haunt a ghost town" appeared in January-February *Sierra* magazine. And, watch *Backpacker* for its upcoming story. It's heartening that we've been able to generate and sustain so much media interest over the past two years.

The second issue of the *SAVE BODIE! News* will be out this spring. If you'd like to receive it and other mailing, or volunteer to get involved, please call or write. Use the CSPRA p. o. box or phone number.) One of our newest volunteers is retired member Inez Cook. She's coordinating our expanded t-shirt sales effort. If you have ideas for her or want to help, drop her a note, c/o CSPRA. Thanks, Inez!



---

## Board Meeting

(Continued from page 1)

---

We joined the National Trust for Historic Preservation and immediately applied for a \$2500 grant to print an advocacy plan for Bodie to be used in dealing with the Congressional delegates from California. Cindy Woodward and Bryce will be preparing a mailing to all of the California Congressional delegation. The board approved of SAVE BODIE! preparing a new contract for solicitation of donations.

**125th Anniversary** Susan Ross & Mike Lynch reported on planning activities. The many activities that are going into this celebration are coming together. The board voted to donate \$1,000 to the 125th to help with the ranger film.

**1992 Conference** It was agreed that we would meet in the greater Anaheim area. Bryce will prepare a list of facilities in that area for a decision at the May board meeting.

**Surplus Lands Bill** Murphy will try to get Presley to carry this legislation as part of his surplus lands bill.

**New Officers** Bryce proposed that the rules be suspended allowing the newly elected officers and board members to take office on February 15 and that this action be recorded in the Newsletter. It was so moved and passed.

**Presentation by SPAGLR** Representatives — Pat Davidson, Kathy Kinzie and Pete Orchard. Davidson led a discussion relating to opening communications between the two organizations and on past differences. President Getty appointed Gordon as liaison between CSPRA and SPAGLR. It was agreed that the Department's policy on the use of the uniform by off-duty employees should be consistent.

**CAL RANGER Foundation** A committee of CSPRA and PRAC members have created plans for a new foundation to assist the two organizations in fund raising. The organization will be a non-profit charitable organization which will be able to accept tax-deductible contributions. It was decided to change the name to Park Stewardship Foundation of California. The board supported the proposal. Initial appointees to the organization board are Inez Cook and Rick Parmer.

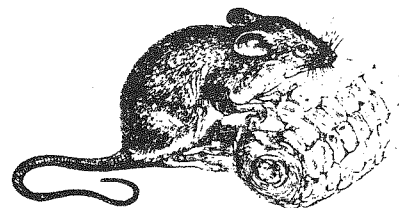
### Reorganization of Board of Directors

Murphy proposed that the board be enlarged to include geographical representation. He further suggested that our constitution and bylaws be reviewed and revised. President Getty appointed Murphy to head committee to study this idea and report back. Other committee members chosen by Murphy were Ball and Lynch.

**Legislative Workshop** Murphy will make arrangements for a one day legislative workshop in Sacramento this spring.

**Cooperating Association Committee** Gordon reported that the Department had indicated that the association guidelines were being put out in manual form and that there would be ample time for field and interested parties to review and comment. The Committee will review and make recommendations to the Board.

**Next Meeting:** April 12 - 14 at workshop if enough of the officers can be there. A meeting will be held May 20 at Big Basin, and the board will stay over for the kick-off of the 125th anniversary celebration.





## An Interview With Richard L. Menefee

by Bill Krumbein

*This is the third in a series of interviews by Ranger Bill Krumbein as a part of the 125th Ranger Anniversary "A Visit With . . ." project.*

By high school age, Dick pretty much knew what direction he wanted to go. It says so in his yearbook — an interest in forestry and parks. He was born in Santa Cruz, California (10/4/33), and grew up there, with Seacliff State Beach nearby.

In 1952/53, he was told that he was not qualified to take the Ranger I exam. Later on, he questioned the local state park people and they said he did have the qualifications; but by then it was too late to apply. So he had to wait for the next exam period which didn't happen until 1956. During this time, Dick worked at a variety of jobs with CDF and the Santa Cruz City Parks Department.

In 1956, exams were being offered for both State Park Attendant and State Park Ranger I. Dick took both exams. In October, 1956, he began his full time DPR career, one that would last for more than 31 years.

Park Attendant (Seas.) New Brighton	6/55 - 9/55
Park Attendant Jed Smith	10/56 - 12/58
Ranger I Morro Bay	1/59 - 6/63
Ranger I Fort Tejon	7/63 - 9/65
Ranger II Doheney	10/65 - 8/70
Ranger III Big Basin	9/70 - 1/72
Rngr IV/Mgr II Sonoma Area	2/72 - 9/76
Mgr II/Mgr III Sacramento	10/76/3/78
Mgr III/Mgr IV Pajaro Coast	4/78 - 7/87

Asked what his favorite assignment was, Dick said it was when he was the Area Manager of the Sonoma Area. The great variety of units made things interesting. And I can vouch for the fact that Dick hiked and/or drove over every trail in every park in the Area. It was his first assignment as Area

Manager . . . that also made it memorable. He also thoroughly enjoyed his Management Analysis assignment, and is particularly proud of doing the DPR 1977 Fee Study.

Dick's least favorite assignment, and the end of his career, was at Pajaro Coast as District Superintendent. His professional views vs. DPR's political stance became a cause of stress.

He went on to talk about the obstacles DPR has because we, as park professionals, are stymied by political whims. We used to have a solid professional (organization) base, that is, until Jack Knight retired. Then the DPR began converting to a political organization base, where it is today, with the Legislature and political appointees running the DPR. A case in point, Dick explained, is the example that political appointees now extend down to our Region level, where in the past, there were only three at the highest DPR levels in Sacramento.



Dick is most proud of his accomplishment initiating the Greater Monterey Bay Aquatic Safety Committee, with Senator Henry Mello's sponsorship. This project included federal, state, two counties and special district and organization agencies to initiate a year-round lifeguard program in the Pajaro Coast District.  
(Continued on page 7)

---

---

**Richard L. Menefee**  
(Continued from page 6)

---

---

He was also commended by Headquarters and the Park Commission for his job as Field Coordinator in the 1981 Medfly Campaign (the DPR's first "swat" team?).

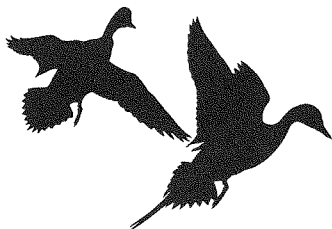
Dick felt strongly that the DPR's greatest achievement was the establishment of the Mott Training Center.

Advice to the new ranger? Dick thinks it's best to focus upon the whole job instead of one aspect. Be open, receptive. As a ranger, don't overlook walking through a restroom once in a while. Pick up litter when you see it. Serve the public in many areas, visit with them, help them enjoy their visit, don't limit contacts to just enforcement.

In 1989, Dick suffered an unfortunate accident. He was working for an "airporter" shuttle service, training and evaluating a new driver, when a huge 15-pound disintegrated tire (from a heavy equipment vehicle) flew through the windshield, striking him in the left temple. There were some tense times in the hospital.

Today Dick continues his recovery, including physical therapy, and in retirement appreciates each day. The accident points out all too clearly that there may not be a tomorrow.

He and Anabel live in Sonoma and enjoy travelling in their 26-foot motor home. A few years ago, they also vacationed in Australia and New Zealand. For many years, they were actively involved in the fine china business (Lenox), but are now giving up the business so that they can be free to enjoy their retirement.



---

---

**Spring Workshop**  
(Continued from page 1)

---

---

learning about furniture restoration and about historic wagons.

Other activities include a living history chuck wagon Saturday evening, camping out with a cookout breakfast the next morning at Coe. Camping overnight at Coe and Fremont peak optional. Mexican style lunch on Sunday at San Juan Bautista before departing for home. We expect to have a very good time with some excellent educational programs based on the resources of this district.

Registration information will be out about the first of March.

**Humor in Unicorn**  
by Jeff Price

Trepidations! The twelfth column of **Mixed Metaphors and Malaprops** is here. I guess that means I've been doing this a year! I thought I'd run out of new material in a few months, but you of much, nay abundant perversity, continue to feed the one-horned monster this column has become . . . sorry . . . well anyway, on with the great goofs.

The conclusion offered after problems are discovered upon the boss' return: "Sometimes when no one is watching the farm, the cats play."

When an issue becomes difficult: "I wouldn't touch that with a hot potato." A heavy load: "Why do these things always end up getting put on my burden?"

Hot duo: ". . ., you know those two; one's flame and the other one's fire . . . when they get put together the place burns up." Their what?: "They really stuck their head out on this one."

(Continued on page 8)

## New Members

We are happy to introduce these new members to our organization. CSPRA offers a forum for sharing ideas and concerns and a means for making an impact in the field of the park professional. There is a place for each of you here, and your commitment to CSPRA requires a commitment to you from this organization. Each of us by getting involved can help the other. Again, welcome to CSPRA.

Jill A. Lachman — Supporting

### **Humor In Unicorn** (Continued from page 7)

Ability to slip along with others: "I'm conducive to that." Used advice: "I think I need a second hand opinion."

Cetacean, I thought it was a Canis: They are just throwing him to the whales." So crabby: "I heard he was fooling around in Tijuana and got a case of the clams." Maculata non grata limelightus, it seems: "Don't try to put the spot on me again."

Aging conservationist's advice to a young whippersnapper: "You can't try to save all the world's problems."

Let me leave you this month with a poignant comment on our senior citizen explosion, "Every year it seems like there are more and more older people."

## February

### **Spring Workshop** **April 12, 13, 14**

• • •

**See Stars at Fremont  
Peak**

• • •

**See What Others Can't  
at Henry Coe**

• • •

**See History Made at San  
Juan Bautista**

**(See page 1 for more  
information!)**

**California State Park Rangers Association**  
**P. O. Box 28366**  
**Sacramento, CA 95828-0366**

**Mail to:**