

NEWSLETTER

california state park rangers association

Volume VI Number 29

May 1991

Save Bodie! Update

by Donna Pozzi

Over the last month, we made some important progress in our efforts to SAVE BODIE! The grant-writing talents of Nina Gordon and Cindy Woodward were rewarded with the announcement on March 25 that CSPRA's application to the Preservation Services Fund had been approved. The support and financial commitment of the National Trust for Historic Preservation are a significant achievement for the SAVE BODIE! Committee. The \$2,000 matching grant will be used to prepare an "Advocate Plan" in which we will describe our vision for Bodie -- a vision which does not include an open-pit mine. Joe Engbeck and a team of other committee members and volunteer experts will be developing this document.

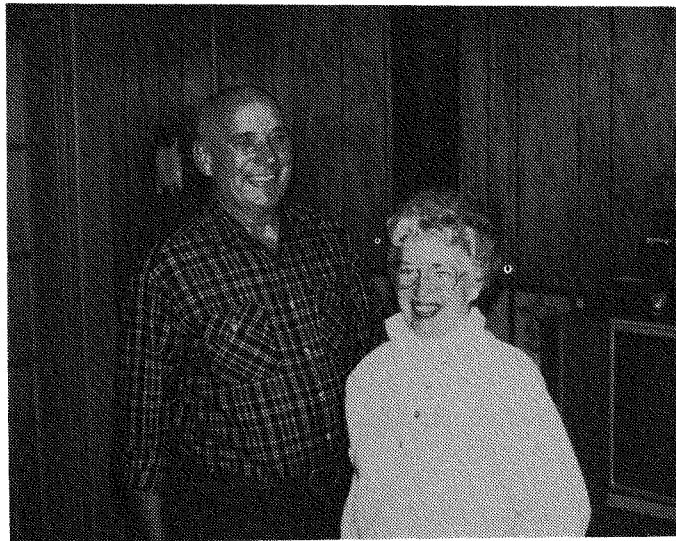
The March CSPRA newsletter included excerpts from congressional testimony about Bodie, as an example of conflicts between historic sites and mining. The same congressman who chaired that meeting, Nick J. Rahall (D.-W. Va.), was in Reno recently conducting a field hearing on his bill H.R. 918 to reform the 1872 Mining Law. I attended the hearing to learn more about congressional hearings, as well as the issue Reader's Digest called "The Great Terrain Robbery." Hundreds of miners and their families were bussed in from all over the West to stage a demonstration at the hearing. The governor of Nevada gave testimony, along with 45 other witnesses. There was a mix of environmentalists and miners, many familiar faces. The hearing lasted into the evening, but by staying until the end, I had an opportunity to talk with Congressman Rahall about Bodie. When the time comes for Congress to act regarding Bodie, his support will be critical, since he chairs the Subcommittee on Mining and Natural Resources.

Among the national organizations that have been helping us is the Washington, D.C.-based Mineral Policy Center. President Philip Hocker, in Reno for the hearing, made a special trip to Bodie to learn firsthand about our cause. It's safe to say that Bodie won another very valuable friend in Hocker. The role of national organizations like the Mineral Policy Center, the National Trust, The Wilderness Society, and others, is of increasing importance to us. We need to (Continued on page 3)

A Visit With Jim Greene

by Carl Nielson

On Saturday, January 19, 1991, I met with retired ranger Jim Greene and his wife Joyce at their quaint turn-of-the-century home along Highway 33 between Santa Nella and Gustine. Joyce played an active role in the interview; her participation in the interview is a reflection of the extent a ranger's spouse is, by choice and otherwise, a vital character in the history of a ranger. Joyce recalled park people, park philosophies, park stories, and park moves just as readily and anxiously as Jim shared his park-related recollections. Indeed, a ranger's family is as vital to ranger history as the individual ranger.



Jim and Joyce Greene

Jim grew up in parks in and around Visalia where his father was an employee in county parks. Sequoia-Kings Canyon National Parks were nearby, and summers were often spent up there. "I used to cut school and head for the hills," Jim stated. As a high school student during the summers of 1949 and 1950, Jim worked for the concessionaire in the Giant Forest area of Sequoia National Park.

Jim's early exposure to parks directed him toward a park-oriented career. (Continued on page 3)

**THE CALIFORNIA
STATE PARK RANGERS
ASSOCIATION**

A professional association.

Executive Manager
Newsletter Editor

Doug Bryce
P. O. Box 28366
Sacramento, CA 95828
(916) 383-2530

PRESIDENT
Bud Getty
Santa Cruz Mtns
Superintendent
(408) 335-9145

VICE PRESIDENT
Rick LeFlore
Delta District Ranger II
(916) 777-7705

TREASURER
Kate Foley
Lake Oroville, Chief Ranger
(916) 538-2208

DIRECTORS
Donna Pozzi
Supervisor of Interp. Programs
(916) 322-8545
Nina Gordon
SPS Planning
(916) 322-8710
Ron Schafer
Chino Hills Dist. Sup't.
(714) 780-6222

CAL RANGER
David Brooks

SAVE BODIE! and all other
committees use CSPRA address.

PRESIDENT'S MESSAGE

See! I told you things would get better.

Governor Pete Wilson and Resources Secretary Douglas Wheeler have announced a 14-point program called "Resourceful California," that includes both legislative and executive proposals for a resources bond act, forestry, riparian habitat, wildlife management, wetlands, parks and historic resources, farmland and coastal resources. I'd like to quote some of those elements for you:

Resources Bond

Enact California Heritage Lands Bond — totals \$628 million and meets needs for 2 years; slated for June, 1992 ballot.

\$300 million for native forest lands, including Headwaters.

\$125 million for Parks

\$138 million for Coastal, Tahoe, and Santa Monica Mountains conservancies.

\$15 million for Riparian Habitat.

\$40 million for Wetlands.

\$10 million for Threatened and Endangered Species.

Parks and Historic Resources

Increase local opportunities for protecting parks and open space by authorizing majority vote approval on local measures.

Meet increasing demands on state parks by improving park infrastructure, resource stewardship, and visitor interpretation programs.

Improve protection of cultural and historical resources by creating a state register of historic places.

The two-year California Heritage Lands Bond for \$628 million is the centerpiece of the 14-point program. The \$23 million cost of the other components will come from special accounts, reallocations among existing programs, and private sector contributions. This should help.

Bud Getty, President

The NEWSLETTER (ISSN 0887-9176) is published by CSPRA, P.O. Box 28366, Sacramento, CA 95828.

The NEWSLETTER'S Editor is Doug Bryce; contributing editors and authors are as noted. Articles are welcome, 1000 words or less. All submissions become the property of CSPRA and may be edited without notice. **The deadline for articles is the 15th of the month prior to publication.**

Save Bodie!

(Continued from page 1)

cultivate the support of these effective, well-respected groups to gain success in Congress.

If you are a member of any environmental or preservation organizations, request that they get involved to help Bodie. If you haven't yet, WRITE LETTERS to your lawmakers in Congress:

U.S. Senate
Washington, D.C. 20510

U.S. House of Representatives
Washington, D.C. 20515

Tell them why you are personally concerned about Bodie and ask them if they will support legislation that will protect Bodie.

We've accomplished a lot in the past couple of years. Won't you join us and contribute to our future successes?

A Visit With Jim Greene

(Continued from page 1)

Following an AA degree in general education at the College of Sequoias in 1956, Jim continued his education at Humboldt State University of California. He earned a BS in wildlife management in 1959. "I took wildlife management," Jim explained, "because it was the broadest biological science course I could find -- I had no intention of going into Fish and Game, or something like that; I always wanted to be in parks, federal or state."

Two years before graduation, he married Joyce. Joyce announced to me that she had a P.H.D.: "Providing Husband Degree" is the explanation for the abbreviation. That's not to say Jim wasn't employed while going to school at Humboldt. During the summers of '58 and '59, he worked as a Seasonal Park Aide at Humboldt Redwoods -- Stevens Grove in '59, Hidden Springs the following year. In that first year, he worked with fellow park aide Hal Terry. The friendship between the Terrys and Greeses that began in '58 continues today. Hal retired as a Manager III from San Diego and currently resides in Hydesville. As stewards of Stevens Grove, Jim and Hal competed in operating and maintaining the unit. The competition was healthy with the public as beneficiaries. Ironically, Jim's first supervisor was Michael O'Rourke. Mike would later be supervised by Jim at Four Rivers.

In October of 1959, Jim obtained a permanent position with the State Park System as a State Park Ranger I at S. P. Taylor SP. A State Park Ranger I back then received \$399.00 per month.

Jim enjoyed interpretation, especially interpretation with children. He spoke of the importance in "dealing with kids and sparking their interest and turning them on to the outdoors."

Jim spoke of special projects delegated by the Department outside of state time. Trail construction was an example of such a project. The state was taking advantage of the willingness of individuals to work in parks. Hence the subsequent development of labor contracts addressing such issues.

Jim's climb up the promotional ladder was gradual by design. He contrasted his approach to one that has a rapid climb often ending in a long plateau. Jim's approach, in his own words, was "a lot more fun." In such an approach, "You develop certain skill levels where you feel confident and proficient in the job you are performing." The confidence and proficiency would prepare you for the next promotional level.

One of Jim's earliest supervisory roles was the position of Park Supervisor at Jack London SHP/Sugarloaf Ridge SP. Jim characterized it as a fun job with a large realm of responsibility -- more so than positions higher in the promotional ladder. As the overseer of interim operations of Silverwood Lake, Jim recalls he and James Whitehead standing on the (Continued on page 4)

dam prior to the unit's opening with Whitehead announcing, "In two weeks we're going to open this thing." At this time there was nothing more than a paved parking lot at Silverwood. Much was accomplished and on opening day there was traffic backed up from the entrance to the highway access, a distance of thirteen miles. Echoing the statements made by retired rangers Clyde Strickler and Jake Lusky in another interview I conducted, Jim took great pride in seeing the evolution of a park from an undeveloped unit to a facility of public use. Similarly, Jim is critical of the Department's emphasis on acquisition and its corresponding lack of development. The San Luis Island Project is one such example; he refers to it as "a black eye of the Department." The unit was acquired in 1980/81; to this date, the unit remains unclassified and undeveloped.

Jim's early goal with the State Park System was to work in a Sierra park. The goal was never fulfilled. However, the Heart Bar Area (no longer part of the State Park System) of the San Bernardino Mountains was a quasi-Sierra park with its remoteness, conifers, mountain topography, and winter snows. Referring to the Sierra, Jim states, "I still want to be in those mountains; (Continued on page 4)

A Visit With Jim Greene

(Continued from page 1)

I'm closer than ever now with retirement." In addition to their Central Valley home, he and Joyce own property in the Sierra foothills near Coarsegold, south of Yosemite.

Jim has a great sense of personal accomplishment in obtaining the Resource Ecologist position at Monterey (1977-81) in a temporary break with the ranger/peace officer ranks. He opted to test for a Resource Ecologist position in 1977 despite being out of school since 1959. The forestry classes he took at Humboldt paid off as he did extremely well on the test and obtained the Monterey position. He acknowledged the Department in its movement toward resource management and the value of providing direct technical assistance to individual units by resource personnel, including those in the Resource Protection Division.

Jim is critical of the degree of focus on law enforcement by the state park ranger of his latter years and in his perspective of the ranger today. He spoke of "attitudes that developed" in some rangers, mentioned the inclination to issue citations over "interpretive enforcement," and had difficulty in justifying the cost of "\$20,000 patrol cruisers." Yet he recognized the need for enforcement training and equipment "once you strap a gun on a ranger's hip in order to ensure the safety of that ranger and the public."

Jim's message to the rangers of today is "keep the faith," adding that "the faith isn't in the pocketbook." "Good people will always surface," Jim announced, further stating: "They'll work within the limitations and perform as they always have."

Jim and Joyce have two daughters, Lindy and Debbie. They're both married and reside in Sacramento. No grandkids yet, with a future grandfather commenting: "They're slow." Joyce works as a school nurse in Livingston -- she's not ready for retirement. Jim often takes a morning ride into Santa Nella for coffee and the AM newspaper at Pea Soup Anderson's. Jim and Joyce have plans to sell their country home on Highway 33 and move to their property in the Sierra foothills. Joyce, wants to secure a school nurse position in the Coarsegold area prior to this move. A house will need to be built as well. They have nine acres up there. When the move officially occurs, Jim will once again be in the mountains that inspired him to take a park-oriented career. His service as a ranger in the State Park System is saluted and recognized. Best wishes to Jim and Joyce during this 125th Ranger Anniversary!

Comments Requested on the Cooperating Association Manual

The draft Cooperating Association Manual is out for review. The Draft Manual has been sent to each District and cooperating association.

The CSPRA Cooperating Association and Volunteer Management subcommittee will be reviewing the draft manual and submitting comments to the Department. We encourage any input from CSPRA members.

This is a very important manual which will constitute Department policy. It contains (draft) cooperating association contract language. Policies and guidelines regarding sales, the role of the DPR liaison, insurance requirements, and other issues are also included.

CSPRA will make a copy of the draft Cooperating Association Manual available to any member who wants one. Please contact CSPRA.

We welcome your ideas. Please relay comments to the Cooperating Association committee chair, Nina Gordon, c/o CSPRA or call Nina at 916/455-3450 (evenings). All comments need to be received by June 30, 1991.

Comments by Douglas P. Wheeler Undersecretary for Resources Excerpt from State Park and Recreation Commission Meeting of March 7, 1991

Thank you, Chair and members of the Commission, for the invitation to join you this morning. Many of you know that my background has been in resources management for more than 20 years and that the forefront of my interests have been parks at the national and state levels, and the local level too.

Most recently I have worked at the Conservation Foundation which made its mark in large part on the issues pertaining to park resources, park management relationships between parks and adjoining communities, personnel issues, the whole range of questions which lead, I hope, to satisfactory answers in protection of these very significant resources at the local, state and national levels. So I come to the (Continued on page 6)



Retired rangers gathered in Tiburon in March to reminisce about their park careers. Filmmaker Chris Chater directed the film filming assisted by CSPRA member and assistant director, Nedra Martinez. The film will premiere at the Joint Conference in October. CSPRA has donated \$1,000 to the production costs.



Photo Captions:

Top — Don Meadows, Petey Weaver, and John and Alice McKenzie.

Center — Thelma Kishbaugh, Alice McKenzie, Petey Weaver and John McKenzie.

Bottom — Alice McKenzie, Petey Weaver and John McKenzie.



Comments by Douglas P. Wheeler

(Continued from page 4)

Commission with my new responsibilities, first of all fully prejudiced in favor of the State Park System, and the second, understanding a lot of the current pressures with which we will have to cope. The Governor shares this enthusiasm for the Park System and has made it his priority in our discussions about future directions of the Resources Agency. Very soon you will see quite concrete evidence of that interest. We are working on a packet of legislative initiatives that have been developed with the assistance of the departmental staff, and I think they will reflect that the Governor is prepared not only to make a commitment to Parks, but to support that commitment in real terms.

I have been very thoroughly briefed by Henry and his staff.

I had the pleasure in January of being briefed by the staff. Although I may not have a deep or wide understanding, I do have an introductory understanding of the department's responsibilities, its issues, and its relationship with you all.

My first responsibility on behalf of the department was to defend a fee increase, which is not entirely popular. Henry and I went to the Coastal Commission in February, and we hoped they had changed their minds on whether or not they had the authority for establishing fees along park and beach units in Northern California. We failed in that, I have to report. We may have lost the battle but I hope we win the war. It is an ongoing discussion with the Commission, but it does underscore a very important issue here. The department, as do all the departments in the Agency, is increasingly dependent on these kinds of earmarked funds and revenue sources. The Director, in imposing these fees was responding to a mandate from the Legislature that defined additional sources of revenue to close an increasing budget gap. Throughout the Resources Agency, which has a budget of \$2.7 billion, fully 65% of our fees are now earmarked to specific projects from specific sources for specific purposes. In one way that is good. It insulates us from some of the pressures on the General Fund which are phenomenal at this point as you might imagine with a \$7 to \$10 billion deficit. But at the same time it does deprive us of some of the flexibility we would like in developing new programs and reordering priorities to reflect current circumstances.

Somewhere in between those two we need to find ways in which to fund a program and fund it adequately.

Let me just say with respect to funding that I was struck by presentations we received during the transition and thereafter that there is inadequate funding for parks, and that is in large measure due to two phenomena I think. One was what I have already discussed, general short fall in state revenues across the board, but second, the fact we have not had adequate new bonding authority with parks in several years as the result of failure of the proposition last year. We have provided some additional authority and additional money in the long run. We have the need to re-address the balance between land acquisition which has been a priority for a long time and a very important priority. It is equally important that once having acquired these lands to protect them. It is really quite important we also have the staff to provide the accessibility the public expects of us to build facilities and repair these facilities, of which maintenance has been too long deferred. The need for revenue is the principal question that will determine the quality and character of the Park System we leave to the next generation. It is a very high priority for me and for the Governor and we are working today on addressing that question in anticipation of the Legislature's actions.

RANGER LOGO



In closing, I have worked with the federal government and non-profit organizations concerned with this set of issues. I value very genuinely the participation of groups like this one who can bring to us, and the Director and his staff, a perspective that we don't always have working from inside. We count on you for some creativity, criticism where appropriate, for advice and for a close working relationship. You represent the people of California and the users of the system it is our great privilege and responsibility to manage and protect. I welcome your participation and thank you for the sacrifice you make in attending these monthly meetings. I want you to know I am available to you, and I would welcome your comments collectively or individually and certainly look forward to working with all of you.

Recent CSPRA Activities

Mushrooms

Vice president, Richard LeFlore, sent a letter to Carl Chavez and testified in favor of the Department's policy of restricting the gathering of mushrooms. He indicated that it was unclear what effect unregulated collecting of mushrooms would have on the mushrooms and that collecting of mushrooms was an incompatible commercial activity. He also indicated the concern for the surrounding vegetation from people going off trails for collecting purposes.

AB 240 (Peace)

Joann Ellisson testified before committee in favor of this bill that would create regulation of hazardous and solid waste disposal on Indian Reservations. Currently a disposal site is proposed for the Los Coyotes Indian Reservation that would threaten the safety of either the Coyote Creek drainage or the Palm Canyon drainage in Anza Borrego Desert State Park.

Scholarships

Since January 1 scholarships have been provided to:

Kevin Joe, \$150 to attend 4WD training at West Valley College.

Mike Lynch, \$200 to attend PRAC annual workshop at Yosemite.

John Muench, to study bow making from a renowned bow maker in Texas.

Monterey Bay Marine Sanctuary

In September 90, Gary Strachan wrote the CSPRA support correspondence and testified in support of this proposed marine sanctuary. In January he drafted a letter for Getty's signature in support of Assemblywoman Spiers' bill supporting the national designation.

Salton Sea

Member James Ritter sent an article and a resource evaluation form to me in January relating to the Salton Sea refuge being degraded by adjacent land uses. Mr Ritter is concerned about wildlife and plants species that are decreasing within and around the lake. He requested CSPRA to request the Resources Director to issue a policy statement on how serious the situation is and take action on solving the problem soon. A draft letter is being prepared by Gary Strachan's Resource Integrity Committee.

Tomales Bay

Carlos Porrata reported a trespass in Tomales Bay State Park. Strachan requested he prepare a draft

letter for CSPRA to send to Director Agonia.

Desert Protection Act

The California Desert Protection League requested that we again support the California Desert Protection Act. It is believed that Senator Seymour will resolve differences with Senator Cranston that will allow the act to pass.

Del Norte County Wilson Creek Highway One Bypass

This project would occur adjacent to and within the Del Norte Redwoods State Park. The DPR has concerns about the project in reference to historic and natural resources.

Attention All Philatelists! 125th Ranger Anniversary Commemorative Covers and Postal Cancellation

Envelope designs and a postcard will be available for sale during the 125th Ranger Anniversary Kick-off festivities at Big Basin State Park on Tuesday, May 21, 1991.

Designs include a portrait of the first state park ranger, Galen Clark, and cartoonist Phil Frank's Anniversary rendition. Frank Balthis, a San Mateo Coast District ranger, designed the commemorative photo postcard. Mr. Frank has generously agreed to sign a limited number of covers for us, which will increase their philatelic value.

All covers will be postmarked with the 1934 El Capitan 1 cent stamp, the Gold Discovery/Sutter's Mill 3 cent stamp, and last year's Flag over Half Dome 25 cent stamp.

A commemorative cancellation stamp has been developed by the U.S. Postal Service for us.

Anyone wishing to submit covers to the Boulder Creek Post Office, Pine and Forest Streets, Boulder Creek, CA 95006 should do so before May 21, 1991.

Covers sold at the kick-off festivities may be addressed and mailed at the time of purchase.

Remaining covers and plain postcards will be available for sale at all 125th Ranger Anniversary celebration events as long as supplies last.

Hope to see you at Big Basin!

Kathryn Yee, San Francisco District
Craig Engel, Calaveras District

New Members

We are happy to introduce these new members to our organization. CSPRA offers a forum for sharing ideas and concerns and a means for making an impact in the field of the park professional. There is a place for each of you here, and your commitment to CSPRA requires a commitment to you from this organization. Each of us by getting involved can help the other. Again, welcome to CSPRA.

Clyde W. Ray, Retired, Marina, CA
Holly P. Huenemann, Portola SP

Clyde E. Strickler, Retired, Los Banos, CA
Sunny C. Bell, Sacramento - Interp Svcs

"Approximately 360,000 square miles of the three million square miles of land in the contiguous forty-eight states are in two kinds of public ownership.

"About 180,000 or six percent are in parklands.

"The other six percent is paved. . . ."

From Roderick Nash, *The Value of Wilderness*

May

Calendar

Board Meeting Big Basin	5/20/91
125th Kick Off	5/21/91
125th Celebration	9/30-10/3/91
Nominating Committee meeting	10/91
Elections	11/91
New officers take office	1/1/92
1992 Annual Workshop	3/16 - 19/92

California State Park Rangers Association
P. O. Box 28366
Sacramento, CA 95828-0366

Mail to:

Returned For Better Address

