

NEWSLETTER

california state park rangers association

Volume VI Number 41

August/September 1992

Mt. Diablo: The Public's Park, Or One Man's Dude Ranch by Wayne Harrison

For some DPR employees, it's the issue that won't die: cattle grazing on Mt. Diablo. They have been ranging in various portions of the park for decades, but the Mt. Diablo General Plan, approved in 1988, called for them to be restricted in both range and number. All that was needed was the clear enforcement of the provisions of the plan. It should be an easy matter; the state owns and manages the land, the state has a publicly accepted plan, and the state has determined that the cattle are no longer welcome. Substitute "private land owner" for "the state" and no one would bat an eye. There are only two problems: the cattle grazer thinks he's entitled to use the land as he sees fit, and this is no ordinary cattle grazer: Rancher Tom Brumleve has mounted a public relations effort that befits a presidential campaign, and is just about as dirty.

First, he terrified the local populace into believing that his cattle are all that stands between their homes and an "Oakland Hills" type fire that could explode from the "mismanaged" lands of Mt. Diablo. This simply is not the case. DPR has developed and initiated an active fuel and fire management (continued on page 3)

Revenue Study To Look At New Facilities by Syd Brown

"In these troubled economic times . . ." begins a memo from Director Murphy, setting up a revenue generating facility site study. Translation: a study is being conducted to evaluate the possibility of such facilities as luxury resorts, restaurants, bed and breakfast inns, tennis clubs, championship golf courses, miniature golf (!), tent cabins, and bookstores in units of the State Park System. District superintendents will be asked to evaluate the possibility of a broad spectrum of new facilities at their units. While the goal is to provide a responsible framework for incorporating additional visitor-serving facilities within the State Park System, there is a disturbing aspect to this exercise.

There seems to be a directionless casting about for some method or methods to achieve a more stable economic base for the State Park System. There are better ways than forging ahead with new enterprises that are questionable, at best, and downright antithetical to the State Park System, at worst. Providing for visitors' needs is certainly one aspect of our service; however, there is a big difference between "need" and "want," as every parent knows.

(Continued on page 5)

On The Inside

President's
Message 2

Electronic
Bulletin Board 3

Letters to
Murphy 6&9

Officer
Nomination 10

Honorary
Member
Selection 10

Jack Welch,
John
Whitehead &
Bill Mott Die 11

Ballot Results 11

President's Message

The good news is that we now have a budget, and we can now get back to "normal," whatever that is. The bad news is that we still are taking a big cut, and a big cloud looms over next year's budget.

Still, when the dust settled, it appeared that Director Murphy had done an excellent job in promoting our interests. I think he deserves full credit for making the best of a terrible situation.

Director Murphy deserves a great deal of credit for engineering an arrangement of loans, fund transfers and a 10+ million dollar budget cut: one that made the Department's reorganization much less painful than it might have been. That's an important point. While many of us have justifiable fears about our personal and professional futures "post-Phoenix," they pale when compared to the prospect of a future burdened with a cut in excess of 30 million dollars.

The state budget remained deadlocked for a long, long time, and many subsequent proposals were not subject to the above arrangements. Some budget proposals cut deep enough into DPR's budget to make it impossible to operate, with or without reorganization. The situation became so complex, and so fluid, that CSPRA was unable to find any reliable information about what plan to support or oppose. Still, when the dust settled, it appeared that Director Murphy had done an excellent job in promoting our interests. I think he deserves full credit for making the best of a terrible situation.

Two issues are now apparent as important courses of action for the future. First, we need to develop a stable funding source for DPR: one that is insulated from future budget crises and that is not dependent upon bond acts. Second, we need to organize public support for parks.

As for the first goal for the future, CSPRA is hoping to work closely with DPR on various ideas that have been suggested already. Some seem promising, while others have created concern over a loss of park values and traditions. When time permits, these will be discussed more fully.

As for the second point, Mark Twain (supposedly) wrote, "Everybody talks about the weather, but nobody does anything about it." The same has always seemed to apply to "developing our constituency." I've heard it being discussed for years, yet somehow the job never quite got started. Well, now's the time. If DPR is to survive the next few years, that constituency must be mobilized — and you're just the person to do it.

I'm asking all CSPRA members to do the following:

1. Volunteer to join the Speaker's Bureau CSPRA is setting up. More about this in a few months.
2. Contact at least one community group, and ask to address them about the plight of the state park system. Stress the importance of your park to the local economy, the school system, and the ecosystem.

(Continued on page 5)

Parks And Recreation Oriented Electronic Bulletin Board Now On Line

by Paul Sanguinetti

The SANGO BBS is now on line! This is a private, free, non-profit Electronic Bulletin Board for I.B.M. or compatible computers. The BBS can be reached by calling 408/761-1345, 300-2400 baud, 8, N, 1., and is compatible with most P.C. communications software.

This BBS is intended for Park and Recreation Professionals or anyone who is interested in the Park and Recreation field. All callers are welcome. The BBS offers Conference Areas, which include, Interpretation, Resource Management, Law Enforcement, Union, CSPRA, and other topics. A growing Files Area offers files with no download limit or ratio. The Message Area allows users to leave and receive electronic messages, and communicate with other users. There is also a newsletter and bulletins section.

SYSOP (system operator) Paul Sanguinetti (SANGO) would appreciate hearing from anyone interested in this project. So call up, it's free! 408/761-1345.

Mt. Diablo (Continued from page 1)

program that has already proven its effectiveness in the recent Emmens Canyon fire. The Department recognized the fire hazard located there, and developed a two-pronged pre-suppression attack that included prescribed fire and a ridgetop fuel break. The result, as described by the California Department of Forestry and Fire Protection was an easily sup-

pressed fire, and a vindication of DPR's land management practices.

Next, he organized a media blitz that makes use of a favorite theme with the public: the rugged individual standing eye to eye against the insensitive, incompetent civil servants: the employees of the California Department of Parks and Recreation. At one point, he even declared that if he had to remove his cattle from state park lands, these bureaucrats would be forcing him to take the herd to slaughter house — as if this were a surprising action for a cattle rancher. Instead of 1,000 acres of range, he needed 7500 acres, over one-third of the park. And, he needed a lifetime lease.

When his ten-year lease with DPR ended early this summer, he attempted to not only renew the agreement, but expand it to even more of the mountain. DPR stood firm on the issue, and, while willing to renew the original concession contract, would not agree to the expansion. DPR extended the contract while negotiations continued, but finally issued an order to remove the cattle by August 15, 1992. Mr. Brumleve let it be known that he had no intention of complying, and instead increased the media campaign with the specific objective of pressuring the State Park and Recreation Commission to reopen the Mt. Diablo General Plan.

Since then, the story has become truly Machiavellan. Secret meetings were held, with undoubted pressure from the Governor's office and legislators. The Department offered Brumleve a deal that gave him virtually everything he wanted, except the key lifetime lease. Without accepting the offer, (Continued on page 4)

CSPRA

**The BBS offers
Conference
Areas, which
include, Interpre-
tation, Resource
Management, Law
Enforcement,
Union, CSPRA,
and other topics.**

Mt. Diablo

(Continued from page 3)

CSPRA members are urged to write to the State Park and Recreation Commission, arguing against reopening the Mt. Diablo General Plan and supporting current resource management practices.

In addition, please contact friends and relatives in Contra Costa County to do the same.

but with a blatant disregard of park authority, Brumleve moved his cattle into a closed area undergoing rehabilitation, moving them over park roads during the busy Labor Day weekend. He then accused Director Murphy of "bad faith" when the administration ordered him to return the cattle to where they belonged.

The situation now is this: Brumleve has accepted the proposed agreement, but still has not moved his cattle from the sensitive Mitchell Canyon area. (Editor's note: The cattle were moved on the morning of 9/20/92 just hours before the deadline issued by DPR.) In theory, the agreement cannot become valid unless approved by the State Park and Recreation Commission, and must also include a grazing and resource management plan prepared by the Department. These and other actions must occur before any changes are made in Brumleve's operation.

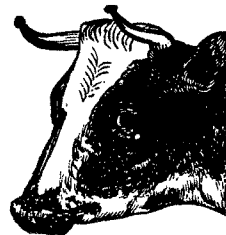
To many Department employees, cattle grazing on park lands is antithetical to the mission of the State Park System. Now, in the case of Mt. Diablo, the issue of professional integrity has been added. The Department has developed a model resource management program that provides for ecologically sound methods of fuel management and fire protection. The presence of cattle are not only unnecessary, they would actively interfere with DPR's legally mandated responsibilities.

CSPRA feels that the proposed agreement not only violates the provisions of the Mt. Diablo General Plan, but is a threat to the

ability of DPR to manage its land in the public interest. At this point, it seems that the best opportunity for stopping the agreement is at the commission level, which must decide if the General Plan allows for grazing on 7500 acres of park land. The authors of the plan are on record that their intent was clearly to limit the area to 1,000 acres, but the commission can "re-interpret" this, if they see fit.

CSPRA members are urged to write to the State Park and Recreation Commission, arguing against reopening the Mt. Diablo General Plan and supporting current resource management practices. In addition, please contact friends and relatives in Contra Costa County to do the same. The issue will likely be addressed at the next meeting of the commission in San Rafael, on October 16.

A final note: if the commission accepts the 7500 acre plan, the CSPRA Board has authorized participation in legal action against DPR, along with many other environmental and professional groups. The Board hopes that this will not be necessary, but recognizes that there may be no other recourse in this matter.



President's Message (Continued from page 2)

3. Arrange for your cooperating association (or any similar group supportive of your local parks) to meet with the Friends of California Parks. Laura Svendsgaard, the president of FCP, has done a tremendous job in beginning the mobilization of our constituency, travelling all over the state, but she needs your help. Contact her directly at: Laura Svendsgaard, P.O. Box 874, Novato, CA 94948.

Finally, DPR has been forced to agree to a proposed grazing agreement on Mt. Diablo, bending to the pressure applied by a very vocal group in Contra Costa County, who are understandably concerned about wildfires, but mistakenly feel that "hoofed locust" are the only answer. Beyond that, they are also agreeing with thinly veiled arguments that DPR employees are not competent to manage the public's land in the the public's interest. I ask that you read the article about Mt. Diablo elsewhere in this newsletter and then do the following:

1. Write to the State Park and Recreation Commission, P O Box 942896, Sacramento, CA 94296-0001, urging that the Mt. Diablo General Plan not be reopened. Stress the lack of any demonstrated need to reconsider the issue, and the need to support the Department when it takes a strong stand to protect park resources.

2. Contact everyone you know in Contra Costa county and ask that they do the same, along with a letter to the editor of their local papers.

New Facilities (continued from page 1)

The State Park System should provide opportunities for visitors to experience our parks throughout the year -- picnicking, camping, hiking, perhaps staying in a tent cabin, where appropriate, or a small cabin, such as at Mt. Tamalpais or Malakoff Diggins. There are many ways to expand off-season use, without "resorting" to resorts! Some things are better left with the private sector.

Rather than trying to be all things to all people, we should exploit our best traits: the California State Parks System has a marvelously rich historical, cultural, and natural resource land base. Busloads of school children attest to the wide interest. We could capitalize on the educational values in the State Park System, and by formalizing our work with the science, history, and environmental education curricula, we could probably develop ways to actually receive some education funding.

There is no doubt that these are troubled economic times. Now, more than ever, we should find ways to run our park system as efficiently as possible. This should be the heart of our economic soul-searching. We should expand existing facilities (where appropriate) in already-developed units. Where the General Plan allows for it, we could add another campground loop or group camping or picnic facility, for example. DPR-constructed and operated tent cabins may make sense in some places. Adaptive use of certain historic buildings may generate much-needed revenue for upkeep and maintenance, as well as provide memorable experiences for the park visitor.

Rather than trying to be all things to all people, we should exploit our best traits: the California State Parks System has a marvelously rich historical, cultural, and natural resource land base.

New Facilities (continued from page 5)

We should re-evaluate all concession agreements, to guarantee that the Department is receiving top dollar for these arrangements. In some cases, we may be better able to provide for the services, ourselves. In addition, we should make sure that we are receiving adequate compensation for leases, rights-of-ways, and special activities, such as filming of commercials, movies, etc.

"In these troubled economic times . . ." This may seem to be a compelling argument, but reacting to these "troubled economic times" misses the point. We were never supposed to be money-makers. We are not here to generate dollars for the over-strained coffers of the State of California. What happens when the times become less "troubled"? These justifications and rationalizations will set precedents that will endure long beyond the present. To consider proposals that clearly run counter to our underlying mission is to consider our own demise.

Let us never forget that the purpose of the California SPS is not to be economically self-sufficient. We serve a basic human "need," recognized by early visionaries, such as Frederick Law Olmsted, Ralph Sidney Smith, Andrew P. Hill, and Newton B. Drury. It is important to provide and preserve that special niche that sets the California State Park System apart from other park systems. While others may rely on commercial-type developments, they don't have what we do — a priceless and matchless (at least so far) resource-based system of historic, scenic, and natural parks. When we "join them," we may "become them." Is that what we want?

Let us never forget that the purpose of the California SPS is not to be economically self-sufficient.

If this latest revenue generating scheme interests you or turns you off please send us your comments!

There will be updates in the months to come.

Open Letter to Director Murphy

As a CSPRA member of over ten years, and park employee since 1977, I would like to submit this letter, that I recently sent to the Director's Office, for publication and consumption by the general CSPRA membership.

It is becoming more and more obvious that not all of us (SPPO's) do the same job, and the reorganization process is also obviously going to hurt some of us more than others. However, I've noticed that CSPRA hasn't shrunk from publishing controversial opinions in the past, as long as they are not inflammatory or a personal attack on any individual or group of persons. Even though my letter addresses specific issues that may make some CSPRA members react defensively, I feel that it is overall constructive and truthful in requesting continued support for those of us (SPPO's) who are up to our eyeballs in enforcement problems and still trying to cover the other bases.

Sincerely,
Jim Fitzpatrick, SPR II

California Parks Service
Director's Office
P. O. Box 942896
Sacramento, CA 94296-0001

Dear Director Murphy,

On June 27, 1992 SPR I Lisa Mulz and I placed a man under arrest for driving under the influence. The man resisted arrest, and Mulz and I were swarmed upon by a crowd of our arrestee's family members and associates. Eventually we were able to handcuff the man, put him in my patrol car, and jump the curb in reverse. This was necessary due to the crowd of up to one hundred people and several vehicles blocking Mulz and me in. Fortunately, as soon as I left with the suspect the crowd of onlookers calmed down (Continued on page 7)

Letter to Murphy (Continued from page 6)

and remaining back-up officers were not assaulted.

Later that same night we received news that two Orange Coast lifeguards had been assaulted and beaten. One of them, a former co-worker, was airlifted to a hospital unconscious. A few days later I called my friend and was greatly relieved to learn that both the other officer and he were hopeful of a full recovery and be returning to their peace officer duties. Apparently they had responded to a fight at Bolsa Chica beach and had been overpowered by a group of gang associates. One officer's pistol was taken from him, eleven suspects were arrested, and several handguns, other than the lifeguard's stolen weapon, were seized. This incident was even reported in out of county newspapers from where it had occurred.

Also, attached to this letter is a DPR 157 in which rangers Ramos and Lehmann describe confiscating a dagger and a loaded .9mm pistol from local gang members. Although not a common arrest within the park, this type of arrest is not the least bit surprising or incredible for the district in which it occurred. Thankfully, June 27th and July 11th cannot be considered a routine or typical day in the lives of the State Park Peace Officers mentioned. Yet both days' events were certainly real and factual, and we may unfortunately see more of them.

I would now like to get to the heart of this matter, and directly relate these three incidents to the Phoenix Committee's proposals and the "new direction" the DPR may be taking.

I personally took advantage of the opportunity to meet with Phoenix Committee members when they visited Los Lagos District and provide my input. I was encouraged by both members' active listening and interest. I was told that my concerns were common to many other employees, and the gist of much of what we discussed is addressed in the Phoenix Committee's final recommendations regarding the Office of Field Services. To quote, this report states, "Too much time/expense is placed in peace officer training. Too much time/expense is placed in peace officer training for some lifeguards. Ranger (generalist) classification is used in places where other (specialist) classes may be more appropriate. This results in an apparent overemphasis on law enforcement . . . There are questions regarding the need for all superintendents to be designated as peace officers."

On the page regarding principles by which authority will be delegated, the Phoenix Committee report also stated in items #2 and #3 that "People are continuously provided relevant and candid information about the department" and "Training is provided to all willing to learn."

To be candid, what the Phoenix Committee's recommendations regarding the Office of Field Services are referring to are issues that are common knowledge to State Park Peace Officers; issues that all too often are a source of division, discontent, discouragement and frustration. It is common knowledge that the DPR has many peace officers on its payroll that are permanently assigned to museums, offices and work units where their involvement in law

(Continued on page 8)

Letter to Murphy (Continued from page 7)

enforcement is nil to minimal.

Statewide, they all receive the same safety retirement and peace officer benefits as those officers who are primarily involved in public protection and law enforcement. We all know that, as peace officers, they are provided the required equipment and training, and that when one considers the actual amount of peace officer related work that is performed by them any reasonable person would question if the expenses related to these personnel was wasteful. These may be unpleasant but rather obvious facts.

Now, on the wings of a major fiscal shortfall, the proverbial chickens have come home to roost. Obviously we must reconsider our old way of doing things or perish. Naturally this includes reexamining peace officer staffing, training, job assignments, and perhaps promotions in order to see if we can be more effective.

My plea to you, sir, is this - don't throw out the baby with the bathwater! While most of us in DPR may be naturally wondering, and worrying, about our future and security with the Department, there are many of us who are additionally truly struggling to keep our parks safe and enjoyable and carry out our peace officer duties.

Sir, I'm sure that I can't fully appreciate or know the magnitude of the decisions and problems that face you without having been in your shoes. But the issue of crime in our society, and consequently our parks, seems to be worsening rather than improving. I speak

only for myself in this letter, yet I feel convinced that many of my fellow DPR peace officers might identify with me when I state that we truly need your continued support for appropriate peace officer staffing, equipment, and training.

Sincerely yours,

James O. Fitzpatrick
State Park Ranger II
Los Lagos District

An Open Letter To Director Murphy: The Cattle Grazing Issue At Mt. Diablo State Park

"We must preserve the integrity of natural and cultural systems through every means necessary."

--Don Murphy, then-CSPRA President
March 1988 CSPRA Newsletter

"Courage, patience, singleness of purpose, and a love for the State Park System are all attributes which each of us must possess to be successful at fulfilling our mission. I am speaking of courage in the face of political pressure to abandon our mission, patience with a governmental system which is at times self-derogating, and singleness of purpose when we are tempted to compromise for what appears to be a benefit when it is actually a distraction away from the mission.

We must not sell, compromise, barter, trade, or callously throw away what have been designated as irreplaceable portions of California's natural and historic heritage. We must resist the temptation to yield to political expedience. We are not politicians,
(Continued on page 9)

"Courage, patience, singleness of purpose, and a love for the State Park System are all attributes which each of us must possess to be successful at fulfilling our mission."

We must not sell, compromise, barter, trade, or callously throw away what have been designated as irreplaceable portions of California's natural and historic heritage.

Open Letter — Grazing (Continued from page 8)

we are stewards of a priceless treasure. There will always be elements in our society that will not recognize park lands as sacred. But there should not be an ambiguity in the word 'protect.' There are plenty of politicians and special interest groups who are willing to work hard to misuse and abuse the State Park System. Our mission, if you have the guts for it, is to prevent them from doing so."

--Don Murphy, then-CSPRA President
April-May 1989 CSPRA Newsletter

"I'm proud of you, DPR:
For the excellent job done on the Mt. Diablo General Plan and the Fire Management Plan."

--Don Murphy, out-going CSPRA President
March-April 1990 CSPRA Newsletter

"The park family is no different from any family. We do some things right, and some things we struggle with. On balance, I believe we are a healthy family which at times suffers a lack of good old-fashioned parental guidance. Put another way, we at times lack leadership. When this becomes true, then it is incumbent upon each of us to attend to the health of the family by exerting the leadership qualities inherent within each of us. Remember, when each of us cares more about the other than we do about ourselves, then we are all winners."

--Don Murphy, out-going CSPRA President
March-April 1990 CSPRA Newsletter

"...To protect the natural and cultural resources of the State Park System, unimpaired for present and future generations . . ."

--Director Don Murphy's DPR Mission Statement
1992

I was contemplating on how to respond to your recent agreement in principle to continue to allow cattle grazing on Mt. Diablo State Park. My first draft response was admittedly harsh, but I've opted for a different, simple, and emotional approach. I hope it's an effective approach. I wanted to share some quotes from my CSPRA library of a committed park manager and CSPRA activist, one who displayed a great love for the State Park System — a person many of us had high hopes for when he became DPR Director.

Please Mr. Murphy, stick with your convictions. Uphold the Mission Statement of the State Park System. Do the right thing. **Do not allow cows to graze Mt. Diablo State Park.**

Sincerely,

Carl A. Nielson
State Park Ranger I
Mt. Diablo State Park

CSPRA

"I'm proud of you, DPR:
For the excellent job done on the Mt. Diablo General Plan and the Fire Management Plan."

--Don Murphy, out-going CSPRA President
March-April 1990 CSPRA Newsletter

CSPRA Honorary Ranger Nominations Opened

Do you know of a person who has demonstrated distinguished service devoted to CSPRA's objectives? If you do, you may nominate that person as Honorary Member. Simply compose a letter giving the person's background and relate one or more specific accomplishments which you believe qualifies him or her for an Honorary Membership in CSPRA.

Your nomination should meet four general requirements as follows:

I. The individual shall have contributed in an outstanding or extraordinary manner, or to an unusual degree, to the objectives of the Association.

II. This service or action is to be beyond that which the individual would normally have accomplished as part of his or her job or responsibility.

III. The service may not necessarily be of state or national importance, but is to be judged on its own merit and degree of contribution.

IV. Normally, the recommendation would be made during the person's lifetime.

Your nominee, if approved by a two-thirds vote of the Board, will be honored at the 1993 GEC in Santa Clara. Please send nominations by December 10, 1992 to:

1993 Honorary Member
Committee
c/o Mary Wright, Chair
P O Box 942896
Sacramento, CA 94296-0001

Nominations Are Due by 10/22/92

Nominations committee chair Ron Schafer will hold the 1992 nominations meeting on October 22 at 7:00 pm at the Chino Hills District office, 1879 Jackson Street, Riverside, CA 95223. Phone (209) 795-2334.

Nominations are due for Secretary/Treasurer and two Directors. Those elected will take office 1/1/93 and serve through 12/31/94.

The secretary/treasurer is responsible for overseeing these functions which are mostly performed by the office manager and has the responsibilities of all other board members.

Directors shall attend approximately four meetings per year and make decisions and carry out such tasks as are needed to assure the proper operation of the association.

Please send your recommendations of persons to be nominated to Ron Schafer at the address above. This includes those who want to have themselves nominated.

The committee will nominate two persons or more to each position. Other persons can be nominated by sending their name, a statement of their willingness to run along with the signature of five (5) voting members to CSPRA, P O Box 292010, Sacramento, CA 95829 by November 10.

Send Honorary
Member nomina-
tions to Mary
Wright by 12/10/
92.

Send officer nom-
inations to Ron
Schafer by
10/22/92.

CSPRA Friends and Members Die

Jack Welch

Jack Welch died, August 3, at age 72, from emphysema after almost two years of severe illness. He was the 5th president of CSPRA having served in 1972 through 1974. He retired in 1981 as State Park Manager III from San Diego Coast Beaches. He spent his entire career in southern California. His many friends will certainly miss him. He was 72.

John Whitehead

John was a friend of CSPRA and DPR who served on the Park and Recreation Commission until recently. He died on September 6.

William Penn Mott

Bill Mott was Director of California State Parks during the Reagan governorship and Director of the National Park Service during the last half of the Reagan presidency. After leaving the State Park System he founded the California State Park Foundation. Mr. Mott worked tirelessly throughout a long career of park work that saw him head up city, regional, state and national park systems. He died Monday night, September 20, of heart failure following a monthlong battle with pneumonia. He was 82.

Ballot Results

1. Amend constitution to allow former DPR employees to maintain their membership. Yes 70, No 25. (74%)
2. Retired dues increase to \$18. Yes 79, No 22. (78%)
3. Change Treasurer to Secretary Treasurer. Yes 88, No 9. (91%)

Ranger's Relief

CSPRA

It's here the people come to play in parks by stream or ocean bay.

Gripes on cites stating they won't pay the grounds are full but "Can't I stay?",

Kids get hurt, they cry and stray hornets sting but what the hey,

I work here, past night skies gray and see it all in every way,

But the very, very best I'd say is the workday following Labor Day.

Bill Krumbein — 8/22/92

Letters From Retired CSPRA Members

This is a call from the wild. Having received your dun for dues (CSPRA, of course), we collectively, as individuals, here-by respond.

The other two can tell their own tale, but Marie and I are enjoying Alaska. We actually left the Lower 48 on June 1, as we entered B.C. Canada. We entered Alaska by way of the Alaska Marine Highway System, from Prince Rupert on June 13, through the inside passage. We have had wheels on the ground (sometimes in the air), since Haines, Alaska on June 26th. Dues are enclosed, cash quick, we may be broke by time we return.

Regards, Kirk Wallace

Traveling with the Wallaces and Neals on a trip of a lifetime. We left home May 5th and will be back mid-September if we hurry. Will travel about 15,000 miles total.

Wishing you well.
Wes & Celeste Cater
(Continued on page 12)

Retired Letters

(Continued from page 11)

Still plowing snow for Cal-Trans in Winter — Cowboying in Spring and Fall, but I have to fish all summer!

Regards, Michael O'Rourke

At the end of seven months retirement we are just about finished with our new home and grounds work here in Coarsegold.

We have interrupted our work to travel in our Motor Home to Oklahoma, Arizona, Texas, and stops in between. We flew to Virginia in March and spent a month with our daughter and touring Washington, D.C., Virginia and North Carolina. Also have been to the Coast several times. We are leaving the middle of August for a three month trip to Northeastern States and back through Southern States.

We are really enjoying retirement.

Ray Jenkins

It is good hearing from you again. I am about the same and doing the same things. Cleopal my sister her Grandson, took his Master's Degree at U.C.L.A. and he graduated this year. We attended his graduation. They had a nice program. I hope to make a trip to the Mid-west again this year and visit with relatives and friends.

I am glad I am not working for D.P.R. They are having some problems.

Sincerely yours,

Guy Huston

I agree with you, am glad I'm retired. Sometimes I wonder if today's Rangers have the same feeling towards the Parks as we had in the past. Expect that some do and hope so. Some of the things I see though do make me wonder.

My retirement remains busy this year. I've made a trip to Florida to attend a convention, to Minn. for the NCAA final four games, to Northern California and a trip to Ogden, Utah. Otherwise, has been quiet.

Regards to all -- Louie Wakefield

How right you are. It's a dirty shame what's happening to DPR and our people. Glad I'm not in the mess. Glad we were there in the good productive time.

We also are enjoying life and having fun. In the last year we have traveled to Hawaii, Kauai, and will go back in March and do the big island. Also toured New Mexico, Oklahoma, Texas, Utah, Oregon, Colorado, and Nevada. Lots of beautiful country out there.

Also are seeing lots of our own country right here in Arizona. Hope any our retired folks will drop by and see us if in our area.

Wish we had a CSPRA Newsletter to keep all in contact.

Best regards, Morrie and Jan Oller

A short note! It has been some time since I retired from Four Rivers Area State Parks, 1977 to be exact.

I had fun playing urban cowboy
(Continued on page 13)

Retired Letters

(Continued from page 12)

on my 22 acres until 1988. Had Simmental cattle. A large breed from Switzerland and Germany. They were gentle creatures, but it got to be a hassle pulling calves on cold winter nights., playing veterinarian, trimming hooves in 100 degree plus heat, re-vegetating pasture . . . I miss their beauty standing out in the pasture. There is a contentment that comes with being around cattle.

Helen and I belong to a travel group, Yosemite Sam's, from Merced. A few members are retired Air Force, like I am. We don't travel far, but enjoy the fellowship and support the group gives to one another. There are lots of tall tales recounted around the picnic table.

I don't see many of my people from the old days, except Clyde Stickle and Jake Jaquier. My wife corresponds with Bill and Sylvia Marshall at Paradise.

Alton Baker

We have sold our first house, which we built here at Lake Almanor, in order to build again on a lakefront lot. We are doing a little landscaping and doing the final touches on the house this summer.

After 16 Sierra winters, we took our trailer to the lowlands of the Napa and Rogue River Valleys this past winter and really enjoyed the change.

Best Regards,

Jim Stewart

I'm still free-lance writing — hit the L.A. Times with story on Anza Borrego! — and serving as Executive Director (volunteer) for League of California State Park Non-Profits. And helping out with SAVE BODIE! And birdwatching.

Bill Dillinger

Elouise and I have been on vacation with our 5th wheel trailer. Went 10,000 miles around the good old USA. Had great fun. Hope to keep on truckin'!

Jack Stowe

I'm 6 days into my second year of retirement and enjoying it "to the MAX".

As you know we have moved to Camino (near Pollack Pines). We love the mountains. Of course, we haven't been through a winter yet!!

We get back to Monterey occasionally to see old friends and play golf. We have a short trip coming up to Humboldt, but nothing very exciting. Our move is about all we can handle this year.

Hope to see you in Santa Clara.

Ron McCall

We took delivery of a new 33' Pace Arrow motor-home in December. Have taken it to Oregon a couple times, and through Idaho, Utah and Nevada. Next week we head back to Salt Lake City to do some more genealogy sleuthing, then hopefully to Washington State. About September 1st we will be heading for New England and the fall colors.

(Continued on page 14)

Retired Letters

(Continued from page 13)

We'll be gone at least two months. Then the end of December we have booked with a motorhome group for the Rose Parade, with camping at Pasadena City College right on Colorado Boulevard.

Last summer we took our oldest grandchild to Molokai with us. This next year it will be the next one's turn — don't know yet where we'll take her.

You no doubt heard of Dick's most recent accident last August. Briefly, his Achilles tendon snapped and he dropped to the ground and multi-fractured his right elbow. Both had to be operated on, and he spent a month in the hospital, followed by intense physical therapy. Then in December, they had to operate on the arm again to remove the stainless steel, as the screws had started to back out. He is doing fine now, although complete flexibility of his arm will never return, and he has tightness in his leg. But the orthopedic surgeons did a marvelous job. Just last month he was diagnosed with asthma, so the saga continues!!!

Sincerely, Dick & Annabel Menefee

All's well, been doing consulting this spring, taught and took a trip to Alaska (Nome, Juneau). I guess Interpretive Services is no more . . . makes me feel sad and sorry for Parks.

Norman Wilson

In late March we attended my 50th Venice High School reunion - class of S '42. The main events

were held at the Hacienda Hotel near LAX airport. Also, while down south we visited the Queen Mary and Hughes' "Spruce Goose" in Long Beach. The Spruce Goose exhibits, etc. were personally more meaningful to use since Barbara's father's (Stanley A. Bell) picture is included in photos in three exhibits and one short film. He was Hughes' chief aeronautical engineer for over 10 years and his ground engineer on his 'round-the-world flight in 1938. Also, I worked at Hughes Aircraft Co. in the original old location in Culver City for 3 months in 1942 and my dad worked there from November 1941 to the fall of 1944. Those were exciting times.

Take care — Bud Heacox

Enclosed please find my check in amount of \$9.00 for the ensuing year's membership dues.

It certainly appears that things are surely not going well with DPR. I am glad that I don't have to contend with shortages and budget problems, except my own.

We don't get to travel any more due to my emphysema problem. Wish we could.

Sincerely, Walter Martell

I'm still shoveling poop full time at the San Francisco Zoo, mostly taking care of the lions, tigers, leopards, and bears, but I'm also all over the Zoo and could be with the elephants one day, the rhinos or gorillas the next. I'm glad I'm not going through the death throes Parks seem to be experiencing now, though the Zoo has similar problems as does the City - and

(Continued on page 15)

Retired Letters

(Continued from page 12)

the whole country. But, as long as the Zoo animals poop, I've got a job. They don't poop, I don't eat!

Best to you, Alex Weiss

Gordon is in Montgomery Convalescent Hospital, has been since mid February. I could not physically cope with it at home any longer. He is alert, reads the newspaper, watches some T.V., runs his tapes, and seems to accept the situation, fortunately for me. Know he would rather be home. They bring him out and put him in the car and I take him for a ride and sometimes get something to eat in the car once or twice a week. It's been a long time for us all (10 1/2 years).

He still enjoys getting the park papers and news.

Thank you. Thelma Kishbaugh

What is happening in my house. I am doing fiftieths. Fifty years ago I: graduated from high school, started my Park Ranger career (with the National Park Service) and saw the formation of my World War II unit.

Where I am going? In May, to Kansas City to meet with the seven remaining members of my World War II Army unit. To Hawaii, as often as possible for relaxation and househunting.

What am I doing? Writing a book, the history of World War II Army unit. In my spare time, keeping the house in showable condition. It is on the market as a first step to moving to Hawaii.

Joined the Department in 1954 at Tomales Bay. My daughter, who was three at the time and grew up living in Parks, said recently, "Dad, we had the 'Golden Years'." She is right.

Regards, Jim G. Davis

The big thing here in Woodburn (OR) is golf and I do play a lot of that. We have a beautiful 18-hole course here at the Woodburn Senior Estates Retirement Area and have no trouble getting on the course when we desire to do so.

We were in Thousand Oaks, CA in January of this year and was in touch with Kirk and Marie Wallace, in Oxnard. I have received word from Kirk that they have moved to Twain Harte, CA.

So you can see what happens when you get old! Slow down and take it easy! The best to you and yours.

H. W. (Mike) Hanna

"HUMOR IN UNICORN" COLUMN #92-3

But, don't touch your tongue to the frozen pump handle. "With the changes in the Rodney King trial, you have to peel your eyes to the TV or you miss something."

Some temptation. "That's like holding a piece of bait in front of a horse."

Suzie ChapStik, where is your explosive talent when we need it? "With these Santa Ana winds you just blow up and dry away."

Term of endearment or what? "Easter or Spring Break or whatever you deem it."

So, just can't seem to get a handle on the problem, huh? "Was he mad? He really flew off the roof!"

**The California State Park
Rangers Association
A professional association.**

Office Manager - Newsletter Editor

Doug Bryce
P.O. Box 292010
Sacramento, CA 95829-2010
(916) 383-2530
FAX (916) 387-1179

President

Wayne Harrison
Associate State Park Resource Ecologist
Calaveras Big Trees
(209) 795-2334

Vice President

Tyler Conrad
Ranger I
Tule Elk Reserve
(805) 765-5004

Treasurer

Kate Foley
Lake Oroville, Chief Ranger
(916) 538-2208

Calendar

Board Meeting
10:00 am Modesto
11/1/92

Deadline for nomi-
nations — see
page 10. 10/22/92

Honorary Member-
ship nominations
due — see page
10. 12/10/92

Ballots for the
1992 election must
be returned by
12/10/92

1993 Workshop
Santa Clara
3/4-7/93

Directors

Ron Schafer
Chino Hills District Superintendent
(714) 780-6222

John Knott
State Park Superintendent
Legislative Office
(916) 653-9909

Kathryn Yee
State Park Ranger I
San Francisco District
(415) 557-4069

Save Bodie! and all other
committees use CSPRA address.

**For additional information on the
association, write the
Office Manager.**

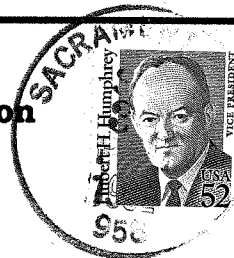
The NEWSLETTER (ISSN 0887-9176) is pub-
lished by CSPRA, P.O. Box 292010, Sacra-
mento, CA 95829. The NEWSLETTER'S Editor
is Doug Bryce; contributing editors and
authors are as noted. Articles are welcome,
1000 words or less. All submissions become
the property of CSPRA and may be edited with-
out notice. **The deadline for articles is the
15th of the month prior to publication.**

Aug/Sept



1992

**California State Park Rangers Association
P. O. Box 292010
Sacramento, CA 95829-2010**



Mail to:

MUETZ-HISTORIAN, MICHAEL
2781 STONECREST COURT
PLACERVILLE CA 95667-4965

NO



Recycled & Recyclable