

NEWSLETTER

california state park rangers association

Volume VI Number 39

June 1992



Save Bodie! Update: CSPRA Testifies In Congress!

by Donna Pozzi

On May 21, the House Subcommittee on Mining and Natural Resources conducted a hearing on HR 4370, the Bodie Protection Act of 1992. I was privileged to testify on CSPRA's behalf, in support of this legislation. As hearings go, it wasn't a particularly big deal. The whole thing was over in less than two hours. But for someone who had never before been to Washington, DC, it was pretty intense.

Washington is a beautiful, exciting city. I travelled there alone (on my

birthday, no less!), arriving ahead of time so that I could meet with various congressional staff members to discuss the bill. I stayed in a very, very inexpensive (\$45/night!) guest house on Capitol Hill that was a five minute walk from the Capitol. Also within a few blocks was the Sierra Club's office; they graciously let me use their phones and fax machine. The weather was quite warm and it seemed that I had taken all the wrong clothes. The legislative office buildings are huge and confusing; (Continued on page 3)

On The Inside

President's
message 2

Do The Write
Thing For Bo-
die! 4

SRL Purchases
Land at Ave of
the Giants 4

Letters 5

L A Times Edi-
torial on Bodie
6

Questionnaire
on '93 Work-
shop 6 & 7

President's Message

When Nina Gordon called me on a Thursday evening about six weeks ago to talk, I figured it was going to be the usual talk about CSPRA issues. WE actually did talk about CSPRA, and about issues, but her preface to our conversation changed the whole perspective. Nina was faced with the same painful truth so many DPR employees have been confronting: her position didn't fit in the new "org charts." Just as so many of our colleagues are doing, she was joining the ranks of former DPR employees, and now I am your new president.

Needless to say, these are stormy times for state parks, and I intended to serve a term on the CSPRA Board as a director so that I could "get involved." I'd waded in way past my ankles and probably past my knees, but as a member I wouldn't have to take the plunge: only the president had to do that. I'd even volunteer to be the vice president. After all, as my wife told me, "if Dan Quayle can do it . . ."

Nina's departure from the Department is a loss to us all, but it also demonstrates the special relationship DPR has with its employees. As a simplistic and jingoistic as it may sound, working for parks is a way of life for many of us, and few can give it up entirely. Nina was doing a wonderful job during her two month term, and she gave CSPRA a tremendous amount of time and energy. She has done the same for me by making this transition move smoothly and efficiently. And she will, I hope, continue to do so. Nina's dedication to the state park system, to CSPRA, and to us is as strong as ever, and at my request she is staying involved by working on various special projects.

The next months will be difficult times. There are obvious issues to be faced: the "brain drain" as people leave the department, forced demotions and transfers, a shattering of organizational memory that borders on Alzheimer's, and the still lurking prospect of layoffs and park closures. Yet there remain the old issues that must not be forgotten: Bodie, redwood park 'give-a-ways," grazing leases, commercialization, revenue generation. These are all important matters on which CSPRA must continue to be strong and active, which brings us to one big problem. You, as CSPRA members, have a right to expect all of your officers to dive into them head first, if necessary — but don't expect us to make much of a difference if you aren't at least wading in behind us.

Over the next few months we will be offering you many opportunities to get involved, and they really will be offers you can't refuse. For now though, please help us with Bodie. Look for the articles on Bodie in this issue (pages 1 & 4), read them and write letters. We've come too far, and the issue is too important, to lose momentum now.

CSPRA Testifies in Congress (Continued from Page 1)

I walked and walked and talked and talked.

Only two members of the six-member subcommittee attended the hearing; the Energy Bill and Ancient Forest legislation were going on at the same time, competing for everyone's attention. The author of HR 4370 is Rick Lehman, who represents Bodie now. After re-districting goes into effect in January, Bodie will be in the district now represented by John Doolittle. Doolittle is opposing HR 4370. Both Lehman and Doolittle are on the Interior and Insular Affairs Committee. Both participated in the hearing. Doolittle read a brief statement and left; Lehman sat with the subcommittee and participated in questioning the witnesses.

Other than Congressman Doolittle, there were three witnesses who testified against HR 4370. The Administration was represented by the Bureau of Land Management. It's unfortunate that the National Park Service couldn't testify in support of the National Historic Landmark and all the excellent work NPS staff have done documenting Bodie's cultural values. The Chairman of the Mono County Board of Supervisors also gave testimony. So did the vice president of Galactic Resources. All said pretty much the same thing: HR 4370 isn't necessary. They feel they can protect Bodie with existing laws. The chairman, Congressman Nick Rahall, did a great job of asking probing questions, revealing information from news stories and other reports that seemed to contradict the testimony. Mr. Rahall is from West Virginia, where his experience with coal mining has made him a leader for mining law reform.

Two of us spoke in support of HR 4370. Another Supervisor from Mono County, Andrea Lawrence, represented the Eastern Sierra Citizens for the Protection of Bodie. She brought copies of the more than 700 letters that the Board has received from people all over the world, asking the supervisors to save Bodie from mining. And I testified for CSPRA. (If you would like a copy of the testimony I presented on your behalf, please let me know.) Our credibility is good. Congressman Lehman commented that our testimony should be weighed most heavily due to our professional perspective. Sadly, there was nobody to testify for the State of California. The Wilson

administration has yet to take a position on HR 4370.

CSPRA's accomplishments for Bodie are remarkable. We've made amazing progress and have had incredible successes. I think we're winning. But it's not over yet. Your active support is needed now. Please see the article elsewhere in this Newsletter for details on how you can help.

CSPRA Membership

The California State Park Rangers Association (CSPRA) has been dedicated to protecting and preserving features of the California State Park System for almost three decades.

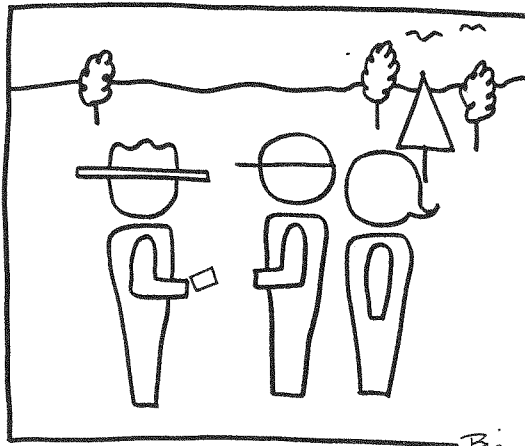
Membership is open to all current and retired employees of the California Department of Parks and Recreation.

CSPRA was organized in 1964 by California park professionals as a non-profit, tax-exempt, professional society to encourage quality interpretation, resource management, public protection, maintenance and management of the State Park System.

CSPRA actively promotes advancement of the ideals and philosophy for which state parks were originally founded.

For membership information write:
CSPRA, P O Box 292010, Sacramento,
CA 95829-2010. (916) 383-2530

RANGER LOGO



"...AND AS A COUPLE AGED
62 OR OLDER, YOU QUALIFY
FOR OUR GOLDEN PAIR PASS."

See
additional
SAVE BODIE!
article on
page 4.

Do The Write Thing For Bodie!

We need your help now! Your congressman's vote is critical to the passage of the Bodie Protection Act of 1992, authored by Richard Lehman and George Miller. This Bill, HR4370, was voted out of the House Committee on Interior and Insular Affairs on June 17. Now it goes to the House floor.

Support of the entire California congressional delegation is essential; urge your representatives to actively work for the passage of HR4370. (If your congressional district is changing in January, write to your current and future representatives.) **If all CSPRA members get involved by writing or calling their representatives today, we can really help ensure that this bill will pass.** If you've written before, did you get a favorable response? It's time to follow up — send them a reminder!

We need broad, bi-partisan support to guarantee passage of HR4370 in both houses and President's Bush's signature before the session ends. You can help by asking your friends and relatives from all over the country to write, also. This is a national issue. Remember, the bill would protect public (federal) lands in the Bodie Bowl from mineral activity, subject to existing rights. This is an important step in our long fight to save Bodie as a ghost town, for future generations to enjoy.

Write to your congressman:
The Honorable _____
U.S. House of Representatives
Washington, DC 20515

We also need support in the U.S. Senate:
The Honorable _____
U.S. Senate
Washington, DC 20510

If you have questions about HR 4370 or don't know what to say in your letter, please call Donna Pozzi at (916) 443-3359. If you speak with staff in your congressman's office and need answers to their questions, Donna will be happy to help you.

**It's absolutely vital that
you call or write
TODAY!**

Save-the-Redwoods League Purchases More Redwood Lands To Protect Avenue Of The Giants

THE Save-the-Redwoods League has purchased a 37-acre parcel on the west boundary of the Charles B. Alexander Memorial Grove for addition to Humboldt Redwoods State Park. The Alexander Grove, which was established in 1932, and the Franklin K. Grove are located along the Avenue of the Giants and the South Fork of the Eel River in Humboldt Redwoods, the largest Redwood State Park.

The new property was for many years a resort known as the Forest of Arden, consisting of a lodge and gift shop, but none of the former buildings remain. The property includes a small grove of Redwoods, and will also provide a buffer along the edge of the old-growth trees of the Alexander Grove and the private lands outside the Park.

The Save-the-Redwoods League is a non-profit national conservation organization which acquires Coast Redwood and Giant Sequoia forest land for protection in the California Redwood State Parks, in Redwood National Park, and in other public parks and preserves. Since 1918, the League's 100,000 members have donated more than \$70 million toward the purchase and protection of more than a quarter of a million acres of Redwood forest so that these great forests may be preserved for public enjoyment forever.

"Humor In Unicorn"

by Jeff Price

Well, I know you have been wondering what happened to the mildly amusing Mixed Metaphors and Malaprops column in the CSPRA Newsletter. After a brief hiatus, it is back. These are slightly fractured utterances which make one stop and think.

So, I guess the theory of entropy is involved here, along with eons of effort, when he said, "...that has been the case from time immaterial."
(Continued on page7)

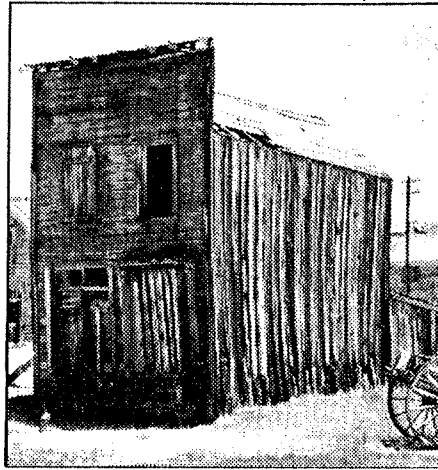
Saving Ghost Town From an Old Friend

Bill would protect historic Bodie from renewal of mining, the industry that gave it life

Between 1859 and the 1940s, the town of Bodie, near Mono Lake, was a center of gold and silver mining in California. In its heyday, in the late 1870s, about 10,000 people lived in its 600 or so buildings.

When Bodie was abandoned, after World War II began, it became the largest, best-preserved ghost town in the western United States. To this day, buildings remain as they were when residents left, with dishes and eating utensils still on some tables. Bodie is now a California Historic Park, a National Historic Landmark and a tourist attraction that draws 200,000 a year.

State parks personnel have maintained Bodie in a state of arrested decay. Their aim has been to keep the 120 surviving structures as they were when the site became a state Historic Park in 1962. The destructive effects of rain, wind and snow have always



been their biggest enemy. Now, ironically, the town is threatened by mining, the very activity that gave it life.

Bodie lies on public land that still contains valuable gold and silver

veins. Title to some of these resources is privately held, even though the metals are under public lands. Mining could require a 200-acre open pit and take 12 to 20 years. It would also require milling and processing facilities, roads and tailing dumps and would leave cyanide waste. All this could mean the ruin of Bodie.

A pending federal bill would bar new mineral claims on 6,000 acres of public land around Bodie and permit mining on existing claims only if it caused no adverse effect on the site's historic and natural resources. Sponsored by Rep. Richard H. Lehman (D-Sanger), the bill passed the mining and natural resources subcommittee of the House last week. Lehman's bill would implement a resolution passed by the California Legislature last year asking Congress to protect a unique site. It deserves support.

CSPRA/PRAC Workshop Survey

The Operations Track Committee would like to hear from you!

We need to know what subject you would like to have covered at the March 1993 workshop in Santa Clara. Operations is a broad area, we can touch on anything that isn't resource management or interpretation (they have their own tracks). We've listed some of our ideas below, if they interest you let us know. If you have other ideas or know of a speaker who would be just perfect for the conference then give us a call. Send your ideas, recommendations or comments to:

Pam Helmke
1375 Branham Lane
San Jose, CA 95118
(408) 277-5130

☐ Search & rescue
☐ Law enforcement
☐ Domestic animal control

☐ Resume & interview skills
☐ Incident Command System
☐ "Verbal Judo" type skills

☐ Grant writing/sources
☐ Lyme disease update

Your ideas please! _____

Interest Survey For The Resource Management Track "Inventory and Monitoring" 1993 CSPRA/PRAC Workshop in Santa Clara

We need to hear your particular interests and concerns so that the program better serves the needs of members. Please take some time and answer the following questions:

1. Which of the following subjects require monitoring at your park?

(Priority: 1 = high, 2 = Medium, 3 = low, 4 = unimportant)

☐ Impacts of park development
☐ Off/onsite mitigation projects
☐ Sensitive species
☐ Prescribed fire
☐ Wildlife populations
☐ Other

☐ Impacts of outside development
☐ Restoration success
☐ Long-term Change
☐ Special habitats/communities
☐ Biodiversity

2. What are the barriers to accomplishing monitoring at your park?

(Barrier: 1 = not a barrier, 2 = hinders, 3 = obstacle, 4 = prevents)

☐ Funding
☐ Equipment
☐ Other duties

☐ Technical assistance
☐ Facilities
☐ Other

Explain:

3. What kind of monitoring/inventory are you currently doing? How much of your time is spent in this function?

4. Which of the following topics might you find useful?

☐ Sessions on field techniques
☐ Aerial photo-interpretation
☐ Statewide Databases (WHR, Rarefind, others)

☐ Statistical analysis
☐ Photo monitoring
☐ Other

5. Which of the following natural processes or biological elements would you likely be monitoring?

☐ Riparian vegetation
☐ Forests
☐ Shrublands
☐ Birds
☐ Insects
☐ Fuels
☐ Stream Dynamics
☐ Past disturbance
☐ Other

☐ Aquatic habitats
☐ Grasslands
☐ Mammals
☐ Reptiles and Amphibians
☐ Fish
☐ Air quality
☐ Microclimate
☐ Erosion/sedimentation

6. Please note any specific requests for topics or issues for presentation.

Please send your response before July 3, 1992 to: Gary Waldron, 8400 Hautly Lane, Valley Springs, CA 95252 or call wk (209) 333-6929 or hm (209) 786-3056.

Your participation is appreciated!

Humor in Unicorn (Continued from page 4)

Photosynthetic reaction to space and time?
"You have to keep in light where you are."

Certainly not tax deductible. "What do you contribute that error to?"

Are you sure you haven't been watching too much TV? "I have a conspiracy about the reason, but I'd rather not say at this time."

Nature abhors a vacuum. "Some of his good traits were bound to wear off on me eventually."

If you happen to catch an interesting turn (or mis-turn) of a phrase, send it along to me care of CSPRA Newsletter.

Until next time, let me leave you with this idea about being a team player..."He's a fly in their offense."

Letters

Dear CSPRA:

Please cancel my membership to your wonderful organization effective April 30, 1992. As of May 4, 1992 I will no longer be an employee of the Department of Parks and Recreation.

You do a fantastic job which is so very important, especially during these trying times. I have always been proud to work for Parks and proud to have been affiliated with CSPRA.

God Bless you all, Judy Lemke, Columbia

To: Garlan Salzgeber Pismo Dunes
From: DPR Director's Office
Subject: Comments on Restructure Plan

Thank you for providing comments on the Department's reorganization proposal. Your suggestions were evaluated by both a functional subcommittee and the full Phoenix Committee.

You raise some real concerns over the future management of this Department. I am certainly concerned with retaining good management at all levels in the

organization. If we build a quality park service, I believe good people will want to be part of it at all levels without any fear of stigma.

Your assistance in helping us produce an effective Department organization is appreciated. In this process, the greatest challenge we have faced has been the dual responsibility to reduce the Department's budget and develop a more effective organization. While many suggestions were valid, the cumulative impact of implementing most of the suggestions would have significantly affected our ability to solve our budget problem.

As we move forward during the implementation phase of Department restructuring, I look forward to your continued active support and involvement.

Donald W. Murphy, Director

Dear Doug:

I would like to register my discomfort with the column "Resentment in Parks - R.I.P." in the April-May 1992 Newsletter. As an employee of California State Parks for nearly two decades, I have seen several peaks and valleys. I agree that we are facing a serious fiscal crisis that may worsen before it improves. However, I refuse to acknowledge that the "park family" is dead or that the State Parks should be compared to a "roasted turkey".

As a parent, I want my children to love their parks and to feel good about their world. We cannot expect our children, our visitors or our fellow employees to have much hope if we proclaim betrayal and doom.

Let us fight for what we want, not wail against what we don't want. Let us work towards broader support, greater understanding and better funding, not bemoan the reductions.

I agree the Newsletter should accurately reflect the feelings of our members. However, I hope that we put forward our best hopes, not our worst fears. People read and listen to what we say!!

Sincerely,
Daniel C. Preece, Member

**THE CALIFORNIA STATE PARK
RANGERS ASSOCIATION**
A professional association.

**Executive Manager
Newsletter Editor**

Doug Bryce
P. O. Box 292010
Sacramento, CA 95829-2010
(916) 383-2530
FAX (916) 387-1179

President

Wayne Harrison
Associate State Park Resource Ecologist
Calaveras Big Trees
(209) 795-2334

TREASURER

Kate Foley
Lake Oroville, Chief Ranger
(916) 538-2208

Tyler Conrad
Ranger I
Tule Elk Reserve
(805) 765-5004

DIRECTORS

Ron Schafer
Chino Hills District Superintendent
(714) 780-6222

Calendar

Board Meeting
Sacramento
8/9/92

1993 workshop
Planning Meeting
in San Jose
8/3/92

1993 Workshop
Santa Clara
3/4-7/93

*******DIRECTORS CONTINUED**

John Knott
State Park Superintendent
State Capitol Museum
(916) 324-0312

Kathryn Yee
San Francisco District
(415) 557-4069

CAL RANGER Editor

David Brooks

SAVE BODIE! and all other
committees use CSPRA address.

**For additional information on the
association, write the
Executive Manager.**

The **NEWSLETTER** (ISSN 0887-9176) is
published by CSPRA, P.O. Box
292010, Sacramento, CA 95829. The
NEWSLETTER'S Editor is Doug Bryce;
contributing editors and authors are as
noted. Articles are welcome, 1000 words
or less. All submissions become the prop-
erty of CSPRA and may be edited without
notice. The deadline for articles is the
15th of the month prior to publication.

June

Write
Letters on
Bodie

See pages
1 & 4

1992

california state park rangers association
P. O. Box 292010
Sacramento, CA 95829-2010

To:



Recycled & Recyclable