

Newsletter

California State Park Rangers Association

Volume VI Number 98

April 2000

California Parks Conference — 2000

by Lori Martin

Earlier this month, I had the opportunity to attend the California Parks conference in Van Nuys. This being my second conference, I was looking forward to attending sessions, seeing people and having a good time. I drove from the central coast on Monday and enjoyed seeing snow capped mountains on either side of the Central Valley on my way down. I joked with my traveling companion that the drive was much better than flying into Burbank. After a side trip to visit a friend and academy mate that I had not seen in a few years, and

getting settled in at the hotel it was time to call it a day.



Nick Franco presents Parks Foundation President Susan Smartt with the "CSPRA President's Award" for outstanding service and support to California State Parks.

The next morning I could not wait for my scheduled trip to the Getty museum. The thought of a bus ride with my one-year-old was a different story; luckily I was able to drive the two of us and enjoyed cruising the neighborhoods of Brentwood while he napped in his car seat. The Getty was great, and I could have spent the four hours I was there in just one exhibit room.

(Continued on page 3)

Inside

President's Message	2
Malaprop Man	4
Benicia Capito	5
Matt Sugarman	6
Board Mtg Sched	6
Goals	7
GEC Notes	8
CPC 2000 Photos	9

1999 Election Results

President Elect

Geary Hund 212*

Write in: Ken Simmons 1;
Mike Gross 2

Director

Steve Wagy 133*

Dana Jones 115*

Michael Gross 79

Lisa Mulz 79

Linda Hitchcock 46

Ballots Mailed 575

Ballots returned 230 40%

Newsletter
(ISSN 0887-9176) is
published by CSPRA,
P. O. Box 292010,
Sacramento, CA
95829-2010.
Articles are
welcome, 1,000
words or less. All
submissions become
the
property of CSPRA
and may be edited
without notice.

Web Site

<[http://
members.aol.com/
cspraweb](http://members.aol.com/cspraweb)>

President's Message

by Kim Baker

Proposition 12 passed. It was great hearing Director Areias speak at the parks conference (at the Parks Foundation reception) about his hopes and plans for the department. Later that evening, flares of cheers and hollering could be heard around the hotel complex as early election results were being reported. The next morning, Resource Secretary Mary Nichols spoke about the impact this bond will have on the resources agency, and parks, while reminding us that everyday in our jobs we can impact whether or not future bonds are passed by the people of California.

But it is important to remember that the strong economy that is driving the increased financial support of parks is also driving incredible growth and funding projects that threaten parks everyday.

We should all be celebrating the passing of proposition 12. Finally. The parks we care about are going to get some help. But it is important to remember that the strong economy that is driving the increased financial support of parks is also driving incredible growth and funding projects that threaten parks everyday.

In my neck of the woods, on the San Mateo/Santa Cruz coast, the cumulative impacts of several recent projects will forever leave their mark. Valued as a wild, untouched area, a quick escape from San Francisco and the Silicon Valley, this area has seen a resort built across the highway from Año Nuevo State Reserve, a bed-and-breakfast built at the base of Pigeon Point Lightstation State Historic Park, a private residence built on the hill overlooking Año Nuevo, and now two new residences in view of the reserve, including a 15,000 square foot weekend home, are making their way through the planning process.



What is going on where you work? Are there projects occurring near your parks that will have irreversible impacts? What are you doing about it? You can speak out as a private

California State Park Rangers Association

Mission Statement

The California State Park Rangers Association is an organization of park professionals dedicated to advancement of the highest principles of public service, and established to support, protect, and defend the integrity of State Parks for present and future generations

Founded 1964

For more information about CSPRA and how you can become a member write:

CSPRA
P.O. Box 292010
Sacramento, CA
95829-2010

President's Message (Continued from page 2)

If these projects will have direct, measurable impacts on the parks we have been charged with protecting, then as department employees we should be able to speak out as well. If you feel that can't be done, or if you need another voice, call us. At the minimum, we can write a letter or send a representative to speak at a hearing.

As Californians celebrate the sesquicentennial, we are experiencing growth at a level not seen since the gold rush. Protecting the state's most valued natural and cultural resources is more important than ever before.

CPC 2000 (Continued from page 1)

The reception hosted by the Parks foundation had great turnout, and gave me the opportunity to get reacquainted with old college friends. I was hoping to hear predictions regarding the elections that had taken place that day, I would have to wait till the next morning to learn propositions 12 and 13 had passed. I also missed much of what Director Areias had to say; I was too busy chasing my son around. Where is my physical fitness incentive check? Those of you who attended that evenings tour are sure not to forget your adventure into the real Hollywood any time soon. I heard the bus ride up a steep, curving mountain road was the highlight of the night.

Between sessions as diverse as interpreting the ethnic experience, to death investigation; participants networked, met vendors and placed bids in one of the best silent auctions I have ever seen. The Thursday luncheon held during association meetings was a great idea. Congratulations to Nick and the board for all that they have accomplished over the past year. I'm impressed with the new ideas and the direction the board is taking. From what I heard that day, the board has their work cut out for them over the coming months in their efforts to protect park lands not only from development, but also from the shortage of staff in the field. It is an honor

to have these professionals represent me. During the Honors banquet I was entertained, moved, inspired, and enlightened, not to mention well fed. I also witnessed a possible assault on who was going home with the Smokey the bear toy centerpiece at our table. I can not imagine a more perfect evening. When was the last time you were serenaded during dinner? I still am amazed by Frank Padilla's magic. The guest speaker, Ed Begley Jr., spoke about how priorities have changed and we must remind ourselves as a society that having "stuff" is not what truly matters. I have to admit, a few days later I went to a mall and picked up a copy of the book, "Grandad's Prayers of the Earth", which was read as an invocation by Russ Hauck.

I, or I should say my son, took part in something new offered at this years conference-daycare! Thank you to Anne and Sharlene, for without it available I would not have had the opportunity to attend. I know Joe enjoyed himself, and hopefully in the future others can take advantage of this service.

I was not able to attend any of the field trips offered on Friday and Saturday; I would love to hear how they went. I find it safe to say I am not the only person looking forward to next years conference in Sacramento. Thank you to the Conference Planning Committee, the California State Parks Foundation and California State Lifeguard Association for your time, efforts and donations that went into producing a conference I really enjoyed.

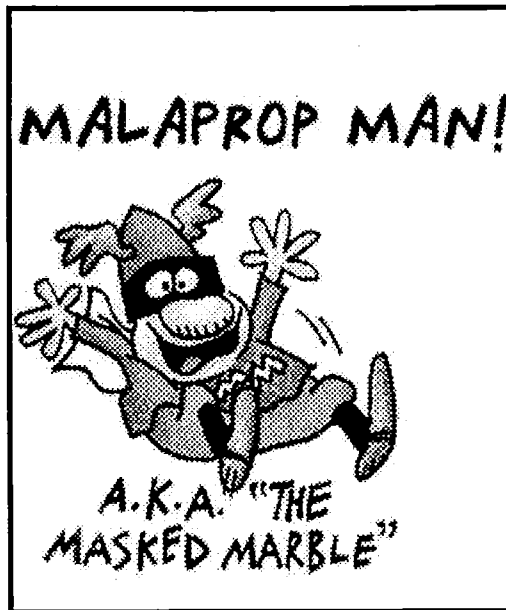
Between sessions as diverse as interpreting the ethnic experience, to death investigation; participants networked, met vendors and placed bids in one of the best silent auctions I have ever seen.

For Sale

**Prophet of the Parks
a biography of
William Penn Mott
by Mary Ellen Butler**

**\$27.00 includes tax
plus \$8 for shipping
second book shipped free.**

**Make check and send order to
CPC 2000
P O Box 292010
Sacramento, CA 95829-2010**



**Lands within
the State Park
System are set
aside for
present and
future genera-
tions to enjoy
forever.
These are not
temporary
boundaries, . . .**

*Sinuously spoken sayings.
by Jeff Price, Marin*

*Slick solution.
That will sure smooth out the waters for
a while.*

*Military charge?
The Army indicted him when he was only
19.*

*Blooper perspectives.
. . . but first I'd like to get your out-takes
on the issue.*

*Hark, what canister is afoot?
That just opens up another Achilles' heel
for us.*

*Welcome to the world of Malaprops.
If you want to go, you are more than
happy to do it.*

*Don't cross state lines!
All the Rangers are busy on a horseback
riding accident, I think they are
having problems extraditing the animal.*

*Scent of obsolescence.
That's so cachet now!*

*Good fake.
I just wanted to blow this idea by some-
one before I started.*

Mono Lake Tufa State Reserve

March 2, 2000
Ms. Joann Ronci, Chair
Mono County Board of Supervisors

Dear Ms. Ronci,

The California State Park Rangers Association (CSPRA) is an organization of park professionals dedicated to advancement of the highest principles of public service, and established to support, protect, and defend the integrity of California State Parks for present and future generations. We are extremely disappointed that the Board of Supervisors initiated action on February 15 which would lead to the elimination of the Mono Lake Tufa State Reserve. The proposed moving of the current boundary is a significant issue and requires notice and public comment.

Lands within the State Park System are set aside for present and future generations to enjoy forever. These are not temporary boundaries, but represent our statewide commitment to the quality of life that such places afford us in this wonderful and diverse state of California. Even if the movement of the boundary did not result in the elimination of the State Reserve, the concept that an area set aside for future generations can be taken back is inappropriate and misguided.

We ask that you reconsider your actions by looking more closely at the potential impact that this action would have to Mono County's tourism industry, educational programs available to schools, protection of the lake, and the statewide precedence of eliminating an existing State Reserve.

Please provide CSPRA and other members of the public the ability to comment on this important issue. This is much more than simply addressing a
(Continued on page 10)

Resolution 22 (Benicia Capitol)

**Filed with Secretary of State
February 18, 2000.**

Adopted in the Senate

February 16, 2000.

Adopted in the Assembly

February 16, 2000

Introduced by Senator Johannessen
(Principal coauthors: Senators Burton and Johnson)
(Principal coauthors: Assembly Members Baugh, Thomson, and Villaraigosa)

February 10, 2000

Senate Concurrent Resolution No. 63—
Relative to the Department of Parks and Recreation.

SCR 63, Johannessen. Department of Parks and Recreation.

This measure would commend the Department of Parks and Recreation for the maintenance of the Benicia State Capitol Building and for their assistance in facilitating the legislative session held there on February 16, 2000.

WHEREAS, The Legislature convened on this date, February 16, 2000, at the State Capitol Building at Benicia to celebrate California's sesquicentennial; and

WHEREAS, Since 1958, the Department of Parks and Recreation, under the auspices of the Resources Agency, has been responsible for the maintenance and administration of the Benicia State Capitol Building; and

WHEREAS, The Department of Parks and Recreation recently facilitated upgrades to the structure, notably the construction of a wheelchair ramp, fire escape, and new stairs; and

WHEREAS, The excellent condition of the State Historic Landmark is a testament to the hard-working employees of the State Parks system; and

WHEREAS, The Benicia State Parks Association was instrumental in overseeing the recent site improvements; and

WHEREAS, The staff of the Benicia Capitol State Historic Park provided eager assistance in the planning of this historic session held at the site on February 16, 2000; and

WHEREAS, Employees and docents of the Department of Parks and Recreation provided guided tours of the Benicia State Capitol to over 3,000 citizens in 1999; and

WHEREAS, The dedicated state employees that serve in the parks system provide Californians, as well as tourists, clean and safe public parks for educational and recreational use; now, therefore, be it

RESOLVED, by the Senate of the State of California, the Assembly thereof concurring, That the Legislature commends the Department of Parks and Recreation for the maintenance of the Benicia State Capitol Building and for their assistance in facilitating the legislative session held there on February 16, 2000; and be it further

RESOLVED, That the Secretary of the Senate transmit suitable copies of this resolution to the Secretary of the Resources Agency, to the Director of Parks and Recreation, to the Benicia State Parks Association, and to the staff of the Benicia Capitol State Historic Park.

For Sale

**CPC 2000 T-shirts
7 Color Logo on lt gray**

**\$7.50 plus \$2 for shipping.
Make check and send order to
CPC 2000**

**P O Box 292010
Sacramento, CA 95829-2010**

March 2, 1972 about 7:45 in the morning, wind blowing across the dock near the Angel Island ferry. Three men gather strangers-all in green uniforms, wearing odd new flat-brimmed hats. Fresh haircuts, sideburns short for the times, long for the job. Strangers. Gig Loomis, Miles Standish, and Matt Sugarman. We meet the boat going to Angel Island and arrive at Golden Gate Headquarters to be greeted by State Park Ranger II Jerry Johnson. Orientation day for three new State Park Ranger trainees.



Photo of Matt Sugarman by Lisa Kinetz.

From Pieces of My Life by Matt Sugarman

Dear CSPRA members,

I never met Matt Sugarman, but when I found his story in my in-box, it grabbed my interest. I took it home after a long day at work, and read it. I found it to be an inspiring and interesting story. When I contacted Matt's widow, Molly, for permission to disseminate Matt's memoir, I received this answer:

I would love to hear from anyone who knew Matt, with their version of his life as a ranger. I only heard one side, as I married him late in his career. I'd love to add to my knowledge of his life be-

fore me. My daughters, who became in every sense of the word his daughters, need to know him better as well. We'd like the funny, the admirable, the mistakes, the human aspects of the man we came to love so much.

Secondly, if any other rangers would like to do what Matt did — dictate their tales for me to edit — I'd be happy to do so. His book is an oral history document. He and I talked about making a book of remembrances of other rangers.

So, if you knew Matt, or feel that you have a story to tell, please contact Molly at msugarman@jps.net. Or contact me and I can help you get in touch. Kim Baker

Board Meetings

All members are welcome to attend board meetings. Meetings are usually scheduled for 10:30-2:00, at the McDowell Building in Old Sacramento. Contact a board member prior to the meeting to confirm.

May 2nd
July 18th
September 12th
November 14th
January 9th
February 24th & 25th,
board retreat

Also note:

October 6, 7 & 8, Retiree's
Rendezvous.
March 15, 16, 17, 18
California Parks Conference,
Sacramento.

Goals

On the weekend of February 26 & 27, the CSPRA board met on Angel Island for a board retreat. The main purpose of the retreat was to revisit our long-term goals and revise our strategic plan from the 1998 retreat. We found that we had achieved many goals and that we still have a lot of work to do in some areas. With the passage of Prop 12, we also anticipated focusing our energy in new areas.

One of the biggest issues facing park integrity is staffing. Although compensation is an important issue, as a park advocacy group it is (arguably) difficult to find a direct nexus between employee compensation and park integrity. However, it is simple to see the impact that insufficient staffing has on our parks. In the past 30 years, California's population has doubled, and it is anticipated that the population will double again by 2025. Systemwide we all feel the impact of increased visitation and acquisitions on our ability to protect and preserve the natural and cultural resources we are charged with defending. We feel that this issue is important to address. How can we pursue innovative programs to address all of the people of California, when we can't even deal with the visitors in our campground? How can we restore and preserve our cultural and natural resources when we don't even have the staff to catalog what we have?

These same issues affect the ability of our organization to accomplish its goals. Since most of us find it necessary to spend "volunteer" hours to accomplish our normal workload, it is difficult to find the time to volunteer to carry out the work of CSPRA, but we'd like to encourage you to try. At the retreat, it became apparent that to reach many of these goals, we were going to need extra member involvement. We don't lack ideas, but the necessary time and energy to carry them out. If you have an interest in spearheading any of the following programs, please let us know.

Speaking to the legislature and legislators about issues:

We need volunteers to speak up! Although our legislative advocate helps keep us up to date on issues and strategies, it is really the voice of the members that carries the most influence. Would you like to know more about how the system works? This is a great way to learn! CSPRA provides a budget to cover travel expenses.

Assist with coordinating new training opportunities: With the new P.O.S.T. requirements for supervisors to have 24 hours training every 2 years, we feel that CSPRA could provide a valuable service by sponsoring park-related training for supervisors in Sacramento. Do you have ideas for making this concept work?

Developing a certification program for park professionals: The idea of a certificate program has been floating around for a while, but without a person with the drive and vision (and time), it won't happen. Are you that person?

Assist with recruiting new members: CSPRA has grown by 17%, an increase of 106 new members in the past year. Most of these new members joined at the request of veteran members (thanks for your help!) Is everyone at your work location a member? Many classifications reimburse employee dues, making a CSPRA membership free.

Contribute drawings, photos or article to the newsletter. Your stories and experiences are fascinating! Share them!

Organize member field trips and work parties in parks.

Participate in grants and programs to further develop CSPRA. Is it time for CSPRA to occupy a visible office? Should we hire an executive director?

Work to develop corporate and private donations and program endowments.

Assist with creating a report to document the inadequate staffing that currently exists in State Parks.

If you would like to help in any of these areas, please contact a board member.

CSPRA GEC Notes 3/9/00

Board Members Present:

Nick Franco, President
 Kim Baker, President Elect
 Jill Dampier, Immediate Past President
 Eileen Bielecki, Secretary/Treasurer
 Geary Hund, Director
 Mike Gross, Director
 Dana Jones, Director
 Kevin Buchanan, Director

Nick reported this past year's activities, including CSPRA's involvement with the Parks Bond and SB 1277 (preventing toll roads through state parks); Angel Island's nomination as one of the 12 Most Historic Places; the membership's increase for the past year (562 - 668); the image poster; CSPRA's website; opposing Bodie Hill's RV Park; Cadet field trips; the BAER Fair; improvement in the Jr. Ranger Program; and publishing the board's e-mail addresses in the newsletter.

Eileen discussed the annual financial report; the members were given the proposed 2000-2001 budget, Mike Lynch moved to pass the proposed budget, Jeff Price seconded, all approved.

Nick was presented with the Past President's Plaque.

Installation of the new Board:

President, Kim Baker; President Elect, Geary Hund; Immediate Past President, Nick Franco; new Director, Steve Wagy; and continuing as Secretary/Treasurer, Eileen Bielecki; and continuing as Directors, Dana Jones, Kevin Buchanan, and Mike Gross.

Jill made a resolution (with five CSPRA member signatures) to change the name of "Junior Past President" to "Immediate Past President". Moved to pass by Susan Grove, seconded, and approved.

New president, Kim Baker, discussed this

year's goals, including: newsletter changes, increased membership and district reps. involvement and sharing information; CSPRA to assist with district representative's cost of the conference; publish board notes in the newsletter; board members to contact district reps. prior to each meeting; increase financial interest income and CSPRA's "wish list" recruiting help from CSPRA's members. Nick recognized the member's concerns regarding staff's low salaries and that State Parks is not competitive in hiring; however this is the union's role not CSPRA's, which is to promote professionalism and integrity of state parks. CSPRA would like to work with the Director to bring these issues to the legislators; it's critical to resource protection and recreation opportunities with the "deferred staffing" that we have now.

Discussion and Member Input:

Member Mike Lynch discussed the International Ranger Federation (IRF) and the World Conference to be in South Africa; e-mail him for current information at: <lynch@psyber.com>.

The 2001 Conference will be held March 15-18 at the Sacramento Holiday Inn (note that it will be Thursday through Sunday).

Jeff Price moved to adjourn, seconded and approved at 1:00 p.m.

Note from Mike Lynch

**I just received word that the
 Ranger World Congress
 in South Africa
 is sold out.**

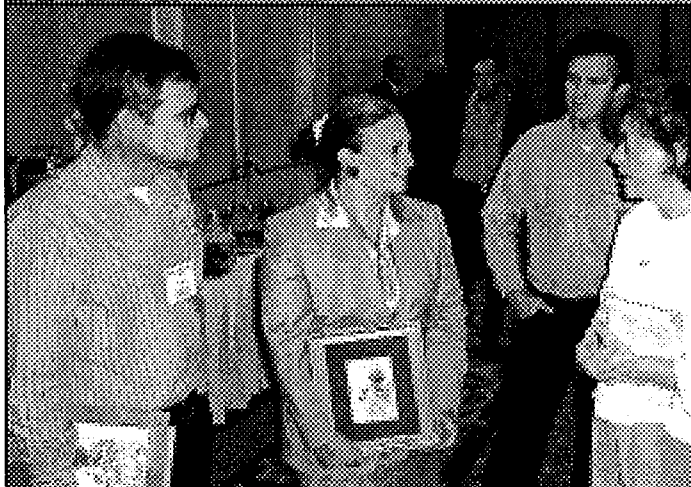
Photo Credits

CPC 2000 photos on page 1 and 9 were by Jeff Price. Photo of Kim Baker on page 2 and of the Board Retreat on page 9 were by Eileen Bielecki.

Panel: Joint Management of the Santa Monica Mountains. L to R. Dan Preece Moderator; Rory Skei, Mountains Conservancy; Arthur Eck, Santa Monica Mountains National Park; George Stigile, County of Los Angeles; and Russ Guiney, Angeles District.



Left: Geary Hund and Conference Keynote Speaker, Resources Secretary Mary Nichols talk with conference attendees.



Right: Jeff Price and Los Angeles County Supervisor, Mike Antonovich display a framed, colored, photo of the conference logo. The framed logos were given to each speaker.



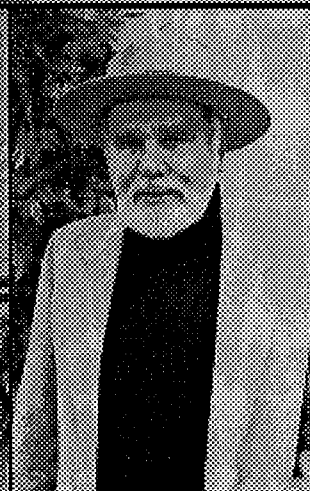
The GEC had the best attendance in years. Do you think the free lunch served at the meeting had anything to do with attendance?



Left: Board members at retreat on Angel Island



Middle: Honorary Member Verl Clausen models his new ranger hat.



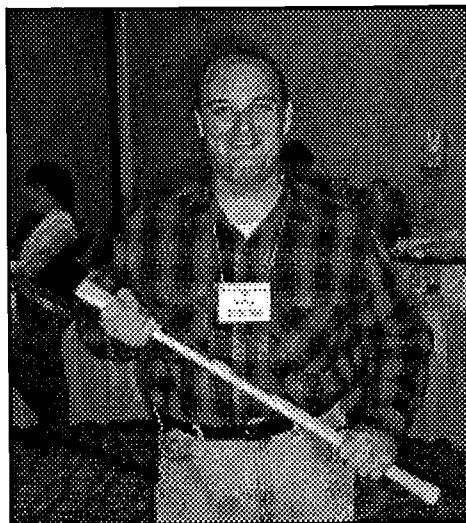
Right: Eileen Bielecki with Director Rusty Areias.



The Silent Auction

by Sandy Ferreira

The Silent Auction was a great success this year making approximately \$2,500. My compliments to Doug Bryce and the planning committee who selected Airtel Plaza Hotel in Van Nuys as our conference site. The proximity of the breakout session rooms to the large room for the Exhibitors and Silent Auction were great. We had 73 items to bid on this year. In fact, I had to graciously decline anymore donations because we were at capacity. (If everyone would let us know what they are bringing before the conference we could be better prepared).



PRAC member,
Mike Chiesa
displays an axe
he won in
the auction.

Russ Hauck's framed poster of his "Ode To A Ranger" was the highest bid item. David Lydick got away with a beautiful carved bear that weighed almost 100 pounds.

I would like to thank Kim Baker and Dorene Clement for helping with the preparation of the auction. Kelly Byrne, who was in charge of registration, assisted with the auction, sales, and exhibitors — thanks to you also. I must thank the students who helped out with the auction and sales and anywhere they were needed.

See you at next years conference in Sacramento — I certainly plan to attend another of our great conferences.

Don't forget your silent auction items — use your creativity and make something for the auction.

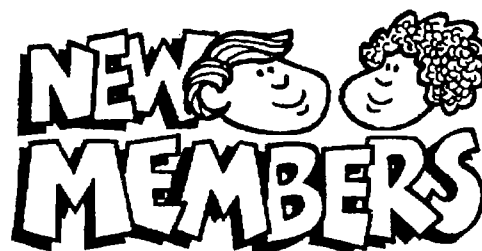
Mono Lake Tufa SR

(Continued from page 5)

property use issue and I believe your decision would have been different had you been given the benefit of public input. Please notify me of the next available hearing on this issue.

Sincerely,
Nicholas Franco, President

cc: Rusty Areias, Director, California State
Parks
Robert Macomber, Sierra District
Superintendent
Mono Lake Tufa State Reserve
Mono Lake Committee
Senator Leslie
Assembly Member Oller



Barbara Sue Baker
Jeffrey J. David
John A. Falk
Mary F. Fitzsimmons
Louis M. Goldich
Pauline Grenbeaux
Steffani Rose Jarrett
Ron A. Krueper
Lynn M. Luzzi
Jeremy A. McReynolds
Katie S. Metraux
I. Maury Morningstar
Sherman L. Poole
Kenneth Mark Sanford
Raymond A. Sauvey
Keenan L. Sederquist
Andrew E. Urlic
Yuk-Hoi Yeung



District Reps

<u>Name</u>	<u>District</u>	<u>Work Phone</u>	<u>Home Phone</u>	<u>FAX</u>
Van Etten-Collins, L.	American River	916 988-0206	530 477-7145	916 988-9062
Padilla, Frank	Angeles, Coast	805 986-8484	818 880-4510	805 488-5367
Crossman, John	Angeles Inland	805 726-1671	805 942-0662	805 940-7327
Edgemon, Chuck	Bay Area-Coast	650 879-2025	650 879-0827	
Nielson, Carl	Bay Area-Diablo	925 837-2525	925 416-0763	925 855-1731
Harrison, Wayne	Calaveras	209 795-3488	209 795-5342	209 795-7306
Robinson, Rondalyn	Channel Coast	805 654-5301	805 654-0895	805 654-4667
Zemon, Jeri	Colorado	760 767-5311		760 767-3427
Stokes, Mary	Four Rivers	209 826-1196	209 632-1627	209 826-1196
Simmons, Kenneth	Gold Rush	916 445-7387		916 327-5655
Maris, Vic	Headquarters	916 653-9315		916 657-1856
Fuzie, Matt	Los Lagos	909 657-0676		909 657-2736
Whitehead, Mike	Marin	415 435-5390		415 435-0850
Moffat, William	Monterey	831 667-0528	831 667-2540	831 667-0523
Grove, Susan	Northern Buttes	530 235-0956		
Jones, Ronald	North Coast	707 946-2409	707 725-4920	707 441-5737
Serpa, Jim	Orange Coast	949 496-5290	949 366-0885	949 496-9469
Vacant	Pismo Dunes			
Joe, Kevin	Russ-Mendocino	707 937-5804	707 877-3592	707 937-2593
Broderick, Karen	Russ-Mendocino	707 847-3286	707 785-3432	
Vacant	So Service Center			
Martino, Mike	San Diego Coast	619 484-4990		
Davis, Jeff	San Joaquin	209 822-2332		209 822-2319
Knapp, Eric	San Luis Obispo	805 772-7434	805 927-3516	805 541-4799
Van Schmus, James	San Simeon	805 927-2020	805 772-9166	805 927-2031
Sherr, Christy	Santa Cruz	831 338-8861		
Lindsey, Tom	Sierra	530 525-7232		530 525-6730
Nixon, Valerie	Silverado	707 279-4293	707 279-7713	707 279-0401

The District Reps are your best connection with the board.
Give them your ideas, suggestions, questions and complaints.

Do You Know Someone Who is Retiring?**Please Order Their Plaque Now!**

Yes, CSPRA provides a plaque for each member when they retire if a friend, supervisor, spouse or even the employee themselves will let us know the following:

Name to appear on plaque: _____

Number of years employed by DPR: _____

Employee would like to be remembered as a Ranger, Superintendent or: _____

Send plaque to CSPRA member _____ for presentation on _____. The address the plaque should be sent to is: _____

**C S P R A
Finances**

Checking
\$1,660.85

General Savings
\$14,505.70

SAVE BODIE!
\$1,234.87

Whitehead Award \$419.62

April/May



2000

California State Park Rangers Assoc
P O Box 292010
Sacramento, CA 95829-2010

Bulk Rate
U.S. Postage
Paid
Permit
Number 43
Elk Grove, CA

Calendar
Board Meetings

May 2

July 18

September 12

November 14

January 9, 2001

Board Retreat
2001

February 24 & 25

Retiree's
Rendezvous
October 5 — 8

Cal Parks
Conference
2001

Sacramento
Holiday Inn NE
March 15-18

Directors Continued

Dana Jones
State Park Sup't. I
Mineral & Mining Museum
(209) 742-7625
e-Mail <rangerdjones@hotmail.com>
^^^

Kevin Buchanan
Supervising Ranger
San Joaquin District
(559) 822-2247
e-Mail: <cspradir1@aol.com>
^^^

Mike Gross
Supervising Ranger
Northern Buttes District
(530) 538-2201
<mgros@parks.ca.gov>
^^^

All committees use CSPRA address. For
additional information, write to:

CSPRA
P O Box 292010
Sacramento, CA 95829-2010
(800) 994-2530
FAX (916) 387-1179
e-Mail <dcbryce@earthlink.net>

Web Site

<<http://www.cspra.com>>

President
Kim Baker
State Park Ranger
Bay Area District
(650) 726-8819
e-Mail <kimbaker@jps.net>
^^^

President Elect
Geary Hund
Associate St Pk Res Ecologist
Los Lagos District
(909) 940-5617
e-Mail <gearyh@pe.net>
^^^

Secretary/Treasurer
Eileen Bielecki
State Park Ranger
Marin District
(415) 388-3653
e-Mail <bontam@msn.com>
^^^

Jr. Past President
Nick Franco
State Park Sup't. I
Angel Island
(415) 789-9344
e-Mail <nfranco@jps.net>
^^^

Directors
Steve Wagy
Training Specialist
Mott Training Center
(831) 699-2959
E-Mail <stevew@parks.ca.gov>
^^^