



*The CSPRA*

# *Wave*

*Newsletter*

VOLUME 7, NUMBER 3

CALIFORNIA STATE PARK RANGERS ASSOCIATION

MAY - JUNE 2007

## A POWERLINE ACROSS ANZA-BORREGO?



Powerline Threat: p. 3, 4  
Bidwell/Ide Adobe, p. 5-7

Allensworth Issue: p. 2, 11

Parks Conference, p. 8, 9  
Honorary Ranger Award, page 10



## CSPRA OFFICERS

### PRESIDENT

**Gail Sevens**, No. Service Center  
(916) 595-2167, gail@cspra.com

### SECRETARY

**Natalie Lohi**, Mendocino  
(707)367-1324, natalie@cspra.com

### TREASURER

**Wendy Martin**, Diablo Vista, Bay Sector  
(925)673-2894, wendy@cspra.com

### IMMEDIATE PAST PRESIDENT

**Angy Nowicki**, Silverado  
(707) 538-8734 , angy@cspra.com

### DIRECTORS

**Brett Mizeur**, Castle Crags  
(530)235-2684, brett@cspra.com

**Sal Goshorn**, Orange Coast  
(714)377-5691, sal@cspra.com

**Dave Gould**, Marin  
(707)769-5665 x 224, dave@cspra.com

**Rain Greenslate**, Big Sur  
(831)667-2179, rain@cspra.com

**Tyson Butzke**, Channel Coast, Gaviota  
(805)968-3852, tyson@cspra.com

### ADMINISTRATION

**Allison Pedley**, Executive Manager  
P.O. Box 10606, Truckee, CA 96162  
(530) 550-1268  
allison@cspra.com

### INTERNET COMMUNICATIONS

**Jeff Price**, Webmaster  
(805)278-9201, webmaster@cspra.com  
www.cspra.com

### The CSPRA Wave

**Janet Carle**, Editor  
(760)647-6431, wave@cspra.com

### The CSPRA Wave

(ISSN0087-9176)

is published by CSPRA, P.O. Box 10606,  
Truckee, CA 96162

Articles and letters are always welcome.  
All submissions become the property of  
CSPRA and may be edited without notice.  
Cover photo: *Anza-Borrego* by *Paul Johnson, Colorado Desert District*

## WHAT CSPRA IS DOING FOR YOU



*CSPRA President Gail Sevens  
accepted the gavel from Angy Nowicki  
at the 2007 Parks Conference*

*by Gail Sevens*

**Josephine Smith is 92 years old. She is the granddaughter of Colonel Allen Allensworth**, an

escaped slave, Civil War fighter and infantry chaplain who founded California's only town by and for African Americans.

Last week, she traveled to Sacramento and watched as legislative leaders, including the Speaker of the Assembly **Fabian Nuñez**, fronted a rally to pay homage to her grandfather's place in California history and exhort the gathered television cameras to protect the park that brings that history alive. She later watched as speaker after speaker told the Assembly Water, Parks, and Wildlife Committee that two proposed megadairies next to the park and their 12,000 cows would drive away visitors with odors, flies, and dust, and impede the sharing of that history.

The Committee was evaluating a bill, AB 576, by **Wilmer Amina Carter**, that would provide a 2.5-mile dairy-free buffer around **Colonel Allensworth SHP** to protect it from such impacts. While opponents asserted that the bill meddles in local land use decisions, proponents pointed out that the park is a statewide

resource entitled to be protected from impacts caused by neighbors.

Supporters of the bill numbered so many that they could not all fit in the hearing room at one time. The committee chair limited comments from the floor to name, organization, and position. When it was my turn, I stated, "My name is Gail Sevens, I am the president of the California State Park Rangers Association, and our 750 members ask for your support."

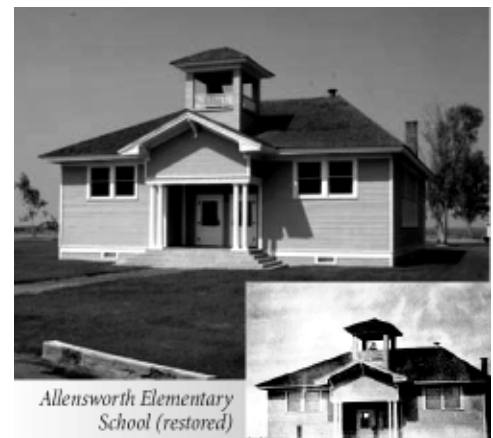
Walking back from the podium, a woman touched my shoulder and elatedly said, "Go rangers!"

Our voice was heard.

And a wonderful thing happened. The

bill passed the committee and will go to the floor of the Assembly. Hopefully, by the time you read this, it will have passed the legislature, been signed into law, and become effective.

But this testimony is not the only way our voice was heard. Executive Manager **Allison Pedley** penned a CSPRA support letter to the committee. When the dairy project was before the local Board of Supervisors, CSPRA wrote, pointing out the flaws in the project's EIR, which hadn't considered the odor, flies, and dust to be an impact. Nonetheless, the Board certified that EIR. This week we wrote to Attorney General **Jerry Brown**, asking him to challenge the legality of



*Allensworth Elementary  
School (restored)*

# ***Sempra vs. Anza-Borrego Desert SP***

## ***The Sunrise Powerlink Threat***

### ***Are Parks Forever?***

by **Diana Lindsay**

*Vice- President Environmental Affairs  
Anza-Borrego Foundation & Institute*

In recent decades, a variety of proposals and schemes have threatened both National and State Parks. And now, Sempra/San Diego Gas & Electric has put forth plans for a 500-kilovolt east-to-west energy super-highway across 23 miles of Anza-Borrego Desert State Park. From Ocotillo Wells, their preferred route would follow Highway 78, then angle up Grapevine Canyon. The path would take advantage of a long held easement currently used by a lower voltage line strung on relatively inconspicuous 40 foot poles. The towers for the 500-kilovolt line would be three times that – or more, as much as 200 feet, the height of a 20 story building.

There is no question that this would create a tremendous – and

dismal – visual blight, with the towers within sight of an estimated 90,000 acres of otherwise serene and timeless Park land. It would even be visible from the Park's famed Fonts Point

and its view into the badlands. It would directly impact three state wilderness areas and the view shed of five wilderness areas. Open and

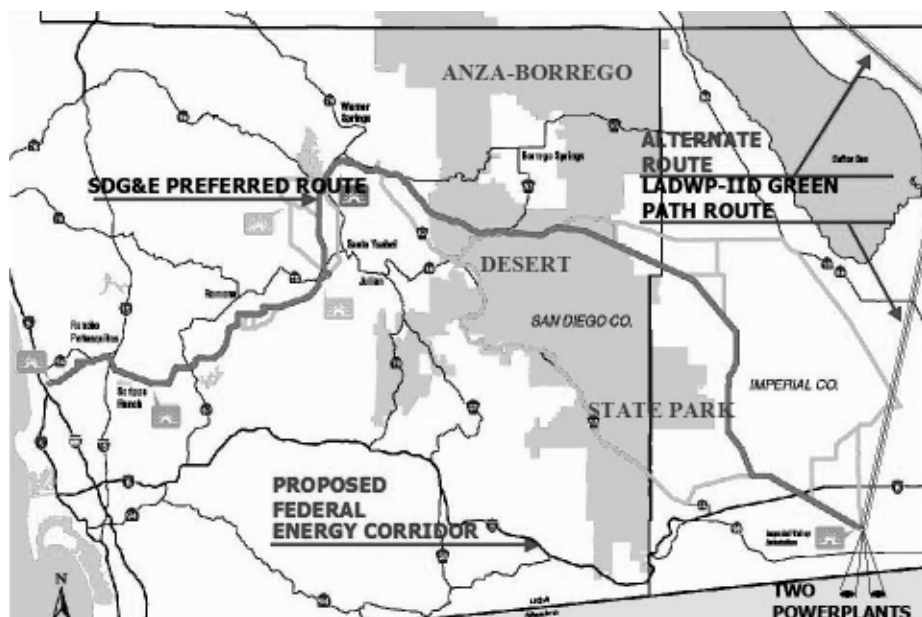


designated camping areas would be impacted. Who would want to stay at Tamarisk Grove or nearby Yaqui Well with power lines humming and

be disturbed. And, the line would impact travel corridors frequented by the Park's namesake—the Peninsular Bighorn Sheep (*Borrego Cimmarrón* in Spanish). Service roads would have to be constructed, and the threat of fire would be very real. In the words of State Parks Director Ruth Coleman, "This project... would forever change the character of this pristine Park and wilderness area."

As to the wilderness she mentions, plans call for some 73 acres of it to be forfeited – "de-designated." This would be a first. Never before has this been mandated in a State or

National Park or any wilderness area. It sets a bad precedent. Our desert could well become a test case for a long-held American philosophy that "Parks are Forever." Parks were originally set aside for their intrinsic value for future generations to enjoy. Will we set that legacy aside and make Parks holding grounds for



future development?

In the course of the line's construction archaeological sites would be degraded and destroyed; the habitats of sensitive plants and animals would

future development?

Yet all this needn't be.

A better, far better, scenario would be for SDG&E and its parent company

**See POWERLINE, page 4**

*The CSPRA Wave*, May-June 2007 **3**

## POWERLINE

### POWERLINE, from page 3

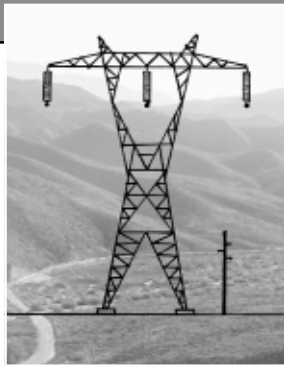
Sempra to opt for a power-line skirting the Park either to the north or, preferably, to the south, where it could parallel Interstate 8. The company has offered many and facile arguments opposing this, including threats of terrorism and forest fires (in the desert?). Their bottom line, however, appears to be just that: a bottom line of higher cost and greater difficulty. Anza-Borrego is simply viewed by SDG&E as the path of least resistance and of greater profitability.

Consider, in this context, a statement by Park Director **Ruth Coleman** to California's Public Utilities Commission: "...an environmentally superior alternative [i.e., avoiding the Park] may not be SDG&E's preferred choice, but it may be superior for the citizens of California."

SDG&E simply needs to stop focusing on ruining our Park and start looking at ways to create a smarter energy future for San Diego. San Diego needs smart energy solutions that don't threaten our irreplaceable natural heritage.

There are "No Wires" alternatives that would meet San Diego's energy needs, but it would not be profitable for SDG&E's shareholders. The "No Wires" alternatives would avoid power losses over long transmission lines and improve grid security. Some of these alternatives include: roof top solar panels, energy conservation, wind turbines in non-sensitive areas, upgrading existing transmission lines and generators, and other smart energy solutions.

Our children and grandchildren deserve a better future than what SDG&E is offering them. It is up to us to mobilize and to speak up for this silent generation and to protect their legacy. You can help by making a donation to the legal fund that is fighting the Sunrise Powerlink. Send donations to the "Sunrise Powerlink



Fund" at the Anza-Borrego Foundation and Institute (ABFI) at POB 2001, Borrego Springs, CA 92004, or donate on line at [www.theabf.org](http://www.theabf.org). You can also share your thoughts and sentiments with your friends and associates, and with key local and state officials—see the list below.

Those organization who have formally banded together to form a coalition and to fight Sunrise Powerlink include: ABFI, CSPRA, California State Parks Foundation, the Center for Biological Diversity, the Sierra Club, the Audubon Society, the Desert Protective Council, the California Wilderness Coalition, the California Native Plant Society, the Pacific Crest Trail Association, the Environmental Health Coalition, the Natural Resources Defense Council, the Back Country Coalition, and

numerous local organizations, land owners, and businesses.

Together, we can make the sun set on the Sunrise Powerlink.

Some key addresses:

Governor Arnold Schwarzenegger  
State Capitol Building, Sacramento,  
CA 95814; [www.govmail.ca.gov](http://www.govmail.ca.gov)  
Fax: (916) 445-4633

Bobby Shriver, Chair  
CA Parks and Rec. Commission  
P.O. Box 942896, Sacramento, CA  
94296-0001; [LNastro@parks.ca.gov](mailto:LNastro@parks.ca.gov)  
Fax: (916) 653-4458

Ruth Coleman, State Parks Director  
1416 9<sup>th</sup> Street, Sacramento, CA  
95814; [info@parks.ca.gov](mailto:info@parks.ca.gov)  
Fax: (916) 657-3903

Billie Blanchard, Project Manager  
Cal. Public Utilities Commission  
505 Van Ness Avenue, San Francisco,  
CA 94102; [bcbl@cpuc.ca.gov](mailto:bcbl@cpuc.ca.gov)  
Fax: (415) 703-2200

Your own state and federal elected officials. Find out who they are at these websites:


<http://192.234.213.69/amapsearch/framepage.asp>

<http://www.house.gov/writerep/>

[http://www.senate.gov/general/contact\\_information/senators\\_cfm.cfm](http://www.senate.gov/general/contact_information/senators_cfm.cfm)

FIELD EQUIPMENT ♦ FISH PRINTING
ACTIVITY BOOKS ♦ TRACK REPLICAS & MOLDS

COME VISIT OUR NEW CENTER FOR SCIENCE  
AND ENVIRONMENTAL EDUCATION



**Acorn Naturalists**  
155 El Camino Real, Tustin, CA 92780  
Phone (800) 422-8886 / Fax (800) 452-2802  
[www.acornnaturalists.com](http://www.acornnaturalists.com)

Free catalog of resources for rangers, interpreters & naturalists

RESOURCES FOR INTERPRETERS ♦ FIELD GUIDES
OUTDOOR EDUCATION ♦ VIDEOS

## NORTHERN BUTTES DISTRICT - VALLEY SECTOR

*The Valley Sector of the Northern Buttes District consists of six parks which offer a multitude of visitor experiences: Bidwell-Sacramento River State Park, Colusa-Sacramento River SRA, Woodson Bridge SRA, Bidwell Mansion SHP, William B. Ide Adobe SHP and a State Park in the Sutter Buttes (which has been classified, but not yet named). These parks represent the diversity of the Sacramento valley. The River parks host boating and fishing, while the Sutter Buttes is a natural and cultural oasis. The two historic parks enable visitors to learn about the history of the area, dating back to before California's statehood.*

# BIDWELL MANSION

by **Amber Drake**, Guide I

Ask anyone in Chico if they know the name of the city's founder, and few would fail to conjure the name Bidwell. The city boasts one of the country's largest municipal parks, Bidwell Park, and the Bidwell name can be found on everything from schools, streets, and churches to coffee shops, salons and storage units. The name of the city's founder endures more than 100 years after his death. But few realize John Bidwell's significance to both the state of California and to 19<sup>th</sup> century America.

Bidwell Mansion SHP celebrates the life and contributions of Chico's forward-thinking founder. A State Park since 1964, the visitor experience focuses of touring the three-story Italianate home that John Bidwell shared with his wife, Annie. The tours highlight John's role in early California history. A pioneer with the first overland party to cross the Sierras in 1841 (five years before the Donner Party), Bidwell later found himself a reluctant member of the Bear Flag revolt, helping draft the resolution of independence. Employed by John Sutter in 1848, John Bidwell was among the first to learn of the gold found on Sutter's property, taking the

prophetic nugget to San Francisco to confirm its stunning authenticity. Bidwell soon found gold of his own, using his profits to purchase over 26,000 acres stretching between the Sacramento River and the foothills. The Gold Rush allowed John Bidwell to start one of the most diversified and innovative ranches in all of California. In 1864, Bidwell was elected to serve

customs and context of their times. The fully-furnished Victorian house offers a wealth of fascinating artifacts depicting 1800s lifestyle, while the historic grounds demand attention and appreciation. With so many themes to explore, one of the greatest difficulties is deciding what to leave out.

The Mansion itself was used as a college dorm in the 1920s and 30s. Converted into classrooms and offices in the 40s and 50s, State Parks acquired the house with many modifications and additions to the original 1868 structure. Restoration has been an on-going process, now in its fifth decade. Since 2000, visitors have been treated to some long-awaited additions to the tour. The original



Californians in the House of Representatives, and later ran for governor (a total of three unsuccessful times). In 1892, at the age of seventy-two, Bidwell ran for president of the United States.

Visitors are often surprised by the extent of Bidwell's historical contributions. One of the challenges faced by staff is finding a balance between provoking interest in the Bidwells' personal history and interpreting the

kitchen and laundry room have been restored, both offering guests a bold visual on the progress made in technology since the late 1800s.

One of the most exciting aspects of working at the park is the opportunity to interpret the park to school children. Focusing on third and

**See BIDWELL, page 7**

# *William B. Ide Adobe SHP*

## *Small Park – Big Happenings*

by **Debbie Chakarun**  
*State Park Interpreter I*

The Adobe at Ide Adobe Park is nestled snugly under a mighty Valley Oak along the banks of the Sacramento River with a beautiful view of Mount Lassen. Just a half mile off of Interstate 5, on the north end of Red Bluff, the park offers an ideal picnic site and respite from the monotony and sometimes extreme summer heat to travelers along one of California's main north-south travel arteries. Once you've relaxed at Ide Adobe – you always come back.

The most commonly asked question at Ide Adobe Park is "Who was Ide Adobe?" (the location of the restrooms is very obvious). An explanation ranging from a few brief sentences to a walk around the grounds with an in-depth tour of the Adobe ensues. Explaining that the Adobe in "Ide Adobe" refers to the adobe house and the person is Mr. William B. Ide not Mr. Ide Adobe, staff then goes on to explain that William Ide did not actually build the Adobe and he did not actually live in it. As you can well imagine there are several questions after this explanation.

William B. Ide was a prominent figure in the Bear Flag Revolt of 1846. Although the Bear Flag Republic lasted only twenty-two days, Ide played an important role. He wrote a proclamation setting the goals of the new California Republic and he is often referred to as the President of the Bear Flag Republic. Ide was an important leader in this often overlooked segment of California's history.

William B. Ide Adobe State Historic

**6** CSPRA *Wave*, May-June, 2007



Park was acquired by CA State Parks in 1951. At the time of the acquisition and naming of the park it was believed that William Ide had built and lived in the Adobe. In the early 1980s, when the General Plan was being written, closer scrutiny of the facts could not verify that Ide had built or even lived in the Adobe. The first records show the property as being purchased in 1852 by Abraham Dibble, who built an adobe home on it in April of the same year. The Adobe changed ownership twenty-one times before it was acquired by



*Old office...  
...and new*



the state. At the time of the adoption of the General Plan it was decided to keep the name William B. Ide Adobe SHP and to continue interpreting the importance of the Bear Flag Revolt, Ide's role as a prominent figure in California's history, as well as the lifestyle of pioneers in the 1850s.

In 2004, CalTrans built an off-ramp from Interstate 5 onto Adobe Road. This cut the three mile drive through town to get to the park to a straight shot half mile. Realizing how this would impact the park, quick thinking District staff member Roger Calloway wrote and received a Mitigation Grant from CalTrans to help build a new parking lot, office and Visitor Center to meet the demands of the expected increase in visitation.

After forty years of Park operations out of a ten by fifty foot trailer, (used to house the 1960 Olympic Ski Team at Squaw Valley) the Park can now proudly boast of having a new paved parking lot, Visitor Center, and office.

Every Tuesday and Thursday in spring the environmental studies program Life in the 1850s takes place. Fourth grade students spend the entire day learning the skills they will need to survive on the California frontier. The premise of the program is that the fourth graders are survivors of an ill fated wagon train – much like the

Donner Party. In order to survive they must learn pioneer skills (taught by high school docents in period attire) essential to prospering on the frontier. They learn woodworking skills, attend a schooling session, make ropes, participate in adobe brick making, dip candles and cook their dinner in the adobe fireplace.

*See IDE ADOBE, page 7*

## IDE ADOBE

### *IDE ADOBE, from page 6*

With the addition of the new facilities, park programs continue with much more ease. The new office contains an industrial size sink for doing dishes after programs, a men's and women's changing room, a washer and dryer, storage space and a stove that really works! Park staff, docents and volunteers are all smiling because they now have room to move and a comfortable place to work. The Visitor Center provides information on William Ide and the Bear Flag Revolt, gives a glimpse of early transportation on the Sacramento River, portrays pioneer lifestyles and even has a nice sales counter for the Ide Adobe Interpretive Association.

There are some days that Ide Adobe appears to be a quiet, sleepy little park with nothing going on. Behind the scenes park staff is busy either cleaning up or preparing for the next event. The Park hosts three special events each year, Adobe Day, the Adobe Ferry Championship Horseshoe Pitchers Contest and Pioneer Christmas Party. Each event is rooted in the 1850s time period and is complete with costumed volunteers and docents

inviting visitors to try their hand at such activities as adobe brick making, rope making, woodworking, tin punching, quilting, log sawing, butter churning and a host of other activities. At the Horseshoe Tourney teams compete with 'shoes straight off the hoof' to take home a gold filled pocket watch.

This year the Park received Volunteer Enhancement funds to complete a 1850s Blacksmith Shop started back in the 1990s with the Woodshop. Progress is coming along nicely. It will contain a forge, great bellows and lots of period tools essential to blacksmithing.

So if you find yourself driving on Highway number five and see the exit sign saying Adobe Road, take the exit and you will be glad you did!



*Special events at Ide Adobe include dancing (above) and hair curling (below)*



### *BIDWELL, from page 5*

fourth grade curriculum, staff offers tours of the house and developmentally appropriate hands-on programs, including a program that features 1800s gadgets and lifestyle, and a Gold Rush program that allows



children to pan for gold. While the children are guaranteed to find some gold flakes, allowing them to try their hand at gold panning is a great way to give them a taste of the experience of early Californians.

Whether your interest is early California history, 1800s lifestyle, architecture or even botany, Bidwell Mansion State Historic Park is a great place to step back in time and learn more about one of California's founding fathers.

# PARKS ROCKED IN THE SIERRA!

by **Janet Carle**, WAVE Editor

Warm, mild weather greeted over 300 of us at Tenaya Lodge, despite the fact that a foot of snow was on the ground. It turned out to be a great combination for snow play in the sun. It was especially nice to see so many young children in attendance, enjoying sledding and the hotel pool.

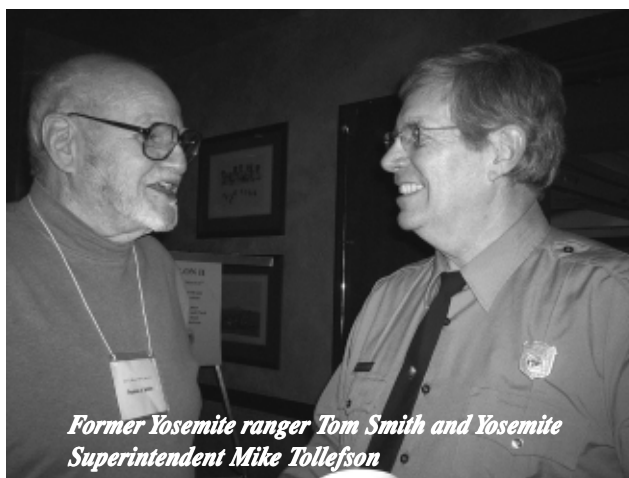
Monday field trips included visits to the Mining and Mineral Museum in Mariposa, a behind-the-scenes tour of the new exhibits at the Yosemite Valley Visitor Center and the traditional pistol competition. The conference officially opened with a reception hosted by the State Parks Foundation. Old friends were greeted and new friends made as we admired the view of snowy hills and conifers. **Mike Lynch** (below), park historian



and collector extraordinaire, entertained the crowd with a program on Galen Clark, the nation's first park ranger, who began his career in Yosemite in 1866. Being only a few miles from the place where it all began made insight into Guardian Galen especially appropriate.

Yosemite Superintendent **Mike Tollefson** opened Tuesday morning with a keynote address on the challenges facing the iconic National **8CSPRA Wave**, May-June, 2007

Park. One recently completed project is the Yosemite Falls trailhead improvements, which removed a parking



*Former Yosemite ranger Tom Smith and Yosemite Superintendent Mike Tollefson*

lot, replaced a restroom, and built a new, accessible trail to the lower Falls. Other recent accomplishments are the removal of Cascade Dam, re-locating sewer lines out of the Valley's meadows, and a re-do of the Valley Visitor Center's exhibits. Yosemite is setting a national precedent with its fleet of hybrid shuttle buses and improved housing for concessionaire employees.

Challenges remain, however, as the Merced River Plan has stalled in court for the 3<sup>rd</sup> time. A major rockslide on the river between El Portal and Mariposa has affected bus traffic and employees' commutes. Budgets continue to shrink, though the 2008 version promises more dollars. Tollefson is especially proud of 2 sister parks and an exchange program with park professionals from China, as well as a new sister park in Chile. All in all, the

first California State Park (Yosemite was turned over to the federal government in 1906) is doing well and continuing to provide enjoyment

to millions of visitors while protecting its magnificent resources.

An especially well-attended Tuesday session was a panel discussion on the future of the "generalist ranger". DPR Deputy Director of Operations **Ted Jackson**, retired

NPS Ranger **Tom Smith**, Sacramento County Ranger **John Havicon**, and retired State Park Superintendent **Joe Mette** provided their insights, followed by a group discussion. Safety retirement, POST required training, understaffed parks, military-style "stress" academies— all are factors that influence recruitment, retention and a ranger's behavior and discretion on the job. A few selected comments: "A ranger is everything to everybody". "It's easier to make a



*Tom Smith, John Havicon, Ted Jackson, and Joe Mette: the "Generalist Ranger" panel*

law enforcement officer out of a park ranger than a ranger out of a law enforcement officer." "Supervisors need to require their rangers to do the whole job." "Don't allow the required

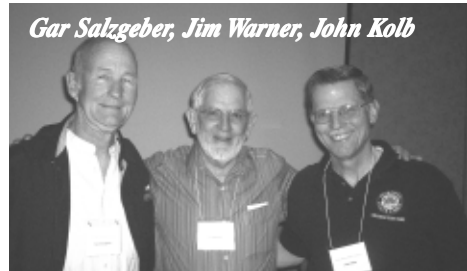
**See CONFERENCE, page 9**

## PARKS CONFERENCE

### CONFERENCE, from page 8

training to define the job.” DPR Director **Ruth Coleman** has formed a task force to look at the status and future of the generalist ranger, so more will be heard on this subject. Other Tuesday sessions included Conflict Resolution, Science Toys, Artificial Nest Structures for Raptors and Lizard Abundance—a wide range indeed!

The Yosemite location also inspired a session on the State-Federal Exchange Ranger Program of the 1970’s. Retired DPR Superintendent



*Gar Salzgeber, Jim Warner, John Kolb*

**John Kolb**, who spent a year in Yosemite early in his career, moderated this look into a program that greatly inspired the lucky few that participated. Retired NPS District Naturalist **Jim Warner**, who went to Big Basin, and Retired DPR Ranger **Gar Salzgeber**, who went to Yosemite, added their reminiscences to the discussion. Both Gar and John fondly remembered the ups and downs of horse patrol!

A special treat on Tuesday evening was a dinner at the historic Wawona Hotel, complete with a visit from John Muir, as portrayed by **Lee Stetson**.

Mild weather continued on Wednesday, as CSPRA held its annual membership meeting. Outgoing President **Angy Nowicki** passed the gavel to **Gail Sevrems**, who will serve a two year term. Gail challenged all present to recruit 2 new members in the coming year (all recruiters and new members also receive a CSPRA day pack). New Board members **Rain Greenslate, Wendy Martin, Tyson Butzke** and **Dave Gould** were

welcomed, and outgoing Board members **Joe Mette** and **Ron Brean** were thanked. Lobbyist **Monica Miller** gave an update on legislative bills affecting state parks and encouraged all of us to invite legislators out to the parks and engage them in our issues. Director **Ruth Coleman** and Deputy Director for Communications **Roy Sterns** also attended the meeting.

Ms. Coleman discussed the Big Lagoon Casino threat (hopefully, it can be moved to Barstow), the OHV program sunset date, the Anza-Borrego Powerline proposal, the Allensworth Dairy proposal, the San Onofre Toll Road, and the cut in deferred maintenance dollars. She

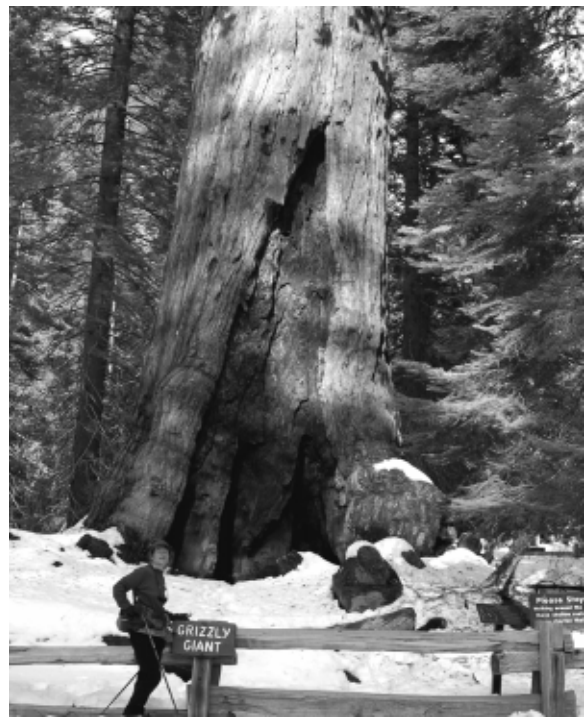
also discussed the Generalist Ranger Task Force, which will explore whether the concept continues to be effective and, if so, how it can be reinforced through training, budget and supervision to re-instill core values.

**Dave** and I skied into the Mariposa Grove on Wednesday afternoon.

Seeing the majestic trees in winter for the first time was a special treat, though not done casually—it’s a 5 ½ mile round trip!

We gathered together one last time at the banquet, which featured the CSPRA Honorary Ranger and PRAC Honorary Member awards. Raffle prizes were won and the dancing began.

As we shared the hot tub under a starry sky (to relieve sore muscles after the big ski!) with fellow park professionals after a long day, we all agreed that this was one of the best California Parks Conferences ever. Yosemite lived up to its reputation of a magical place, and much was learned and shared in the shadow of the Big Trees.



*Dana Jones and John Havicon, conference co-chairs*

## HONORARY RANGER, 2007

# *CSPRA Honorary Ranger, Caryl Hart*

**Caryl Hart** received the 2007 Honorary Ranger Award from CSPRA at the California Parks Conference. In his nomination of Ms. Hart for this honor, CSPRA Board Member **Joe Mette** high-



lighted her consistent and passionate advocacy for the mission of California State Parks.

Ms. Hart worked as a Public Defender in San Francisco and Marin counties, where her appreciation and love of the surrounding open spaces eventually steered her to conservation interests.

Hart also served as Chair of the Open Space Citizens Advisory Committee to the Sonoma Co. Agricultural Preservation and Open Space District and as President of the Nathan Ohrbach Foundation. She is also a founding member of LandPaths, an environmental land trust in Sonoma County.

In 2000, she was appointed to serve on the California State Parks and Recreation Commission by Gov. Gray Davis. Most recently, she completed Doctoral

studies at UC Berkeley's Department of Environmental Science, Policy and Management.

CSPRA is proud to present Caryl Hart with its highest honor of Honorary Ranger!



**Victoria Araujo**, 1988 Honorary Ranger, with **Caryl** at the banquet. **Caryl** participated in Parks Advocacy Day (see page 13).

# *PRAC Honorary Member, David Brooks*

**David Brooks** was awarded this year's Honorary Lifetime Member Award from the Park Rangers Association of California. Mr. Brooks has worked for many years as a Park Ranger for the City of Santa Cruz Water Department, managing their drinking water reservoir, Loch Lomond. He was the co-editor of the Cal Ranger Newsletter from 1990-92. Since 1992, he has edited the Signpost newsletter for PRAC. Mr. Brooks has served 7 different PRAC Presidents and published over 90 issues. PRAC greatly appreciates Mr. Brooks many years of service as newsletter editor, and proudly presented him the Honorary Member award at the Parks Conference.



**PRAC President Lee Hickinbotham, Jr.** presented the award to **David**



**THE 2008 CALIFORNIA PARKS CONFERENCE will be in SOUTH LAKE TAHOE, at the Embassy Suites Hotel, MARCH 30 - APRIL 3**

## AWARDS

# Ranger Kent Miller Receives MADD Award

by **Nedra Martinez**  
Sector Superintendent

March 31<sup>st</sup> was a very proud night for Supervising Ranger **Kent Miller** of Ocotillo Wells State Vehicular Recreation Area. Division Chief, **Phil Jenkins**, Sector Superintendent **Nedra Martinez** and **Kent Miller** attended the 2007 Statewide Law Enforcement and Community Recognition Awards.

Over 180 agencies and officers were honored at this event held at the Sheraton Grand in Sacramento. This event is held to honor and recognize all of those officers who have contributed to the fight against impaired driving. MADD (Mother's



Against Drunk Driving) asks each agency to submit the name of an officer who has shown an exemplary effort toward stopping drunk driving, supporting the victims of this violent crime, and/or preventing underage

drinking. Supervising Ranger Kent Miller was nominated for this award because he is one of those officers.

**Kent Miller** has taken a leadership role in lowering the number of alcohol related accidents and fatalities at Ocotillo Wells SVRA. His participation in the Policy Panel to Prevent Youth Access to Alcohol, his ability to bring other agencies to the park to assist our Rangers in targeting alcohol activities and his securing of an grant from the Office of Traffic Safety has demonstrated his commitment to MADD's mission. We, at Ocotillo Wells and the OHMVR Division are very grateful to Kent for all of his hard work in this area.

### **ALLENSWORTH, from page 2**

the EIR and its omissions. All week long his office had been noncommittal on the issue, but Friday morning I opened the paper and saw that he had heard us and was filing the challenge!

Did CSPRA accomplish this on its own? Of course not. The busloads of Allensworth supporters from across the state had a huge impact. The park's cooperating association, Friends of Allensworth, helped organize and bring out the crowd. The California State Park Foundation spoke at the rally and the hearing and lobbied the committee. The Center for Race, Poverty, and the Environment and the National Resources Defense Council spoke and are also filing legal challenges to the EIR. The California Legislative Black Caucus, led by **Mervyn Dymally**, rallied and supported the bill. Assemblymember **John Laird** stood behind the speakers at the rally. Josephine Smith was not alone in her fight to protect the park named for her grandfather.

Working with our partners is key to being effective. Our partners share the common goal that CSPRA strives

for : protecting the parks. From the frontline maintenance workers shoring up our aging facilities, to the park aids greeting the visitors, the lifeguards, dispatchers and rangers who protect public safety, to the interpreters who educate the public on our treasures, to the historians, archaeologists, curators, environmental scientists and others who focus on resource protection, to office folks like myself, we are all deeply concerned about the future of our parks. While we may not all be "rangers" in classification, to the public we all fit their definition of "rangers"—those who protect and share the parks.

And threats to those parks are everywhere, perhaps the worst in the last two decades. Funding limits and take-backs erode our deferred maintenance projects, ongoing operations, staffing levels, and salaries. These in turn have slowed acquisition of new parklands, despite land costs that will in the future continue to escalate and development that could take away these lands forever. And as California is increasingly built out, land-strapped local communities look to parklands for

roads, power, and economic development. Orange County governments are proposing a toll road through San Onofre State Beach. San Diego Gas and Electric wants to run a huge powerline through state wilderness in Anza-Borrego Desert SP.

Parks are not open spaces waiting to be converted to roads and utility corridors. Parks are to protect California's resources and provide recreation opportunities for all Californians.

If you agree, I ask you to support CSPRA and our mission. How? Drop me an email at [gail@cspira.com](mailto:gail@cspira.com) if you'd be willing to tell an Assembly Committee that CSPRA needs their assistance to protect the parks. Or that you'd be willing to stop by your local legislative office to pass on this message. Recruit a new member to CSPRA, so we can continue to carry out our lobbying efforts.

We must all step forward to defend the integrity of each park in order to protect the system. Which park will be next? Would you like a toll road through YOUR park?

## EXECUTIVE MANAGER'S REPORT



by **Allison Pedley**, *Executive Manager*

I'm pleased to say CSPRA has 19 new members, coming in from a diverse array of positions and locations throughout California.

**Robin Joy**, a Park Interpretive Specialist at Fort Ross State Historic Park became a CSPRA member and presenter at the Parks Conference in one fell swoop! New Supervising Ranger members include **Greg Hackett** from the Sierra District, **Maury Morningstar** from the North Coast Redwoods District, **David Price** from Orange Coast, and **Kevin Williams** from the Santa Cruz District. From the Sacramento area, new members include **Bill Salata**, a

Superintendent in the Public Safety Division, and **Kelly Long**, Assistant State Archaeologist. Also joining CSPRA is **Carl Dougherty**, a director of public safety from an outside agency. Welcome new members!

As if you hadn't heard enough about the "great time had by all" at the Parks Conference, let me just say that we had a great time at the Parks Conference! I of course enjoyed meeting both CSPRA and PRAC members in attendance, saying goodbye to beloved out-going Board members, and hello to the bright-eyed new.

**Scott** and I talk a lot about "park family" – how the friends we've made even in our relatively short time living and breathing state parks are like family to us. And I have to say, in many ways, the parks conference was also a wonderful opportunity for a family reunion. There was **Andy Urlie**, who was, I believe, the first park ranger I met upon moving to California. Andy introduced us to Burney Falls, a park so beautiful it made me realize why Scott wanted to

be a ranger. There was **Kim Baker**, our next door neighbor at Big Basin's Sky Meadow, who hung a baby-friendly seat on the meadow swing set shortly after our first daughter was born. We saw **Linda Rath**, our neighbor at Pfeiffer Big Sur, who was the first to welcome us to the Big Sur Coast, and later, was among the first to meet our second born daughter just home from the hospital. Also at the conference were former Big Sur neighbors **Rain Greenslate**, with her husband **Barry** and adorable son **Wyatt**. I remember Barry always took time to clear the endless supply of oak leaves from our driveway with his leaf blower! And I can't forget **Ron Brean**, now retired, but for the past decade has been a regular member of the fly fishing cult Scott joins, rain or shine, every September when the busy ranger season is over.

Co-workers, neighbors, friends...family. It was nice to see you all. For those of you contemplating next year's conference, please don't underestimate the joy and value of seeing old friends this conference provides, and bring your family!

---

## Financial Committee Update

by **Wendy Martin**, *CSPRA Treasurer*

The bulk of CSPRA's revenue comes from membership dues, and as a result of a considerable amount of retirements among our ranks (retirees usually remain CSPRA members, but they pay smaller dues than actives) coupled with a declining number of new memberships, revenue has been slowly decreasing over the past couple of years.

Without new memberships next year's expenditures would be projected to exceed revenue to the tune of about \$5,000. To counter this shortfall, the Board is launching a major recruitment campaign to bring in new members from all disciplines

throughout the Department. In the past month we have recruited two dozen new members! But we still have a ways to go.

Why not ask around to see if you know someone who could benefit from joining CSPRA? We provide excellent opportunities for professional development, networking, interview coaching, and training scholarships. Folks who are relatively new to the Department as well as "old hands" can enhance career opportunities while helping to protect the parks.

The Board is also combing through our expenses to make sure we run as tight a ship as possible. **We are asking members to let us know if they would prefer receiving an electronic version of the newsletter**

(email [allison@cspira.com](mailto:allison@cspira.com) if you fit this category). We are holding as many meetings as possible via conference call, and have reduced expense reimbursements for board members. We are actively seeking more advertisers for the newsletter (Know a vendor? Ask them if they'd like to reach several hundred parks professionals six times a year at very reasonable rates).

The Board is also forming a committee to focus on the organization's financial situation. We are examining new potential revenue sources. It is anticipated that the committee will meet via conference calls at least one time per month through the coming year. If you are interested in joining the CSPRA financial committee please contact [Wendy@cspira.com](mailto:Wendy@cspira.com).

## PARK ADVOCACY DAY 2007

**A huge “Thank you”** to all the CSPRA members and park supporters who came out for Park Advocacy Day on March 26, 2007 at the Capitol. Organized by the **California State Parks Foundation**, the annual event is co-sponsored by CSPRA and many other groups.

Scores of people took the day off—traveling from as far away as Borrego Springs—to come to the halls and

reception honoring politicians who had made a difference for parks.

If you’ve ever wondered what more you can do to protect parks, Park Advocacy Day is a great opportunity to let the decisionmakers (and funders) know what it is like on the ground in our parks. The meetings we hold on Park Advocacy Day pave the way for the battles we fight during

the entire legislative session. We are able to alert legislators who are friends of parks to the key needs and issues. And we can help persuade fence-sitters to take an active role in sustaining the parks. Our efforts also provide political support for those who wish to support us but are also hearing from other constituencies.

See you all at Park Advocacy Day 2008!



*<<Elizabeth Goldstein, president of the California State Parks Foundation, spoke at Park Advocacy Day.*



*Assemblyman Jared Huffman, D, 6th District, spoke about protecting parks from new roads*

offices of the legislature and put a face on the need for park protection. Assembly members, senators, and their staffs listened as small teams presented them with the most critical issues facing us all: the need for increased funding, reinstatement of promised deferred maintenance monies, and support for bills to ban roads through parks and dairies next to Colonel Allensworth State Historic Park. We explained why miles of electrical towers would be a bad idea to place in Anza-Borrego Desert State Park.

The day was kicked off with speech by **dues-paying CSPRA member Ruth Coleman**, who provided background information on issues facing the Department. A noontime press conference and rally featured inspiring speakers from Friends of Allensworth and users of San Onofre State Beach. And the day wrapped up with a celebratory



*Ruth Coleman, Gail Sevens, Angy Nowicki, Donna Pozzi, Nina Gordon, Margo Cowan, and Mark Michalski -- just a few of those who participated*

*The CSPRA Wave, May-June 2007* **13**

**PROMOTING PROFESSIONALISM IN  
CALIFORNIA STATE PARKS**

**Membership** Mail to: CSPRA,  
Allison Pedley, P.O. Box 10606,  
Truckee, CA 96162. Or join online  
at: [www.cspira.com/membership](http://www.cspira.com/membership)  
For all except "Active" or "Active  
retired" payroll deduction, please  
include check for 1 year's dues.

Name: \_\_\_\_\_

Address: \_\_\_\_\_

City State Zip

Job Classification \_\_\_\_\_

Social Security #: \_\_\_\_\_

Phone (Work) \_\_\_\_\_

Phone (Home) \_\_\_\_\_

Email: \_\_\_\_\_

District, Section, or Park: \_\_\_\_\_

**Membership type (Circle one):**

Active \$8/month

Active Retired \$36/year

Supporting \$36/year

Organization \$50/year

Benefactor \$1,000/life

Check one: I prefer getting the WAVE  
\_\_\_\_\_ as a PDF file by email;  
\_\_\_\_\_ by postal mail (hard copy).

May we print your name as a new  
member in the WAVE? \_\_\_\_\_

I hereby authorize the State Controller  
to deduct from my salary and transmit as  
designated an amount for membership  
dues in the California State Park  
Rangers Association. This authorization  
will remain in effect until cancelled by  
myself or by the organization. I certify I  
am a member of the above organization  
and understand that termination of my  
membership will cancel all deductions  
made under this organization.

Signature \_\_\_\_\_

Date \_\_\_\_\_

## LOBBYIST REPORT

by **Monica Miller**

The legislature is now in full swing. We have just come off of a very successful Advocacy Day thanks to your participation and the good work of the California State Parks Foundation. We have begun to go into intensive budget discussions.

Many of 2000 plus bills that were introduced have begun to take shape. Most were what we call "spot" bills, which means the legislator wants to introduce something in this area but had not fully refined their intent when the bill introduction deadline arrived. As such they introduced placeholder language which would allow them to amend the bill at a later date. This language is usually amended just before the committee hearing so the bill can receive a fair discussion. With the committee policy deadline looming, many legislators have scrambled to ensure that their bill reflects what the intent was when they introduced that bill.

Another interesting dynamic with the new legislative session is dealing with the full effect of term limits and the loss of a few legislators that were very committed to parks. However, we did gain a few that really understand our mission and want to continue to help us fight to keep our parks. One of those members in particular is Assembly Member **Jared Huffman** from San Rafael. He has worked passionately to protect our resources in California for a number of years and most recently was an

attorney for the Natural Resources Defense Fund. He introduced AB 1457 to protect State Parks from the threat of roads being built through our parks. As you are well aware, this is an on-going threat and we must stop this as an option. As California continues to grow and many continue to insist on not using public transportation, the roads are congested and the last viable land resource seems to be state parks. Some continue to believe that it is just easier to go through the middle of a park instead of working on a more creative solution. We will keep you posted on the outcome of this very important bill.

Another critical area is the California State Budget. The May Revision (which is the Governor's budget with his revisions based on the April tax receipts) will be released in a few weeks and we are concerned that there will be a continued effort to reduce funding for State Parks and supplant those dollars with the bonds that were passed in November of 2006. This causes us great concern since we are already cut so close to the bone on our budget and the intention of those bonds was to continue the great work that you are doing in your parks not paying for past work that was already allocated in the past state budgets.

There are many areas of interest that we need to keep ever vigilant about and remind the legislature of all the wonderful resources State Parks provide for California. We will continue to keep you updated as the year progresses and these discussions move forward.

***Want a CSPRA  
scholarship?***

**Go to [www.cspira.com](http://www.cspira.com)  
or email  
[scholarship@cspira.com](mailto:scholarship@cspira.com)**

**THIS CUP COULD BE  
YOURS!**

**All contributors  
to the WAVE  
receive a stainless  
steel CSPRA  
travel mug**



## humor in unicorn



## Mixed Metaphors and Malaprops

*by Jeff Price, retired*

Here is another batch of overheard slips of the tongue and misfires of the brain. Feel free to send along any overheard slips of the tongue - malaprops@cspra.com

Disconnected circuit reasoning.  
*Imus stepped over the third rail with that comment.*

Some of these are so twisted I can't explain!  
*If the terrorists attack us again on our soil we will have to develop a new plan and then throw all our plans in a hat and start a drawing board.*

Hello Charlie, someone else is doing your gig!  
*This Virginia Tech shooter is mentally deranged, just like Lee Harvey Oswald or Marilyn Manson.*

## GET CONNECTED

### CSPRA Online:

Catch up on activities, contact your District Reps., Board, or Officers at [www.cspra.com](http://www.cspra.com)

## District Reps

District	Name	Email Address
Angeles	Frank Padilla	fpadilla@parks.ca.gov
Capitol	Mark Hada	mhada@parks.ca.gov
Central Valley	Wayne Harrison	wharr@parks.ca.gov
	Greg Martin	gmart@parks.ca.gov
	Sean Malis	sean.malis@us.army.mil
Channel Coast	Tyson Butzke	tbutzke@parks.ca.gov
Colorado	Jeri Zemon	jzemon@parks.ca.gov
Diablo Vista	Carl Nielson	junctionrangers@earthlink.net
	Ann Meneguzzi	amene@parks.ca.gov
Gold Fields	Matt Cardinet	mcardinet@parks.ca.gov
	Kevin Pearce	kpearce@parks.ca.gov
Inland Empire	Sue Neary	sneary@parks.ca.gov
Monterey	Pat Clark Gray	pgray@parks.ca.gov
North Coast Redwoods	Rick Sermon	sermon@wave.net
	Jenny Donovan	roadkil151@aol.com
North Bay	Karen Broderick	karen@mcn.org
Northern Buttes	Val Nixon	nixons@mchsi.com
Orange	Robert Simoneaux	bob4q@cox.net
San Diego	Fred Jee	jeeology@yahoo.com
San Luis Obispo	Nick Franco	nfranco@hearstcastle.com
	Robert Latson	rllatson@aol.com
Santa Cruz	Charles Edgemon	charlesedgemon@earthlink.net
	Linda Hitchcock	lhitchcock@parks.ca.gov
Sierra	Susan Grove	susan@gbis.com
Administration	Jann Bullock	jbull@parks.ca.gov
OHV	John Pelonio	jpelonio@parks.ca.gov

Representatives are needed for:

Mendocino District, Grants, Historic Preservation, Northern Service Ctr, Southern Service Ctr, Interpretation Div., Cultural Resources Div., Natural Resources Div., Planning Div., and Tech Services Div.

## GRAYBEARS



*Attention retired members!*  
Want to keep in touch after you leave DPR? Join the GrayBears list server. It is FREE and EASY to use. Just send your name and email address to: [graybears@cspra.com](mailto:graybears@cspra.com)

## Do you know someone who is retiring?

CSPRA provides a plaque for each member when they retire. Contact us at (530) 550-1268, or email [allison@CSPRA.com](mailto:allison@CSPRA.com), or write to CSPRA, P.O. Box 10606, Truckee, CA 96162



California State Park Rangers Association  
P.O. Box 10606,  
Truckee, CA 96162  
[www.cspra.com](http://www.cspra.com)

PRESORTED  
STANDARD  
U.S. POSTAGE  
PAID  
PERMIT NO.  
163, PASO  
ROBLES, CA

## **CALIFORNIA STATE PARK RANGERS ASSOCIATION**

### **Mission Statement**



**The California State Park Rangers Association is an organization of park professionals dedicated to advancement of the highest principles of public service, and established to support, protect, and defend the integrity of State Parks for present and future generations.**



***Founded 1964***