



*The CSPRA*

# *Wave*

*Newsletter*

VOLUME 11, NUMBER 3

CALIFORNIA STATE PARK RANGERS ASSOCIATION

FALL 2011

*"...to support, protect, and defend the integrity of State Parks for present and future generations."*

## **OPENING DOORS**



SAVE THE DATE MARCH 5-9, 2012

CSPRA TRAINING (formerly CA PARKS CONFERENCE)

SHERATON HOTEL, AGOURA HILLS see page 7



## CSPRA OFFICERS

### PRESIDENT

**Nina Gordon**, Interpretation & Education  
Division

(916) 653-9377, [nina@cspira.com](mailto:nina@cspira.com)

### VICE PRESIDENT

**Don Schmidt**, Sierra District  
(530) 273-1310, [don@cspira.com](mailto:don@cspira.com)

### SECRETARY

**Karyn Lombard**, Training Section  
(916) 657-0412, [karyn@cspira.com](mailto:karyn@cspira.com)

### TREASURER

**Sara M. Skinner**, Mott Training Center  
(831) 649-2961, [sara@cspira.com](mailto:sara@cspira.com)

### DIRECTORS

**Lynn Rhodes**  
(831) 600-5209, [lynn@cspira.com](mailto:lynn@cspira.com)

**Pat Clark-Gray**, Monterey  
*Retirees' Rendezvous Chair*  
(831) 384-5119, [patricia@cspira.com](mailto:patricia@cspira.com)

**Chris Corey**, Archeology, History &  
Museums Division  
(831) 234-1595, [chris@cspira.com](mailto:chris@cspira.com)

**Mark Hada**, Sacramento  
Sutter's Fort SHP, CA State Indian Museum  
(530) 676-7317, [mark@cspira.com](mailto:mark@cspira.com)

### ADMINISTRATION

**Allison Pedley**, Executive Manager  
P.O. Box 10606, Truckee, CA 96162  
(530) 550-1268, (800) 749-8749  
[allison@cspira.com](mailto:allison@cspira.com)

### INTERNET COMMUNICATIONS

**Jeff Price**, Webmaster  
(805) 278-9201, [webmaster@cspira.com](mailto:webmaster@cspira.com)  
[www.cspira.com](http://www.cspira.com)

### *The CSPRA Wave*

**Janet Carle**, Editor  
(760) 647-6431, [wave@cspira.com](mailto:wave@cspira.com)

### *The CSPRA Wave*

(ISSN0087-9176)

is published by CSPRA, P.O. Box 10606,  
Truckee, CA 96162

Articles and letters are always welcome. All  
submissions become the property of CSPRA  
and may be edited without notice.

Cover photo: Mono Lake Interpreter by  
Janet Carle

## PRESIDENT'S MESSAGE



*by Nina Gordon, CSPRA President*

This current budget crisis has resulted in unprecedented hardships for staff. Whether your jurisdiction includes a park currently slated for closure or one planning for severe service reductions, the impact is devastating for many. And Headquarters is also facing large cuts. The resiliency, dedication and passion that prevails among employees is awe inspiring.

The "unprecedented" piece is a critical component. There are many questions to address: How DO you close a park- what happens to the cultural resources? How do you protect the natural resources? How do we prioritize the most critical infrastructure and on-going (and deferred) maintenance needs? What is the level of service we should require of any partners assisting with park operations and maintenance? What will happen to the jobs in those areas that are closed? When can we hire staff?

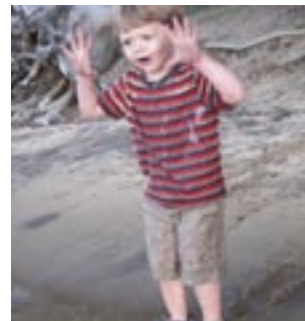
On August 22, I and some other members of the CSPRA Board (**Sara Skinner, Chris Corey and Mark Hada**) met with **Director Coleman** to voice some concerns on behalf of CSPRA. We stated that our members were not receiving adequate information from the Director's office. Our members want to know what is being discussed and planned, time frames and any other parameters that can be made public. We need to hear directly from the leadership, and be

kept in the loop regarding policy and direction in developing the closure plan and addressing staffing and other budget impacts.

Director Coleman agreed that more information and communication was needed and committed to providing it on a regular basis. The resulting "all employee memo", sent four days after the discussion, referenced our meeting. We also discussed the time frame for lifting the hiring freeze. The Director stated that keeping the park mission in the forefront and adhering to the General Plans is critical but that we also need to recognize the unique qualities of each unit. She stated that there were a number of questions that needed to be addressed including liability issues, required level of service and other parameters for outside operators. We stated it was imperative that natural and cultural resources be protected including compliance with federal and state laws. I have committed to conducting a minimum of quarterly meetings with the Director (along with other Board members). Let me know about any issues that you would like to have discussed ([nina@cspira.com](mailto:nina@cspira.com)).

We are featuring some of the efforts around the state to support State Parks. Current and retired employees and other concerned citizens are stepping up. We take inspiration from these movements and will continue to support and highlight our membership. Take advantage of the opportunities for CSPRA members outlined in this newsletter and our website, [www.cspira.com](http://www.cspira.com).  
**Thank you for inspiring the next generation of park supporters...**

*Kathy  
Schultz's  
son,  
Zachary*



## SONOMA PARKS ALLIANCE

The Parks Alliance for Sonoma County was formed in response to the threatened closures of five State Parks in Sonoma County: Annadel SP, Jack London SHP, Sugarloaf Ridge SP, Petaluma Adobe SHP, and Austin Creek SRA. The Directors of Sonoma County Regional Parks, the Sonoma County Agricultural Preservation and Open Space District, and the non-profit Sonoma Land Trust initiated the formation of the Parks Alliance for Sonoma County as a forum for all of the public agencies, non-profit groups, and individuals concerned about the threatened closures to come together, coordinate their actions, and try to keep the State Parks open. The Parks Alliance is also interested in helping the parks' operations with volunteers, new funding, and new operational ideas.

A main goal of the Parks Alliance is to work toward sustainable funding to maintain a thriving system of parks throughout Sonoma County. The Sonoma Land Trust retained **Dave Gould**, a retired District Superintendent from Sonoma (and long standing CSPRA member), and **Lauren Dixon**, a policy analyst from Sebastopol, to staff the Parks Alliance. Sonoma County Regional Parks, under the leadership of **Caryl Hart** (yes, the Chair of the State Park Commission too), has provided office space for the Parks Alliance. Initial members of the Parks Alliance include the Valley of the Moon Natural History Association, the Sonoma County Trails Council, LandPaths, the Sonoma Ecology Center, Stewards of the Coast and Redwoods, and others.

As a career State Parks employee, Dave has found himself back in the thick of dealing with park issues after thinking he was retired. "I just wanted to hike and enjoy the parks I've spent my career working in but I think I failed retirement. I'm back



<< *Austin Creek SRA*

photo by  
Jane Huber

attending meetings and working in front of a computer – dang!" But as he has said, what parks offer is really a part of all of us – our cultural past, our wonder of nature, our sense of adventure, our desire to have fun! "Being forced into the idea of closing any State Park is just so sad. So many people, over the course of history in California, have worked so hard to provide these park resources for all of us to enjoy. Right now, closing them is not an option for the people of Sonoma County. They are very supportive of the efforts of the Parks Alliance and they are a driving force of what keeps us pursuing this effort to keep the parks open."

Lauren has been very adept at administering the work of the Parks Alliance. With a Masters in Public Policy from UC Berkeley, she is planning a media blitz, preparing for fundraising, planning park events, and looking for other opportunities to engage the citizens of Sonoma County in the efforts. "I have always enjoyed using parks – they have been and continue to be very much a part of my life. I just never thought I would be

learning about what it takes to run a park and dealing with trying to keep them open" said Lauren. She has also been responsible for getting the word out through the social media. Check out [www.parksalliance.com](http://www.parksalliance.com) or find the Parks Alliance on Facebook for the latest.

The past model of how State Parks were funded and operated seems to be crumbling. It is clear that a new vision needs to be created to take the funding and operation of our cherished parklands into the future in an attempt to retain a link to our past. And hopefully the Parks Alliance for Sonoma County will be able to help do just that.



*Petaluma Adobe SHP* photo by Sara M. Skinner



## MONO LAKE PARTNERS

by **Janet Carle**  
*Retired State Park Ranger*

The Mono Basin is a big, complicated place. Working as a Ranger at the Mono Lake Tufa State Natural Reserve for over 20 years, it was often challenging dealing with so many agencies, entities and private citizens that had a stake in what was going on. I am now realizing just how important all those partnerships can be in these difficult times. The park is on the closure list of 70 parks slated to be shut down next year.

The Mono Lake operation is small and lean. It consists of one full-time ranger ( who has been working mostly at Bodie lately) one part-time Interpretive Specialist (funded mostly by the Bodie Foundation) and occasional help from Bodie and the Sierra District with big projects or unusual maintenance needs. The annual budget is \$86,000 per year. The park is quite large in area -- 17,000 acres of lake shore, plus 60 square miles of lake surface. Visitation is 270,000 per year. The landscape is world class and is a hub of research and science. It has been frustrating to continually land on closure lists over the years, mainly because of minimal staff and revenue generation.

State Parks is not alone at Mono Lake. In 1984, the US Forest Service took over Bureau of Land Management lands to create the Mono Basin National Forest Scenic Area, which encompasses thousands of acres around the lake, including the major visitor site at South Tufa. Their cooperating association is the Eastern Sierra Interpretive Association (ESIA), which runs book stores in the Forest Service visitor centers. The Mono Lake Committee is a well-known non-profit group that successfully challenged Los Angeles on its water diversions from the Mono Basin, resulting in an agreement to

**4** CSPRA *Wave*, Fall 2011



*State Natural Reserve and Mono Lake Committee staff met with Assemblywoman Kristin Olsen at Mono Lake*

share water with Mono Lake in 1994. The Bodie Foundation and Friends of Mono Lake Reserve (and previously the Sierra State Parks Foundation) have provided funding for staff and projects for years as a state parks cooperating association. The Mono Lake Volunteer Program is funded by all three of the non-profit groups, and has successfully recruited over 50 volunteers to share their expertise with visitors and freely choose to work at sites run by State Parks, the Forest Service and the Mono Lake Committee Information Center. There is a long-term Interpretive Agreement at Mono Lake between the Forest Service, State Parks and the Mono Lake Committee. Each partner covers one of the three daily tours at South Tufa offered in the summer.

This year was challenging for all of us. The state park was on the closure list. The Forest Service had to cut several seasonal positions in the middle of July when they finally got their budget update. The handwriting is on the wall--- the business model is changing, and state and federal funds are not dependable and predictable as we move into the future.

A partners meeting was held in July to share ideas and possible funding scenarios. With the likely passage of AB 42, allowing non-profit groups to run some park operations, the

possibility arises of changing the fee collection systems. For example, it is a 2 year process for the Forest Service to raise the \$3 per person fee at South Tufa, but a non-profit group, such as ESIA, could raise the fee and keep more of the money in the Mono Basin.

"There are certain things that non-profit groups could certainly help with, such as fee collection and interpretation", said **Geoff McQuilkin**, Executive Director of the Mono Lake Committee. "But State Parks and the Forest Service have things only they can do in resource management, law enforcement, research and concession permits and overall responsibility. I hope we can work together to keep the park open and find new funding sources, but also keep State Park oversight and long-term management alive".

We are all hoping that an alternative to closing the State Reserve can be found. Mono Lake tourism is an important part of the local economy. The Reserve is a standout among state parks as a low-cost, high-value park unit, thanks in large part to these creative cost-saving partnerships that have been fostered over the years. Hopefully, we will find a way, working together, to continue the high quality visitor experience in the Mono Basin.

*Dave Gould is highlighting a different CSPRA member for each edition of the WAVE. In his many years working for State Parks and being a longtime member of CSPRA, Dave has found that the personal and professional lives of CSPRA members are quite varied and fascinating. This issue highlights Nick Franco of San Luis Obispo Coast District. Enjoy!*

## **CSPRA Chronicles... NICK FRANCO**

**Where do you currently work, what is your job classification, and how long have you worked for California State Parks?**

I am the District Superintendent of the San Luis Obispo Coast District and I've been with California State Parks for 28 years with the last 8 in the SLO Coast District.

**Where were you born and where did you grow up?**

I was born and grew up in Carpinteria, California. My parents still live in the same house I grew up in.

**Tell us a little about your youth, the "formative" years.**

I was mostly feral as a child, spending most of my days running around Carpinteria and hanging out at the State Beach, hiking through the hills (probably trespassing now that I look back) and mountain biking down steep hillsides causing lots of erosion and damage and probably scaring the heck out of a lot of hikers.

**Did you visit any parks while you were growing up? Do you have any park-related stories from your youth you would like to share?**

We visited a number of parks growing up (not counting Carpinteria SB where I was almost daily). We camped frequently on weekends at El Capitan SB. The story my family loves to tell is when I was five and "lost" at Yosemite. We were camping in the Valley with my grandparents and uncle and had been enjoying the day and visiting Yosemite Falls. When it came time to return to camp, I didn't want to go – I wanted to stay at the falls. My parents made me come back with the group and I didn't say a word coming back. At camp, when dinner was ready, everyone realized they couldn't find me. They looked all through the campground, down trails, in the



*The Franco Family: Nick, Caroline, and daughters Julia and Camille*

Merced River and started to panic and were just about to go to the Ranger to get help when I came strolling back into camp. I wanted to go to the waterfall, so doggone it; I went to the waterfall and came back when I was good and ready. They were so relieved to see me that I didn't get in trouble.

**Tell us a little about your family.**

I met my wife, Caroline, while working at Will Rogers SHP – she was giving tours and I was at my first assignment as a Ranger. Caroline's family history includes being the great-granddaughter of one of the founders of the Yosemite Park and Curry Company (there's a great picture of her great-grandfather sitting next to Steven Mather at the founding of the Ahwahnee Hotel). We were married in Yosemite in 1991 and now have two daughters, Julia (17) and Camille (14). They are both great students and run cross country and track at Atascadero High School and are into Japanese pop-music and taking care of our many chickens and cats.

**What is your educational background?**

After graduating from Carpinteria High School, I went to Santa Barbara City College to work towards a geophysics degree. I've been playing classical guitar since about 8th grade and after finishing my general education, I switched my major to music and spent two years studying with a local

classical guitarist while working on a music degree. I then transferred to UCSB and changed majors again to philosophy. During my UCSB time, I was notified that I'd be going to BVST #7 in Feb 1988, so I left school and went to the academy. When I was a Ranger at Pismo Dunes (now Oceano Dunes), I returned to school at Cal Poly, SLO to finish a degree in Public Administration.

**Did your "learn by doing" education at Cal Poly help you with your career?**

Because I returned to school to finish my degree while a Ranger, I think I benefited from being able to see direct application of my education with my career. I was able to do work for classes that directly correlated to work I was doing at Pismo Dunes including work with volunteers and in dealing with work and family issues since that's also the time when my first daughter was born.

**What are your hobbies and what do you like to do when you are off of work?**

I love running and try to get in as many miles as I can. I'm not as fast as my 17 year old, but I can still keep up with my 14 year old. I still play classical guitar and have been experimenting with flamenco recently. I really enjoy camping and our family takes a multi-week camping trip at the end of every school year. That's one of the highlights of my year.

**You built your family home with your own two hands. Tell us a bit about that experience.**

Exciting, challenging, educational, tiring, frustrating and ultimately very satisfying. The whole family gained a lot from the experience including teaching both daughters how to use

*See CHRONICLES, page 6*

## NICK FRANCO

### CHRONICLES, from page 5

power tools. The kids lived in a tent in the backyard one summer and absolutely loved it and didn't want to come inside when their room was finished. We were able to do things that we wanted such as a climbing wall for the cats to access the upstairs without taking the stairs. They have what appears to be a giant scratching post that they can climb all the way up.

#### **What were the jobs you held before joining California State Parks?**

My first job was with a friend of mine during the summer between 8th and 9th grade. We took care of the petting zoo animals at the Santa Barbara Zoo including holding down the goats for medical procedures, preparing food, rounding up animals that were wandering the zoo and selling petting zoo animal food to the public. Through high school I worked in restaurants as a bus boy and in an ice cream parlor.

#### **When did you get the idea that you would like to work for California State Parks?**

My older brother worked as a park aid at Carpinteria State Beach during a season before going to graduate school. I was a senior in high school when he left and he suggested to then Supervising Ranger **Wes Chapin** that he hire me. Getting paid to go to the beach I went to anyways...I thought that was great! Wes interviewed me and hired me as a park aid in 1983. As I interacted with the employees at the park, I gradually realized that this would be a great thing to do. I loved the people who worked in the parks.

#### **What are the positions you have held and where have you worked in your SP career?**

I was a park aid at Carpinteria State Beach and, after I graduated from the academy in 1988, went to Will Rogers SHP, then Topanga SP. I transferred to Pismo Dunes SVRA (now Oceano)

in 1991 and stayed there for four years before moving to Big Basin Redwoods. I was promoted to a Supervising Ranger at San Juan Bautista and Fremont Peak State Parks and then to a Sector Superintendent on Angel Island in 1998. In 2003, I came to SLO Coast District as the Superintendent.

#### **You manage a pretty incredible State Park that is known all around the world. Tell us a little about what it is like to be responsible as the District Superintendent for Hearst San Simeon SHP?**

Fabulous and awesome and overwhelming. It's impossible for me to even think about without thinking of the tremendous work done by Museum Director **Hoyt Fields**. While I manage the District, Hoyt is what makes the Castle the incredible resource that it is. I can't picture the Castle without Hoyt. Most people know the incredible history, the tourism draw of the site, the spectacular setting, the architecture of Julia Morgan, but what keeps astounding me is the amazing collection of art throughout the castle. While European museums boast of having one 16th century ceiling, the castle has many. While the Louvre displays a Canova sculpture on it's brochure, the castle has Canova sculptures. And there are thousands of pieces of art! It's really overwhelming.

#### **Tell us about some of the interesting people you deal with in regards to Hearst Castle?**

Every day is interesting at the castle... Legislators, the Governor's office, the rich and famous who want private tours, the nutty folks who show up claiming to be entitled to some element of the fortune and so on and so on. It is a wonderful representation of the type of resources within the California State Park System and we impress that upon each and every

VIP who visits the castle.

#### **How long have you been a member of CSPRA and what inspired you to join?**

I really don't remember when I joined....I know I was a member when I was in the academy (1988), but I may have even joined earlier when I was a park aid – it's been a while. I remember hearing from others how important it was to have a group of people who can advocate for what needs to be done outside of what we can advocate for within our job assignments. I think CSPRA is a great voice for the profession.

#### **If you could make a change (or changes) in California State Parks, what would it (they) be?**

I think we've slowly been drifting away from what has made us strongest through the years: our focus and commitment to our mission. The one change I would make is to have a top to bottom, throughout all segments of the department, re-commitment to our mission. When faced with the current difficult challenges we have such as budget shortfalls, prioritization of funding, park closures, corporate sponsorship, and other pressures, our decision making process should be fundamentally based upon achieving our mission. Everything else is secondary to that.

#### **What is a message you would like to share with CSPRA members?**

Stay committed to the values and principles of our mission and let's all support each other in these difficult times for parks.





# Free Training at Your Fingertips

by **Karyn Lombard**  
Training Section, HQ

The Department of Personnel Administration, in partnership with State departments and agencies, has launched the new State of California Virtual Training Center located at:

<http://www.dpa.ca.gov/training/virtual-training-center/main.htm>

The Virtual Training Center has been developed to share resources and maximize existing technology and talent statewide. This convenient, free training is conducted through live, interactive webinars and is available to all State employees. These courses have been designed and shared by State training officers and other professionals. Topics vary from month

to month, and we encourage you to check the site often to see what is available to assist in your professional development.

We extend our thanks to the CalPERS Training Office for sharing their Virtual Training Center announcement with us, which we have modified to meet our needs.



## 2012 Parks Training in the Santa Monica Mountains

by **Mark Hada, CSPRA Board**

The California State Park Rangers Association (CSPRA) and the Park Rangers Association of California (PRAC) are partnering with the State Parks Training Program to sponsor a 2012 California Parks Training event (a change in focus for our annual conference). This event which includes training, interpretive, park operations and educational opportunities will be officially supported by California State Parks and will supplement state parks training opportunities. The week-long event is POST certified and will include Department sponsored interpretive, resource management, maintenance and park management. It will be held near the Santa Monica Mountains in Agoura Hills, March 5-9, 2012. Training sessions will be held March 6-8. Additionally, there will be recreational opportunities after hours as well as interpretive outings scheduled on Monday, March 5 and Friday, March 9. Events will include an evening tour of the Hollywood Hills, a trip to the Channel



Islands and wine tasting in an historic vineyard.

I also want suggestions from the field for training topics. Please include public safety and non-public safety training, subject areas and suggested instructors. This will be an opportunity to meet annual CPT requirements and network with fellow park professionals.

If you and/or your staff or colleagues are interested in instructing a course, please send an instructor resume and an outline of the course including the number of hours of the training and any special requirements. Send the information to **Mark Hada**

at [mhada@parks.ca.gov](mailto:mhada@parks.ca.gov) or call at (916) 475-8138.

A variety of professional tracks for this event will be held in order to make this event worthwhile to all parks personnel and their families.

The CSPRA Leads for the various tracks of classes are:

Public Safety: **Mark Hada**

Interpretation: **Sara M. Skinner**

Park Management: **Nina Gordon**

Resources: **Chris Corey**

Transitions (formerly Gray Bears):

**Jeff Price**

Trails: **Chuck Combs/Karl**

**Knapp**

Please see the CSPRA event webpage for more information as the Training Event develops. <http://www.cspra.com/pages/training/index.html>

Mark Your Calendars!!! Please let your co-workers know about this opportunity and encourage all State Parks employees to attend this certified training event.

# New Service: CafePress Website

by **Patricia Clark-Gray**  
CSPRA Board

CSPRA now has a CafePress website to order items with a variety of logos. The logo that has been used for the Retirees' Rendezvous is now available in two versions. One version has the wording "Retirees' Rendezvous" and the second version has the wording "Retired DPR". The bear with a golf club and fishing pole design was originally designed by **John Fehling** for the Retirees' Rendezvous. But, in order to use the design for the CafePress website we needed a higher resolution version. My friend **Kathy Addington** took the design that **Jeff Price** provided and colored it and added the new wording.

In addition, for the newly retired retirees, we have a new logo that was designed for free by **Gay Kraeger**



from Wildways Illustrated. I felt the new logo should reflect what the new retirees are doing and kayaking seemed to be something my retired park friends loved to do. So I asked Gay to come up with a design with the bear kayaking. She did a great job with the design, colors and font. The new logo also reflects our change from DPR to California State Parks.

If you would like to order a t-shirt,

water bottle, coffee mug, hat, canvas bag and other items go to [www.cafepress.com/cspr](http://www.cafepress.com/cspr) to place your order. Thanks to **Sara M. Skinner**, Board member, for setting up this site. CSPRA will make some money from website sales, so we hope you place some orders and help advertise State Parks and CSPRA.

## Have You Liked Us on Facebook?

by **Sara M. Skinner**, CSPRA Board

[www.facebook.com/CSPRA](http://www.facebook.com/CSPRA)

CSPRA has increased our presence on Facebook with five to seven posts per week. We post information that affects our members and updates about our most current actions. Facebook is one of the top five Web sites and allows us to connect with an existing audience of organizations that have similar interests. Since June we have seen our fans increase from 151 to the current 339. We have many followers who have liked our page that are not members of our organization. They are people that care about California State Parks and more importantly, our employees.

Our Webmaster, **Jeff Price**, has added a Facebook social plug-in to the home page of our website [www.cspr.com](http://www.cspr.com) so our updates are in two places. We have implemented our Tuesday Tribute where we acknowledge one of the parks on the closure list and the Thursday Tip which offers



good websites to check out, events to attend, and other information that is pertinent. Our post with the most hits was one from early in the summer: "Why do California State Park Rangers, Lifeguards, and Interpreters wear the Stetson?"

Past posts have included:

**2011-09-08-Thursday Tip:** Thanking an Honorary Ranger. If you know any of the folks on this list, please contact them and thank them for their devotion to California State Parks and our staff.

**2011-09-06-Tuesday Tribute:** Now that Labor Day is over, every Tuesday we will be posting about a park that is on the California State Parks closure

list. This is your opportunity to take time to contact the park staff and find out how you can help keep the park open. Today's park is Anderson Marsh State Historic Park.

2011-07-25-Our staff is working hard out in the field this summer. If you visited California State Parks this weekend, where did you go?

Our goal is to reach 500 fans by the end of the year. Please "Like" us on Facebook to find out what CSPRA is doing for you. If you have suggestions of photos and/or posts please send them [sara@cspra.com](mailto:sara@cspra.com).



## EXECUTIVE MANAGER



by **Allison Pedley**, Executive Manager

It's been another long, rough summer for everyone. In fact, it's been a rough few years for parks and their employees. Furloughs were bad enough, but now we're looking at some of our favorite parks being closed, and a very uncertain future. I'm continuously amazed by how, although frustrated and unsure many of you must be, the passion for parks remains, and I consider myself proud to be associated with a group so dedicated to the cause of parks.

Two new members have joined our ranks recently – **LuAnn Thompson** out of Anza-Borrego, and **Alaina Boys** from Santa Cruz. Welcome to CSPRA Alaina and LuAnn!

Finally, a huge thanks to those retired members who have sent in their annual dues (as well, to those who pay their dues monthly out of their PERS checks!). We value your memberships tremendously, and welcome your input any time. Thanks everyone!

**Your email address will save money and paper and help us stay in touch. Please send to [Allison@CSPRA.com](mailto:Allison@CSPRA.com).**

### CSPRA Income & Expenses July 2010 through June 2011

		Jul '10 - Jun 11	Budgeted
<b>Income</b>			
Over/Under			
\$(336.00)	PERS	\$3,164.00	\$3,500.00
\$(4,839.00)	SCO	\$34,411.00	\$39,250.00
\$(1,880.00)	Donations	\$3,120.00	\$5,000.00
\$124.27	Rendezvous	\$1,124.27	\$1,000.00
\$558.00	Retiree Dues	\$1,408.00	\$850.00
\$(180.00)	Sales	\$70.00	\$250.00
\$150.00	Conference Income	\$150.00	\$-
\$(6,402.73)	<b>Total Income</b>	<b>\$43,447.27</b>	<b>\$49,850.00</b>
<b>Expenses</b>			
\$(675.41)	Recruitment	\$1,675.41	\$1,000.00
\$-	Contractor Fees/Payroll	\$14,400.00	\$14,400.00
\$37.00	Fees & Taxes	\$1,663.00	\$1,700.00
\$1,875.91	Officer/Board Meetings	\$124.09	\$2,000.00
\$1,240.35	Conference Attendance	\$4,259.65	\$5,500.00
\$(876.54)	Insurance	\$3,876.54	\$3,000.00
\$(200.26)	Office Expenses	\$400.26	\$200.00
\$(626.97)	Telephone	\$1,226.97	\$600.00
\$(240.10)	Postage	\$740.10	\$500.00
\$(49.16)	Printing	\$199.16	\$150.00
\$(27.62)	Bank Charges	\$77.62	\$50.00
\$(245.03)	Dues Collection	\$1,545.03	\$1,300.00
\$(337.13)	Administrative Expenses - Other	\$337.13	\$-
\$(1,893.42)	CPC Expenses	\$1,893.42	\$-
\$(727.57)	Awards/Recognition	\$1,927.57	\$1,200.00
\$3,300.00	Bill Lane Morale Funds	\$1,700.00	\$5,000.00
\$300.00	Mott Training Award	\$100.00	\$400.00
\$3,183.30	Newsletter	\$4,316.70	\$7,500.00
\$(26.94)	Conference Planning	\$276.94	\$250.00
\$279.00	Retiree Rendezvous	\$721.00	\$1,000.00
\$1,650.00	Scholarships	\$1,350.00	\$3,000.00
\$5,939.41	<b>Total Expense</b>	<b>\$42,810.59</b>	<b>\$48,750.00</b>
	<b>Net Income</b>	<b>\$636.68</b>	

### Helping to Open Doors

by **Nina Gordon**, CSPRA President

The web of actions to keep State Parks open is growing stronger. Below are some ongoing movements and efforts that are admirable and worth our support.

**Folk4Parks**, <http://folk4parks.org> is focusing primarily on keeping State Parks open through advocacy, awareness and fundraising. It features a webcast and text of an emotional and very articulate presentation by

the founder. I encourage everyone to listen to it. The website features incredible and very moving photos and they are developing beautiful posters for sale of some of the state parks on the closure list.

**Alden Olmstead**, son of the late John Olmsted who helped create several State Parks is placing "Save Our State Parks" donation buckets throughout the state asking for a donation to keep parks open. The buckets feature the face of his father. Olmsted says he's visited about 40 parks on the clo-

sure list so far, collected over \$20,000 and has put two thousand miles on his car: [www.johnolmsted.net](http://www.johnolmsted.net)

The **California State Parks Foundation** has undertaken a very effective strategy to collect and tell personal park stories. "The Magnificent 70" celebrates and highlights the state parks on the closure list, "a reminder of what will be lost if they are shuttered." Continue to check out their website: [www.calparks.org](http://www.calparks.org)

PROMOTING PROFESSIONALISM IN  
CALIFORNIA STATE PARKS

**Membership Mail to:** CSPRA,  
Allison Pedley, P.O. Box 10606,  
Truckee, CA 96162. Or join online  
at: <http://www.cspra.com>  
For all except "Active" or "Active  
retired" payroll deduction, please  
include check for 1 year's dues.

Name: \_\_\_\_\_

Address: \_\_\_\_\_

City \_\_\_\_\_ State \_\_\_\_\_ Zip \_\_\_\_\_

Job Classification \_\_\_\_\_

Social Security #: \_\_\_\_\_

Phone (Work) \_\_\_\_\_

Phone (Home) \_\_\_\_\_

Email: \_\_\_\_\_

District, Section, or Park: \_\_\_\_\_

Membership type (Circle one):

Active \$8/month

Active Retired \$36/year

Supporting \$36/year

Organization \$50/year

Benefactor \$1,000/life

Check one: I prefer getting the WAVE  
\_\_\_\_\_ as a PDF file by email;  
\_\_\_\_\_ by postal mail (hard copy)

May we print your name as a new member in  
the WAVE? \_\_\_\_\_ I hereby authorize  
the State Controller to deduct from my salary  
and transmit as designated an amount for  
membership dues in the California State Park  
Rangers Association. This authorization will  
remain in effect until cancelled by myself or  
by the organization. I certify I am a member  
of the above organization and understand that  
termination of my membership will cancel all  
deductions made under this organization.

Signature \_\_\_\_\_

Date \_\_\_\_\_

## Lobbyist's Report

by **Monica Miller**, CSPRA Lobbyist

As of September 10, 2011, the legislature broke for the fall interim. They are expected to return to the Capitol for official business on January 4, 2012. Since it will be the second year of the two-year session, it should be very busy with a flurry of bills trying to meet the late January deadline to ensure they continue to stay alive.

In addition to those two-year bills (meaning they were introduced in 2011 however they are "parked" for the remainder of the year for a variety of different reasons) the legislature will also be under the 2012 deadlines, specifically, the legislative counsel submittal deadline and the bill introduction period at the end of February. Additionally, we anticipate that it will be another bad budget year which will require lengthy hearings yet again. Since the Capitol tends to be very deadline driven, 2012 should be a very busy year.

Now, looking at the 2011 legislative accomplishments, there are some good things to report, given all of the bad news parks faced this year. Specifically, AB 42 (Huffman), which is supported by CSPRA, has moved to the Governor's desk for his action.

**AB 42 (Huffman)** allows for creative opportunities for public/private partnerships to be explored and encouraged in order to minimize the impacts to state parks and, where possible, maintain public access to park resources. Public/private partnerships are one tool which may help the state to keep a few of the parks open that would otherwise be subject to closure. Currently, there are 86 non-profit cooperating associations that provide varying levels of support for individual state park units. Cooperating associations are non-profit charitable 501 (c) 3 organizations dedicated to enhancing educational and interpretive programs in California State Parks. The associations assist with educational activities, provide trained docents for field trips, raise funds, and volunteer in a variety of

other ways to support the operation of state parks. If AB 42 is signed it would allow some qualified non-profit organizations to potentially provide greater assistance to DPR with park operations, authorizing DPR to enter into negotiated agreements with non-profits. Such agreements could enable DPR to keep open a park that would otherwise be subject to closure. The non-profit must work with DPR and the park superintendent to ensure proper management. All funds realized from this relationship would stay within that park. This bill has received bi-partisan support and is currently on the Governor's desk.

Another bill that is supported by CSPRA is **SB 580 (Wolk)**, which is parked for the remainder of this year. We hope that it will move in January when the legislature returns. SB 580 furthers the mission of The Public Park Preservation Act, commencing with Section 5400 of the Public Resources Code, which prohibits a public entity from acquiring any park for non-park purposes unless there is sufficient compensation or replacement parkland given in exchange.

While CSPRA does not have a formal position on these next bills, they are of interest. **AB 1077 (Carter)** requires the State Parks and Recreation Commission (SPRC) to hold a public hearing on any proposed development project that may substantially impact Colonel Allensworth State Historic Park and for the SPRC's conclusions to be transmitted to the appropriate local government entities. This bill is sitting on the Governor's desk awaiting his action.

Another bill of interest is **SB 386 (Harman)** requiring the Department of Parks and Recreation to post specified information on its website prior to closing a state park. This bill is also sitting on the Governor's desk awaiting his signature.

We will keep you posted on these measures once the Governor acts. Keep in mind that the Governor has until October 9, 2011 to take any action, otherwise the bill becomes law.

## humor in unicorn



### Mixed Metaphors and Malaprops *by Jeff Price, retired*

Here is another mixed up batch of overheard slips of the tongue and misfires of the brain. Sometimes people get so excited they mix comparisons and come up with some very funny concoctions. Feel free to send along any you hear - [malaprops@cspira.com](mailto:malaprops@cspira.com)

#### Cells bound for a zygote?

... and your photos will serve to represent the gamete of responsibilities and rewards our jobs offer.

#### ... the magic dragon maybe?

We agree to provide layout, editing, and poof reading.

#### ... and wait until the formative ones.

He was still in his formable years, so had time to learn better.

**Find Us On Facebook**  
[www.facebook.com/CSPRA](http://www.facebook.com/CSPRA)

## District/Program Representatives

District	Name	Email Address
LEES	John Pelonio	<a href="mailto:jpelonio@parks.ca.gov">jpelonio@parks.ca.gov</a>
Capital	Rick Becton	<a href="mailto:rbecton@parks.ca.gov">rbecton@parks.ca.gov</a>
Channel Coast	Tyson Butzke	<a href="mailto:tbutzke@parks.ca.gov">tbutzke@parks.ca.gov</a>
Colorado Desert	Gail Sevens	<a href="mailto:gsevr@parks.ca.gov">gsevr@parks.ca.gov</a>
Diablo Vista	Carl Nielson	<a href="mailto:cnielson@parks.ca.gov">cnielson@parks.ca.gov</a>
	Ann Meneguzzi	<a href="mailto:amene@parks.ca.gov">amene@parks.ca.gov</a>
Grants & Local Services	Ruth Bergener	<a href="mailto:ruth.bergener@gmail.com">ruth.bergener@gmail.com</a>
Inland Empire	Sue Neary	<a href="mailto:sneary@parks.ca.gov">sneary@parks.ca.gov</a>
Marin	Cecilia Rejas	<a href="mailto:crejas@parks.ca.gov">crejas@parks.ca.gov</a>
Mendocino	Tracy Weisberg	<a href="mailto:tweisberg@parks.ca.gov">twisberg@parks.ca.gov</a>
Monterey	Dana Jones	<a href="mailto:danajones@parks.ca.gov">danajones@parks.ca.gov</a>
Mott Training Center	Sara M. Skinner	<a href="mailto:sskinner@parks.ca.gov">sskinner@parks.ca.gov</a>
Northern Buttes	Lori Martin	<a href="mailto:lmartin@parks.ca.gov">lmartin@parks.ca.gov</a>
Oceano Dunes	Brent Marshall	<a href="mailto:bmarshall@parks.ca.gov">bmarshall@parks.ca.gov</a>
Orange Coast	Blythe Liles	<a href="mailto:bliles@parks.ca.gov">bliles@parks.ca.gov</a>
Russian River	Jenny Donovan	<a href="mailto:jdonovan@parks.ca.gov">jdonovan@parks.ca.gov</a>
San Luis Obispo	Nick Franco	<a href="mailto:nfranco@hearstcastle.com">nfranco@hearstcastle.com</a>
Santa Cruz	Charles Edgemon	<a href="mailto:charlesedgemon@earthlink.net">charlesedgemon@earthlink.net</a>
	Linda Hitchcock	<a href="mailto:lhitchcock@parks.ca.gov">lhitchcock@parks.ca.gov</a>
Sierra	Susan Grove	<a href="mailto:susan@gbis.com">susan@gbis.com</a>
Tehachapi	Sean Malis	<a href="mailto:sean.malis@us.army.mil">sean.malis@us.army.mil</a>
Hollister/Hungry Valley	Jeff Gaffney	<a href="mailto:jgaffney@parks.ca.gov">jgaffney@parks.ca.gov</a>
HQ	Mark Hada	<a href="mailto:mhada@parks.ca.gov">mhada@parks.ca.gov</a>
COM Centers	Cris Sanguino	<a href="mailto:cksanguino@parks.ca.gov">cksanguino@parks.ca.gov</a>
Representatives are needed for: Angeles, Central Valley, Gold Fields, North Coast Redwoods & San Diego Coast Districts, Historic Preservation, Northern Service Ctr., Southern Service Ctr., Interpretation /Ed. Div., AHM Div., Natural Resources Div., Planning Div., and Facilities Mgt. Div.		

## GrayBears



*Attention retired members!*

Want to keep in touch after you leave DPR? Join the GrayBears email ListServ. It is FREE and EASY to use. Email [graybears@cspira.com](mailto:graybears@cspira.com)

**Do you know someone who is retiring?** CSPRA provides plaques when members retire. Contact Allison: (530)550-1268; [allison@CSPRA.com](mailto:allison@CSPRA.com).

## GET CONNECTED CSPRA Online

Catch up on CSPRA activities, contact your District Reps, Board. or Officers, read the WAVE online:

<http://www.cspira.com>

## Are you traveling soon?

Want to find out what's going on in the State Parks around you? Visit the events page on the California State Parks website to find out what's happening in parks around the state:

[www.parks.ca.gov/events](http://www.parks.ca.gov/events)





California State Park Rangers Association  
P.O. Box 10606  
Truckee, CA 96162  
[www.cspra.com](http://www.cspra.com)

PRESORTED  
STANDARD  
U.S. POSTAGE  
PAID  
PERMIT NO.  
163, PASO  
ROBLES, CA

*Save The Date - March 5-9, 2012 CSPRA Training (Parks Conference)*

## **CALIFORNIA STATE PARK RANGERS ASSOCIATION**

### **Mission Statement**

**The California State Park Rangers Association is an organization of park professionals dedicated to advancement of the highest principles of public service, and established to support, protect, and defend the integrity of State Parks for present and future generations.**



***Founded 1964***