

The CSPRA **Wave**



VOLUME 17, NUMBER 2

Newsletter of the CALIFORNIA STATE PARK RANGERS ASSOCIATION

Spring 2017

"State Park experts and professionals advocating for State Parks since 1964."

Annual Rendezvous **See page 9**

The Annual Membership Meeting will be combined with the 25th Annual Retirees Rendezvous. All members are welcome to join us September 25 to 28, at Ft. Tejon.



Medal of Honor **See page 6**

The Park Rangers Association of California honored several State Park Peace Officers recently at their annual conference. John Regan received the Medal of honor. Seven lifesaving awards were also presented to State Parks people.

Bodie Earthquake **See page 4**

In late December 2016 a series of earthquakes shook Bodie State Historic Park. Here, looking through the blizzard, you can see the boarded-up windows. A complete artifact and structural damage assessment will not happen until spring.



Photo by Eric Draper



Oroville Dam **Update** **See page 10**

We heard a lot about the spillway and the evacuation, but have you heard how it all impacted parks and the people who protect them?



CSPRA OFFICERS

PRESIDENT

Mike Lynch, Retired Ranger/Supt.
(530) 613-4732, mike@cspira.com

VICE PRESIDENT

Sue Neary, Santa Cruz /Pajaro
(831) 428-1535, sue@cspira.com

SECRETARY

Pat Clark-Gray, Reg. Interp. Specialist
(831) 384-5119, pat@cspira.com

TREASURER

Tom Bernardo, Retired Ranger/Supt.
(916) 990-2009, tom@cspira.com

DIRECTORS

Miles Standish, Retired Ranger
(831) 466-9789, miles@cspira.com

Liz Steller, Retired District
Services Manager,
(209) 536-5932 liz@cspira.com

Carl Chavez, Retired Ranger
and Division Chief
(530) 836-0848, carl@cspira.com

Frank Padilla, Ret. Ranger/Supt.
(805) 660-0245, frank@cspira.com

Kim Preston, Ret. Admin. Chief
(530) 589-0250, kim@cspira.com

Ann Meneguzzi, Retired, Sup. Rgr.
(209) 373-9844, ann@cspira.com

Rob Walton, Ranger, Marin Sector
415-388-3653, rob@cspira.com

PAST PRESIDENT

Victor Bjelajac, North Coast Redwoods
vbjelajac@cspira.com

ADMINISTRATION

Mike Lynch, Acting Executive Manager
P.O. Box 3212,
Bowman, CA 95604-3212

MEMBER SERVICES

Betsy Anderson
(707) 884-3949, betsy@cspira.com

INTERNET COMMUNICATIONS

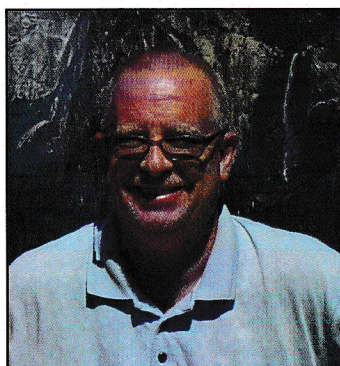
Jeffery B. Price, Webmaster
webmaster@cspira.com
www.cspira.com

The Wave

ISSN 0087-9176
Brian Cahill, Editor
Brian@cspira.com

Published by CSPRA, PO Box 3212
Bowman, CA 95604-3212

President's Message



By Mike Lynch, President

The Golden Era of California State Parks Going...going...gone

We did not know it at the time, but most of us worked, in whole or part, during what could be called the modern Golden Era of California State Parks.

I look at this Golden Era as going back to the appointment of William Penn Mott, Jr as Director in 1967. It continued for nearly 50 years, with some ups and downs, to about 2007 when the effects of the Great Recession started to hit and California State Parks became a low priority for the Governor.

Mott's vision for state parks was to professionalize all aspects and levels of the department. This included development of a variety of new and innovative programs in interpretation, natural resources, law enforcement, planning and grants. The era was punctuated by somewhat regular large state park bonds and a related growth of new parks and new park developments. The department expanded during this

time with more employees, new classifications, and new and growing programs. Added to this, pay and benefits were generally rising throughout the era.

Some of programs, efforts and improvements that were established or flourished during the Golden Era include:

- *Expanded training for all employees in all areas, including administration, Maintenance, interpretation and public safety*
- *Establishment of the department (Mott) training center*
- *Development of the Cooperating Association program*
- *Professionalizing field management*
- *Resource management/ protection unit*
- *Statewide brochure program*
- *K-9 program*
- *Junior Ranger and Litter Getter Programs*
- *Defensive Tactics program*
- *Increased use of resource specialists*
- *California State Parks Foundation*
- *Creation of the volunteer program*
- *Systematic approach to statewide planning*
- *Career Development Program*

Many of these programs and, probably more importantly, basic services started into a freefall with the ongoing decreases in funding, department

Continued on page 14

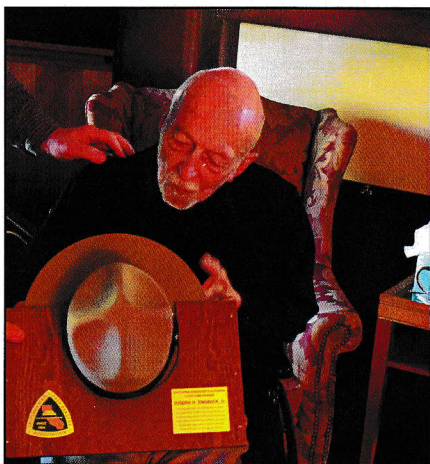
Joseph H. Engbeck, Jr.

Honorary Ranger Presentation

California State Park Rangers Association (CSPRA) selected Joe Engbeck as the CSPRA Honorary Ranger for 2017. The award was presented Sunday, February 26 at his home in Berkeley, since Mr Engbeck will be unable to join us at the Annual Membership Meeting in September.

According to CSPRA President Mike Lynch, "This honor is in recognition of your lifetime of work that has consistently focused on state parks and the park and environmental movements in California. Your enduring message has highlighted the significance of natural and cultural heritage preservation, education, and the importance of connecting the people with their parks."

A CSPRA delegation of Lynch, Dick Troy (chair of the Hon-



Joe admires his new hat, in the Honorary Ranger hatrack crafted by Jeff Price.



Dick Troy, chair of the Honorary Ranger Committee, congratulates Joseph Engbeck, our 2017 honoree. Photo by Donna Pozzi.

orary Ranger Committee), Donna Pozzi, John Mott, Ann Meneguzzi, and Mary Stokes made the presentation carrying CSPRA's congratulations.

Joe Engbeck is an environmental activist, historian, and writer of books, pamphlets, and brochures dealing with the State Park System and Western heritage. Joe was a writer, editor, and manager for the California State Park publications program, retiring in 1995. In the 1960s, before joining the department, he helped organize People for Open Space.

Joe was an original member of CSPRA's Save Bodie! Committee whose diligence and perseverance during the 1990's helped to preserve the cultural and scenic resources of Bodie State Historic Park.

Joe Engbeck's lifetime of work has consistently focused on

state parks and the park movement in California. His enduring message has highlighted the significance of natural and cultural heritage preservation and the importance of connecting the people with their parks. Like Frederick Law Olmsted, Joe Engbeck has promoted the idea that parks are not a luxury; rather, they are essential for the quality of life of our citizens and for the health of our democracy.



Joe was joined by family; son Eric middle, Eric's wife Debbie left and Sondra (Joe's wife) right. Photo by Dick Troy.

Bodie Earthquake

*By J. Brad Sturdivant
President, Bodie Foundation*

Over the past several years, Bodie has been living up to its history of "Bad Men, Bad Whiskey, and the Worst Climate Out-of-Doors." The Bad Men and Bad Whiskey may have come to an end but the worst climate is alive and well.

It is not enough that winds over 200 MPH have hit our fair city causing buildings to collapse, roofs to blow away, windows to be blown out, and brick chimneys to topple over. Two occasions I recall watching 3ft X 6ft sheets of corrugated roofing iron blowing south to north as if they were sheets of paper, but in late December 2016 a series of earthquakes shook the area approximately 14 miles from Bodie.

Those quakes, registering 5.7, 5.7, and 5.5, and most recently a 3.6 in the same area, caused considerable damage at Bodie State Historic Park.



Temporary stabilization on one of Bodie's many damaged chimneys. Photo by Eric Draper

From my trip to Bodie soon after the first series of quakes it appeared as though the DeChambeau Hotel had suffered the most noticeable damage. The DeChambeau is a large two story brick structure located on the south end of Main St. There

were/are visible cracks on the west side of the structure both on the outside and inside. A hole, approximately 2ft X 3ft, also on the west side, leaving brick thrown in and out as well. Inside, shelves knocked over, stacked bed frames shifted from one side of a room to the



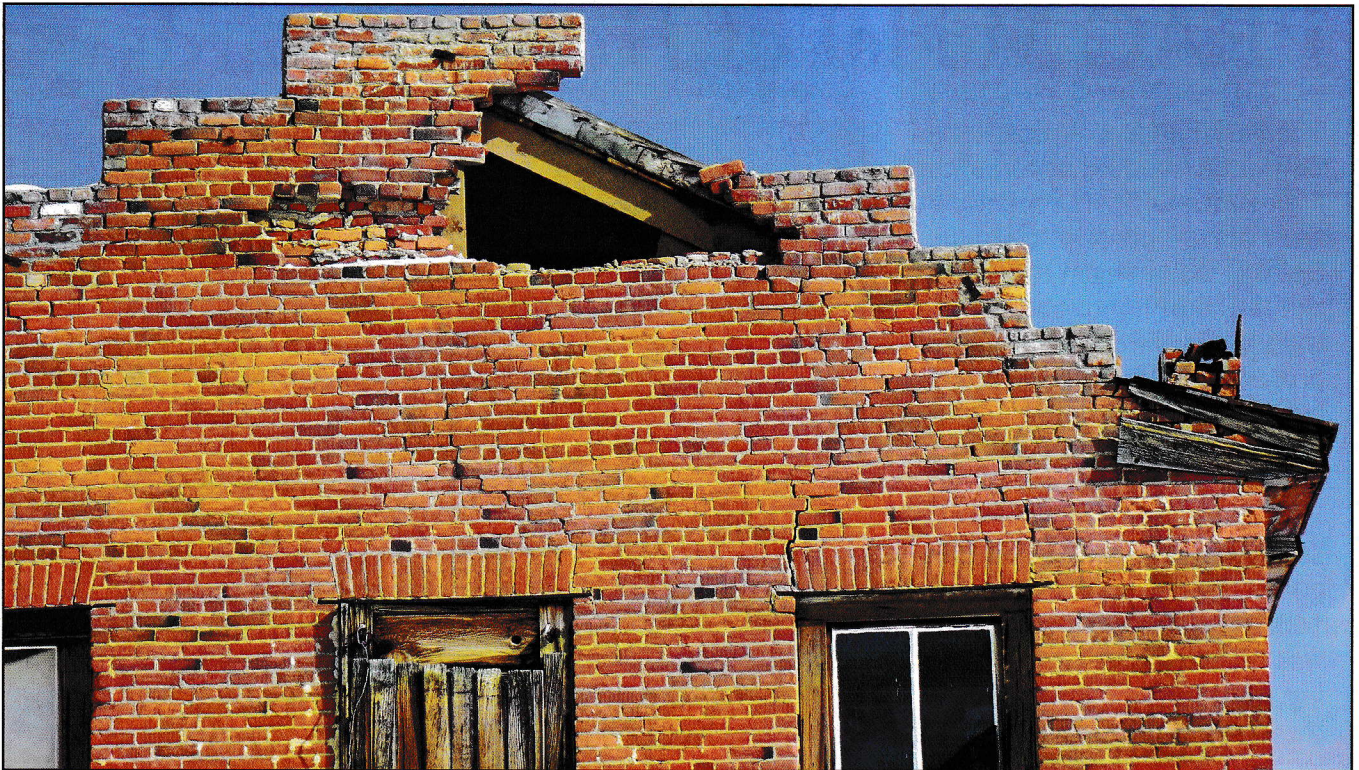


Photo by Eric Draper

other, and supports for an historic mailing remnant when the DeChambeau used to be a post office.

A few brick chimneys had been toppled and others twisted but remaining upright. From what I could see, the only chimney that remained in good shape had been restored after a 2006 wind storm had sent it tumbling to the ground. A long time donor to the Bodie Foundation contributed the \$6,200.00+ to return it to its former self — a case for arrested decay. It will work if funded.

Other buildings received damage as well. Toppled and broken bottles from displays in the IOOF Hall, Sam Leon Bar and the J.S. Cain House, a large window lies in pieces in the front of Boone Store.

Several recent quakes registering as high as 5.7 caused considerable damage at Bodie

Of major concern to State Parks and the Bodie Foundation is the current status of the Bodie water system. The 50,000 gallon water storage tank is dry. Attempts to refill and get water running again have failed as of this writing. The park is currently without running water. As one current park employee noted, “it takes a lot of melted snow to flush a toilet.”

Artifact and structural damage assessment will not happen until spring.

As of early March, with a clear-

ing window in the weather, State Parks, along with CALTRANS, will begin clearing SR 270/Bodie Road in an effort to work on the water system. The park will remain closed to visitation until further notice.

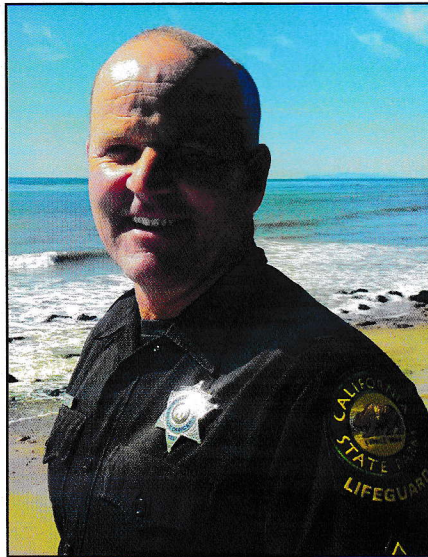
In spite of 200 MPH winds, earthquakes, and now 4 to 5 feet of snow on the ground, both snow cats were not running to get employees in and out of the park. One snow cat has been taken to Reno, NV for repairs. Bodie, for the most part is still standing. It will need a lot more help come spring.

PRAC Medal of Honor Awards

The Park Rangers Association of California honored several State Park Peace Officers recently at their annual conference in La Quinta. John Regan received the Medal of Honor and seven lifesaving awards were also presented to state parks. NPS rangers and Santa Clara and Marin County Rangers were also honored at the ceremony.

State Park Peace Officer, Lifeguard John Regan — On June 14, 2016 while Officer Regan was off duty, at his park housing, he observed a man enter the water on a surf board wearing a back pack and a diving weight belt. Recognizing that this was unusual. He directed his wife to call dispatch and request additional assistance and he went immediately out to initiate a rescue. After paddling some 200 yards through several sets of overhead surf to reach the man, he found him clinging weakly to his board in the surf impact zone, Officer Regan reached him just as he went under the surface of the water.

Despite the unrelenting surf and heavy ocean conditions he worked to place the unresponsive man who was being pulled down by a 40-pound backpack full of rocks and a weight belt onto his rescue paddle board. Officer Regan quickly freed the 250 lb. man from the backpack and lifted him onto his board before paddling himself and the victim another 100 yards out, past the dangerous surf impact zone. Once clear of the 4-6



State Park Peace Officer- Lifeguard John Regan.

foot breaking waves, Officer Regan provided care for the victim until two additional Lifeguards arrived to assist him in bringing the victim to shore for medical care and transport to a medical facility. Due to Officer Regan's vigilance, coupled with his extraordinary swiftness of action and courageous behavior, he truly saved the despondent man's life that day.

Officer Regan has been nominated by his peers and selected by the Association to receive

the Medal of Honor for his conspicuous bravery in the performance of his duties under hazardous conditions to sustain human life.

State Park Peace Officer Jennifer Kramp-Wilson — On the afternoon of September 16, 2016, while on vacation in Maui, Hawaii Officer Kramp-Wilson responded to cry for help at a nearby beach where an adult male had been pulled from the water after a shallow dive. The male was unconscious, not breathing and had no pulse. With no protective equipment at hand she did not hesitate to render aid. After conducting her initial assessment, she began compression only CPR until a mask and other medical equipment was brought to her location. She then continued to provide high quality CPR for over 10 minutes until the arrival of advanced life support personnel. The patient was transported to a local hospital with a pulse but not breathing. The hospital also discovered that he had suffered a fractured vertebra because of the shallow dive. As a direct

Periodically, park professionals will face emergency situations that are so extreme that by engaging in the emergency, they not only jeopardize their personal safety, but risk their own lives.



State Park Peace Officer Jennifer Kramp-Wilson

result of the high quality basic life support Officer Kramp-Wilson provided the patient was awake with no paralysis several days after the incident.

State Park Lifeguard Dillion Clevenger — On the morning of August 28, 2016, Lifeguard Clevenger were driving to work near Sycamore Cove Beach when he saw the emergency lights of a fire engine and a crowd gathering on the bluff near Bass Rock. He chose to stop at the pullout, and saw a scuba diver being battered by the large surf while weakly clinging to the rock outcropping. Immediately recognizing the grave danger the victim was in, and recognizing that the victim needed to be rescued before being drowned or gravely injured from being pummeled on the jagged rocks he chose to act.

Lifeguard Clevenger asked the Fire Department Incident Commander to request ad-

ditional state lifeguards. He then climbed down the rocky embankment and entered the water while fully clothed, and without a rescue tube to rescue the 250 lb., approximately 50-year-old man who was gasping for air upon the rocks 15-20 yards off shore. Working alone in the surf he maneuvered the man between the large rocks in the water until he could bring the exhausted victim, who was unable to walk, to the shore line. Once on shore he assisted fire department personnel in carrying the victim to the beach and assisted in placing the victim on a backboard and providing medical care. The victim was then transported to a local hospital for treatment of rib and back injuries.

State Park Peace Officer Brett Reid — On the afternoon of February 20, 2016, Officer Reid responded to a call for multiple people in trapped in a rip current at Sunset State Beach. On his arrival he discovered 6 adults in distress caught in the surf. Another person, later identified as an off duty police officer, was attempting a rescue using a boogie board. While not a trained lifeguard, Officer Reid swiftly entered the water to assist in rescuing the fatigued and hypothermic victims and brought two of the victims to the safety of the beach where they were treated for their injuries and transported to a local hospital.

State Parks Lifeguards Matt Colapinto, Ben Vail, Shane Scroggins, and Tim Corliss On the afternoon of January

30, 2016 a group of off-duty California State Parks Lifeguards; Matt Colapinto, Ben Vail, Shane Scroggins, and Tim Corliss a former CA State Lifeguard/Ranger, had just finished surfing at Montaña de Oro State Park. The winter swell with surf measuring 20-25 feet in height and a thick fog ended the session. While stowing their equipment on the bluff above the beach they heard yelling coming from the beach below. From the edge of the bluff a fully clothed, elderly man could be seen trapped in a rip current about 20 yards off shore.

Although all of the Lifeguards were off duty, wearing jeans with no rescue equipment they rushed together to the surf to begin a rescue. The water was neck deep with large shore break and fast incoming surges making the rescue difficult. Working together they were able to bring the 70-year old man safely to shore and on to the dry beach before the victim succumbed to drowning. Once reaching the shore they worked together with arriving park rangers to render emergency medical care to the victim. The victim, a non-swimmer who had been trying to reclaim a hat from the surf, was able to return to his family and friends thanks to Lifeguards Colapinto, Scoggins, Vail and Corliss' s willingness to respond.

All of the lifesaving award recipients have been selected for this award for their quick actions, professional conduct, skill and dedication to duty that directly led to saving of human life.

Sara Skinner Receives National Recognition

Sara Skinner, Training Specialist at the Mott Training Center, recently received a prestigious national honor. Ms. Skinner was cited for Meritorious Service to the profession of interpretation. The award is presented annually by the National Association for Interpretation. She received the award at the NAI National Conference held in Corpus Christi, Texas.

Sara has had a long-term impact on the field of interpretation. She polished her interpretive skills as a field interpreter, working many years as a seasonal before being hired as a full-time professional interpreter. She brings enthusiasm, creativity and a love for people to every assignment. She has been the catalyst for new programs and initiatives wherever she goes.

"Sara is tirelessly devoted to the interpretive profession, her colleagues, and NAI. She always steps up to assist by serving on committees, teams, and boards - and by taking on solo projects," reports Donna Pozzi, Interpretation and Education Division, Chief (retired). Sara currently holds a position in our statewide training center, where her coaching and mentoring are enlightening hundreds of interpreters across the state thus making a meaningful impact on hundreds of thousands of park visitors. Helping new ranger and lifeguard



cadets become professional interpreters, she is a powerful role model.

She applies her field experience, exemplary organizational skills, and savviness in negotiating bureaucratic barriers to bring relevant training to interpreters, a recent example being her pivotal role in the innovative NAI InterpTech2016 training.

"Sara exhibits leadership in quiet ways; poise under pressure, pillar of reliability, true professionalism and loyal friendship," says Statewide Volunteer Coordinator Karen Barrett. "She's served the profession in and strengthened it by applying her exceptional organizational skills. Through countless hours of service to our profession and in countless ways, she is a leader and an inspiration." Nominations are open for next year's awards - who are you going to nominate?

CSPRA is affiliated with other non-profit organizations that share our goals.

The Park Rangers Association of California is a professional organization for park Rangers and other uniformed park employees of municipal, county, special district, state and federal agencies.



The International Ranger Federation is a non-profit organization established to raise awareness of and support the critical work that the world's park rangers do in conserving our natural and cultural heritage.



Federation of Western Outdoor Clubs was established in 1932 for Mutual Service and for the Promotion of the Proper Use, Enjoyment and Protection of America's Scenic Wilderness and Outdoor Recreation Resources.



Association of National Park Rangers is an organization created to communicate for, about and with National Park Service employees of all disciplines and to provide a forum for professional enrichment.



Are you Moving?
Please let us know.
Betsy@CSPRA.com

Not Just for Retirees

Join us at the Rendezvous

Plan to join us for the CSPRA Annual Membership Meeting and 25th Annual Retirees Rendezvous. This year we will gather September 25 to 29, at Fort Tejon and Hungry Valley. You can look forward to Frank's fabulous tri-tip dinner and a tasty pancake breakfast. There will be tours and field trips to surrounding destinations and natural areas. Learn the fascinating history of Fort Tejon including a live cannon firing; explore Hungry Valley, hike Mt. Pinos and take a guided drive up the historic "ridge route" hosted by the Ridge Route Museum and much more. Friday will feature a tour of Tomo Kahni.

and a quarterly CSPRA Board meeting. The Fort Tejon Group area will accommodate our self-contained RVers and tents. The Holiday Inn Express Lebec/Frazier Park is not far from Fort Tejon. A block of rooms is being held for attendees at the discounted rate of \$91/night for up to 4 in room. (King or 2 Dbl) To get this special rate call the hotel directly and request the 'CSPRA-Tejon' group rate. HolidayInn Express — Lebec / Frazier Park (661) 248-1600.

All this for the bargain price of \$25. Register here http://www.cspra.com/wsp_images/2017regform.pdf



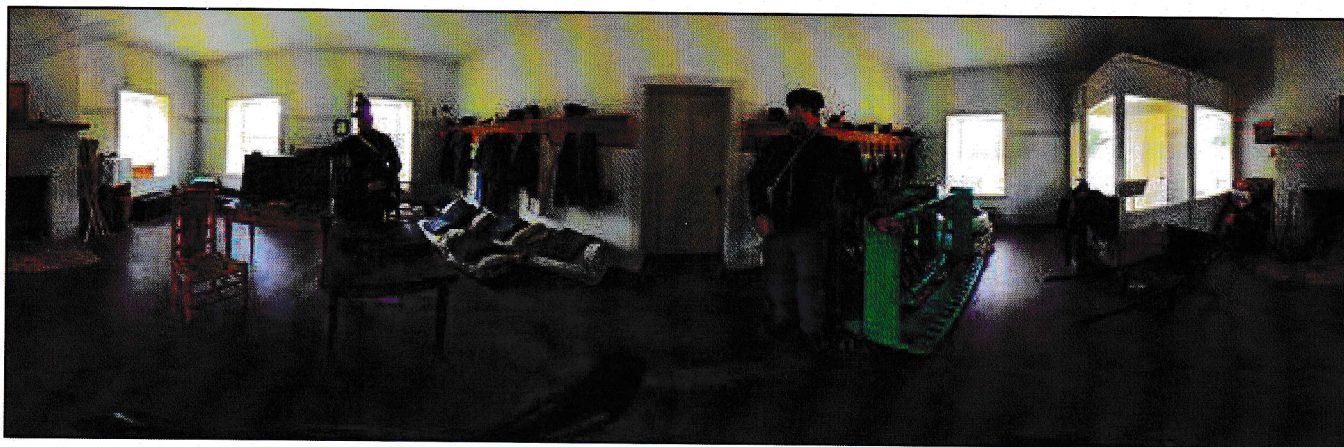
Photos by Steve Ptomey

On the membership meeting Agenda, we will be reviewing CSPRA's goals for 2018 and discussing updates on the Department Transformation. Enjoy the camaraderie of old and new friends both active and retired employees, family and friends.

This event includes both the annual membership meeting



Camels? At a Fort? What's up with that? Join us at Fort Tejon in September and you may find out.

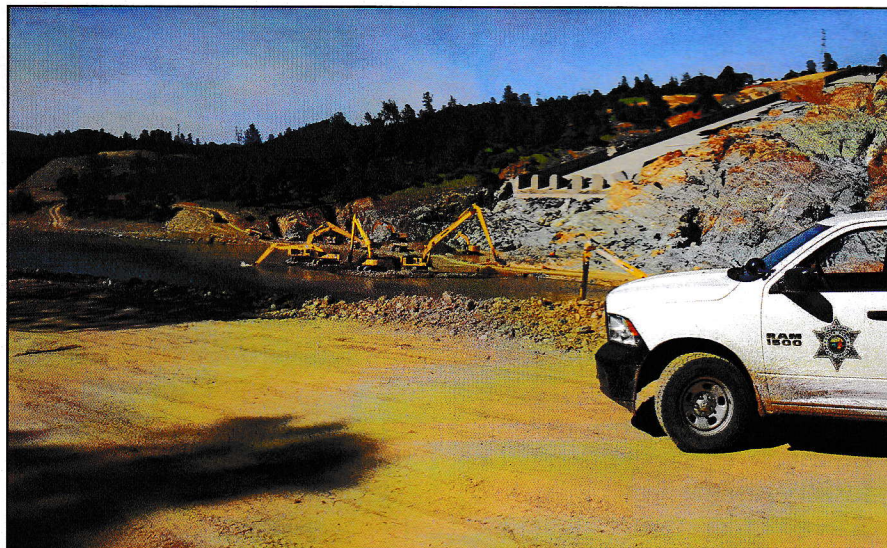


Oroville Update

By Aaron Wright

On February 7, 2017 around 1030 hours State Parks was notified there may be an issue with the Main Spillway at the Oroville Dam. A ranger and seasonal lifeguard were first on scene and recorded the initial failure of the spillway, later told this video saved the state millions in figuring out what happened. Park staff quickly evacuated the area and closed down the dam, other roads as needed, and trails to this area. We embedded staff with the Department of Water Resource's (DWR) incident command team, coordinating closely with them. We reached out to our partner-ing agencies in a collaborative effort as we determined the closures and what roles each of us would play.

By the next day we hosted a co-operator meeting in our office, and were assisting Department of Water Resources with management of the incident and reaching out to other agencies. From here, CalFire and Butte County Sheriff took an active role helping DWR to coordinate with other agencies and the media, but our office had become the location for cooperator meetings and for a long time all of the press conferences.



Throughout the rest of the week park staff continued to patrol the water near the dam and spillway, patrol all of the trails around the Diversion Pool, host meetings, and work with DWR at the incident command. State Parks also took the lead in making sure cultural and natural resources were being protected. We helped coordinate with the local tribes and assisted during the development of plans for protecting sensitive resources.

On February 12, 2017 around 1700 hours the report came into incident command that the water was undermining the Emergency Spillway and we had an hour until it failed. The Butte County Sheriff ordered the evacuation and tasked us with helping. All of the staff responded back to the Lake Oroville Sector Office, some were patrolling on the trails underneath the Emergency

Spillway. The sergeants on duty were tasked with calling all other rangers in to assist. Many staff had families in the flood plain and still worked through the night with evacuations away from their families. All of our campgrounds were opened up for evacuees. We had a superintendent respond from the incident command to Butte College at the law enforcement staging area to help coordinate and get resources organized.

All rangers from the Oroville, Valley, and Clay Pit Sectors came to this staging area as they were able. Rangers from Folsom Lake, Millerton Lake, and from our Off-Highway Vehicle Division all responded from their parks with boats and other equipment. One of our sergeants was left at staging to coordinate tasking our units with assignments. The incident command had been moved to Lake Oroville Golf Course. We

opened up the Visitor Center to serve evacuees and for press conferences. We supported the press conferences and coordinating at the incident command. Northern Buttes District staff came in to provide additional support at both the Visitor Center and Butte College. We had employees at the Visitor Center helping answer phones and coordinate the questions from the responding officers staging at Butte College. We had others working on logistics for housing responding staff and feeding them.

Staff worked through the night and next day evacuating the City of Oroville, south portion of Butte County and into other counties. After the evacuations, we continued operating the Visitor Center 24 hours a day as a point for the public to come and ask questions while evacuated.

The entire Lake Oroville State Recreation Area was closed for the first time in the 50-year history of the park. This allowed our limited staff to focus their attention on our immediate needs and being able to utilize different portions of the park for staging of resources. Parks maintained the campgrounds for the evacuees, helped protect the closed areas from



looters, and all the other tasks that were needed. During this closure a buoy line was also set up to secure the dam and Spillway Launch Ramp area on the water side.

Personnel were assigned to secure visitors from trying to get into the closed area of lake near the dam. Other staff were assigned to patrol the trails and keep people out of the closures around the Diversion Pool. We attended meetings day and night to assist in the emergency operations. Others were assigned to assist with things like the county evacuation plans that were being developed to developing short term and long term recovery plans.

A critical role to managing this incident and keep things going smoothly behind the scenes was

administrative staff and supervisors assigned to keep records of time sheets, scheduling, and budgeting. Primary protection of cultural and natural responsibilities was transferred back to DWR, but State Parks continued in a supportive role.

As we move toward the future, we have continued hosting the cooperators meetings. We are working with local political, recreational, and public safety leaders within our community. Both vessel and trail patrols are expected to be maintained through the next year during construction and repairs to enforce the closure. We continue to have officers available for issues on the water or trails 24 hours a day.

Plans continue to be developed to get the park open again. On a personal note I am very honored to be able to work with such professional and dedicated team of rangers, maintenance workers, administrative personnel, and specialist staff. Without this team all working together we would not have been so successful during this incident.

The entire Lake Oroville State Recreation Area was closed for the first time in the 50-year history of the park.

A Wave Goodbye

Bill Bennett

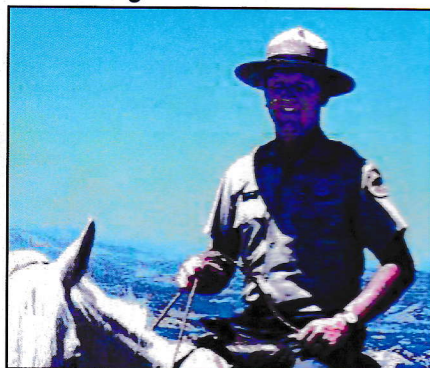
We just learned that Bill Bennett passed away back in April 2016. Bill was a Maintenance Worker II at Big Basin following the Department Reorganization in the early 1970's, later he promoted to a Maintenance Supervisor at High Desert Area.

Bill and Buddy, his wife of 73 years, spent much of their spare time hunting and collecting Native American artifacts in the desert. After retiring Bill and Buddy lived in the Palm Springs area, then later moved to Paradise, California. About 5 years ago Bill and Buddy moved to Redding, California to be close to their daughter. They lived in a assisted living facility in Redding, at the time of his passing Bill was 98 years old.

Bob Anderson

Bob Anderson made his way to the great fishing trip in the sky in November. Following in his father's footsteps, Bob became a state park ranger in 1971 and served in some of the most wonderful parts of California.

In a beautiful twist of fate, Bob became a ranger at Patrick's Point State Park in 1983 and took up residence in park housing just right next door to a home he'd lived in as a child. After 19 years at Patrick's Point and 31 with parks, Bob retired from California State Parks in 2002, thus beginning a new adventure, one with a little less fog, up to the little town of Willow Creek. Bob and Lee Scott were married in 2004 at their home in Willow Creek.



Dana's photo courtesy of Jim Davis

Dana Long

Dana is fondly remembered by co-workers from Cuyamaca Rancho SP and Folsom Lake SRA. Dana passed away after a short battle with cancer, and was buried at Mira Mar Naval National Cemetery with only family members in attendance. Dana was the ultimate Ranger, a gentle man and always a gentleman. Dana & Bonnie resided in Tupac, AZ, and were active in the senior community. Dana was part of CSPRA from the very beginning. He was a long time supporter of Graybears and he will be greatly missed.

Doug Jacobsen

"Doug" Jacobsen, 73 years old, passed away in March. Doug was a ranch-hand on the Jacobsen family peach and almond orchards, while attending college. He served as a Park Attendant at Squaw Valley Ski Resort, then at the Governor's Mansion in Sacramento, CA. Later he served as a State Park Ranger at San Clemente State Park and Cuyamaca Rancho State Park. In 1972, he promoted to Lake Oroville State Recreation Area. While at that assignment, he filled many positions, including Supervising Ranger.

Ted Crane

Ted Crane passed away in February at age 75, eagerly looking forward to salmon fishing come July. Ted was a go-to guy when a problem needed solving. He was especially helpful during the 1992 - 93 transition. Among his memorable assignments were Park Aid, Park Attendant, Ranger I, Maintenance Supervisor at Folsom SRA, Northern Region Deputy Director and later he headed-up Facilities Management at Headquarters.

While working at headquarters for his last Park assignment colleagues found him to be one of the most complete managers — so organized that he often made others feel guilty they weren't doing better. He had a work ethic second to none and tremendous analytical skills. He knew more about the inner workings of the Department than any one. He will keep that great Park "in the beyond" well maintained. A remembrance service will be held at a later date at Standish-Hickey where Ted began his park career.



Ted's photo courtesy of Thea Crane

Jim Carpenter

Jim Carpenter passed away after a battle with cancer. Jim graduated from Humboldt State University with a Bachelors of Arts in Biology, summa cum laude. Returning from a stint in the Peace Corps, he went to work for the National Park Service as a Ranger Naturalist at Sequoia National Park and Death Valley National Park. He met and married his wife of 38 years, Elizabeth, also a Ranger naturalist, at Sequoia National Park.

Jim began his twenty year career as a California State Park Ranger at Big Basin Redwoods and then worked at his dream job, Point Lobos State Reserve and Asilomar State Park until his retirement in 2001. He enjoyed interpreting the natural environment and history in the parks hoping that people would enjoy and understand these special areas and want to protect and preserve them for future generations. A bench will be built and dedicated to Jim in a local park.



Jim Carpenter

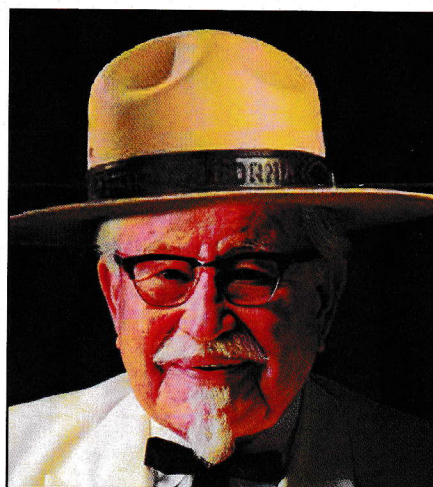
Harry Batlin

Harry Batlin passed away in late March. Harry served memorably as Chief Ranger at Half Moon Bay, San Mateo Coast. He brought a balance and a broader view of the role of Ranger; incorporating poetry, philosophy and a reminder for us to challenge our assumptions.

Harry was bigger than life. He is fondly remembered for his philosophy on interpretation

as well as the small mirror he kept in his uniform shirt pocket – he was a special man. He was a brilliant, caring environmentalist, even when he was hard-headed. He was deeply dedicated to our profession and wanted to pass that on to young rangers. He served as a mentor who always took the time to help a new ranger.

A memorial is being planned for May.



Leroy E. Ross, Jr.

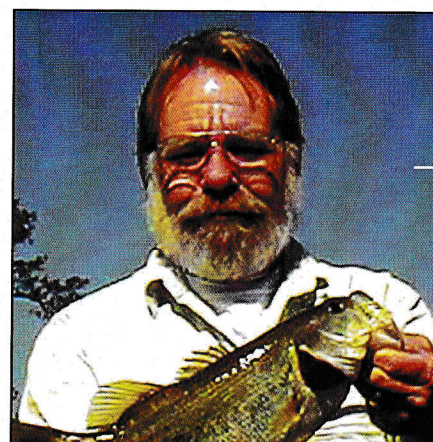
Long-time Supervising Ranger, former CSPRA member, and one very colorful coworker, Leroy E. Ross, Jr., passed away late last month at the age of 95, in Vista California.

Ross was an Army Colonel before starting to work for parks back in 1970. His nickname was "The Colonel" after he grew a white goatee and mustache, and wore glasses with his white hair. Some said he looked just like KFC's Col. Sanders.

Jack Thompson

Long time Half Moon Bay Area Parks employee Jonathan (Jack) Thompson passed on March 16. Jack kept up morale with his (slightly off color) jokes and stories. According to coworkers he also did a hell of a job holding the old facilities together.

Jack's wife, Sherry Thompson is also a career DPR employee who retired from the Santa Cruz Area. A pot luck style memorial picnic for Jack will be held at the family farm in Grass Valley in May.



Jack Thompson

President's Message
Continued from Page 2

scandals, the spin-off of state park units, and the low priority backing from the Governor's Office, starting in 2007.

After almost a decade of waiting and hoping for this slide and decline to bottom out, we appear to be still waiting for rock-bottom. It will probably take another decade for many basic services, staffing levels and programs to build back and none may ever reappear in any form approaching the levels of the Golden Era.

I realize that this view is obviously depressing and backward looking. One must hope that all the transforming and reorganizing currently occurring will

produce not just a method to manage the decline, but might somehow take us to a new Golden Era for the California State Park System.

In this regard, leadership, com-

bined with a passion and keen commitment to the best interest of the California State Park System, will be vital to a future prosperous and well-functioning state park system that provided the very best to the public.

Big Thanks to Janet Carle CSPRA Newsletter Editor for 15 Years



On behalf of the whole CSPRA membership, I want to extend an immense thanks to Janet Carle who served as editor of the CSPRA newsletter for 15 years. Wow, what a record of service!

Dave Carle, as Janet's "production assistant" also deserves thanks for his role in getting the newsletter out quarter after quarter, year after year.

Mike Lynch, President

California State Parks Anniversary Committee All Patches \$3 each with free shipping



Payment: Checks to CA State Parks Anniversary Committee (CSPAC)

Send to: CSPAC, P.O. Box 3212, Bowman, CA 95604-3212

PayPal payment to: cspac150@gmail.com - More Patch Info: cspac150@gmail.com



www.CSPRA.com

Follow us on
twitter

twitter.com/@_CSPRA_



Find us on
facebook

facebook.com/CSPRA

CSPRAnet

Member List Server

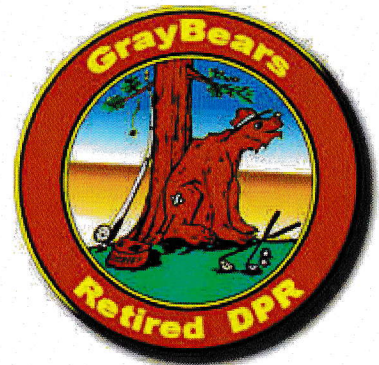
Sign-up for timely CSPRA news right in your inbox.

Just send your email address (no State emails please) to
webmaster@cspira.com with the
subject line "add me to CSPRAnet"



Retiring Soon?

If you or a co-worker will be retiring soon, please contact Membership Services Coordinator Betsy Anderson at (707) 884-3949, betsy@cspira.com.



Already Retired?

Want to keep in touch after you leave DPR? Join GrayBears email ListServ – FREE and EASY
graybears@cspira.com

Join CSPRA Or join us online at cspira.com

Name: _____

Address: _____

City _____ State _____ Zip _____

Job Classification: _____

District / Park: _____

Social Security # _____ (required for payroll deduction)

Phone (W) _____ Phone (H) _____

Email: _____

Please send my newsletters:

- ☐ as a PDF file by email;
☐ by postal mail (hard copy)

I hereby authorize the State Controller to deduct from my salary and transmit as designated an amount for membership dues in the California State Park Rangers Association. This authorization will remain in effect until cancelled by myself or by the organization. I certify I am a member of the above organization and understand that termination of my membership will cancel all deductions made under this organization.

Signature _____

Date _____

Membership Type (Check one)

- ☐ Active \$10/month
☐ Active Retired \$60/year (\$5/mo.)
☐ Supporting \$36/year*
☐ Organization \$50/year*
☐ Benefactor \$1,000/life*



* please include check for 1 year's dues for these membership levels.

Membership by Mail:

CSPRA — Betsy Anderson
PO Box 618 Gualala, CA 95445

California State Park Rangers Association
PO Box 3212
Bowman CA 95604-3212

RETURN SERVICE REQUESTED



California State Park Rangers Association

CSPRA is an organization of State Park professionals dedicated to advancement of the highest principles of public service, established to support and preserve California State Parks for present and future generations.

Founded 1964