



The CSPRA

# Wave

*Newsletter*

VOLUME 17, NUMBER 1

CALIFORNIA STATE PARK RANGERS ASSOCIATION

WINTER 2017

*"...to support, protect, and defend the integrity of State Parks for present and future generations."*



## Winter Wakes Up



*see page 5*





## CSPRA OFFICERS

### PRESIDENT

**Mike Lynch**, Retired Ranger/Supt.  
(530) 613-4732, mike@cspira.com

### VICE PRESIDENT

**Sue Neary**, Santa Cruz /Pajaro  
(831) 428-1535, sue@cspira.com

### SECRETARY

**Pat Clark-Gray**, Reg. Interp. Specialist  
(831) 384-5119, pat@cspira.com

### TREASURER

**Tom Bernardo**, Retired Ranger/Supt.  
(916) 990-2009, tom@cspira.com

### DIRECTORS

**Miles Standish**, Retired Ranger  
(831) 466-9789, miles@cspira.com

**Liz Steller**, Dist. Services Mgr, Valley Dist  
(209) 536-5932, liz@cspira.com

**Carl Chavez**, Ret. Ranger/Division Chief  
(530) 836-0848, carl@cspira.com

**Frank Padilla**, Ret. Ranger/Supt.  
(805) 660-0245, frank@cspira.com

**Kim Preston**, Ret. Admin. Chief  
(530) 589-0250, kim@cspira.com

**Ann Meneguzzi**, Retired, Sup. Rgr.  
(209) 373-9844, ann@cspira.com

### PAST PRESIDENT

**Victor Bjelajac**, North Coast Redwoods  
vbjelajac@cspira.com

### ADMINISTRATION

**Mike Lynch**, Acting Executive Manager  
P.O. Box 3212, Bowman, CA 95604-3212

### MEMBER SERVICES

**Betsy Anderson**  
(707) 884-3949, betsy@cspira.com

### INTERNET COMMUNICATIONS

**Jeffery B. Price**, Webmaster  
webmaster@cspira.com  
www.cspira.com

**The CSPRA Wave: Janet Carle**, Editor  
(760) 647-6431, wave@cspira.com  
(ISSN0087-9176)  
is published by CSPRA, PO Box 3212  
Bowman, CA 95604-3212

### Cover photos:

*Historic postcard courtesy Mike Lynch*  
*Pioneer Carbin Tree: @ Alan Beymer*

## President's Message



**M.G. "Mike" Lynch, President**

First, I want to extend a welcome to new Board Members **Carl Chavez**, **Kim Preston** and **Frank Padilla**, and to new Secretary **Pat Clark-Gray** and new Treasurer **Tom Bernardo**. Thanks for serving!

CSPRA, for over 50 years, has been the conscience of the department. I think that this "conscience" role is the paramount one CSPRA must fulfill in the coming years. In this regard, I perceive the top issues facing California State Parks are the many threats to park resources, programs and professional field operation, all of which are linked to the continuing severe budget shortfalls, transformation changes and reorganization. I strongly feel that transformation, reorganization and positive change cannot be successful without adequate funding support. Without suitable funding, all that is being done is to move the few remaining peas under differently titled pods.

This is not a happy or positive situation. On the other hand, we cannot wish it away. I have heard the following comments by CSPRA members recently:

*"paralysis of analysis."*

*"turning over of the management of numerous units to others is a threat to the integrity of the California State Park System...California State Parks should be operated by State Park professionals...When does a park system cease being a system?"*

*"Demise of the Professional*

### *Generalist Ranger."*

These comments reflect some of the issues and fears many active and retired state park staff are feeling right now. CSPRA must work to identify, highlight, and point out to the Department the threats to park resources and programs, and promote professional adherence to the Department's mission and the heritage role of maintaining the integrity of the state park system.

CSPRA's purpose and objectives\* are just as valid now as they were when the organization was first founded in 1964.

\*\*\*\*\*

*\*CSPRA Purpose: The California State Park Rangers Association is an organization of park professionals dedicated to advancement of the highest principles of public service, and established to support, protect and defend the integrity of State Parks for present and future generations.*

*\*CSPRA Objectives: The objectives of this Association shall be to represent, advance, and promote the interests and standards of professionalism of California State Park Employees, to promote the interpretation of our natural and cultural environment, and to promote sound judgment, high quality, and economy in the planning, development, operation, and maintenance of facilities and services offered the public by the California Department of Parks and Recreation.*





## Honorary Ranger

### 2017 CSPRA Honorary Ranger

#### Joseph H. Engbeck, Jr.

##### Historian and Environmental Writer

CSPRA President **Mike Lynch** recently announced the selection of **Joe Engbeck** as CSPRA's 2017 Honorary Ranger. The award will be presented at the Ft. Tejon Annual Meeting in September.

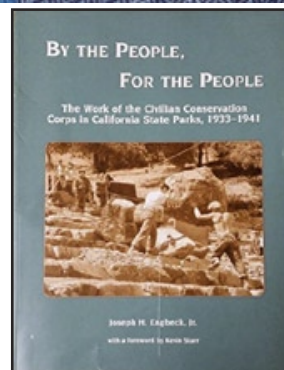
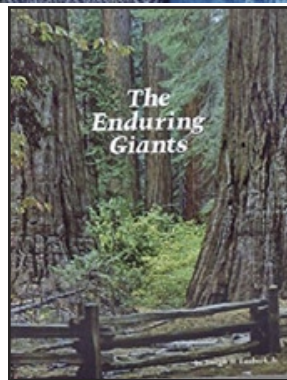
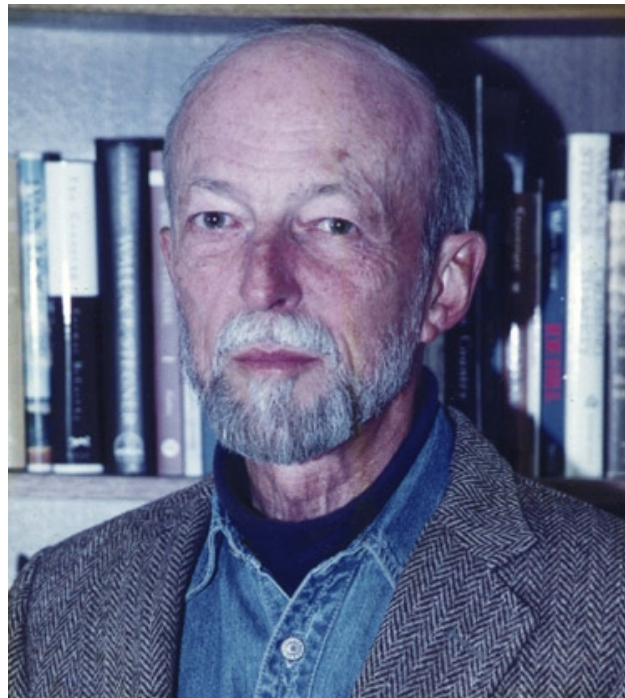
Joe Engbeck is an environmental activist, historian, and writer of books, pamphlets, and brochures dealing with the State Park System and Western heritage.

Joe was a writer, editor, and manager for the California State Park publications program, retiring in 1995. In the 1960s, before joining the department, he helped organize People for Open Space.

While employed at State Parks, Joe was the author of scores of park brochures and mini-folders designed to help park visitors discover and enjoy the resources of their park system. He wrote *State Parks of California, from 1864 to the Present* (1980), a seminal work that describes the birth and growth of the park movement in California and the subsequent acquisition and development the California State Park System.

He authored several books and pamphlets related to specific State Parks, including: *Enduring Giants* (1973), the story of the Giant Sequoias and the Big Trees of Calaveras Big Trees State Park; *Point Lobos State Reserve, Interpretation of a Primitive Landscape* (1970); and "La Purisima Mission State Historic Park" (1979).

Joe was an original member of CSPRA's **Save Bodie!** Committee whose diligence and perseverance



during the 1990's helped to preserve the cultural and scenic resources of Bodie State Historic Park.

After his retirement, he wrote *By the People, For the People* (2002), which describes the contribution of the Civilian Conservation Corps between 1933 and 1941 in developing the facilities and infrastructure for the nascent California State Park System. In 1995 he wrote an extended essay, "The Redwoods, the

United Nations, and World Peace," for the commemoration of the founding of the United Nations held in Muir Woods, where one meeting of the Peace Conference (originally inspired by FDR) had taken place in 1945.

Joe was involved in the production of and served as historian for the award-winning 2012 PBS film *California Forever*, a two-part film that chronicles the history (Episode 1) and the challenges (Episode 2) facing the State Park System in the twenty-first century.

His latest book project is a large-scale work about the history of the movement to protect the remaining stands of redwoods in California and elsewhere. The book is currently in production, sponsored by the Save the Redwoods League.

Joe Engbeck's lifetime of work has consistently focused on state parks and the park movement in California. His enduring message has highlighted the significance of natural and cultural heritage preservation and the importance of connecting the people with their parks. Like Frederick Law Olmsted, Joe Engbeck has promoted the idea that parks are not a luxury; rather, they are essential for the quality of life of our citizens and for the health of our democracy.

Congratulations, Joe!

## *Plumas-Eureka State Park*

# *The Mohawk Stamp Mill*

*by Carl Chavez  
CSPRA Board Member and  
Plumas-Eureka Manager; 1975-79*

The iconic symbol of Plumas-Eureka State Park, the Mohawk Stamp Mill, is facing some tough times, like structures at its sister park, Bodie SHP, whose many buildings are in danger of collapse and further deterioration especially after recent earthquakes. The Mohawk Stamp Mill was constructed in 1877 and is now part of the National Historic District of the park.

As Park Manager at Plumas-Eureka from 1975-1979, I went through several attempts to restore aspects of this magnificent wooden structure. New siding, a new shingle roof and foundation work was undertaken by the Office of the State Architect, but funding ran out to complete all the necessary stabilization work. Since that time the shingle roof was replaced by a metal roof and now, due to structural failure of interior trusses, that roof is in danger of collapse.

The Sierra District does have plans in the works for another attempt to temporarily stabilize the structure but it may take a more concerted effort and expenditure to truly preserve the Mohawk Stamp Mill from following the fate of the adjacent cable Tram Terminus that was still standing when I was there, but now lies in a heap pile.



*Mohawk Stamp Mill in the 1880s*



*Mill after restoration in 1978*



*Mill today. Note the caved in metal roof*



*Tram Terminus building in 1975 (left) and currently, (right)*



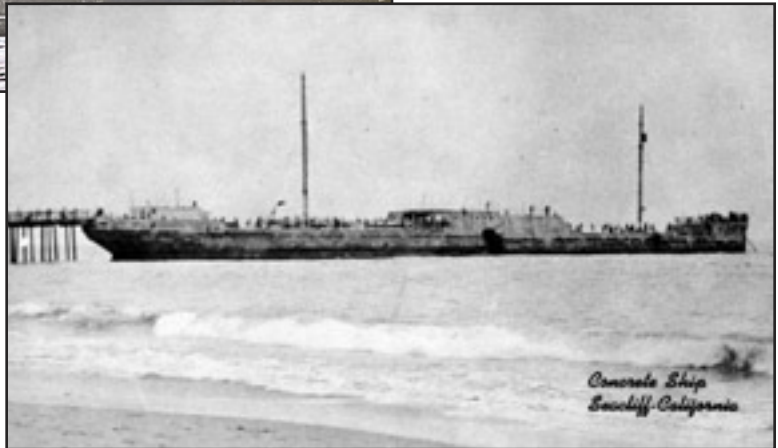
## *Winter Wakes Up*

### *Storm Surge Breaks Up SS Palo Alto*



*photo by Dan Coyro, Santa Cruz Sentinel*

The cement ship at Seacliff State Beach broke in half during the recent January storms. The SS Palo Alto was built as a tanker at the end of WWI, in 1919. Too late to see war service, it was mothballed in Oakland until 1929. Purchased by the Seacliff Amusement Company, it was towed to the Seacliff Pier for use as an amusement ship, with food, dancing and a swimming pool. Damaged by a storm in 1932, the ship closed down and became a fishing pier until unsafe conditions closed access to the public.



*Concrete Ship  
Seacliff, California*



*Former CSPRA President John Mott visiting the  
Pioneer Cabin Tree*

### *Pioneer Cabin Tree Falls at Calaveras Big Trees*

The iconic "tunnel tree" of Calaveras Big Trees State Park fell on Sunday January 8th in the midst of a huge, wet storm. The tunnel was carved in the late 1800s, and a century of visitors rode horses, drove cars and hiked through the ancient Sequoia. Many of us have personal memories of visiting this tree, which was leaning and unhealthy in recent years. May future generations protect and respect such trees.

Thank you for the memories, majestic Pioneer Cabin Tree.

*See more photos on the cover of this issue.*



# CSPRA

## Annual Membership Meeting & Retiree Rendezvous

### Sept 25-28, 2017



**Fort Tejon SHP - Holiday Inn Express, Lebec, CA**  
**Free Camping in Group Area**



## Tentative Schedule

### Sept 25 - Monday

- Early arrival
- 2:00-4:00pm – Hungry Valley SVRA vehicle tour (tentative) (optional)
- 5:00pm - Informal hospitality session at Holiday Inn Express in Lebec
- 6:30 – Informal group dinner at Los Pinos Mexican Restaurant (next to the Holiday Inn)

### Sept 26 - Tuesday

- 9:30am – Registration opens at Holiday Inn
- 10:00am-12:00pm – Hike to Mt. Pinos with Ranger Jack Gorman (optional)
- 1:00am – 4:00pm - Historic Ridge Route vehicle tour (optional) – Meet at Holiday Inn
- 5:00pm - Hospitality session at group campground
- 6:00pm - Potluck at group campground
- 7:30pm - Campfire program - Subject TBA

### Sept 27 – Wednesday

- 7:30 to 9am - Pancake Breakfast at group campground
- 10am-12 noon - Sessions - location Fort Tejon barracks building
  - 10-11 – Tejon Conservancy (tentative)
  - 11-12 – State Parks Transformation and Reorganization
- 12-1:30pm Lunch
  - Welcome
  - Guest speaker - Director
  - Presentations, including for Honorary Ranger
- 1:30-4pm - Membership meeting
  - Officers & Committee Reports, including review of the budget
  - Members Resolutions
  - CSPRA's goals for 2018
- 4:00pm – Walking tour of Fort Tejon and cannon demonstration
- 5-8 pm -Hospitality and evening meal.



### Sept 28 - Thursday

- 7:30 to 9:00am – Coffee and pastries in group camp area.
- 9:30am to 1:00pm - Board of Directors meeting at the Holiday Inn, Lebec

### Departure Day



**CSPRA**  
**Annual Membership Meeting**  
**&**  
**State Parks Retirees Rendezvous**  
**September 25-28, 2017**  
**Fort Tejon State Historic Park**  
**Registration Form**



Name: _____			
Additional Guest/Spouse Name: _____			
Address: _____	City: _____	State: _____	Zip: _____
Mobile Phone: _____	Home or Work Phone: _____		
E-mail Address: _____			
<b>Total number of registrations</b>		_____ x \$25 each	= \$ _____
<b>Historic Ridge Route guided tour (by and benefit for the Ridge Route Museum):</b>		_____ x \$10 per person	= \$ _____
		<b>Total = \$</b>	<b>_____</b>

**Payment**

**Registration Fee - \$25 per person**

1. \_\_\_\_\_ **Payment Enclosed** (Check) - Pay to: CSPRA  
PO Box 3212  
Bowman, CA 95604-3212
2. **PayPal:** paypal2@cspra.com
3. **Credit Card:** \_\_\_\_ Visa \_\_\_\_ MasterCard - 3-digit code on back of card \_\_\_\_\_  
Card # \_\_\_\_\_ Exp. Date \_\_\_\_\_ Billing ZIP \_\_\_\_\_  
Card Holder's Signature: \_\_\_\_\_  
Print Card Holder's Name \_\_\_\_\_ Date \_\_\_\_\_

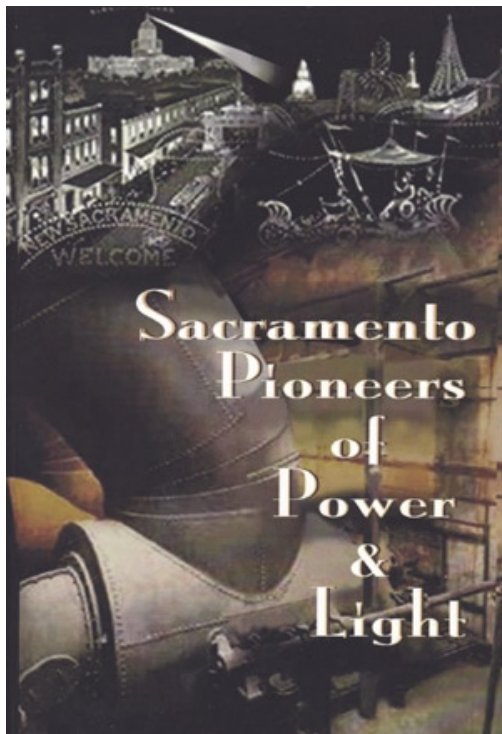
More Information at: [www.cspra.com](http://www.cspra.com) or from [mike@cspra.com](mailto:mike@cspra.com)



# SACRAMENTO PIONEERS OF POWER AND LIGHT

by Dan Winkelman, Robert Livingston, and Rowena Wise Day

Published by the Sacramento County Historical Society



Retired State Park Ranger **Dan Winkelman** is one of three authors of a new book, *Sacramento Pioneers of Power and Light*. Topics include the history of gas lighting in Sacramento, the creation of the Folsom Powerhouse (now a State Historic Park), and the Grand Electric Carnival that celebrated the arrival of Folsom hydro power to Sacramento in July of 1895.

Dan's section on the Folsom Powerhouse covers the evolution of electricity. Yes, the grid provided lighting. However, the real demand for electricity in the 19th century was for rotational power. Although AC had the big advantage over DC of long distance transmission, AC could not provide any torque to start the rotation of a shaft in an AC motor.

The solution to this problem was found in a series of inventions that were installed in two California powerhouses. The Mill Creek Powerhouse in Redlands and the Folsom Powerhouse used a 3-phase system developed by Charles Steinmetz, Elihu Thomson, and Dr. Louis Bell, all while working for General Electric in Schenectady NY. The 3-phase 60 cycle AC first used in these two powerhouses is the standard for the United States electrical grid to this day and it set the stage for the creation of 20th Century modernity.

Copies are available directly from Dan for \$12, including shipping.

To order, send a request and check to:

Dan Winkelman, 1374 Yung Wo Circle, Folsom, CA 95630.

## New Items from the California State Parks Anniversary Committee

#1  
12" Patch  
\$20



**Free Shipping**

CSP-SPPO Coin



1.75 inch  
(actual size)

© 2016 CSPAC

#2 - Coin - \$15



#3 - Pin  
1" - \$5

Payment: Checks to CA State Parks Anniversary Committee (CSPAC),

Send to: CSPAC, P.O. Box 3212, Bowman, CA 95604-3212

PayPal payment to: cspac150@gmail.com - More Info: cspac150@gmail.com



# *The WAVE Editor's Wave Goodbye*

## *Passing On a Labor of Love*

by Janet Carle

It has been a long and interesting ride, being Editor of the CSPRA *WAVE* since 2002. Our first issue was “*Summer in the Sierra*” celebrating the District where Dave and I worked for many years as unit rangers at the Mono Lake Tufa State Reserve.

I agreed to be editor looking toward retirement, knowing it would be nice to keep a hand in with my profession. Not a computer whiz by a long shot, my husband Dave was willing to be the behind-the-scenes *WAVE* Slave tech specialist.

Having the opportunity to talk to park staff all around the state, to feel their passion and learn about their work in such special places, was the best part of the job: visiting Tomo-Kahni, the winter home of the Nuooah, with Ranger **Mark Faull**; traveling a bumpy dirt road in Anza-Borrego with Ranger **Steve Bier** and Superintendent **Mark Jorgensen**; exploring the new park at Fort Ord with Resource Specialist **Ken Gray**; attending myriad Parks Conferences in a range of beautiful and interesting places: the M\*A\*S\*H\* television set at Malibu Creek, an evening tour of Hearst Castle, and a snowy cruise on Lake Tahoe.



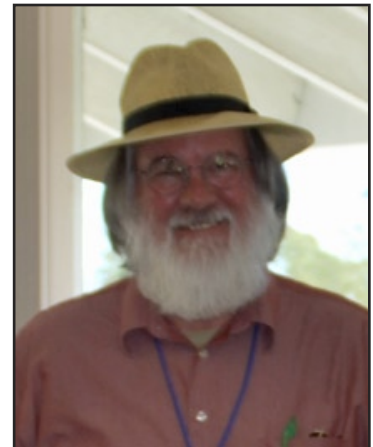
*Dave, the WAVE slave*



We worked with ELEVEN different CSPRA Presidents and never failed to be impressed with their dedication. CSPRA has had its ups and downs during our tenure, but it remains the professional conscience of State Parks. This will become more and more of a critical role in the years ahead. From *Save Bodie!* to park closure threats to the Prop 21 campaign to the anti toll road effort, CSPRA has risen up to protect park values. The organization has come a long way since 1964, when CSPRA was formed by an all male group of supervisors upset with a request for staff to wear period dress at Columbia SHP.

Dave and I will continue to work on special projects, like the *CSPRA 50* book and the *State Parks 2014 Yearbook*.

Thanks to all of you that wrote articles, took photos, shared your dreams, and answered frantic calls for information and higher quality photos!



I am pleased that **Brian Cahill**, who recently retired as Deputy Director for Operations, will take on the editorship for CSPRA. He will bring a fresh voice and new ideas. CSPRA is in a good place, with strong leadership and finances. See you at Fort Tejon!

## Join CSPRA

**Membership Mail:** CSPRA,

Betsy Anderson, P.O. Box 618,  
Gualala, CA 95445 or email  
betsy@cspira.com, 707-884-3949

Or online at [www.cspira.com](http://www.cspira.com)

For all except "Active" or "Active  
retired" payroll deduction, please  
include check for 1 year's dues.

Name: \_\_\_\_\_

Address: \_\_\_\_\_

City \_\_\_\_\_ State \_\_\_\_\_ Zip \_\_\_\_\_

Job Classification \_\_\_\_\_

Social Security #: \_\_\_\_\_  
required for payroll deduction

Phone (Work) \_\_\_\_\_

Phone (Home) \_\_\_\_\_

Email: \_\_\_\_\_

District, Section, or Park: \_\_\_\_\_

Membership type (Circle one):

Active \$10/month

Active Retired \$60/year (\$5/mo.)

Supporting \$36/year

Organization \$50/year

Benefactor \$1,000/life

Check one: I prefer getting the WAVE  
\_\_\_\_\_ as a PDF file by email;  
\_\_\_\_\_ by postal mail (hard copy)

May we print your name as a new member in  
the WAVE? \_\_\_\_\_ I hereby authorize  
the State Controller to deduct from my sal-  
ary and transmit as designated an amount for  
membership dues in the California State Park  
Rangers Association. This authorization will  
remain in effect until cancelled by myself or  
by the organization. I certify I am a member  
of the above organization and understand that  
termination of my membership will cancel all  
deductions made under this organization.

Signature \_\_\_\_\_

Date \_\_\_\_\_

## A WAVE Goodbye

### BLAKE BONHAM

Blake passed away in January at age 41 after a long battle with cancer. He was raised in Pleasanton, California and attended high school in nearby Dublin. Blake loved sports and spent much of his youth in the pool and on the soccer field. He graduated from Chico State and went on to complete the California Highway Patrol Academy; but California State Parks is where he found his career. Blake graduated from the State Park Ranger Academy and built his esteemed career at the Oceano Dunes District. He was an amazing person who dedicated himself to both the department and public for many years. He served as a Field Training Officer for so many, and through his sarcastic wit and positive attitude was an invaluable asset to his partners and trainees. Blake and wife Ammie met in 2000 and moved to the Central Coast in 2006. They had their spunky and inquisitive son Cash in 2008.



### PETE ORZALLI, 1940 - 2016

Pete passed away in late December at age 76. Born and raised in Nevada City, he served in the Navy on board the aircraft carrier USS Lexington. He joined State Parks upon his return, working as a Heavy Equipment Operator in District 6. He became District Maintenance Chief at Bothe-Napa in 1980 and stayed until his retirement in 2002, living in Calistoga after retiring. Pete was married to his wife Kay for 52 years, before her passing in July, 2016. Pete loved to deep sea fish, skydive, garden, and cheer on the San Francisco 49ers.



### RON McCALL 1935 – 2016

Ronald J. McCall grew up in Southern California and attended Pasadena Community College where he played trombone in the college marching band that always led the Rose Parade on New Year's morning. Ron graduated from Humboldt State College in 1960 with a degree in Fisheries Biology. During his time at Humboldt, he met and married his wife Judy.

Ron worked with the US Fish & Wildlife Service before landing a job as a park ranger with California State Parks in 1962. His first assignment was at Millerton Lake. From Millerton, Ron and Judy moved to Carpinteria State Beach, back to Millerton and then to Big Sur. By now, two children were part of the McCall family – daughter Diana and son Jeff.

By the early 1970's Ron's rising star took him to the Pajaro Coast Area as Chief Ranger. He was noticed by the District staff in Monterey and was soon appointed as Safety & Enforcement Specialist for District 4. In 1974, Ron was appointed Training Center director where he managed law enforcement training for new rangers as well as the management and supervision programs. Two years later, Ron was appointed Area Manager for the Channel Coast Area in Ventura. By the end of the decade, the McCalls moved again as Ron took over as Area Manager for the San Luis Obispo Coast Area. A final stop in Ron's career brought him back to Monterey as Deputy Regional Director for the new Central Coast Region. Ron retired from State Parks in 1991. He served as President of CSPRA from 1976-78. Shortly after retirement, Ron and Judy moved to Camino, CA near Placerville. It wasn't long before Ron was a volunteer at Marshall Gold Discovery SHP and continued his park service as a retired annuitant conducting background investigations for potential new hires.

Ron thoroughly enjoyed the time he spent with his family fishing and camping. He will be remembered by an entire generation of park workers for his gentle, positive demeanor; his support for staff; his professional approach to work; his enjoyment of a good after-work party; his love of model trains; and his passion for the outdoors.





## Mixed Metaphors and Malaprops



by **Jeff Price**, seriously retired

Mixed Metaphor: A combination of thoughts that when strung together produce a ridiculously funny effect of melded clichés. Send along any overheard slips of the tongue to [malaprops@cspra.com](mailto:malaprops@cspra.com).

**Ooops, wrong room . . .**

*He went right into the lion's den and slayed that dragon.*

**I didn't know Gerardus Mercator lived in Illinois.**

*I'm trying not to be a huge pain, but is it possible to get an image of a Decatur projection map?*

**Semi-circular canals?**

*Gov. Christie certainly seemed to have Trump's inner ear on that "jail Hillary" mantra during the election.*

**Egg shells maybe?**

*Why suddenly are you so brave, when a minute ago you were walking on cake?*

**More than 2?**

*Your local Ford dealer's winter sale is burning the candle at all ends!*

**It's all about location and timing.**

*There's only so many places you can tap the well.*

**Olive branch?**

*We expected the Secretary of State to at least offer Palestine a fig leaf of peace.*

**Repeated acquisition?**

*I made an error, but I get at least one take over, right?*

## CSPRAnet

*Member List Server*

*The list server is up and running and needs  
YOUR PARTICIPATION to be a success!*

*Please send your email address (no State emails please)  
to Jeff Price at <[webmaster@cspra.com](mailto:webmaster@cspra.com)>  
with the subject line "add me to CSPRAnet"*

## Are You Retiring?

by **Jeff Price**, Membership Secretary

CSPRA members are eligible to receive a commemorative plaque acknowledging their years of state service and membership at retirement. If you or a co-worker will be retiring soon, please contact Membership Services coordinator, **Betsy Anderson** with the date of plaque presentation, where and to whom the plaque should be shipped, along with the member's full name and years of state service at [betsy@cspra.com](mailto:betsy@cspra.com). She can help retirees coordinate switching between the State Controller and CalPERS after retirement.



**Bill Lindemann & Scott Elliott**

**Find us on Facebook**

[www.facebook.com/CSPRA](http://www.facebook.com/CSPRA)



**Attention retired members!**

Want to keep in touch after you leave DPR? Join GrayBears email ListServ. FREE and EASY  
[graybears@cspra.com](mailto:graybears@cspra.com)

## GET CONNECTED CSPRA Online

Catch up on CSPRA activities Contact  
Board or Officers  
catch the *WAVE*  
[www.cspra.com](http://www.cspra.com)

## Are you traveling soon?

Want to find out what's going on in the State Parks around you? Visit the events page on the California State Parks website to find out what's happening in parks around the state:  
[www.parks.ca.gov/events](http://www.parks.ca.gov/events)



California State Park Rangers Association  
P.O. Box 3212  
Bowman, CA 95604-3212  
[www.cspra.com](http://www.cspra.com)

## RETURN SERVICE REQUESTED



*PLEASE, LET US KNOW*  
email [betsy@cspra.com](mailto:betsy@cspra.com)



CSPRA is affiliated with the Park Rangers Association of California (PRAC), the International Rangers Federation (IRF) and the Federation of Western Outdoor Clubs (FWOC).

## CALIFORNIA STATE PARK RANGERS ASSOCIATION

**Mission Statement:** The California State Park Rangers Association is an organization of park professionals dedicated to advancement of the highest principles of public service, and established to support, protect, and defend the integrity of State Parks for present and future generations.

*Founded 1964*