



The CSPRA Wave

Volume 23, Number 4

Newsletter of the CALIFORNIA STATE PARK RANGERS ASSOCIATION

Autumn 2023

"State Park experts and professionals advocating for State Parks since 1964."

Upcoming Election

Nominations are now open for two CSPRA Officers - Vice President and Treasurer - and three Director positions. Each two-year term starts January 2024.

If you are interested in a position as a CSPRA Officer or Director, please let the Nominating Committee know by emailing Board Secretary **Joanne Kerbavaz** at joanne@cspira.com. Nominations close on November 11, 2023.

CSPRA members should receive an electronic ballot on November 25. If you do not receive an e-mailed ballot by November 27, please contact **Jeff Price** at jeff@cspira.com. Voting will end on December 10, 2023.

Please consider this opportunity to become more involved in CSPRA. This is a chance to make a difference in the future of California parks and your chosen profession.

Rozzelle Joins CSPRA Board

By Rich Rozzelle

Thank you for the privilege to serve on the CSPRA Board of Directors. My career with CA State Parks began in 1981 and ended in 2016. I was fortunate to work in the wonderful parks in Orange Coast, Angeles and Channel Coast Districts.

My classifications included Lifeguard (seasonal), SPPO (Lifeguard), Associate Land Agent, Associate Park and Recreation Specialist, District Superintendent and Southern Division Chief. I continue to be a regular user of the State Parks and I hope my participation on the CSPRA Board will benefit the CSPRA members and further CSPRA's mission.



Tom Bernardo presents a CSPRA retirement plaque to Mark Hada. Mark completed a 23-year career with State Parks, having worked at Capitol District, LEES Division, and the OHMVR Division after a U.S. Army career. Mark previously served as VP in CSPRA and resides in the town of Rescue.





CSPRA LEADERSHIP

PRESIDENT

Dave Carle, Retired Ranger
(760) 709-1181 dave@cspra.com

VICE PRESIDENT

Ann Meneguzzi, Retired, Sup. Rgr.
(209) 373-9844, ann@cspra.com

SECRETARY

Joanne Kerbavaz, Environmental
Scientist, (650) 720-5007
joanne@cspra.com

TREASURER

Ron Krueper, Retired Ranger/Supt.
(909) 838-8249, ron@cspra.com

DIRECTORS

Sal Goshorn, Ret Lifeguard
(626) 644-4616, sal@cspra.com

Jean Rhyne, Interpreter,
(661) 753-6233, jean@cspra.com

Cindy Begbie, Maint. Chief, Ret.
(559) 908-6702, cindy@cspra.com

Steve Ptomey, Interpreter,
559.972.5844, steve@cspra.com

Jonathan Irwin, Ranger SPPO,
(619) 575-3613x337, jon@cspra.com

Rich Rozzelle, Superintendent, Ret.
(949) 303-5822, rich@cspra.com

Rob Pickett, Supervising Ranger
(661) 618-6924, rob@cspra.com

PAST PRESIDENT

Mike Lynch, Retired Ranger/Supt.
mike@cspra.com

MEMBER SERVICES

Betsy Anderson
(707) 884-3949, betsy@cspra.com

INTERNET COMMUNICATIONS

Jeffery B. Price, Webmaster
jeff@cspra.com
www.cspra.com

The CSPRA Wave

ISSN 0087-9176
Brian Cahill, Editor
Brian@cspra.com

Published by CSPRA, PO Box 1667 Big
Bear Lake CA 92315

**Deadline for next issue
December 15**

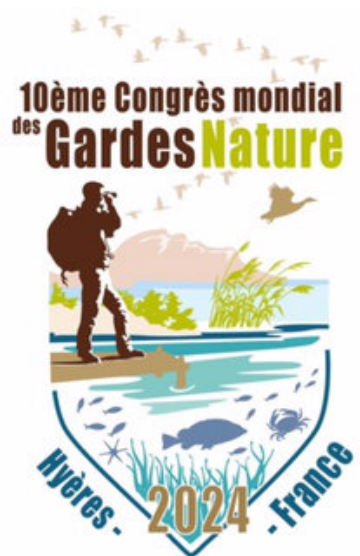
10th IRF World Ranger Congress

Gardes Nature de France
(French Ranger Association)
and the International Ranger
Federation (IRF) are working
closely together in
organizing the 10th IRF
WRC.

The dates are confirmed
and the congress will be
held from 7-11 October,
2024 in Giens Peninsula,
Hyeres, France.

The theme will focus on
'Empowering Rangers
Globally to meet the 30 x 30
Challenge' with twin pleas
for greater conservation,
regeneration and restoration
of the world's biodiversity,
and to alert all current and
potential stakeholders to
the urgent need to involve,
employ, enable and fully
support many more Rangers
in the defense of the world's
biodiversity.

The IRF World Ranger
Congress brings together
Rangers from all over the
world, giving them the
opportunity to learn new
skills, share knowledge and
create partnerships. It
occurs every three years in a
different location, allowing
host countries from each IRF
region to raise the profile of
Rangers locally and
internationally. It allows
them to showcase their
successes, to identify how
they're addressing their
regional challenges and
share their knowledge and
skills with colleagues from
around the world.



Attending a congress like
this is a once in a life time
opportunity for many
Rangers; meeting colleagues
from around the world gives
Rangers hope and boosts
their morale. Often their
jobs are located in remote
and isolated areas where
they don't have a lot of
contact with the world
family of Rangers. They
don't often have the
opportunity to exchange
stories and learn from
others that may be located
half way across the world.

The World Ranger Congress
is also a forum for the
creation of
recommendations on issues
that affect Rangers and the
work that they do on the
front-line. Having these
challenges come directly
from Rangers makes the
message more powerful; the
recommendations are
presented at conservation
forums globally.

President's Message

Not A Job, But A Calling

With our Annual State Parks Rendezvous coming in November this year, it is not too early to consider location planning for 2024. So I studied the long list of Membership Meeting



Locations on our website (<http://www.cspra.com/meetings.html>) since 1964 and, amazingly, we have never met any farther north within the state than Truckee/Donner (last year's Rendezvous).

The farthest north we have ever gathered was outside the state, in Reno, Nevada in 1983. Sacramento has hosted our Member Meetings six times, in 1964, '70, '76, '82, '88, and 2001. South Lake Tahoe in 2003, and 2008. Closer to the coast, where so many State Parks are, we've gone to Santa Rosa three times (1967, '78, and '95), and Rohnert Park, a bit south of there, in 2000.

I think it is long past time to hold a State Parks Rendezvous somewhere on the coast of beautiful northwestern California. Superintendent Victor Bjelajac has offered to help us plan and organize programs and logistics. Would you make the effort to travel there to a region with great State Parks and a long park history?

Meanwhile, please register for this year's Lake Perris gathering soon, to help us plan for meals and group tours. I am excited to be going to Mt. San Jacinto this year, among other activities,

and appreciate all the details being organized by **Ron Krueper**.

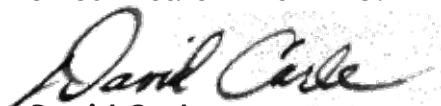
One special moment during our Annual Meeting (November 8th) will be to honor **Jim Davis**, the oldest surviving California State Park Ranger. Jim turns 100 in January and lives on Maui (his living situation was not affected by the recent fires). We plan to hook-up with Jim via Zoom or Facetime, put him on a screen in our audience room and let him hear from us, live. In a video Jim made for CSPRA a couple years ago he described the parks career as "not a job, but a calling." Yes! Thank you, Jim, a Charter member of CSPRA, for that reminder.

As of this date (September 15), we are still waiting on the environmental analysis for theater performances at Jack London SHP, as required by the court decision last year. And we are watching for an EIR to come out in October, regarding the plan to run a gondola and build an

associated station at one end of Los Angeles SHP. This summer we took a position opposing SB688, which did pass the Legislative houses and was signed recently by the Governor. This extends the authorization for the Department to establish agreements for non-profit groups to continue operating up to 20 State Park units.

We have not seen movement on CSPRA's efforts to identify long-term stable funding to address economic ups-and-downs that make it hard for the Department to fill vacant positions and address a massive infrastructure/maintenance backlog. We are waiting for communication from Director Quintero on those thorny funding issues.

Please see the election nominations notice for three CSPRA Directors and the Vice-President and Treasurer positions. And please welcome a new Director to our CSPRA Board, **Rich Rozzelle**. Rich serves by appointment through the end of this year and will run in the Fall election for the next 2-year term. Look for his introduction statement in this issue. We want to thank **Sue Neary** for serving on our Board in 2022/23.


David Carle,
CSPRA President

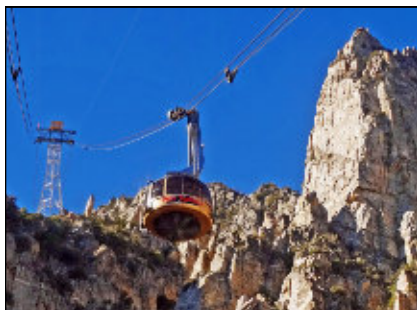
2023 CSPRA Annual Conference and Rendezvous Lake Perris State Recreation Area

Ron Krueper

You won't want to miss this year's conference November 6-9, 2023 at Lake Perris SRA. We have a full "slate" of diverse topics and presentations that will be of interest to everyone. Please register soon.

Monday November 6th we will tour nearby California Citrus State Historic Park in the morning following by an afternoon tour of the Ya'i Heki' Indian Museum at Lake Perris. And for those more adventurous we will take a 9 mile evening bike ride completely around Lake Perris.

Tuesday November 7th we will have an all day excursion via the Palm Springs Tram to Mt. San Jacinto State Park. We will review the Long Valley Trail Management Plan and trail realignments and visit Hidden Lake where a success story occurred with the delisting of the endangered Hidden Lake Blue Curl while allowing recreation access.



Wednesday November 8th will feature the formal Conference at the Lakeside Pavilion located on Moreno Beach in Lake Perris SRA. Topics include:

- Round Valley Meadow Restoration project - Mt. San Jacinto SP
- Delisting of the Hidden Lake Blue Curl – Mt. San Jacinto SP
- Review of law enforcement and recreation issues in the Santa Rosa and San Jacinto National Monuments – **Tom Friend** BLM Law Enforcement Ranger
- Latino Outdoors Programs and review-retired District Superintendent **Rich Rojas**.

- **Jay Chamberlin**, California State Parks Chief of Natural Resources, lunch keynote speaker

- Annual CSPRA General Membership Meeting.

Conference registration (just \$45) includes all entrance fees to the various field trips, tram ride and lunch, dinner on November 8th. Camping for a \$35 per night fee is available at Lake Perris and the nearby Ayers Hotel has rooms at a group rate of \$95 per night (includes breakfast). See the CSPRA website for registration details. See you at the Conference!

Note Deadline will be Nov 1, 2023 to register. However, the hotel rooms go off block sale Oct 5th. Camping deadline is also November 1.

State Parks Rendezvous Registration

CSPRA Members and State Park Retirees
Lake Perris SRA ~ November 6-9, 2023



Name: _____

Additional Guest/Spouse Name: _____

Address: _____ City: _____ State: _____ Zip: _____

Mobile Phone: _____ Home or Work Phone: _____

E-mail Address: _____

Payment Options: Pay by check/mail or by credit card/online.

\$45 per person: Includes hospitality, tram tour, citrus tasting, museum tour, guided hike, 10-mile lake bike tour, luncheon, and dinner/awards event.

\$25 per person: Lunch & Dinner meals only on Wednesday Nov 8th.

Number of **full registrations** _____ x \$45 each = \$ _____

Number of lunch & dinner **meals only** registrations _____ x \$25 each = \$ _____
(lunch & dinner included in full registration)

Total = \$ _____

1. _____ **Payment by Mail with check** payable to CSPRA
Complete this form, print, and mail with your check to:
Ron Krueper, Treasurer, PO Box 1667, Big Bear Lake CA 92315

OR

2. _____ **Payment by Credit Card** online
Complete payment on CSPRA website <http://www.cspra.com/reg2023.html>
Then save this form and e-mail it to ron@cspra.com

More event details and latest schedule available online at
<http://www.cspra.com/rendezvous.html>

Conference Lodging:

HOTEL: Ayers Hotel & Spa, 12631 Memorial Way, Moreno Valley CA 92553

Special Room Rate \$95 for King or Queen suite, includes breakfast, from Nov 5 to Nov 10.

You must call hotel for reservation rate at (951) 571-4141, Ext "0" and say you are with *CSPRA Group Block*.

Room cancelation 100% up to 24 hours prior to arrival day.

DEADLINE for special room rate reservations is **October 5, 2023**.

CAMPING: Camping with hookups available at Lake Perris, Luiseno Campground.

Contact Ron Krueper at ron@cspra.com for details and arrival confirmation.

Mott Training Center Turns Fifty

This is the 50th anniversary of the opening of the Department's Center for Continuous Learning on the Asilomar Conference Grounds. It opened in September 1973 and shortly afterwards, it was officially dedicated to the former Director as the William Penn Mott Jr., Training Center.



It was built on these foundational ideas:

(1) build the Center in a state park on a cost-effective basis

(2) design it around an environment conducive to classroom and after-hours learning

(3) conduct training from entry-level through managerial

(4) emphasize training for trainers

(5) reap the benefit of using

Training and Development assignments for Program Coordinators

(6) base the training firmly on operational needs and,

(7) underscore the fact that strong and long-term organizational support of employee development is essential. Training is a major investment that, if done right, pays off.

Original courses for State Park Ranger Trainees (Groups J/K) and Park

Managers were soon joined by extensive programs for Maintenance, POST-certified Law Enforcement, Interpretation, Administration, and Resource Management. In the course of the last 50 years few state agencies have been responsible for such diverse and comprehensive training.

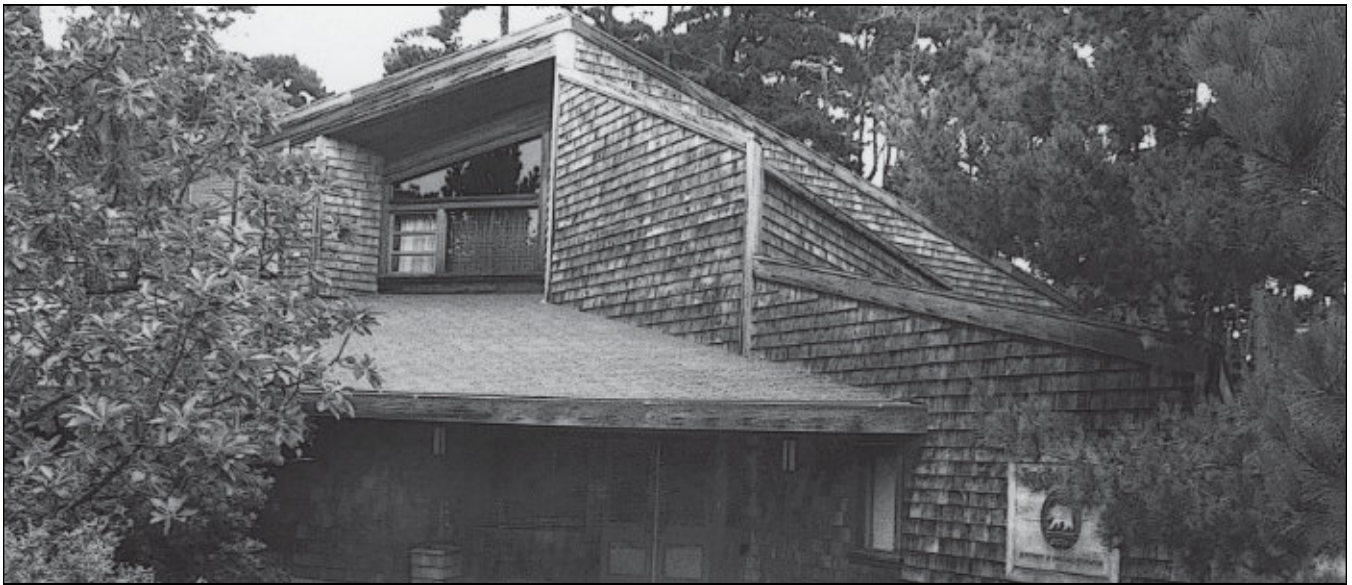
Nearly every Park professionals' life was in some manner touched by experience at the Center. If you attended a course, acted as an instructor, or served on the staff, reflect on those days.

While you're at it, take a moment to celebrate the memory of **Bill Mott, Jack Knight, Jim Whitehead, Jim Kruger**, and the others who had the foresight and ingenuity to create the Training Center and its vision of a learning organization.

The William Penn Mott Jr., Training Center now offers a variety of training programs on a regular basis to both California State Parks' employees and those from



Bill Berry and Broc Stenman honor longtime course leader Joe Mette



other agencies. Located on the scenic Monterey Peninsula in Pacific Grove, the Mott Training Center consists of modern classrooms, audio-visual rooms, a conference room, a library, and offices. Surrounded by the picturesque Monterey pine forest next to Asilomar State Beach, the facilities provide an ideal learning environment. Three lodges, each with living room and fireplace, accommodate 30 persons in single rooms.

California State Parks is proud of its reputation for training excellence, and is looked on as a leader in this field. Training programs combine a variety of instructional methods designed to accomplish individual learning. Small group assignments, field projects, demonstrations, and other "active learning" means are used to involve learners in meeting individual training needs.



Chuck Combs, longtime Maintenance Training Coordinator, Receives Director's Commendation



Board Meeting & World Ranger Day

Your Board of Directors came together in July for a board meeting and to participate in World Ranger Day at Point Reyes. We stayed at the rustic Alpine Lodge on Mount Tamalpais with picturesque views down to the Pacific Ocean & up to Mt Tam's high peak.

We shared good discussions on the beautiful deck surrounded by redwoods, with tasty meals on the dining porch. Some of the gang enjoyed a hike up to the West Point Inn and others swapped patches and stories. Thanks to Ann Meneguzzi for all the logistics.



I STAND WITH THE
WORLD'S RANGERS
WORLD RANGER DAY
31 JULY





Photos by Janet Carle, Mike Lynch and Brian Cahill



Lake Natoma Planning Process

By *Dan Winkelman*
SPR retired

Located behind Nimbus Dam, Lake Natoma is a reservoir that is a part of Folsom Lake State Recreation Area. The land in and around the lake is owned by the Bureau of Reclamation, and Ca State Parks. Since the lake is also a part of the American River Parkway, there are two plans in place for designated use and development. The overlapping land sections of both plans are in agreement.

The lake is also within the boundaries of the City of Folsom. There is an organization in Folsom called the Greater Folsom Partnership (GFP) consisting of the Folsom Chamber of Commerce, Folsom Economic Development Corp (an organization of developers), and the Folsom Tourism Bureau. All five members of the Folsom City Council are supported by the GFP. The city has created a River District around Lake Natoma and what follows is an excerpt of the city address by Folsom Mayor Rosario Rodrigues delivered January 26, 2023:

“The city’s general plan calls for the preparation of a River District Master Plan, with the goal of activating our expansive waterfront for improved access, recreation, and economic development. Through strategic partnerships and community involvement, we will image the future of our



waterfront in the heart of Folsom, and the heart of nature, together.”

So far, one organization has taken action to protect Lake Natoma from this River District, Save the American River Association. (SARARIVERWATCH.com). SARA was organized in 1961 for the purpose of creation of the American River Parkway that extends from the confluence of the Sacramento and American Rivers at Discovery Park to Beals Point on Folsom Lake.

SARA brought suit to stop an asphalt and concrete trail in a designated conservation area of Lake Natoma by the city. Unfortunately SARA lost in court, but continues to monitor and organize a legal team to preserve the treasured natural quality of a lake in the heart of a city that proclaims itself as being “Distinctive by Nature.”

I will follow this planning process closely and keep CSPRA advised of River District activity.

Wave Goodbye

Larry Helm



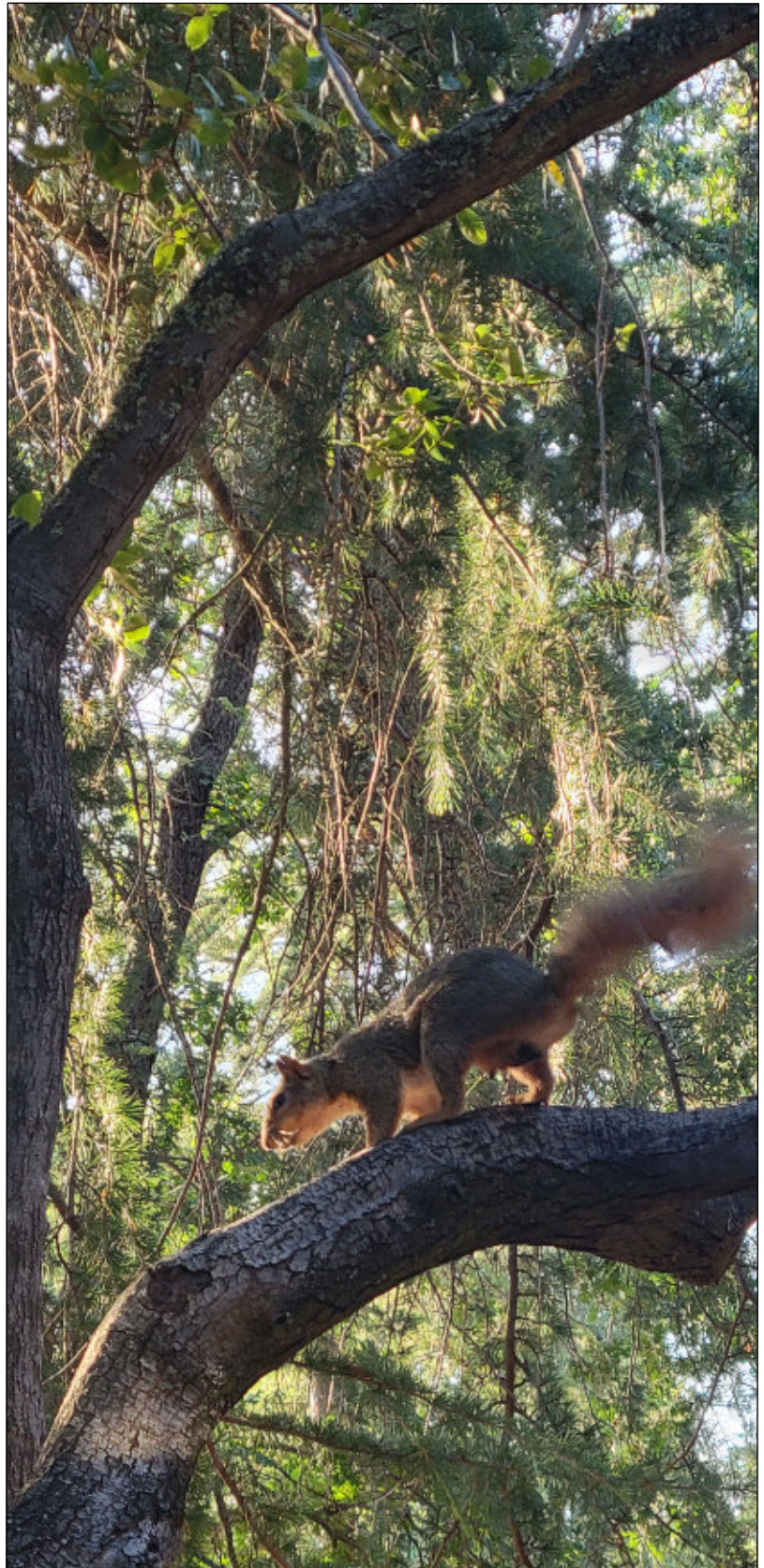
Larry left us unexpectedly this June in his 77th year.

Larry was born to Ken and Ann Helm on March 23, 1946. He graduated

from Del Oro High before continuing on to college at Humboldt University where he earned a degree in Oceanography. A lover of the outdoors, Larry launched a career as a California State Park Ranger. He enjoyed living in California until, having been promoted for his dedication, retired as the Superintendent of California Off Road Vehicle State Parks.

In his retirement, Larry lived his dream of running a farm. He raised unique Long Haired Highland cattle, baled his own hay, grew fruit trees, and harvested vegetables from his own garden. Larry was energetic and driven. Larry was adventurous. He biked, hiked, sailed, took flying lessons, and enjoyed golf. He was an avid reader of Westerns and played a mean game of horseshoes. Larry made a difference in the world. He will be sorely missed and forever remembered.

Larry Helm, beloved husband of Sharon Helm. Much loved father of Kellie Manning, Carisa Helm, Marcy Helm, and Ben Quinn. Proud grandfather of Alex, Ross, Bennett, and Connor. Honored great grandfather of Jameson and Jesse. Dear brother of Kay, Gloria, Joyce, Don, and Mark.



Successful Fundraising and Continuing Work at Ikh Nart Nature Reserve in Mongolia

By Lynn Rhodes

I returned from the working trip to the Ikh Nart Nature Reserve, Sister Park of Anza-Borrego Desert State Park, in July after incredible, successful fund-raising efforts to ensure the solar power, inverter equipment was purchased and available for the researchers working on the current cultural resource protection project there. The Ranger Foundation and CSPRA led and supported the charge to launch the fundraising campaign which allowed for long-distance purchasing, remote transport and installation of the equipment which was installed in and on the small laboratory ger (Mongolian tent) where artifacts could be recorded, logged, photographed and stored for study and transport to authorized locations. A second private GoFundMe campaign was also successful to raise funds for



salary-support for the only Mongolian Ranger, **Choi**. **Choi** works with the project team on the current archaeology project and provides protection patrol for cultural sites throughout the year.

The current cultural protection, archaeology project is called Burgasney Enger (Ikh-28) which is dated to 8,000 years ago. It corresponds to a time when there were lakes and marshlands in the valleys of the Gobi and represents a small seasonal settlement with at least two hut circles and a number of carefully constructed ovens. The project is very unique and will continue seasonally, led by **Dr. Arlene Rosen** Professor of Anthropology at University of Texas, with **Dr. Jennifer Farquhar**, **Dr. Joan Schneider** (ABDSP

Archaeologist ret.), **Susan Gilliland**, (ABDSP Archaeology Volunteer) and joined by other specialists and subject-matter experts.

During this trip, I worked with the Mongolian Park Rangers, scientists, and local officials to further enhance the partnership with Anza-Borrego Desert State Park. Director of Ikh Nart Nature Reserve **Anandpurev Tumurbaatar**, former Director of Ikh Nart NR, **Amga Sukh Amgalanbaatar**, the Ikh Nart Rangers including **Choibalsan Tumendemberel (Choi)**. They came to our camp (Ikh Nart Rocks Ger Camp) to not only see the archaeology project, but also to work together on the new management plan for the Nature Reserve which soon will hopefully be approved by the Mongolian



Ministry. The rangers cooked a special, honorary feast for everyone at camp, and we traveled throughout the reserve to see their recent work on visitor supporting facilities and plans.

The importance of Ikh Nart Nature Reserve extends beyond its borders. It is home to one of the last remaining populations of Argali Sheep, which are considered a near-threatened species by the International Union for Conservation of Nature (IUCN). The reserve also protects cultural resources such as historic ruins,



artifacts, burial sites, and petroglyphs. An amazing variety of archaeological sites that stretch back thousands of years are scattered throughout the reserve, with hundreds of sites from the Stone Age, Bronze Age, Ghengis Khan Era, the repression of religion during the Stalinist Era, and more.

Continuing joint efforts between Ikh Nart Nature Reserve and Anza-Borrego Desert State Park include wildlife studies, natural and cultural resource protection, park management, enforcement, training and ecotourism. The recent successful fundraising effort that many individuals contributed to, enabling the purchase of necessary solar power& inverter equipment is crucial for supporting remote ongoing research occurring at Ikh Nart Nature Reserve. Many thanks again to everyone who donated!

Mixed Metaphors & Malaprops

by Jeff Price,
seriously retired

Malaprop : derived from French “mal a propos” which means “something out of place.” A mixed metaphor is a combination of two or more incompatible metaphors, which produces a ridiculous effect. Remember this: Keep an eye on your metaphors and an ear to the ground so that you don't end up with your foot in your mouth.



Silence of the scams.

Statements from that account were mute points but she just kept going.

Some of these I can't figure out.

They took their last time out on 4th down to make sure all their eggs are in the same basket.

Amphibious airboat script maybe.

She's flying solo when we all should be rowing together on the same page.

Amtrak diversion.

Those guys would take a bullet train for the President.

Colorful homecoming.

I'm sure, and checked and rechecked until the cows turned blue.

May the bite force chew with you.

She can't even chew chewing gum and walk in a straight line at the same time, let alone write a book!

Avian stationery.

First we have to get all our ducks on the same page.

Grainy mega-vision.

Look, you have to see this conspiracy verdict with a block of salt.

CSPRA is affiliated with several other non-profit organizations that share our goals.

The Park Rangers Association of California is a professional organization for park Rangers and other employees of municipal, county, special district, state and federal agencies.



The International Ranger Federation supporting the critical work that the world's park rangers do in conserving our natural and cultural heritage.



Federation of Western Outdoor Clubs Promotion of the Proper Use, Enjoyment and Protection of America's Scenic Wilderness and Outdoor Resources.



Association of National Park Rangers communicating for, about and with National Park Service employees of all disciplines and providing a forum for professional enrichment



California Park Hospitality Association representing companies and individuals who provide hospitality services under contract with the California State Parks.



California League of Park Associations supporting the Non-profits that are partners with State Parks.



Ranger Foundation — Rangers Helping Rangers. Our 501(c)3 charitable organization helps rangers worldwide. Eighty-Four Wildfire Relief grants have been granted to members of our state park family. More information about how you can help [HERE](#).





www.CSPRA.com



twitter.com/@_CSPRA_



facebook.com/CSPRA

Are you Moving?
Please let us know.
Betsy@CSPRA.com



Member List Server

Sign-up for timely CSPRA news right in your inbox.

Just send your email address (no State emails please) to webmaster@cspira.com with the subject line "add me to CSPRAnet"



Retiring Soon?

If you or a co-worker will be retiring soon, please contact Membership Services Coordinator Betsy Anderson at (707) 884-3949.
betsy@cspira.com.



Already Retired?

Want to keep in touch after you leave DPR? Join Gray-Bears email ListServ - FREE and EASY

graybears@cspira.com

Join CSPRA Or join us online at cspira.com

Name: _____

Address: _____

City _____ State _____ Zip _____

Job Classification: _____

District / Park: _____

Social Security # _____ (req'd for pay deduction)

Phone(W) _____ Phone (H) _____

Email: _____

Membership Type (Check one)

- ☐ Active \$10/month
- ☐ Active Retired \$60/year (\$5/mo.)
- ☐ Supporting \$36/year*
- ☐ Organization \$50/year*
- ☐ Benefactor \$1,000/life*

** Please include check for 1 year's dues for these membership levels.*

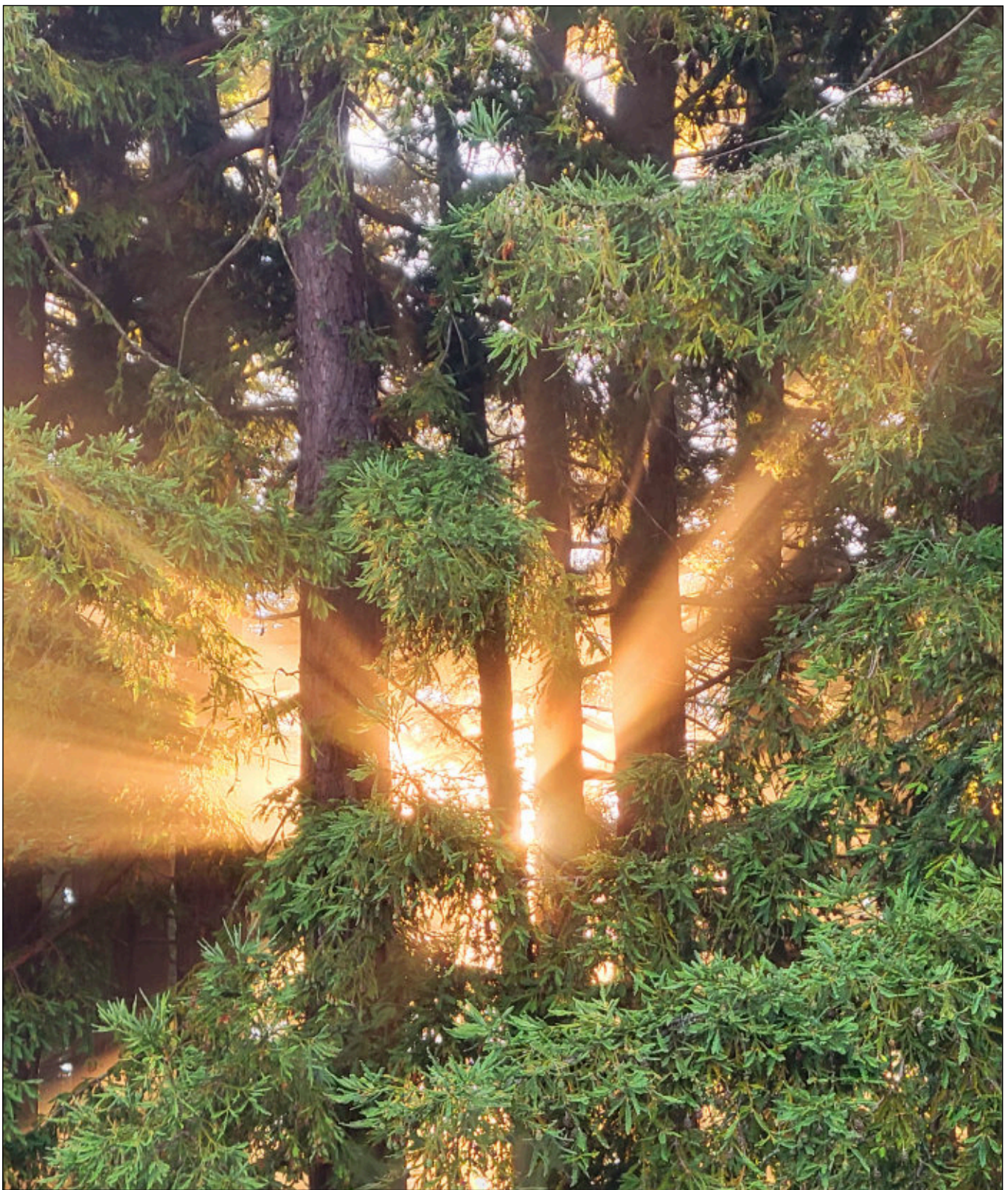
I hereby authorize the State Controller to deduct from my salary and transmit as designated an amount for membership dues in the California State Park Rangers Association. This authorization will remain in effect until canceled by myself or by the organization. I certify I am a member of the above organization and understand that termination of my membership will cancel all deductions made under this organization.

Signature _____

Date _____

Membership by Mail:

CSPRA — Betsy Anderson
PO Box 618 Gualala, CA 95445



The day begins at Alpine Lodge. See page 8. Photo by Brian Cahill

California State Park Rangers Association



CSPRA is an organization of State Park professionals dedicated to advancement of the highest principles of public service, established to support and preserve California State Parks for present and future generations

Founded 1964